



FAQ / Application Note

Subject : How to configure APM mode under Windows XP OS

FAQ Document No: G12002

Date: 2012/6/11

Model Name. FPC-10W04(ECM-945GSE)

Rev. A1

Category: General H/W S/W Others, Setup

Purpose:

This is to configure APM mode so when you turn off the system with Windows XP, it could stop with the message "It is now safe to turn off your computer" before the system shut off.

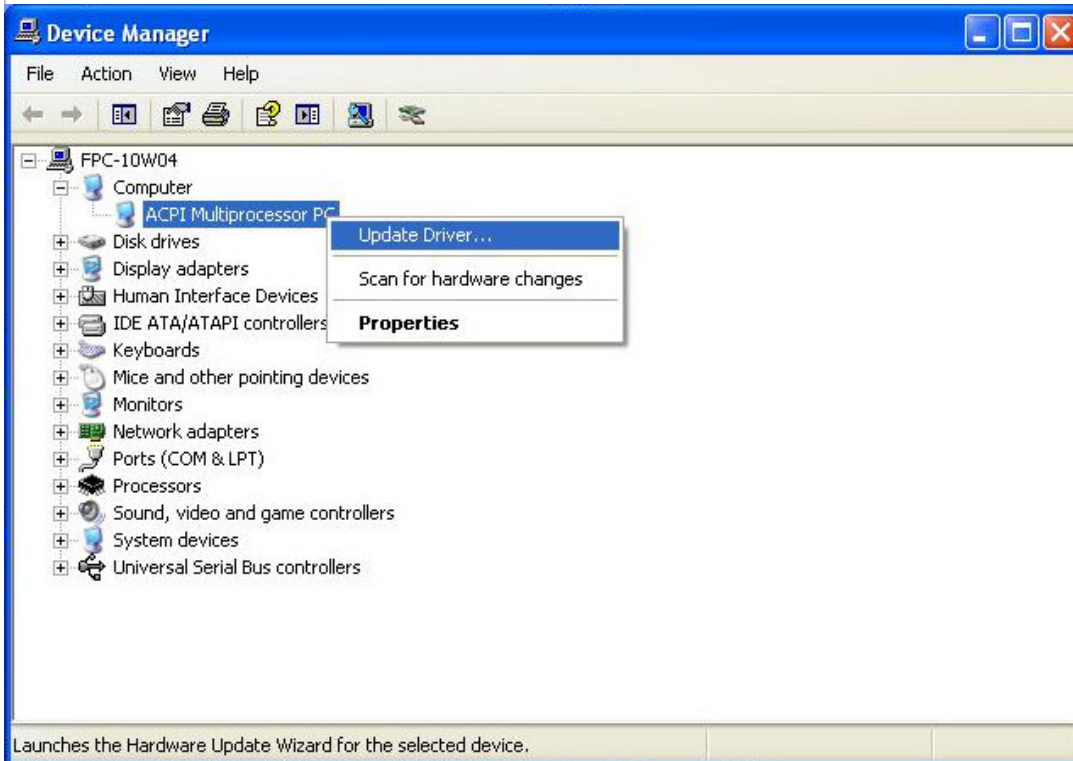
Test Environment and condition :

1. Windows XP SP3 OS
2. FPC-10W04 (ECM-945GSE)

Test Procedure and Results:

Step 1:

Enter into Windows XPpro OS, please click the right button of the mouse in Device Manage and choose ACPI Multiprocessor PC to update driver.



Avalue Technology Inc.

7F, 228, Lian-Cheng Road, Chung Ho City, Taipei, Taiwan R.O.C.

www.avalu.com.tw
sales@avalu.com.tw
Tel:+886-2-82262345
Fax:+886-2-82262777

Avalue Europe
sales.europe@avalu.com.tw
Tel: +45-7025-0310
Fax: +45-4975-5026

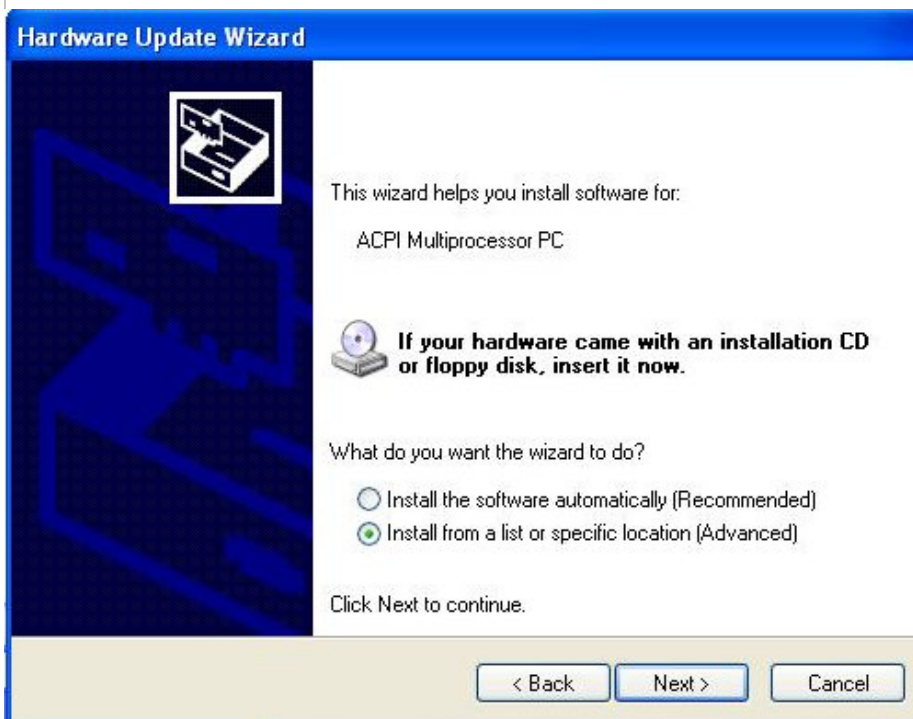
Avalue USA
sales@avalu-usa.com
Tel: +1-732-578-0200
Fax: +1-732-578-0250

BCM Advanced Research
BCMSales@bcmcom.com
Tel: +1-949-470-1888
Fax: +1-949-470-0971

Avalue China
sales.china@avalu.com.cn
Tel: +86-21-5426-3399
Fax: +86-21-6495-0370

Step 2:

And follow the steps below to add a new hardware for “MPS Multiprocessor PC” or “standard PC”.



Avalue Technology Inc.

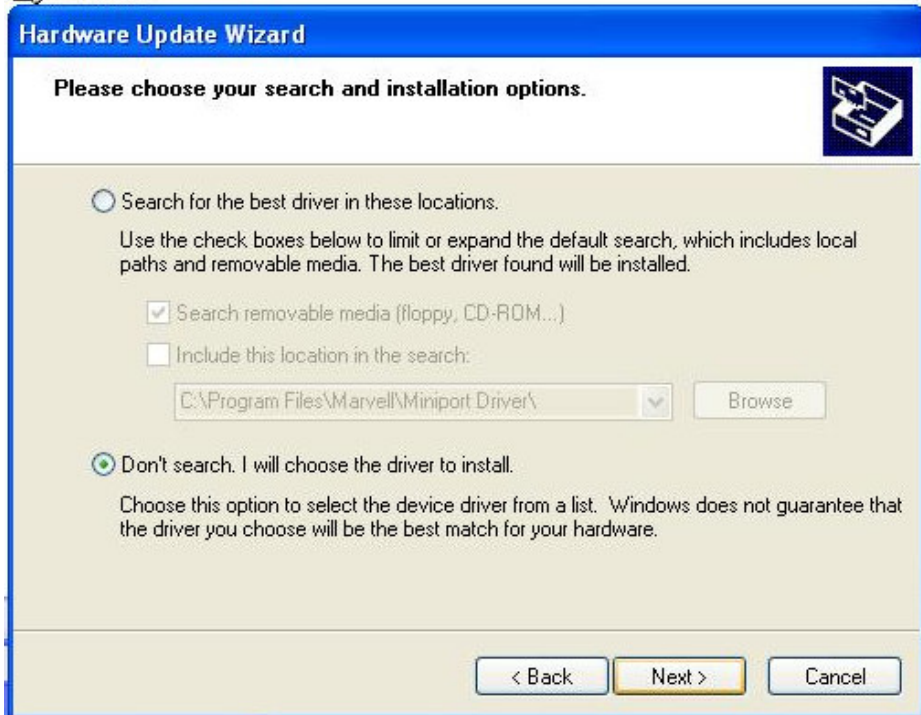
www.avalue.com.tw
 sales@avalue.com.tw
 Tel:+886-2-82262345
 Fax:+886-2-82262777

Avalue Europe
 sales.europe@avalue.com.tw
 Tel: +45-7025-0310
 Fax: +45-4975-5026

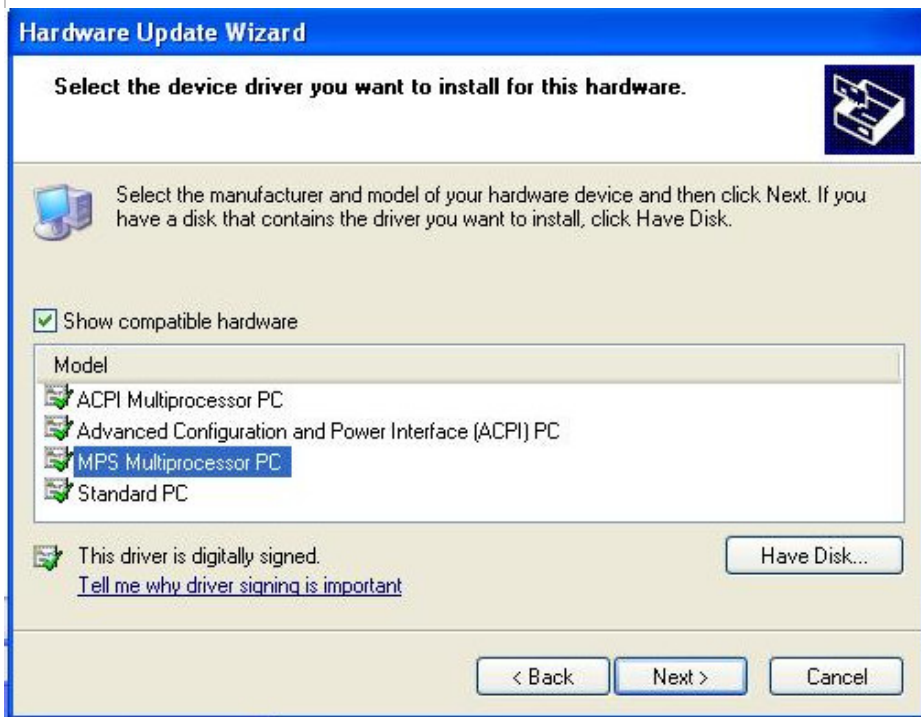
Avalue USA
 sales@avalue-usa.com
 Tel: +1-732-578-0200
 Fax: +1-732-578-0250

7F, 228, Lian-Cheng Road, Chung Ho City, Taipei, Taiwan R.O.C.
 BCM Advanced Research
 BCM5ales@bcmcom.com
 Tel: +1-949-470-1888
 Fax: +1-949-470-0971

Avalue China
 sales.china@avalue.com.cn
 Tel: +86-21-5426-3399
 Fax: +86-21-6495-0370



Choose the “MPS Multiprocessor PC” to install. It should be rebooted after installed.
 (MPS is Multiprocessor PC for APM)



Avalue Technology Inc.

www.avalue.com.tw
 sales@avalue.com.tw
 Tel:+886-2-82262345
 Fax:+886-2-82262777

Avalue Europe
 sales.europe@avalue.com.tw
 Tel: +45-7025-0310
 Fax: +45-4975-5026

Avalue USA
 sales@avalue-usa.com
 Tel: +1-732-578-0200
 Fax: +1-732-578-0250

7F, 228, Lian-Cheng Road, Chung Ho City, Taipei, Taiwan R.O.C.
 BCM Advanced Research
 BCM5ales@bcmcom.com
 Tel: +1-949-470-1888
 Fax: +1-949-470-0971

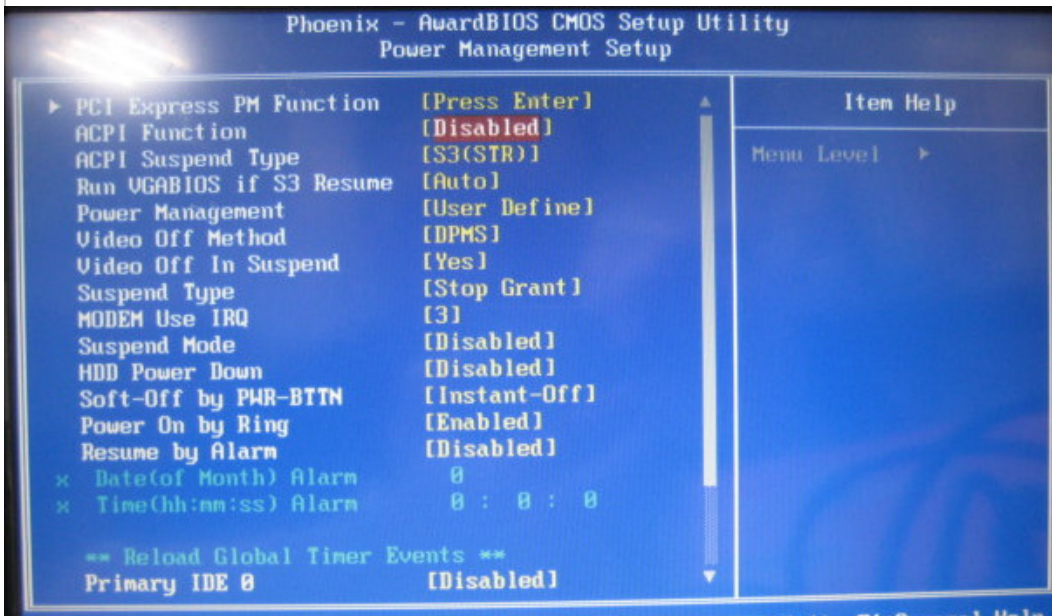
Avalue China
 sales.china@avalue.com.cn
 Tel: +86-21-5426-3399
 Fax: +86-21-6495-0370

Step 3:

Reboot the FPC-10W04 after install the “MPS Multiprocessor PC” driver.

Then, don't enter into Windows XP pro OS.

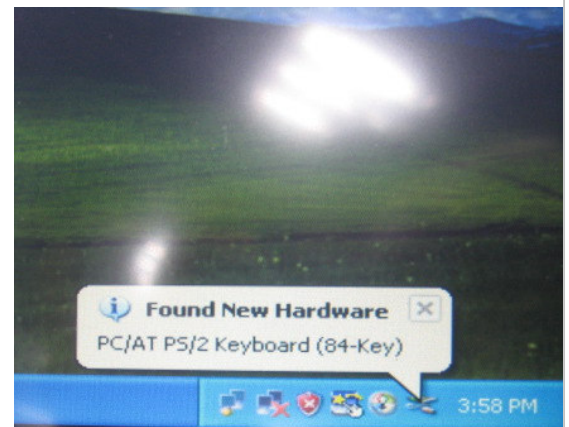
Press Del button to enter into BIOS setting screen and under Power Management Setup we have to set APM mode or Disable ACPI. Then save setting to exit.



Step 4:

Enter into Windows XP, we will see the OS re-recognize peripheral and re-install drivers as below.

Just waiting for the peripheral have been recognized and installed drivers by OS.



Avalue Technology Inc.

www.avalue.com.tw
 sales@avalue.com.tw
 Tel:+886-2-82262345
 Fax:+886-2-82262777

Avalue Europe
 sales.europe@avalue.com.tw
 Tel: +45-7025-0310
 Fax: +45-4975-5026

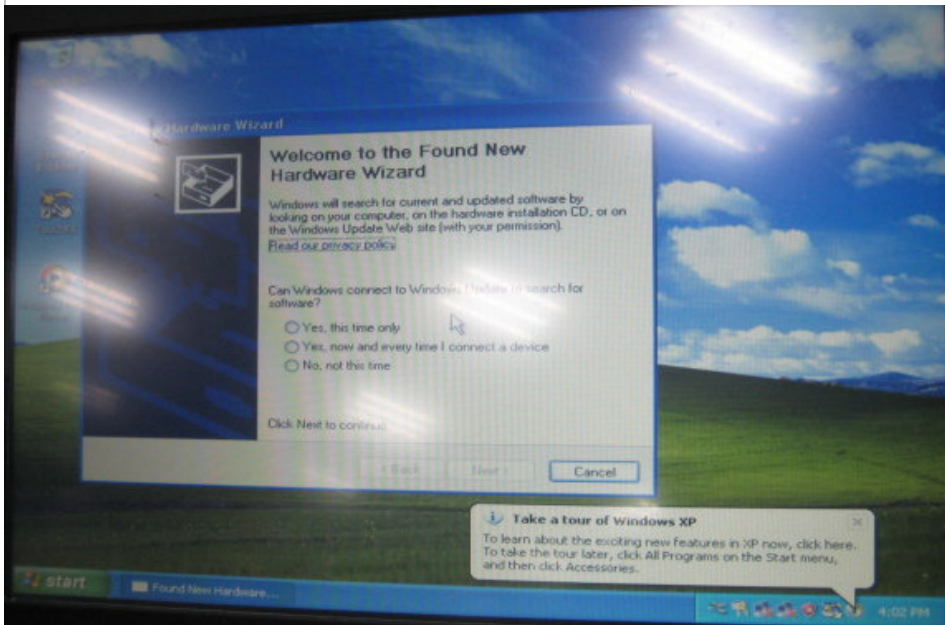
Avalue USA
 sales@avalue-usa.com
 Tel: +1-732-578-0200
 Fax: +1-732-578-0250

7F, 228, Lian-Cheng Road, Chung Ho City, Taipei, Taiwan R.O.C.
 BCM Advanced Research
 BCMSales@bcmcom.com
 Tel: +1-949-470-1888
 Fax: +1-949-470-0971

Avalue China
 sales.china@avalue.com.cn
 Tel: +86-21-5426-3399
 Fax: +86-21-6495-0370

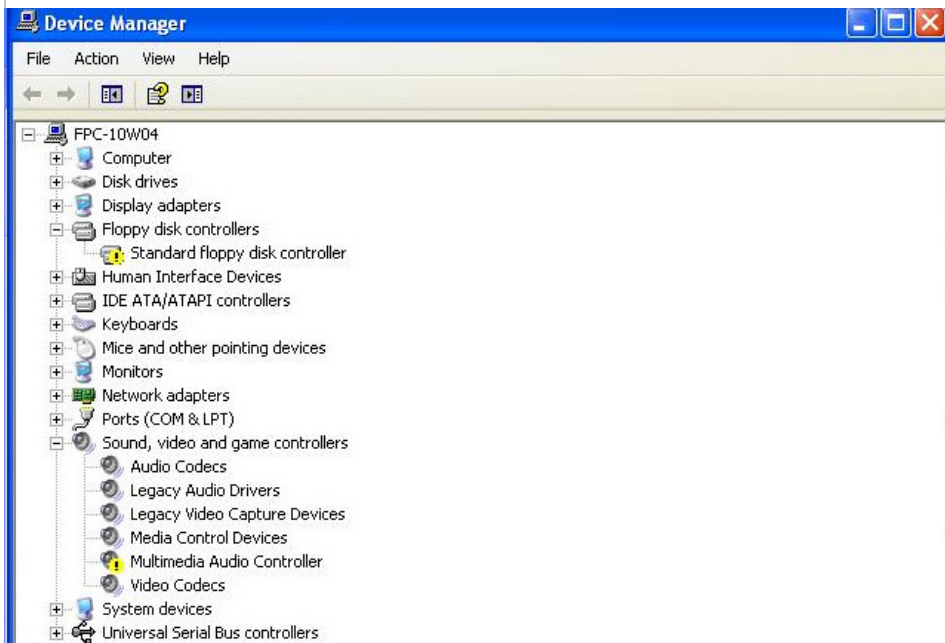
Step 5:

We have to reboot the FPC-10W04 via power switch after the peripheral have been recognized and installed. (In the time, the FPC-10W04 might be uncontrollable via touch panel, mouse even keyboard, so we have to reboot via power switch)



Step 6:

There will be one thing we have to do after reboot the FPC-10W04. To install driver for some devices which is unrecognized by OS.



Avalue Technology Inc.

7F, 228, Lian-Cheng Road, Chung Ho City, Taipei, Taiwan R.O.C.

www.avalue.com.tw
 sales@avalue.com.tw
 Tel:+886-2-82262345
 Fax:+886-2-82262777

Avalue Europe
 sales.europe@avalue.com.tw
 Tel: +45-7025-0310
 Fax: +45-4975-5026

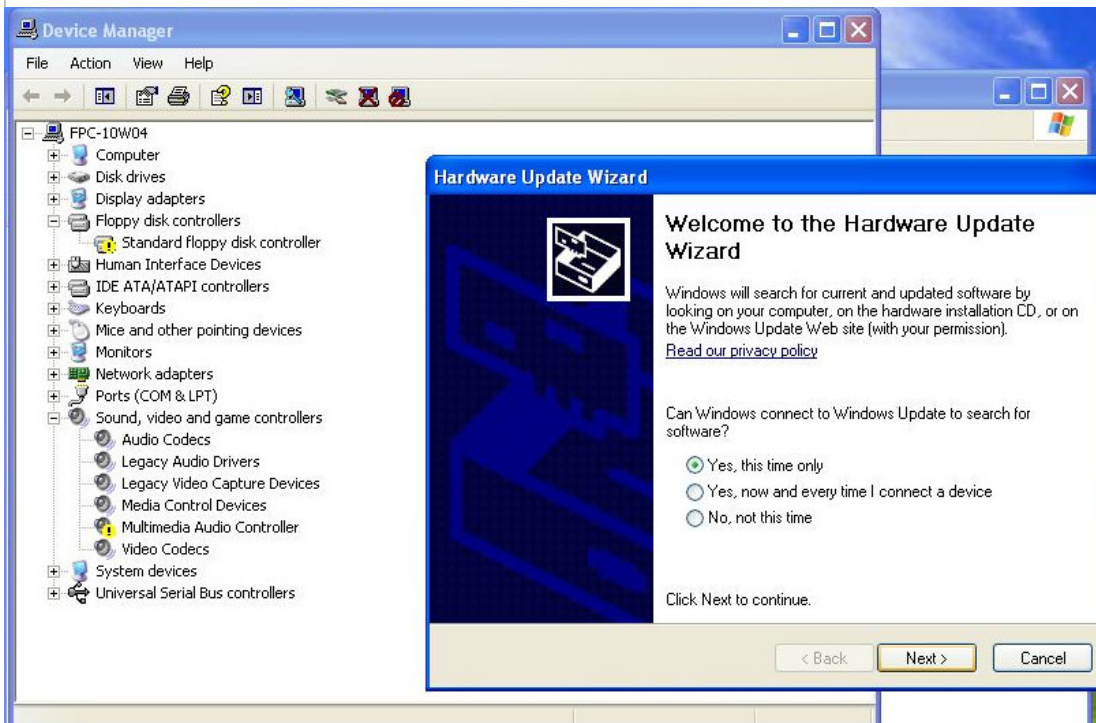
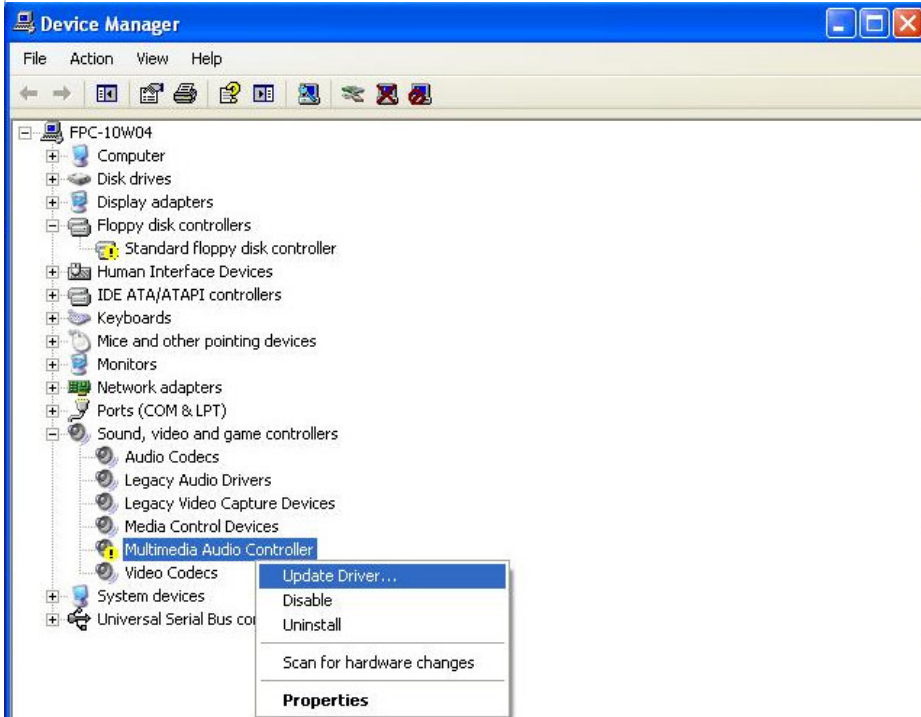
Avalue USA
 sales@avalue-usa.com
 Tel: +1-732-578-0200
 Fax: +1-732-578-0250

BCM Advanced Research
 BCMSales@bcmcom.com
 Tel: +1-949-470-1888
 Fax: +1-949-470-0971

Avalue China
 sales.china@avalue.com.cn
 Tel: +86-21-5426-3399
 Fax: +86-21-6495-0370

Step 7:

Follow the following procedures to open “Device Manager” and update the driver for unrecognized device.



Avalue Technology Inc.

www.avalue.com.tw
sales@avalue.com.tw
Tel:+886-2-82262345
Fax:+886-2-82262777

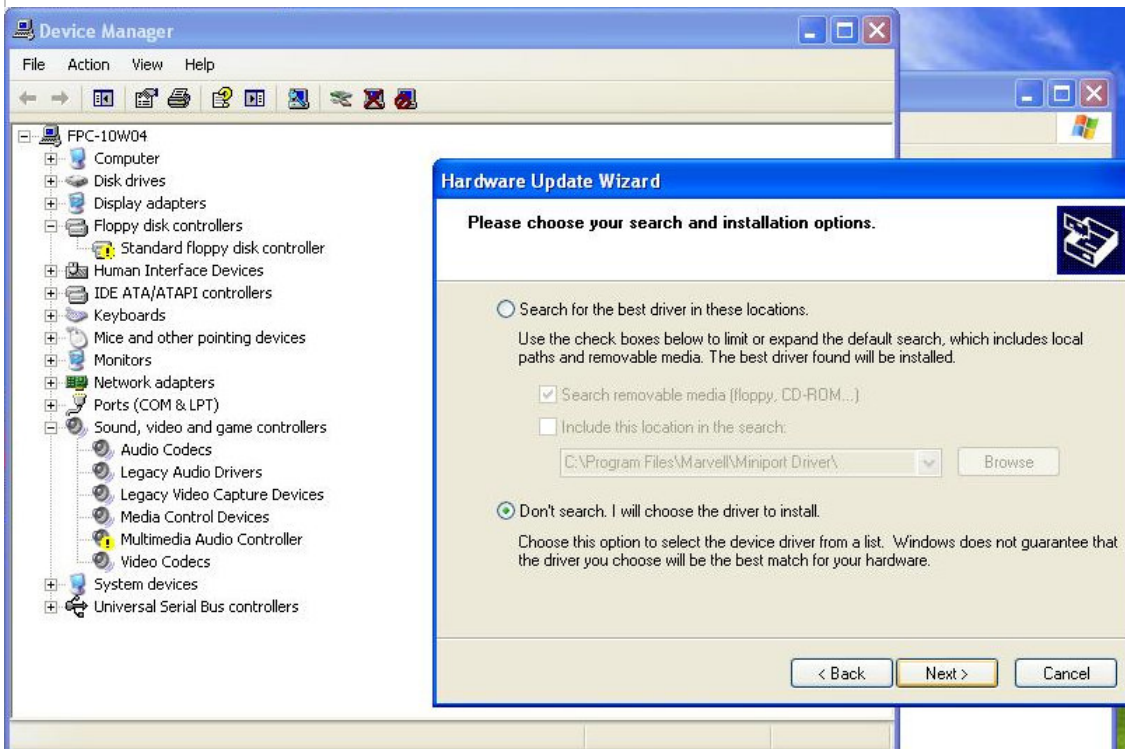
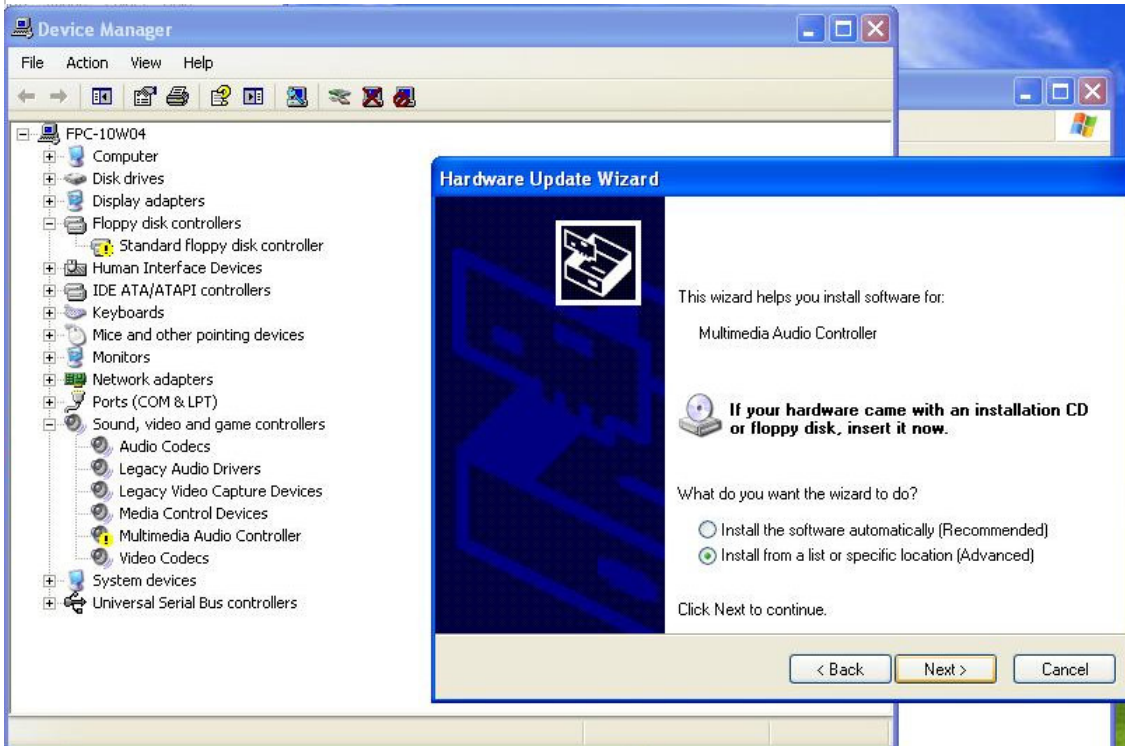
Avalue Europe
sales.europe@avalue.com.tw
Tel: +45-7025-0310
Fax: +45-4975-5026

Avalue USA
sales@avalue-usa.com
Tel: +1-732-578-0200
Fax: +1-732-578-0250

BCM Advanced Research
BCMSales@bcmcom.com
Tel: +1-949-470-1888
Fax: +1-949-470-0971

Avalue China
sales.china@avalue.com.cn
Tel: +86-21-5426-3399
Fax: +86-21-6495-0370

7F, 228, Lian-Cheng Road, Chung Ho City, Taipei, Taiwan R.O.C.



Avalue Technology Inc.

www.avalue.com.tw
 sales@avalue.com.tw
 Tel:+886-2-82262345
 Fax:+886-2-82262777

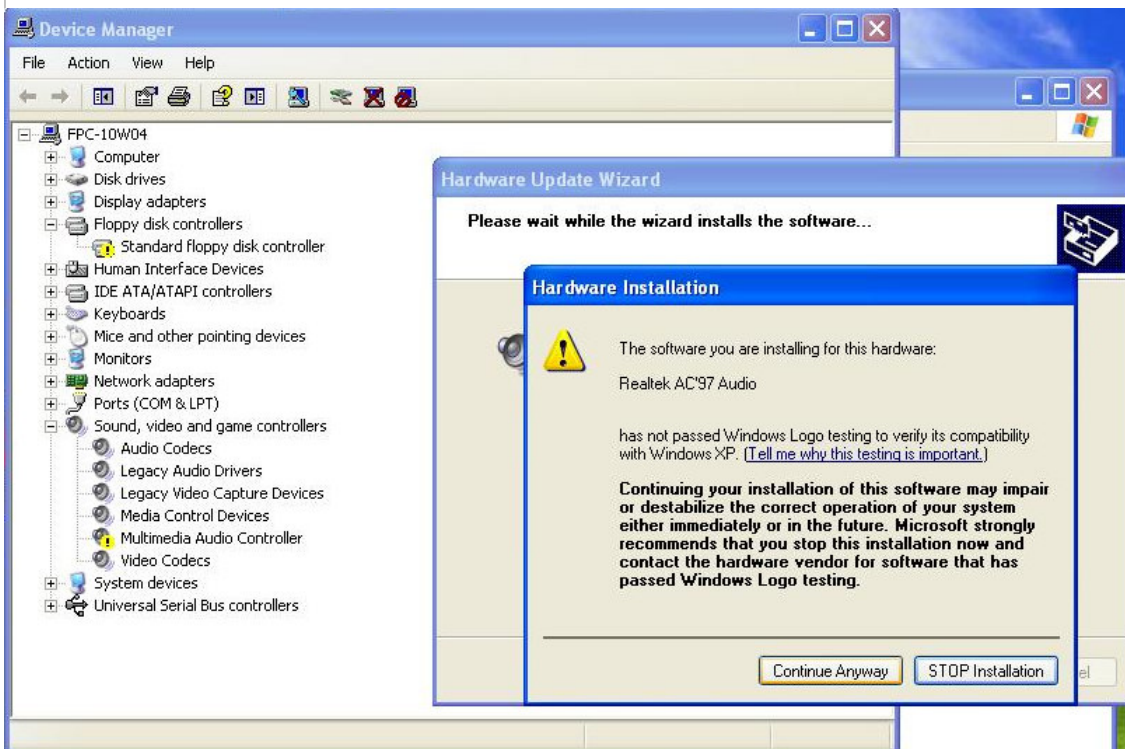
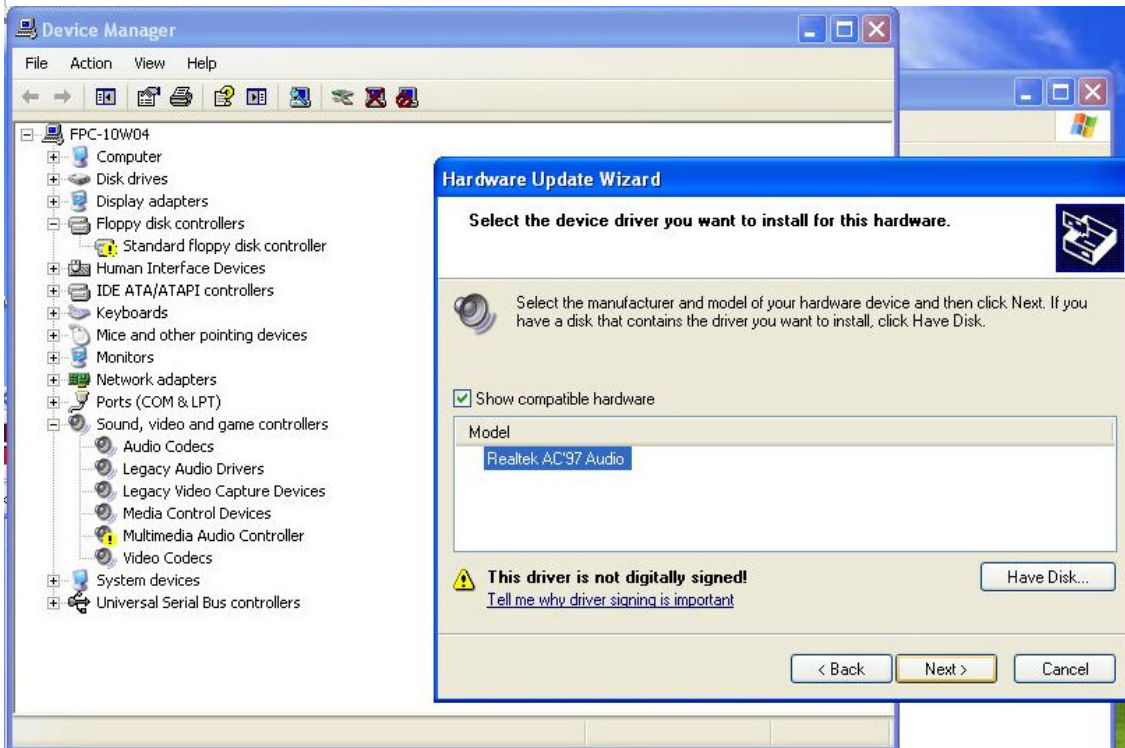
Avalue Europe
 sales.europe@avalue.com.tw
 Tel: +45-7025-0310
 Fax: +45-4975-5026

Avalue USA
 sales@avalue-usa.com
 Tel: +1-732-578-0200
 Fax: +1-732-578-0250

BCM Advanced Research
 BCM5Sales@bcmcom.com
 Tel: +1-949-470-1888
 Fax: +1-949-470-0971

Avalue China
 sales.china@avalue.com.cn
 Tel: +86-21-5426-3399
 Fax: +86-21-6495-0370

7F, 228, Lian-Cheng Road, Chung Ho City, Taipei, Taiwan R.O.C.



Avalue Technology Inc.

www.avalue.com.tw
 sales@avalue.com.tw
 Tel: +886-2-82262345
 Fax: +886-2-82262777

Avalue Europe
 sales.europe@avalue.com.tw
 Tel: +45-7025-0310
 Fax: +45-4975-5026

Avalue USA
 sales@avalue-usa.com
 Tel: +1-732-578-0200
 Fax: +1-732-578-0250

BCM Advanced Research
 BCM5ales@bcmcom.com
 Tel: +1-949-470-1888
 Fax: +1-949-470-0971

Avalue China
 sales.china@avalue.com.cn
 Tel: +86-21-5426-3399
 Fax: +86-21-6495-0370

7F, 228, Lian-Cheng Road, Chung Ho City, Taipei, Taiwan R.O.C.



Step 8:

There will be one device which is unrecognized. Which is “Standard disk controller”.

It can be ignored.

The cause is “Windows 2000 and Windows XP claim IRQ-6 settings even if floppy disk controllers are not present”.

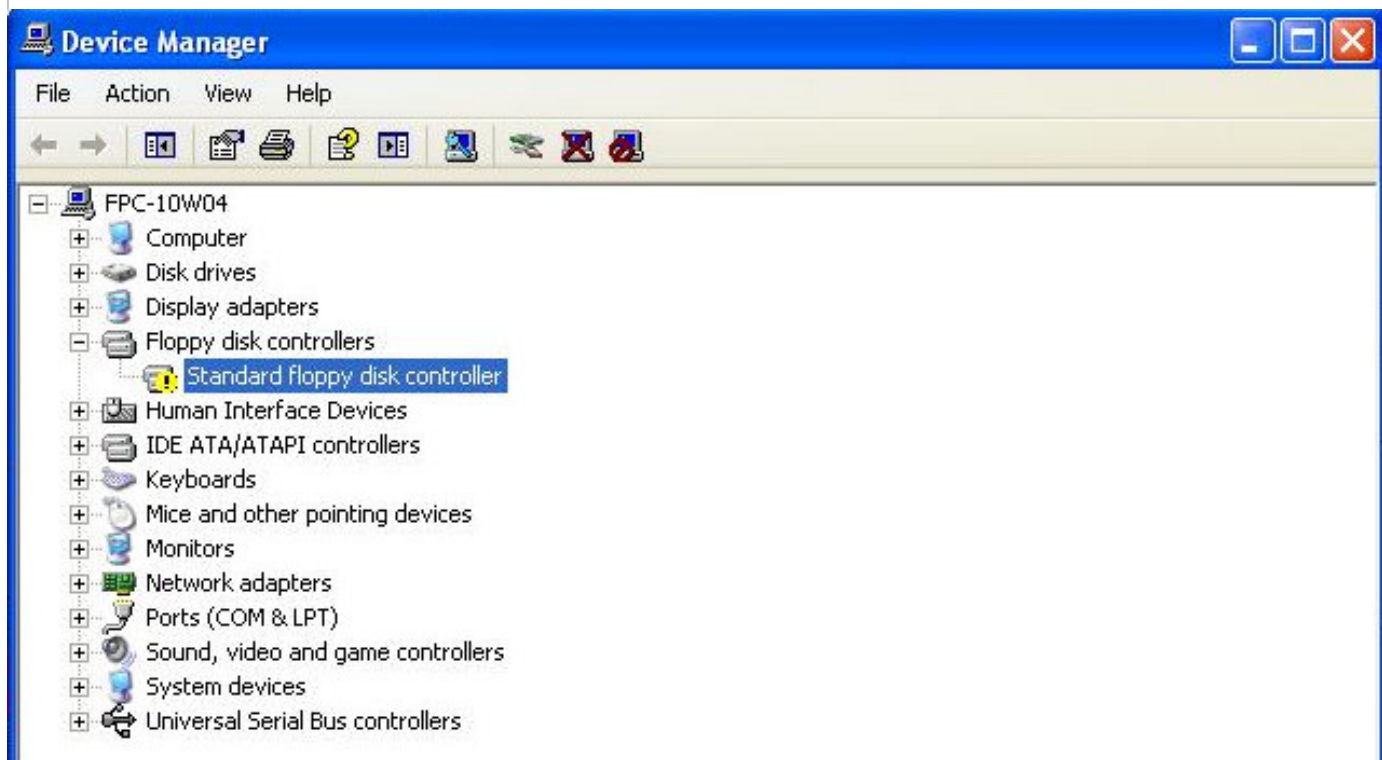
Windows web site has description as below:

This issue can occur because in non-ACPI-based systems that use a Plug and Play BIOS, Ntdetect.com always reports a device node for the floppy disk controller on x86-based systems.

For ACPI-based systems, Acpi.sys enumerates floppy disk controllers from BIOS tables that are exported to the operating system; only devices that are present are reported in this file.

Refer to <http://support.microsoft.com/kb/275180/en-us>

That means, if we used non-ACPI-based systems such as APM, that might occur.



Step 9:

We can try to shutdown the FPC-10W04 to check whether the message “It is now safe to turn off your computer” appears or not after make sure all devices driver are installed except “Standard disk controller”.

Avalue Technology Inc.

www.avalue.com.tw
sales@avalue.com.tw
Tel:+886-2-82262345
Fax:+886-2-82262777

Avalue Europe
sales.europe@avalue.com.tw
Tel: +45-7025-0310
Fax: +45-4975-5026

Avalue USA
sales@avalue-usa.com
Tel: +1-732-578-0200
Fax: +1-732-578-0250

7F, 228, Lian-Cheng Road, Chung Ho City, Taipei, Taiwan R.O.C.
BCM Advanced Research
BCMSales@bcmcom.com
Tel: +1-949-470-1888
Fax: +1-949-470-0971

Avalue China
sales.china@avalue.com.cn
Tel: +86-21-5426-3399
Fax: +86-21-6495-0370



AE : Fox Hsu

Date : 2012/6/11

Avalue Technology Inc.

7F, 228, Lian-Cheng Road, Chung Ho City, Taipei, Taiwan R.O.C.

www.avalue.com.tw
sales@avalue.com.tw
Tel:+886-2-82262345
Fax:+886-2-82262777

Avalue Europe
sales.europe@avalue.com.tw
Tel: +45-7025-0310
Fax: +45-4975-5026

Avalue USA
sales@avalue-usa.com
Tel: +1-732-578-0200
Fax: +1-732-578-0250

BCM Advanced Research
BCM5ales@bcmcom.com
Tel: +1-949-470-1888
Fax: +1-949-470-0971

Avalue China
sales.china@avalue.com.cn
Tel: +86-21-5426-3399
Fax: +86-21-6495-0370