

FAQ / Application Note

Subject : Audio Setting for EBM-945GSE B with ALC892 Audio Chipset

FAQ Document No: S12009	Date: 2012/07/17
Model Name. EBM-945GSE version B	Rev. A1
Category: <input type="checkbox"/> General <input type="checkbox"/> H/W <input checked="" type="checkbox"/> S/W <input type="checkbox"/> Others, <u>Setting</u>	

Purpose :

Because on EBM-945GSE version B, the audio chipset was upgraded to ALC892, some signals setting were changed.

Per hardware design of EBM-945GSE, ALC892 works in max **6CH Speaker**. You can change setting in Realtek audio AP.



Avalue Technology Inc.

www.avalue.com.tw
sales@avalue.com.tw
Tel: +886-2-82262345
Fax: +886-2-82262777

Avalue Europe
sales.europe@avalue.com.tw
Tel: +45-7025-0310
Fax: +45-4975-5026

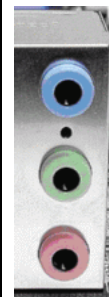



Avalue USA
sales@avalue-usa.com
Tel: +1-732-578-0200
Fax: +1-732-578-0250

BCM Advanced Research
BCMSales@bcmcom.com
Tel: +1-949-470-1888
Fax: +1-949-470-0971

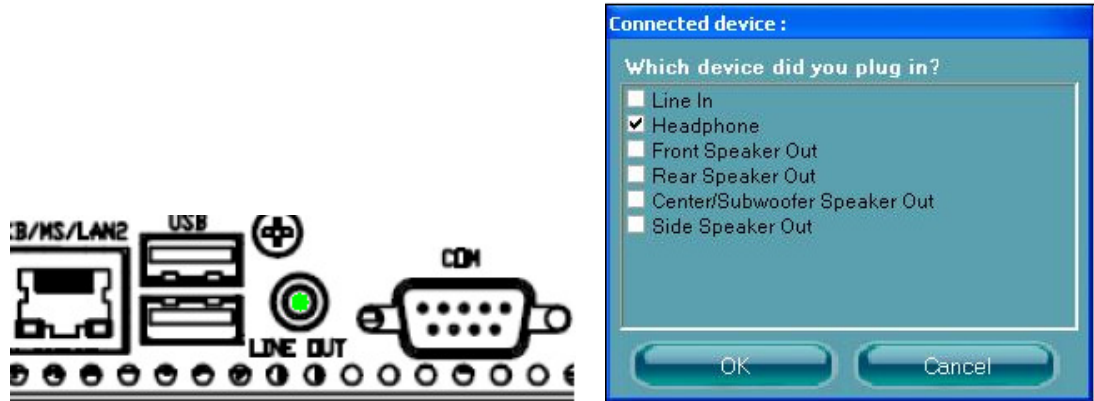
Avalue China
sales.china@avalue.com.cn
Tel: +86-21-5426-3399
Fax: +86-21-6495-0370


7F, 228, Lian-Cheng Road, Chung Ho City, Taipei, Taiwan R.O.C.

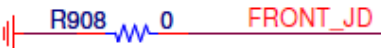
Analog I/O Pins		2 channels	4 channels	6 channels
Output	Front Out (Lineout L/R)	V	V	V
	Rear Speaker Out (surround out L/R)		V	V
	Center Out			V
	Subwoofer Speaker Out (LFE Out)			V
Input	Line in (L/R)	V	V	V
	Mic in (L/R)	V	V	V

Connector	Description
	<p>Standard AC'97 only support Front Output ( Green) · Line in ( Blue) · Mic in ( Pink) 。</p> <p>When you set up ALC892 as 6CH Speaker output, then</p> <p>Lin in will be switched to Rear Speaker Output,</p> <p>Mic in will be switched to Center/Subwoofer Speaker Output.</p>

The audio connector in the back panel detects jack automatically. If you plug a jack in it, you can see the Realtek AP finds a Headphone plug in the system. Because of hardware design, all output sounds from **JAUD1** connector are disabled.



Per hardware design, the Pin **LineOut_JD (Front_JD)** in **JAUD1** is connected to **GND**, so the Jack is considered as plug-in always. System won't pup out message when you plug/remove audio jack in **LineOut** ( Green)



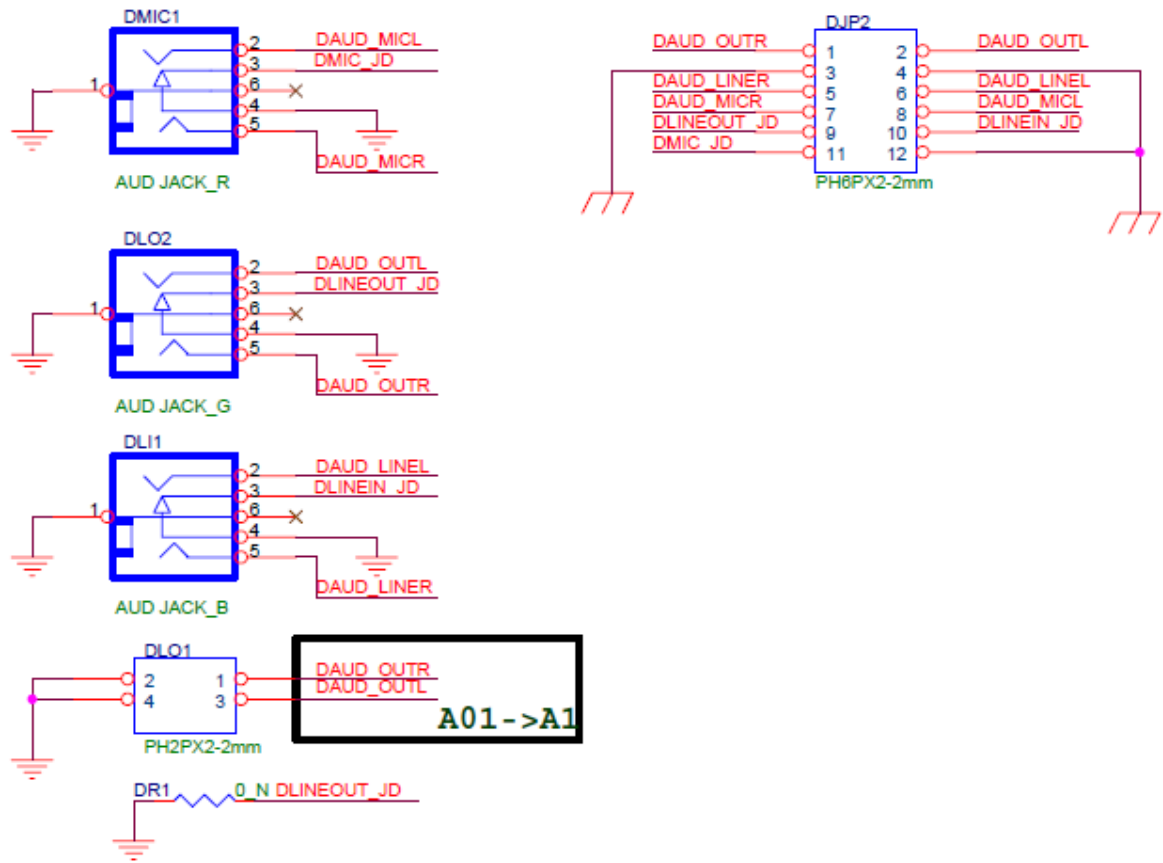
Please wire signals in correct group when you try to make an audio connector for **JAUD1**.

Signal	PIN	PIN	Signal
GND	12	11	MIC_JD
LINEIN_JD	10	9	LINEOUT_JD
AUD_MICL	8	7	AUD_MICR
AUD_LINEL	6	5	AUD_LINER
GND	4	3	GND
AUD_OUTL	2	1	AUD_OUTR

Function	Function pin (Detect pin)
Audio Out	1, 2 (9)
Line In	5, 6 (10)
Mic In	7, 8 (11)

Here is suggestion circuit for your reference.

Audio Con.



Avalue Technology Inc.

www.avalue.com.tw
sales@avalue.com.tw
Tel: +886-2-82262345
Fax: +886-2-82262777

Avalue Europe
sales.europe@avalue.com.tw
Tel: +45-7025-0310
Fax: +45-4975-5026

Avalue USA
sales@avalue-usa.com
Tel: +1-732-578-0200
Fax: +1-732-578-0250

BCM Advanced Research
BCMSales@bcmcom.com
Tel: +1-949-470-1888
Fax: +1-949-470-0971

Avalue China
sales.china@avalue.com.cn
Tel: +86-21-5426-3399
Fax: +86-21-6495-0370