

FAQ / Application Note

Subject : How setup S4 mode in ASM-AT270 and EBM-945GSE?

Document No: H10002

Date: 2010/03/31

Model Name. ASM-AT270 , EBM-945GSE

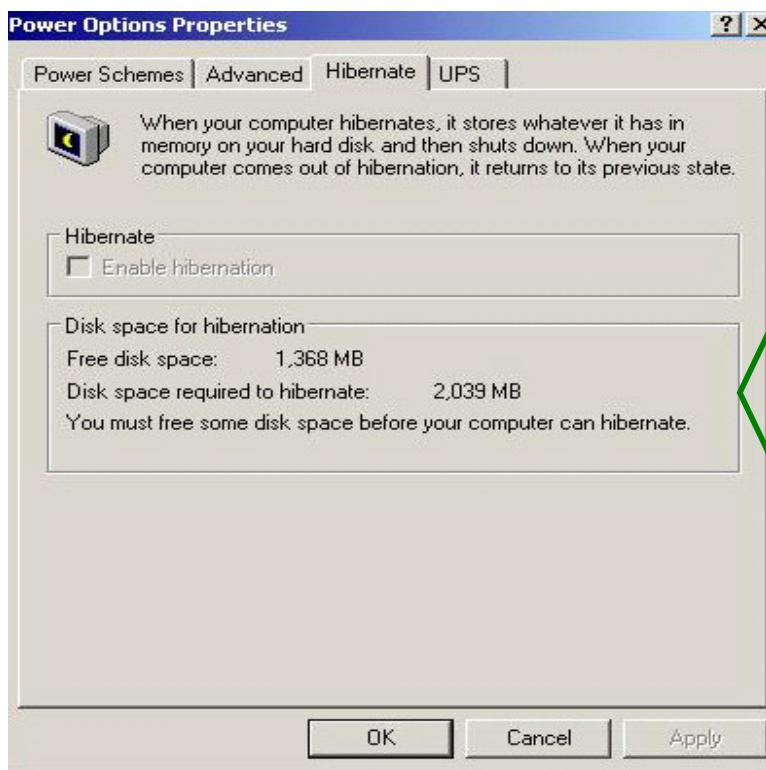
Rev. A1

Category: ☐General ☒H/W ☐S/W ☐Others, _____

Purpose : Into S4 (Suspend to Disk) mode

Please following procedure as below:

1. Reflash BIOS 1102.bin in ASM-AT270.
2. Reboot system and loading optimized defaults in CMOS setup utility.
3. Into OS WinXP, Press right button of mouse in desktop and select "Properties"
→ Screen Saver → Power → Hibernate → mark "enable Hibernation" → ok
And check storage free disk space if enough required to hibernate.



Disk space
Not enough

Avalue Technology Inc.

www.avalue.com.tw
sales@avalue.com.tw
Tel: +886-2-82262345
Fax: +886-2-82262777

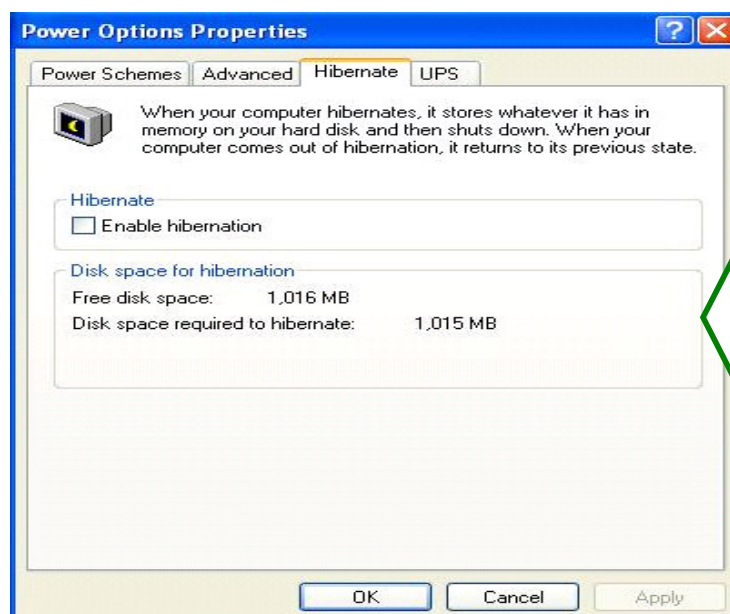
Avalue Europe
sales.europe@avalue.com.tw
Tel: +45-7025-0310
Fax: +45-4975-5026

Avalue USA
sales@avalue-usa.com
Tel: +1-732-578-0200
Fax: +1-732-578-0250

BCM Advanced Research
BCMSales@bcmcom.com
Tel: +1-949-470-1888
Fax: +1-949-470-0971

7F, 228, Lian-Cheng Road, Chung Ho City, Taipei, Taiwan R.O.C.

Avalue China
sales.china@avalue.com.cn
Tel: +86-21-5426-3399
Fax: +86-21-6495-0370



Disk space
enough

4. Start → Turn off computer → keep Press “Shift” button, the “stand by” icon will be changed to “Hibernate”



5. Click “Hibernate” button, start S4 mode

Remark: When running S4 mode, please not unplug power cable, because of still need S4 standby power for ASM-AT270.

-end