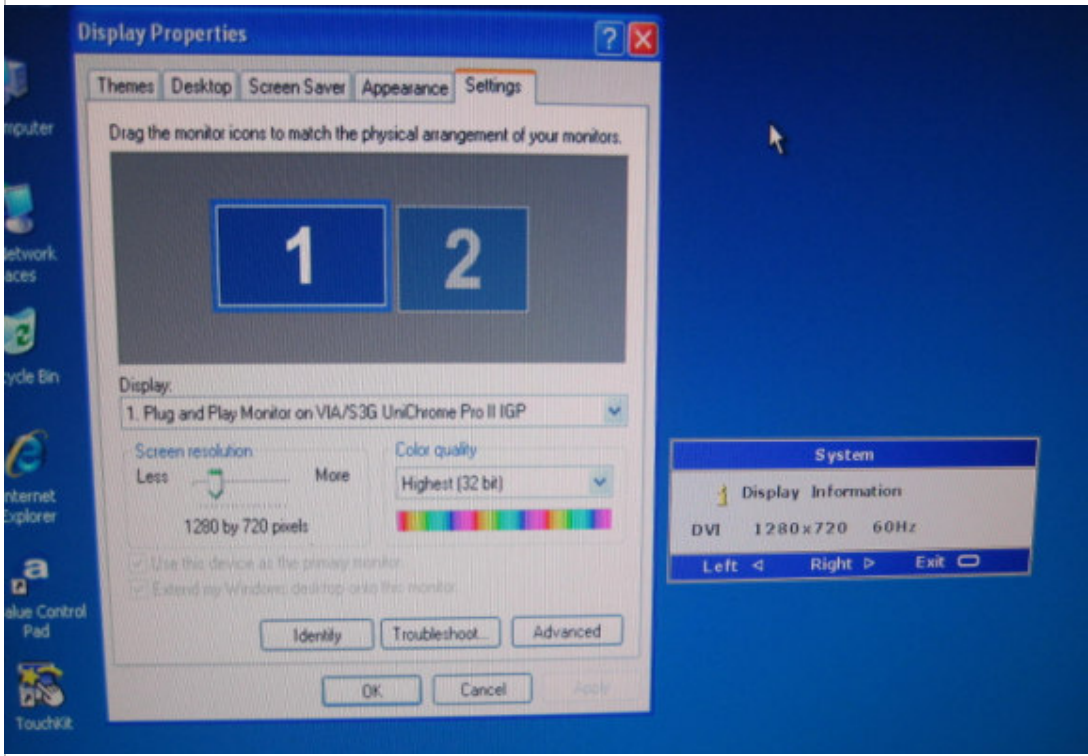
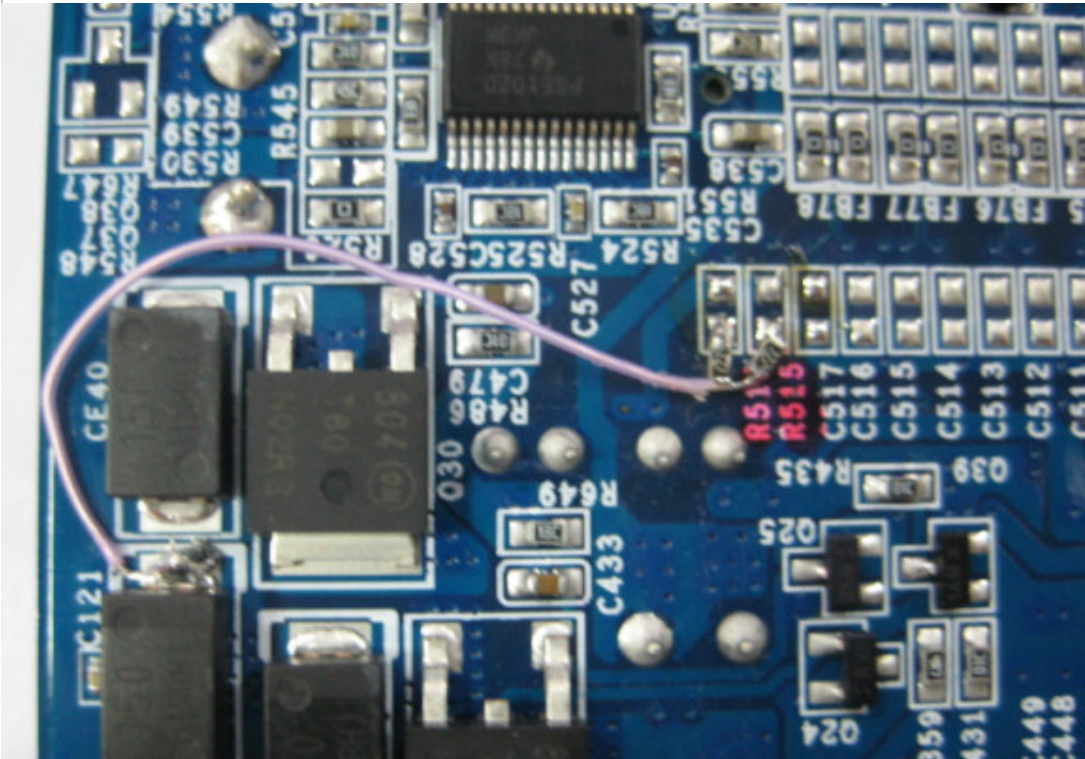


## FAQ / Application Note

<b>Subject : How to solve ASM-CX700 resolutions 1280X720</b>	
<b>FAQ Document No: H10008</b>	<b>Date: 2010/02/01</b>
<b>Model Name. ASM-CX700</b>	<b>Rev. A1</b>
<b>Category:</b> <input type="checkbox"/> General <input checked="" type="checkbox"/> H/W <input type="checkbox"/> S/W <input type="checkbox"/> Others, <u>寫小分類</u>	
<b>Purpose :</b> If the customer wants to connect monitor for DVI and resolution for 1280X768, It can not support more than above the resolution of 1280X768	

Can EBM/ASM-CX700 support 1280X720 resolution?  
 As our tested, if it connected more then 19" monitor, the voltage is insufficient  
 Sometimes, the resolution can not be normal  
 And "Display Devices", the Panel Type also not correct  
 Therefore, for the issue, please add the wire between C121 and R514, R515  
 Please refer to the pictures as below





**Avalue Technology Inc.**

www.avalue.com.tw  
sales@avalue.com.tw  
Tel:+886-2-82262345  
Fax:+886-2-82262777

Avalue Europe  
sales.europe@avalue.com.tw  
Tel: +45-7025-0310  
Fax: +45-4975-5026

Avalue USA  
sales@avalue-usa.com  
Tel: +1-732-578-0200  
Fax: +1-732-578-0250

BCM Advanced Research  
BCM5ales@bcmcom.com  
Tel: +1-949-470-1888  
Fax: +1-949-470-0971

Avalue China  
sales.china@avalue.com.cn  
Tel: +86-21-5426-3399  
Fax: +86-21-6495-0370

7F, 228, Lian-Cheng Road, Chung Ho City, Taipei, Taiwan R.O.C.