



FAQ / Application Note

Subject : Enable ECM-3611 CLE266 3D Acceleration under Linux Fedora Core3.

FAQ Document No: S09006

Date: 2009/01/22

Model Name. ECM-3611

Rev. A1

Category: General H/W S/W Others, Driver

Purpose :

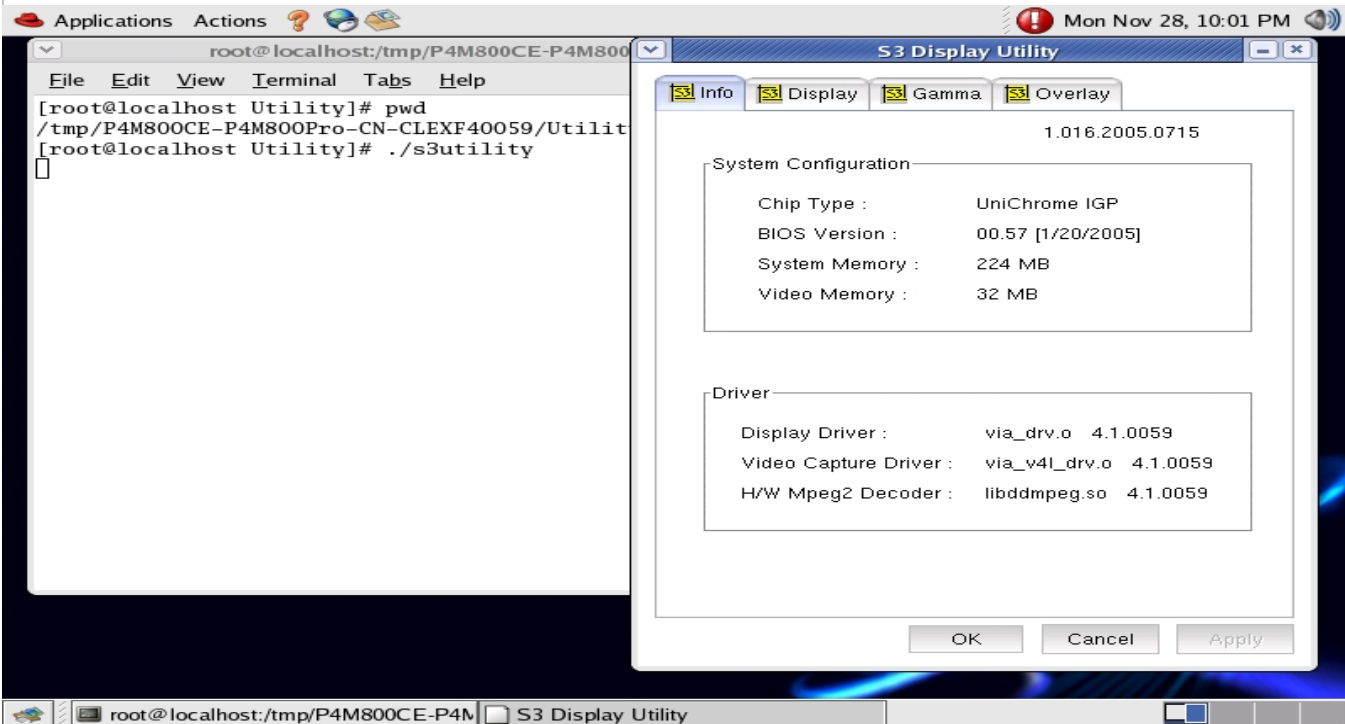
Without enable 3d acceleration will cause Xwindow running performance down.

Environment and condition:

For ECM-3611, we got and verified the CLE266 driver for Fedora Core 3,
Download the proper driver from the hyper-link as below:

<http://drivers.viaarena.com/p4m800ce-p4m800pro-cn-clexf40059.tgz>

Extracting the package, it create folder " p4m800ce-p4m800pro-cn-clexf40059" , in this folder, execute the ".vinstall". Then, for step 1, choose CPU type, just type "1" for continue the installation. After finished the installation, please restart the Linux and xwindow, you can verifying the installation by application "s3utility" from the extracted folder's sub directory"Utility" in terminal mode.



Avalue Technology Inc.

7F, 228, Lian-Cheng Road, Chung Ho City, Taipei, Taiwan R.O.C.

www.avalue.com.tw
sales@avalue.com.tw
Tel:+886-2-82262345
Fax:+886-2-82262777

Avalue Europe
sales.europe@avalue.com.tw
Tel: +45-7025-0310
Fax: +45-4975-5026

Avalue USA
sales@avalue-usa.com
Tel: +1-732-578-0200
Fax: +1-732-578-0250

BCM Advanced Research
BCMSales@bcmcom.com
Tel: +1-949-470-1888
Fax: +1-949-470-0971

Avalue China
sales.china@avalue.com.cn
Tel: +86-21-5426-3399
Fax: +86-21-6495-0370



Or you can check the Xwindows log file `/var/log/Xorg.0.log`, you will find the Log described as
"(II) VIA(0): **3D** Engine has been initialized." is shown as below:

```
.....  
.....  
(II) VIA(0): 3D Engine has been initialized.  
drmOpenDevice: node name is /dev/dri/card0  
drmOpenDevice: open result is 6, (OK)  
drmOpenDevice: node name is /dev/dri/card0  
drmOpenDevice: open result is 6, (OK)  
drmOpenByBusid: Searching for BusID PCI:1:0:0  
drmOpenDevice: node name is /dev/dri/card0  
drmOpenDevice: open result is 6, (OK)  
drmOpenByBusid: drmOpenMinor returns 6  
drmOpenByBusid: drmGetBusid reports pci:0000:01:00.0  
(II) VIA(0): [drm] DRM interface version 1.2  
(II) VIA(0): [drm] created "via" driver at busid "PCI:1:0:0"  
(II) VIA(0): [drm] added 8192 byte SAREA at 0xdebd3000  
(II) VIA(0): [drm] mapped SAREA 0xdebd3000 to 0xb5c9c000  
(II) VIA(0): [drm] framebuffer handle = 0xd8000000  
(II) VIA(0): [drm] added 1 reserved context for kernel  
(II) VIA(0): [dri] visual configs initialized.  
(II) VIA(0): [drm] register handle = 0xde000000  
(II) VIA(0): [drm] mmio Registers = 0xde000000  
(II) VIA(0): [dri] mmio mapped.  
(II) VIA(0): VIAInternalScreenInit  
(II) VIA(0): Using XFree86 Acceleration Architecture (XAA)  
Screen to screen bit blits  
Solid filled rectangles  
8x8 mono pattern filled rectangles  
8x8 color pattern filled rectangles  
Solid Lines  
Dashed Lines  
Image Writes  
Offscreen Pixmaps  
Setting up tile and stipple cache:
```



32 128x128 slots
10 256x256 slots
32 8x8 color pattern slots

(==) VIA(0): Backing store disabled
(II) VIA(0): [drm] drmAgpEnabled succeeded
(II) VIA(0): [drm] agpAddr = 0xe0000000
(II) VIA(0): [drm] agpBase = (nil)
(II) VIA(0): [drm] agpAddr = 0xe0000000
(II) VIA(0): [drm] agpSize = 0x01e00000
(II) VIA(0): [drm] agp physical addr = 0x00000000
(II) VIA(0): [dri] use agp.
(II) VIA(0): [drm] FBFreeStart= 0x00400000 FBFreeEnd= 0x01fbc000 FBSize= 0x01bbe000
(II) VIA(0): [dri] frame buffer initialized.
(II) VIA(0): X context handle = 0x00000001
(II) VIA(0): [drm] installed DRM signal handler
(II) VIA(0): [DRI] installation complete
(II) VIA(0): [dri] kernel data initialized.
(II) VIA(0): [drm] Initialized AGP ring-buffer, size 0x200000 at AGP offset 0x1e00000.
(II) VIA(0): direct rendering enabled

Thus, the CLE266 driver has been enabled the 3D Acceleration.