

FAQ / Application Note

Subject : How to install OS in EXC-2743 Micro PC

FAQ Document No: S09001

Date: 2009/01/09

Model Name. EXC-2743

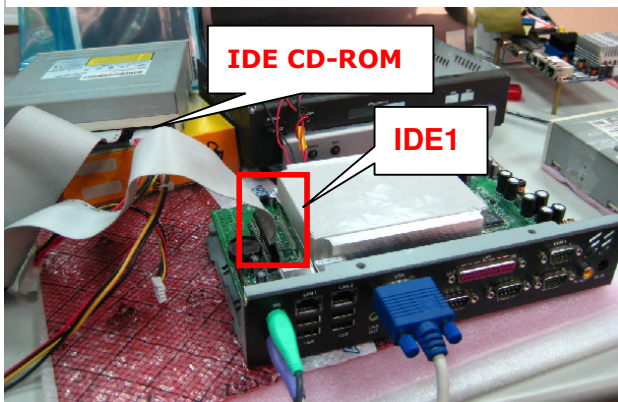
Rev. A1

Category: General H/W S/W Others, Installation

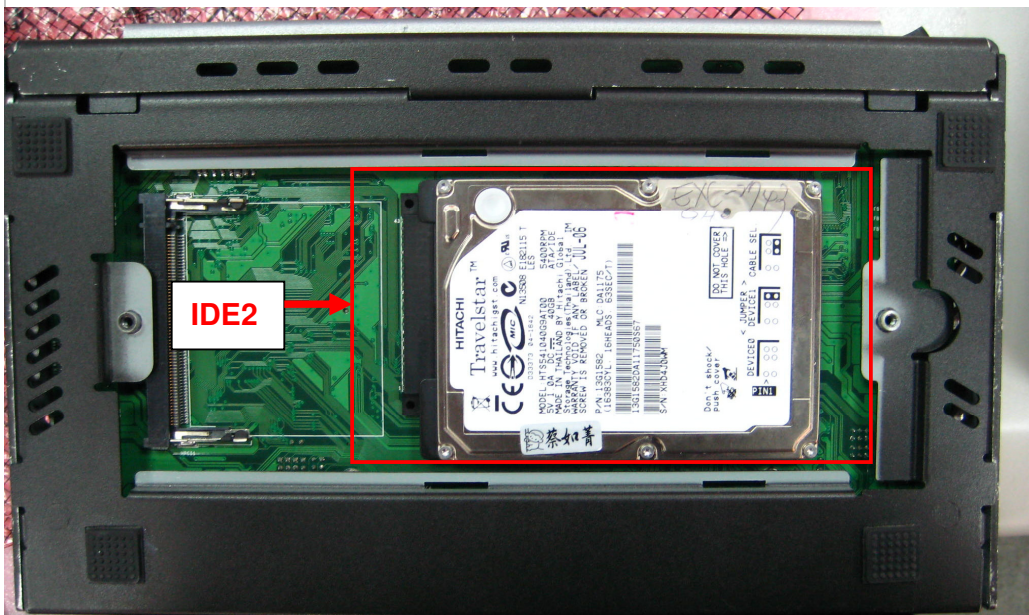
Purpose : How to install OS to storage HDD in EXC-2743.

Please first confirm 44pin IDE cable for CD-ROM on IDE1 and storage OS HDD on IDE2.

- Inside IDE1(44pin IDE interface)



- The system bottom IDE2 (44pin IDE interface)



Avalue Technology Inc.

7F, 228, Lian-Cheng Road, Chung Ho City, Taipei, Taiwan R.O.C.

www.avalue.com.tw
sales@avalue.com.tw
Tel:+886-2-82262345
Fax:+886-2-82262777

Avalue Europe
sales.europe@avalue.com.tw
Tel: +45-7025-0310
Fax: +45-4975-5026

Avalue USA
sales@avalue-usa.com
Tel: +1-732-578-0200
Fax: +1-732-578-0250

BCM Advanced Research
BCMSales@bcmcom.com
Tel: +1-949-470-1888
Fax: +1-949-470-0971

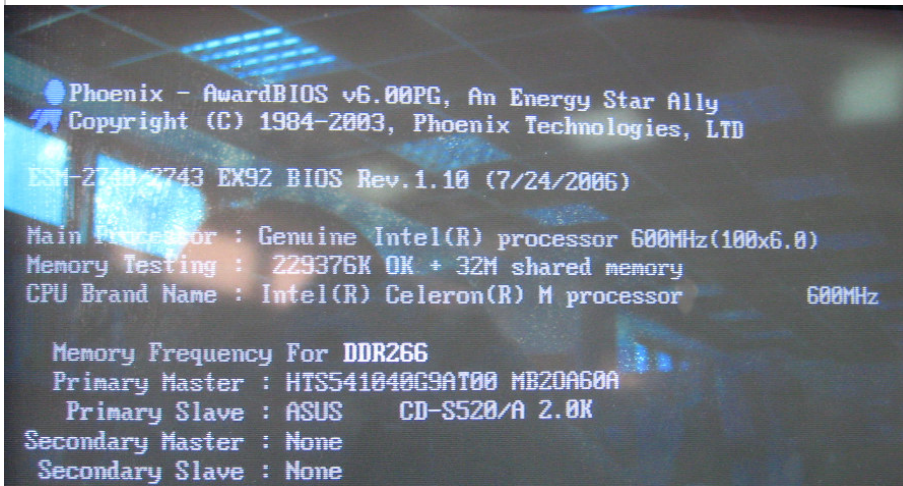
Avalue China
sales.china@avalue.com.cn
Tel: +86-21-5426-3399
Fax: +86-21-6495-0370

Please setup as below step by step:

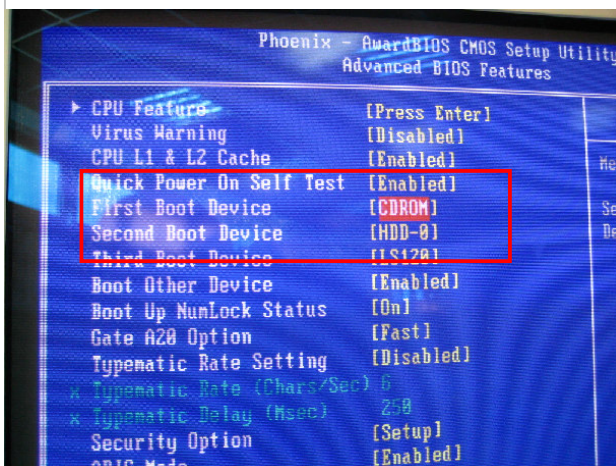
1. Insert CD-ROM in IDE1 and HDD in IDE2, K/B, Mouse, VGA, power cable and need equipment.
2. Power on this system.



In POST screen can detect CD-ROM and HDD.



3. Press "Delete" button enter BIOS setting, "Advanced BIOS features" "First boot device→CDROM" and " second boot device →HDD-0"



Avalue Technology Inc.

www.avalue.com.tw
 sales@avalue.com.tw
 Tel:+886-2-82262345
 Fax:+886-2-82262777

Avalue Europe
 sales.europe@avalue.com.tw
 Tel: +45-7025-0310
 Fax: +45-4975-5026

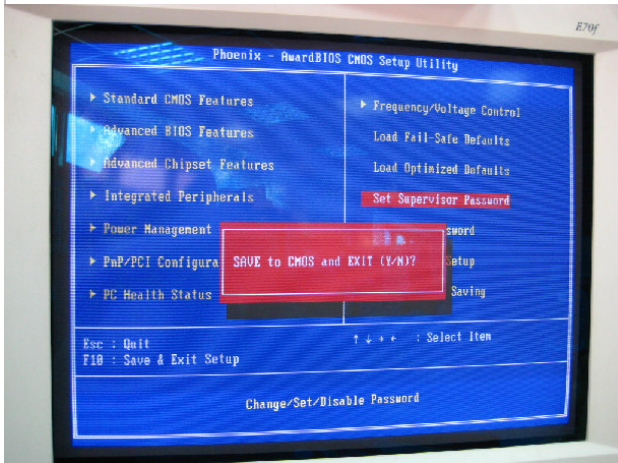
Avalue USA
 sales@avalue-usa.com
 Tel: +1-732-578-0200
 Fax: +1-732-578-0250

7F, 228, Lian-Cheng Road, Chung Ho City, Taipei, Taiwan R.O.C.

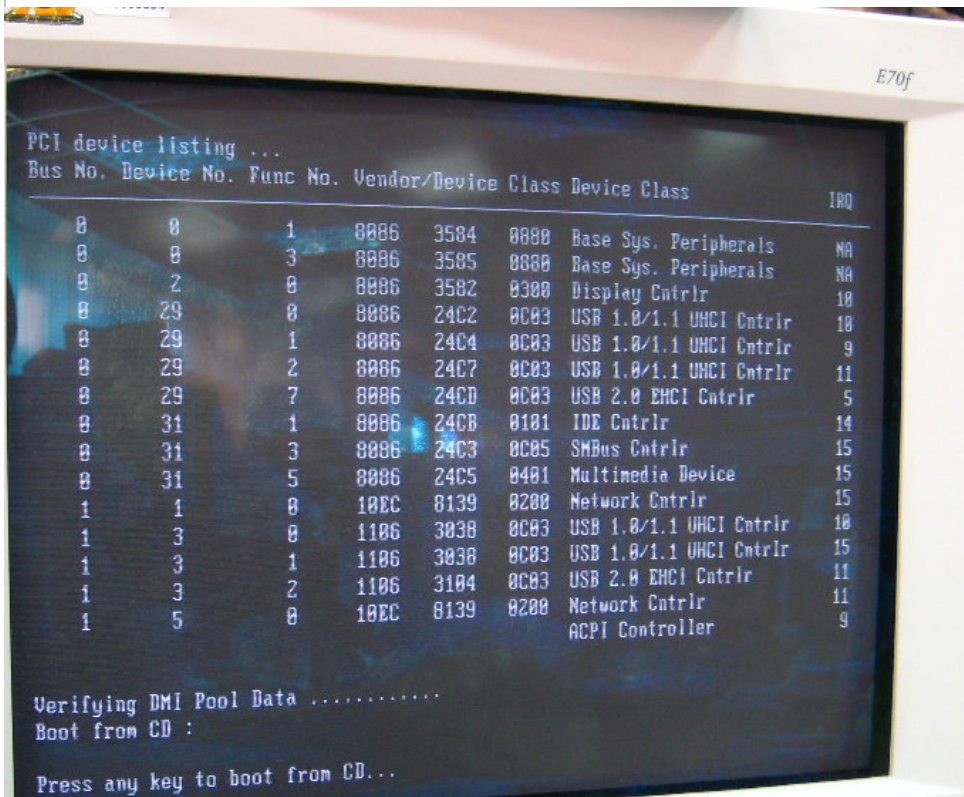
BCM Advanced Research
 BCM5Sales@bcmcom.com
 Tel: +1-949-470-1888
 Fax: +1-949-470-0971

Avalue China
 sales.china@avalue.com.cn
 Tel: +86-21-5426-3399
 Fax: +86-21-6495-0370

4. Save and reboot it then start install OS procedure



The system start install OS from CD-ROM.



Avalue Technology Inc.

www.avalue.com.tw
 sales@avalue.com.tw
 Tel:+886-2-82262345
 Fax:+886-2-82262777

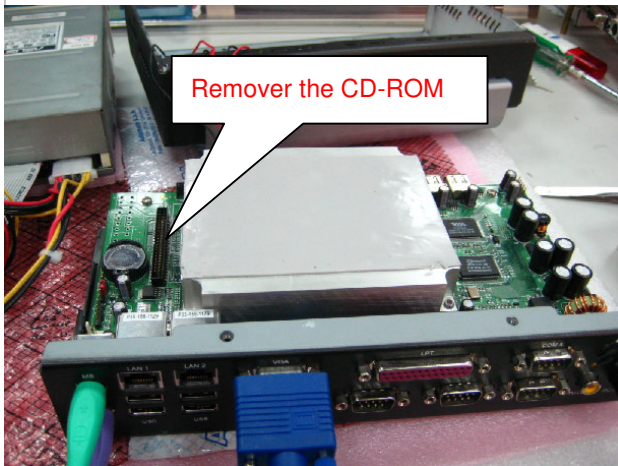
Avalue Europe
 sales.europe@avalue.com.tw
 Tel: +45-7025-0310
 Fax: +45-4975-5026

Avalue USA
 sales@avalue-usa.com
 Tel: +1-732-578-0200
 Fax: +1-732-578-0250

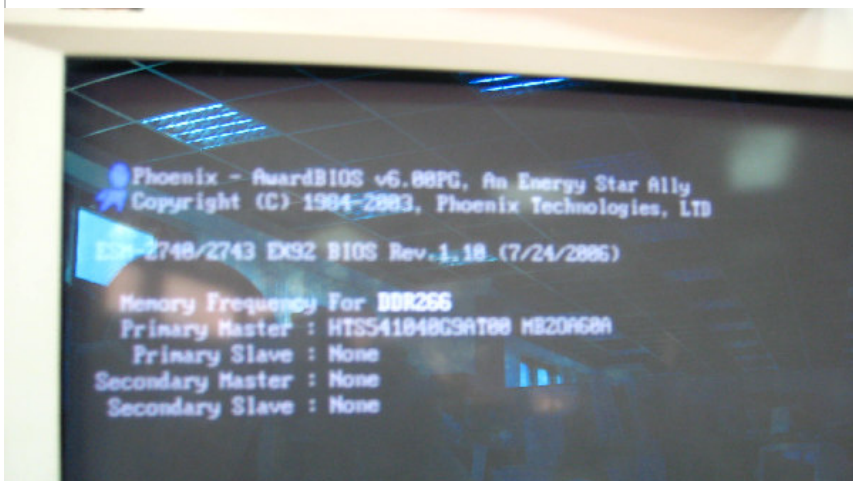
BCM Advanced Research
 BCM5Sales@bcmcom.com
 Tel: +1-949-470-1888
 Fax: +1-949-470-0971

Avalue China
 sales.china@avalue.com.cn
 Tel: +86-21-5426-3399
 Fax: +86-21-6495-0370

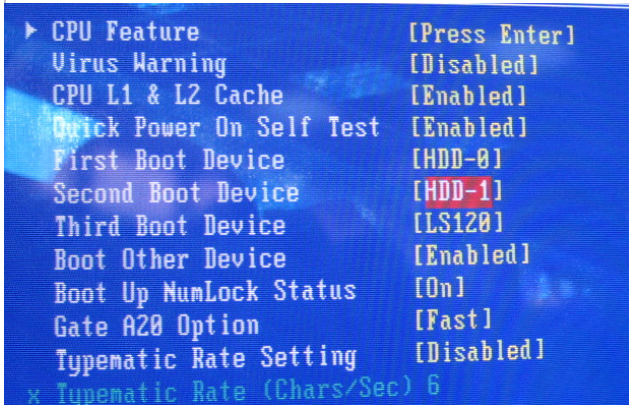
5. When finished install OS in HDD, turn off this system. Remove the CD-ROM device.



6. Turn on again, the system only detect HDD device in IDE2.



7. Into BIOS setting "Advanced BIOS features" First boot device→HDD-0".



Avalue Technology Inc.

www.avalue.com.tw
 sales@avalue.com.tw
 Tel:+886-2-82262345
 Fax:+886-2-82262777

Avalue Europe
 sales.europe@avalue.com.tw
 Tel: +45-7025-0310
 Fax: +45-4975-5026

Avalue USA
 sales@avalue-usa.com
 Tel: +1-732-578-0200
 Fax: +1-732-578-0250

7F, 228, Lian-Cheng Road, Chung Ho City, Taipei, Taiwan R.O.C.

BCM Advanced Research
 BCM5ales@bcmcom.com
 Tel: +1-949-470-1888
 Fax: +1-949-470-0971

Avalue China
 sales.china@avalue.com.cn
 Tel: +86-21-5426-3399
 Fax: +86-21-6495-0370

