

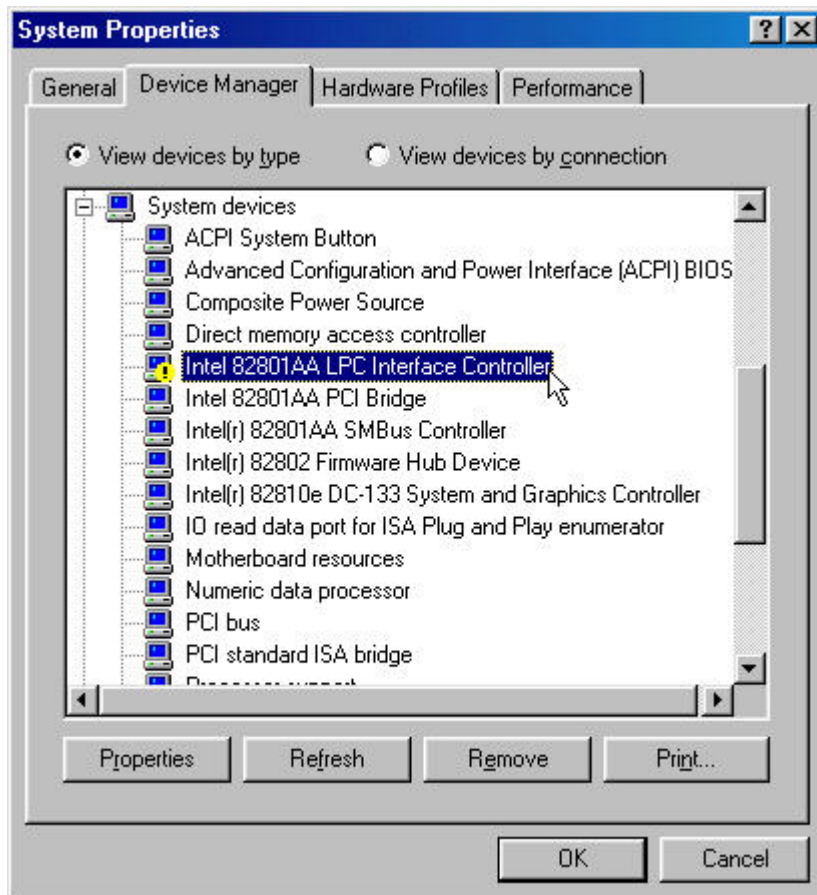


FAQ / Application Note

Subject : How to install ITE8888 PCI to ISA Bridge Win98 Driver On EMB-9160?	
FAQ Document No: S08014	Date: 2002/10/24
Model No. EMB-9160	Rev.A1
Category: General H/W S/W Others, _____	
Purpose : step by step to install ITE8888 driver under Win98	

Please follow following procedure to install ITE8888 PCI to ISA Bridge Driver under Win98.

1. When you finish to install device drivers (Video/Audio/Chipset/Network) for EMB-9160 under Win98, you will find a yellow mark on "Intel 82801AA LPC Interface Controller" in Device manager. Remove "Intel 82801AA LPC Interface Controller" and "PCI Standard ISA Bridge" from Device manager.





2. Delete "isapnp.vxd" in "c:\windows\system"
3. Reboot the system.
4. When the system run into Win98, system will ask for "PCI standard ISA Bridge" driver. Please direct the file patch to "ITE8888" Win98 driver, and then click ok to install it.