

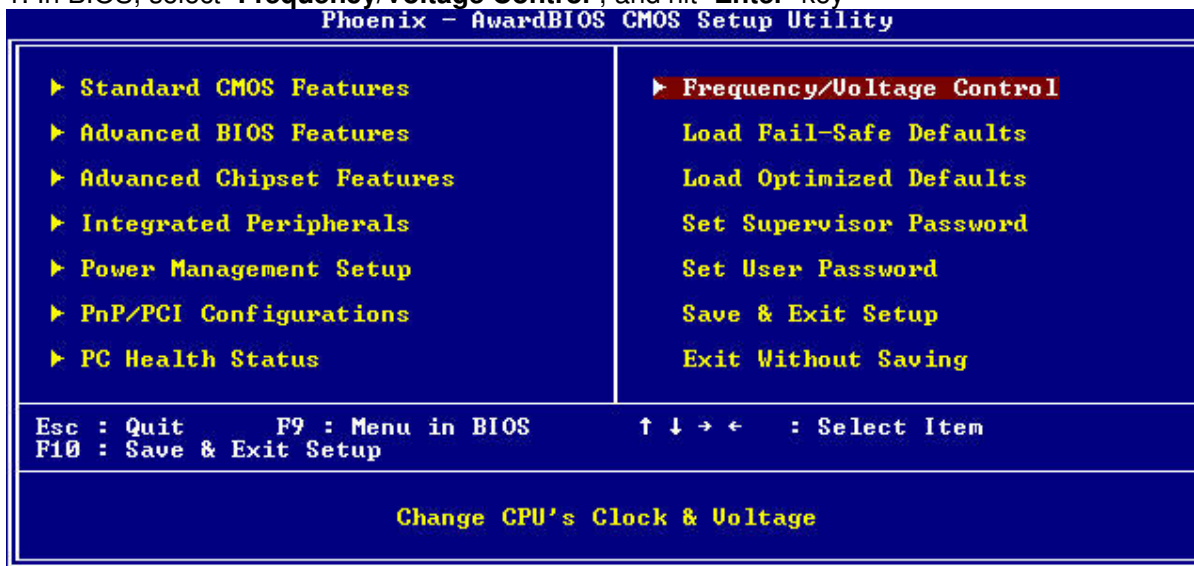


FAQ / Application Note

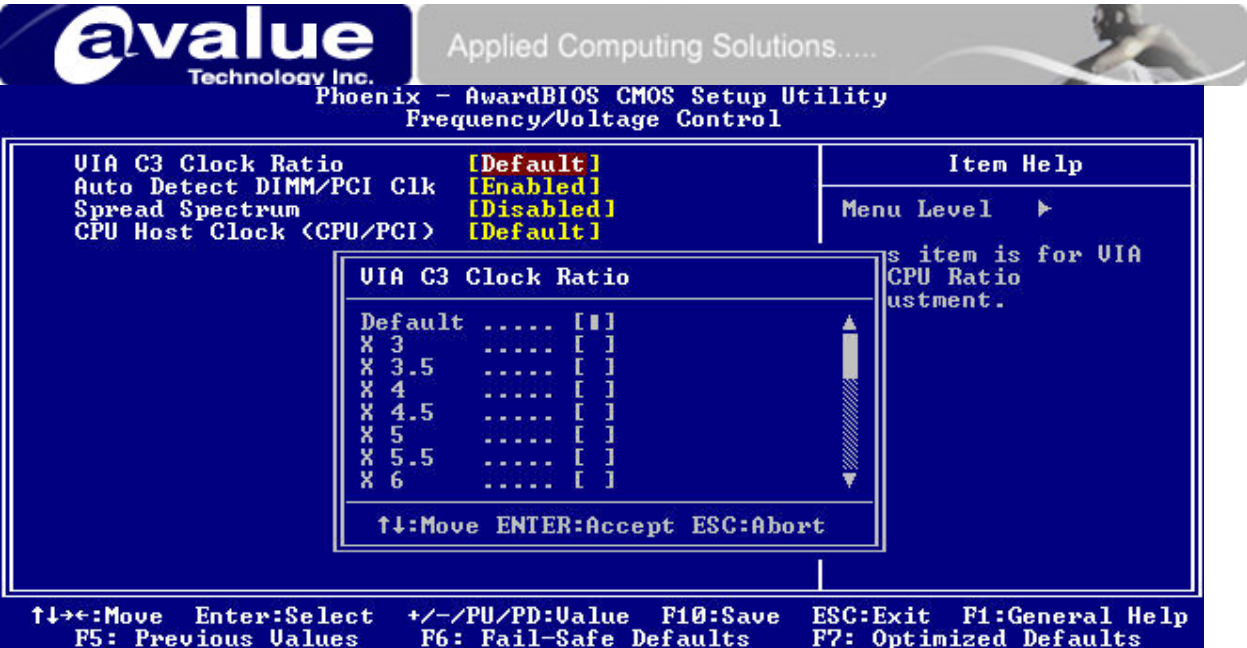
Subject : How to Adjust CPU Frequency on ECM-3610	
FAQ Document No: H08013	Date: 2002/09/16
Model No. ECM-3610	Rev. A1
Category: <input type="checkbox"/> General <input checked="" type="checkbox"/> H/W <input type="checkbox"/> S/W <input type="checkbox"/> Others, <u> SETUP </u>	
Purpose : ECM-3610 CPU frequency adjustment in BIOS.	

The default Clock Ratio for VIA Eden 667MHz is "5"
 After "Power On", hit "Del" key to enter BIOS setting menu.

- In BIOS, select "**Frequency/Voltage Control**", and hit "**Enter**" key

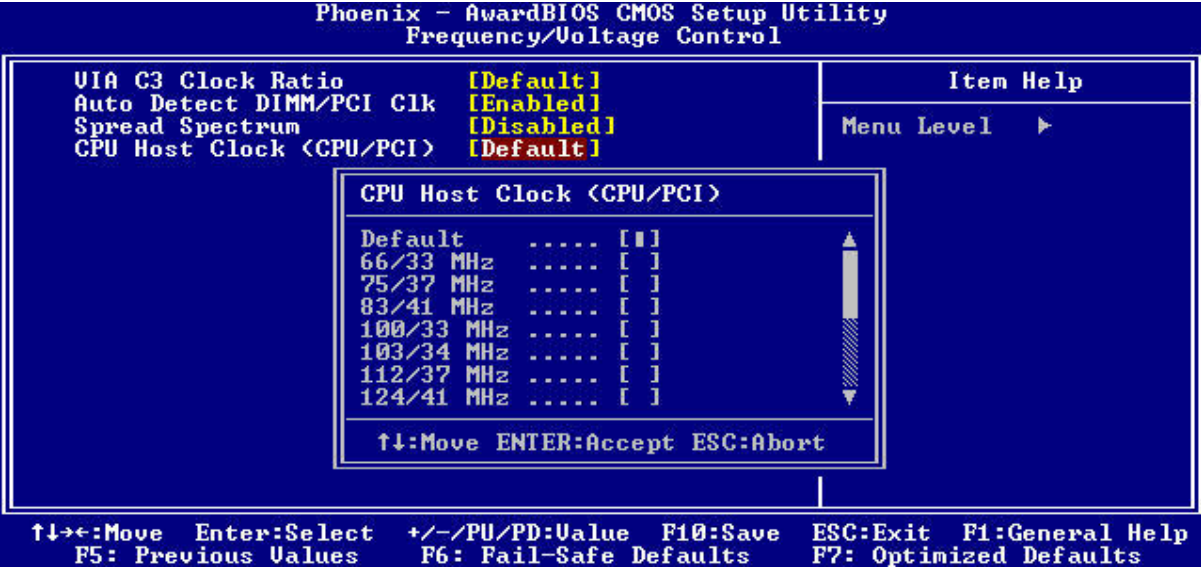


- Select "**VIA C3 Clock Ratio**", and hit "**Enter**" key.



Now, the CPU Frequency on ECM-3610 can be adjusted to “Higher” or “Lower” frequency level.

3. Select “CPU Host Clock <CPU/PCI>”, and hit “Enter” key.



Now, the CPU Host Clock (CPU/PCI) on ECM-3610 can be adjusted to “Higher” or “Lower” frequency level.

****WARNING: Adjusting CPU Frequency may cause unexpected damage on CPU or system unstable.**