



Smart Healthcare Solution

Registration
Outpatient Clinic
Health Station
Rehabilitation Center
Exam Room Solution
Nursing Station White Board
Ward Solution



Registration and Outpatient Clinic

Patients can simply get the sequence for the clinic and cashier via Patient Check-in Kiosk. This will improve patient experience and offer a more convenient hospital environment.

Patients then check-in in front of the treatment room with Digital Signage System, which can show the current sections, names of doctor and waiting number and is integrated with RFID/NFC smart card reader.



Health Station and Rehab Center

All of the real-time data like height and weight, blood pressure, and blood sugar levels are uploaded to the health cloud; the patients can check the results via their own devices and the doctor can easily receive the patients' latest health records.

Besides personal health cloud, Avalue provides console systems which can be embedded within fitness equipment. The console systems offer multi OS supported, TV tuner, the Internet, and IoT connectivity services.



Smart Healthcare Solution

As healthcare needs continue to rise, hospitals are striving to improve patient care and utilize the latest innovation in medical equipment. Avalue keeps on developing the smart healthcare solutions and focuses on working with solutions partners.

Avalue offers a variety of innovative solutions to meet the unique demands of a healthcare facility.



Exam Room Solution

Avalue's Exam Room Solution has Medical Display, Workstation, Nursing Cart and the Room Status Display.

The Room Status Display shows the occupied state & worklist queue that can help patients aware the sequence. Moreover, it has PCAP multi-touch screen controls and can display the working list with 3 different colors of LED lights.

The Medical Workstation shows the patient's information and their reports immediately. It helps doctors control the exam process effectively.



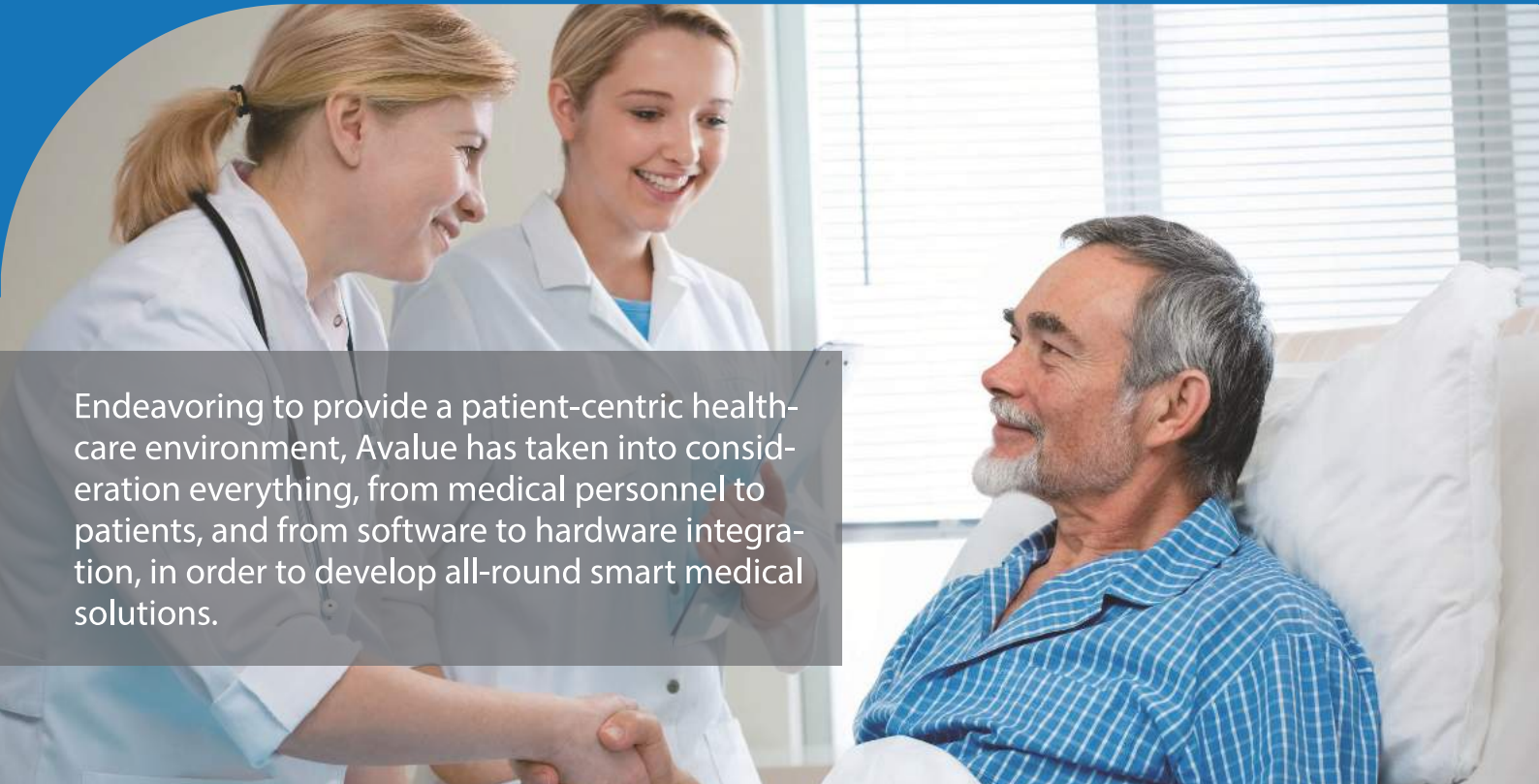
Real-time Positioning RTLS (Real-Time Location System)

Indoor Real Time Location System (RTLS) is a technology that is used to automatically identify and locate objects, assets or individuals in real time. Avalue industrial grade RTLS solutions capture real-time data from targets want to be monitored and turn them into actionable insights.

Avalue provides comprehensive Smart Healthcare Solutions

that best meet medical, health and healthcare needs.

A New Digital Healthcare Experience You Can Trust



Endeavoring to provide a patient-centric healthcare environment, Avalue has taken into consideration everything, from medical personnel to patients, and from software to hardware integration, in order to develop all-round smart medical solutions.

Smart Ward

The patient-based service promotes patient's in-patient experience and assists medical staff in offering all-round care

Nursing Station

Share data and streamline processes: Workflow Optimizations for paramedic to concentrate on nursing

Operating Room

Medical Arm is easily maneuverable to provide the user with the most comfortable position when using the touch screen interface of the terminal.

Exam Room

The "medical regulation certified" panel provides clearer images that greatly improves diagnosis precision.

Registration

Smart Guidance for Queue Distribution
Easy and Convenience for Waiting Time Reduction

Outpatient Clinic

Sections of the clinic room
Real-time information system

Pharmacy

Connects with HIS or hospital system that offers healthcare professionals more accurate use of drugs. The applications include order entry, patient profiles, and preparation of unit dose cart fill lists.

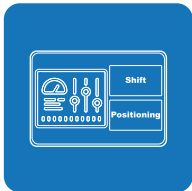
Health Station & Rehabilitation

Health Station provides patients the great environment to control their health and obtain the real-time data of blood pressure test, blood sugar levels, and so on. All of the records are uploaded to the health cloud.



Smart Nursing Station Solution

- Improving resource management
- Reducing medical staff workload



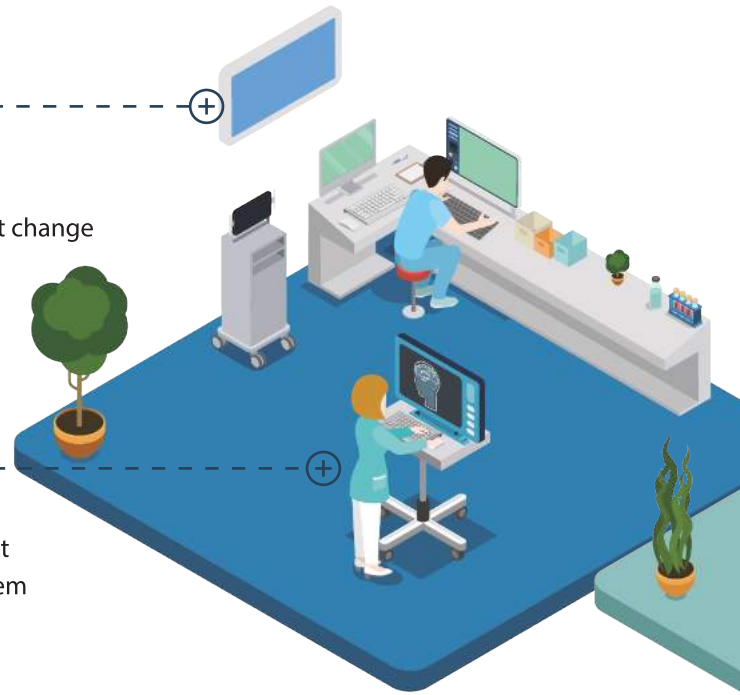
RTLS Indoor Location and Info Integration Platform

- Monitor patients' position is simple and clear
- Catch up with assets and information at each shift change
- Staff safety and protection. Get automated and location-aware alerts

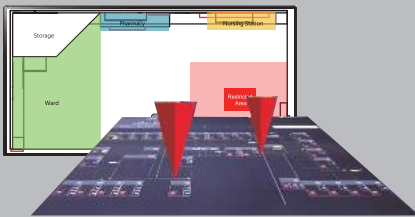


Mobile and Powering Up Workstation

- Wireless, cordless medical grade panel PC and cart
- Connect to public/private cloud information system
- Easy to clean and infection control friendly



Application Product



Info Integration Platform
White Board Solution

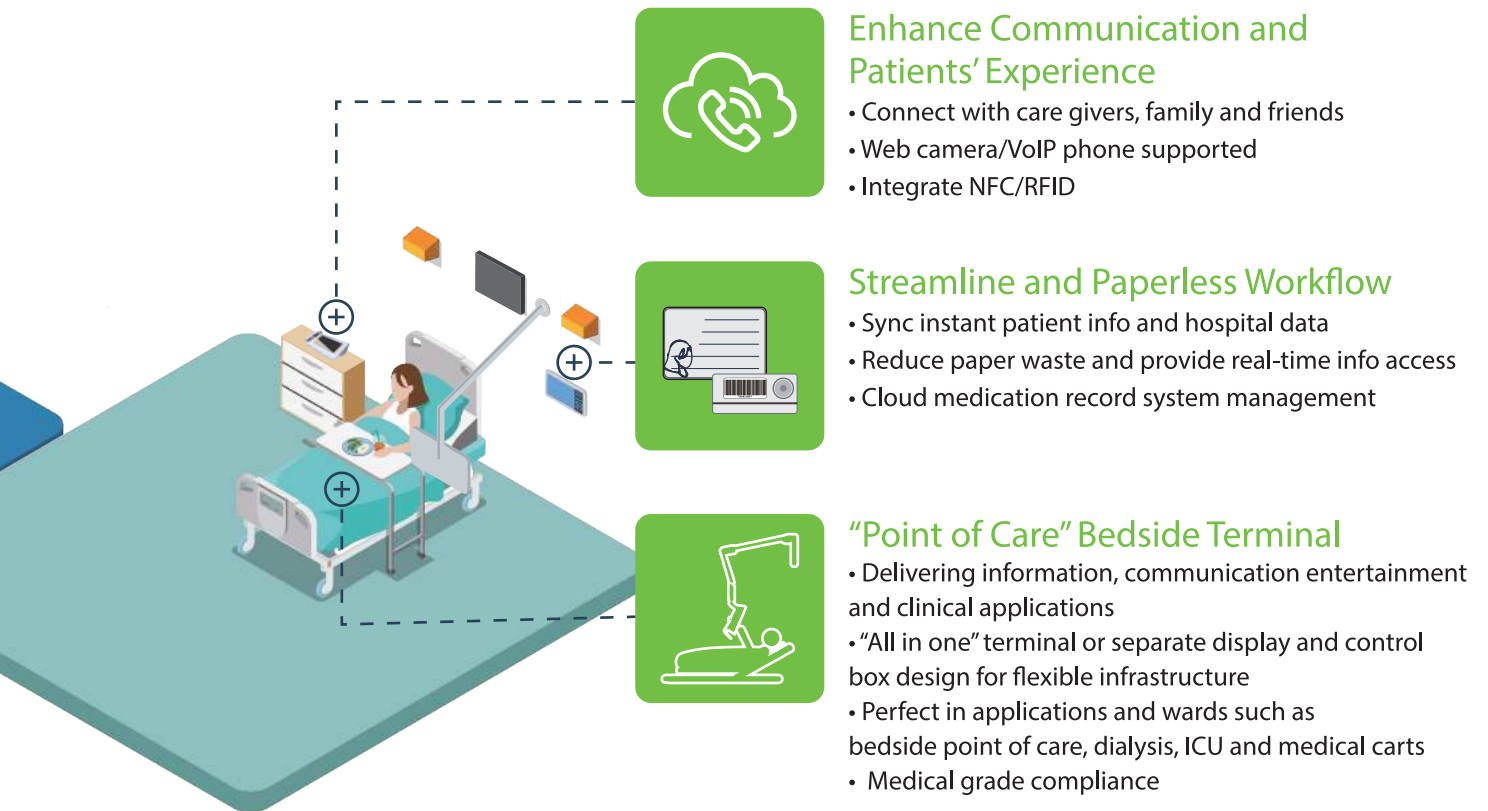


Mobile Workstation Solution
Geni-Cart and GeniTec Charger



Smart Ward Solution

- Enhance patients' experience
- Close connection with care providers and patients



Digital Phone
RiPAC-10P1-H



Bedside Card
EBC-05M1



Room Status Display
VNS-10W01



Bedside Terminal
Medi-View



RiPAC-10P1

Patient Check-in Kiosk

RiPAC-10P1 combines two displays: a full flat 10.1" and an adjustable 5" touchscreen. Also integrated into the system is a built-in thermal printer with auto cut functionality.



OFT Series

Real-time Information System/ Health Center Display

Designed with 802.11 b/g/n Wi-Fi and 10/100/1000 Ethernet, allowing stable and rapid Internet connection for data transactions. Also, supports Bluetooth 4.0 technology for shorter distance communications.



HID-2132

Medical Workstation/ Pharmacy Computer

With UL-60601-1 4th edition medical certificate and an anti-microbial finish, HID-2132 is ready for medical environment. It supports Full HD and P-CAP multi-touch up to 10 points, giving users an extraordinary visual and touch control experience.



Goomedi Series

Medical Display

This series of Goomedi's Medical Displays include many flexible visualization options such as switching to multiple monitors in full screen, picture-in-picture, picture-by-picture or in multi-split.



VNS-10W01

Room Status Display

HID Healthcare Intelligent Display has P-CAP touch screen, compliant IP65 front side and 10.1"/15.6" LED backlight LCD. Also, it can display the working list with 3 different colors of LED lights.



EBC-05M1

Digital Bedside Card

E Ink can present the patient's information status and hospital data immediately. Also, it reduces paper waste and support general/ emergency status with different color & light.



RiPAC-10P1-H

w/camera & VoIP Phone

Nursing Station Digital Phone

With 10 points projective capacitive multi-touch, and 5" adjustable customer LCD display. It supports VoIP phone and camera. Moreover, it integrates NFC compliant with RFID/ Felica.



Geni-Cart

Mobile Workstation

The Geni-Cart adjusts in height for each user. It has a smooth handle for confident maneuverability and high durability castors which brake quickly. The medical carts can provide a wireless solution, charged in situ or with a power docking system for its Hot Swappable modules.



Medi-View

Medical Arms

(OR) The Arm for OR has height adjustable 20° to -60° from horizontal, integrated cable covers for easy cable installation. (Bedside) Arch-Swing offers a long reach, perfect balance and maximum vertical and horizontal movement. The Arms can be integrated with the I-Hub wall box or ceiling/floor mounts and can be easily parked away from the patient when not in use.



Headquarters

Avalue Technology

7F, 228, Lian-cheng Road, Zhonghe Dist.,
New Taipei City 235, Taiwan
Tel: +886-2-8226-2345
Fax: +886-2-8226-2777
E-mail: sales@avalue.com.tw
Web: www.avalue.com.tw

Avalue USA

Avalue Technology

9 Timber Lane, Marlboro, NJ 07746
Tel: +1-732-414-6500
Fax: +1-732-414-6501
E-mail: sales@avalue-usa.com

Avalue China (Shanghai)

Avalue Technology

F3, Building 57, No.461 Hong Cao Road,
Shanghai, China
Tel: +86-21-5169-3609
Fax: +86-21-5445-3266
E-mail: sales.china@avalue.com.cn

Avalue USA

BCM Advanced Research

11 Chrysler, Irvine, CA 92618 USA
Tel: +1-949-470-1888
Fax: +1-949-470-0971
E-mail: BCMSales@bcmcom.com
Web: www.bcmcom.com

Avalue Japan

Avalue Japan Inc.

3F Ishiyama-Bldg, 1-6-1 Taito,
Taito-ku, Tokyo 110-0016 Japan
Tel: +81-3-5807-2321
Fax: +81-3-5807-2322
E-mail: sales.japan@avalue.co.jp

Avalue Netherlands

Avalue European Service Centre (AESC)

De Trompet 2108, 1967 DC Heemskerk,
The Netherlands
Tel: +31-251-7002-87
E-mail: eu_rma_service@avalue.com.tw



All specifications are subjects to change without notification.
All brand names and registered trademarks referred to in this catalog are the property of their respective companies.
Copyright © Avalue Technology Inc. 2019-2020

MPKT-20200102
2020 Ver.1.0