



FAQ / Application Note

Subject: Intel SATA RAID SOP	
FAQ Document No: S21019	Date: 2021/12/28
Model Name: HPM series	Rev.: A1..
Category: <input type="checkbox"/> General <input type="checkbox"/> H/W <input checked="" type="checkbox"/> S/W <input type="checkbox"/> Others, <u>寫小分類</u>	
Purpose: Know how to setup intel SATA RAID	

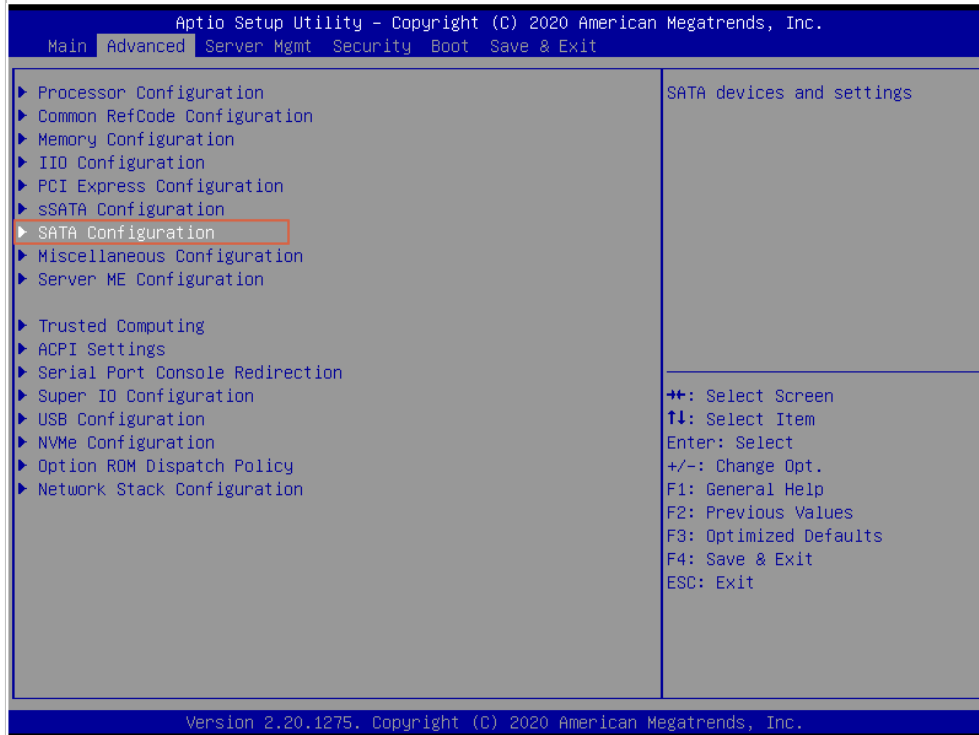
Note: Intel VROC SATA RAID is only available when the system is configured for UEFI boot mode.

To set RAID configuration, please follow the instructions below.

Set RAID 1 (DATA Mirroring)

Step 1:

- Enter SATA Configuration. If you install HDD in SSATA1 or SSATA2, go to sSATA Configuration.



- Select "SATA Mode options" as "RAID"

Avalue Technology Inc.

7F, 228, Lian-cheng Road, Zhonghe Dist., New Taipei City 235, Taiwan

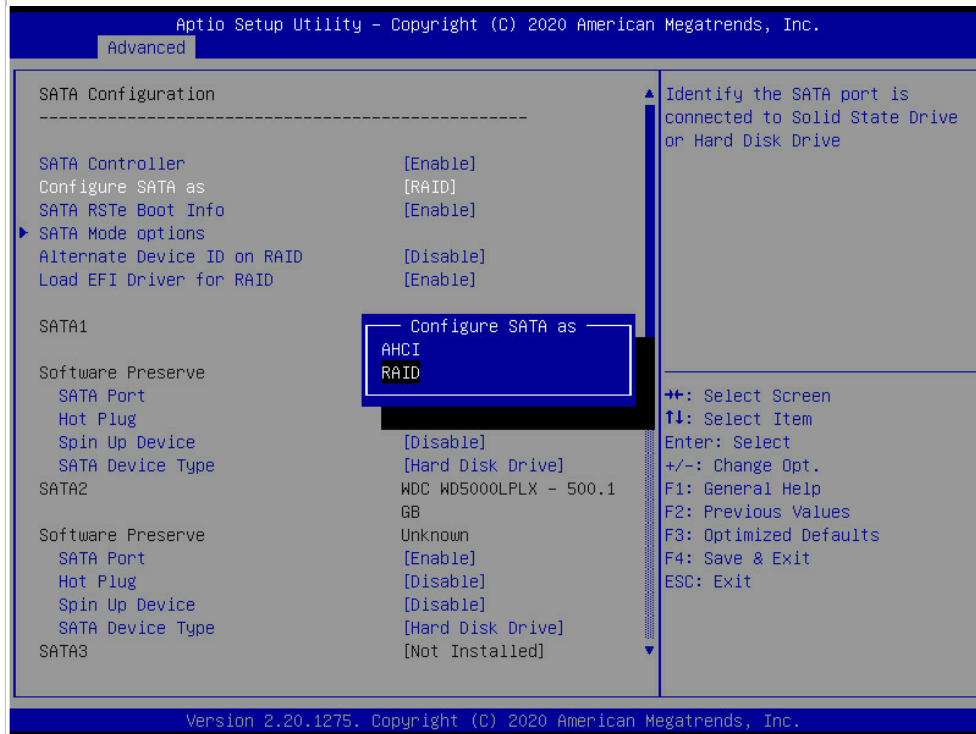
www.avalue.com.tw
sales@avalue.com.tw
Tel: +886-2-8226-2345
Fax: +886-2-8226-2777

Avalue USA
sales@avalue-usa.com
Tel: +732-414-6500
Fax: +732-414-6501

Avalue Japan
sales.japan@avalue.co.jp
Tel: +81-3-5807-2321
Fax: +81-3-5807-2322

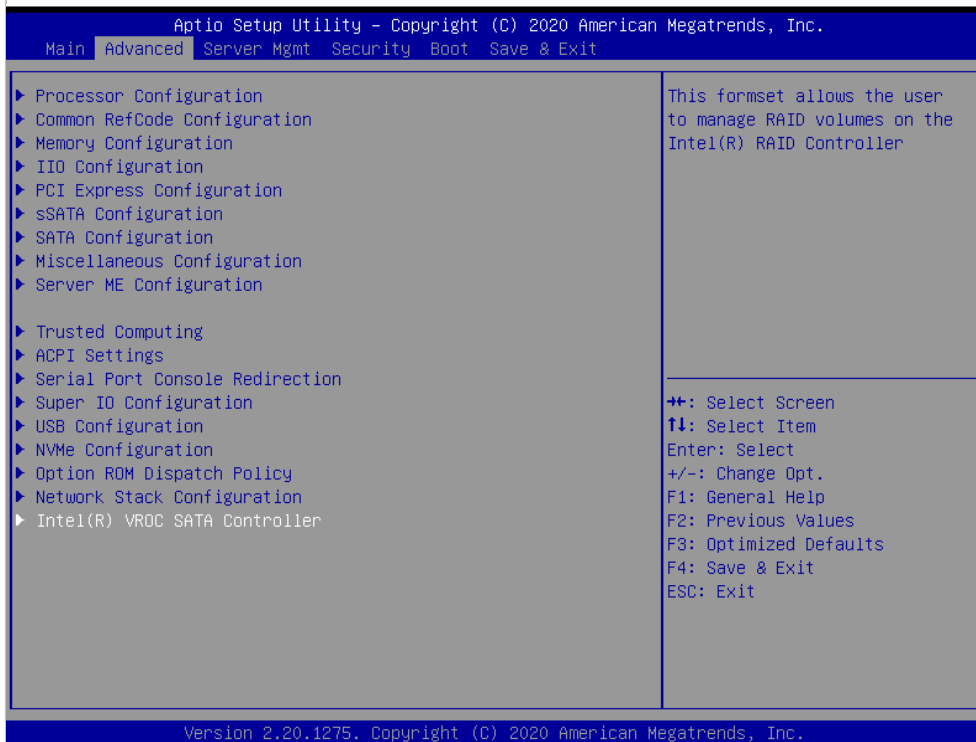
Avalue China
sales.china@avalue.com.cn
Tel: +86-21-5169-3609
Fax: +86-21-5445-3266

Avalue European Service Centre
eu_rma_service@avalue.com.tw
Tel: +31-251-7002-87



- Press "F4" to Save and Reset system

Step 2: Enter "Intel® VROC SATA Controller"



Avalue Technology Inc.

7F, 228, Lian-cheng Road, Zhonghe Dist., New Taipei City 235, Taiwan

www.avalue.com.tw
 sales@avalue.com.tw
 Tel: +886-2-8226-2345
 Fax: +886-2-8226-2777

Avalue USA
 sales@avalue-usa.com
 Tel: +732-414-6500
 Fax: +732-414-6501

Avalue Japan
 sales.japan@avalue.co.jp
 Tel: +81-3-5807-2321
 Fax: +81-3-5807-2322

Avalue China
 sales.china@avalue.com.cn
 Tel: +86-21-5169-3609
 Fax: +86-21-5445-3266

Avalue European Service Centre
 eu_rma_service@avalue.com.tw
 Tel: +31-251-7002-87

www.avalue.com.tw



Step 3: Enter "Create RAID Volume"

Aptio Setup Utility - Copyright (C) 2020 American Megatrends, Inc.

Advanced

Intel(R) VR0C 6.0.0.1024 SATA Driver

► Create RAID Volume

Non-RAID Physical Disks:

- Port 0, TOSHIBA MQ01ABD100 SN:Y2FSP0A8T, 931.51GB
- Port 1, WDC WD5000LPLX-08ZNTT0 SN:WD-WXJ1AB5151TT, 465.76GB

This page allows you to create a RAID volume

++: Select Screen
↑↓: Select Item
Enter: Select
+/-: Change Opt.
F1: General Help
F2: Previous Values
F3: Optimized Defaults
F4: Save & Exit
ESC: Exit

Version 2.20.1275. Copyright (C) 2020 American Megatrends, Inc.

Avalue Technology Inc.

7F, 228, Lian-cheng Road, Zhonghe Dist., New Taipei City 235, Taiwan

www.avalue.com.tw
sales@avalue.com.tw
Tel: +886-2-8226-2345
Fax: +886-2-8226-2777

Avalue USA
sales@avalue-usa.com
Tel: +732-414-6500
Fax: +732-414-6501

Avalue Japan
sales.japan@avalue.co.jp
Tel: +81-3-5807-2321
Fax: +81-3-5807-2322

Avalue China
sales.china@avalue.com.cn
Tel: +86-21-5169-3609
Fax: +86-21-5445-3266

Avalue European Service Centre
eu_rma_service@avalue.com.tw
Tel: +31-251-7002-87



Step 4:

- Enter "Name" as "name of RAID"
- Set "RAID Level" as "RAID1"
- Select Disks "Port 0" and "Port 1"
- Select "Capacity"
- Enter "Create Volume"

Aptio Setup Utility - Copyright (C) 2020 American Megatrends, Inc.

Advanced

<p>Create RAID Volume</p> <p>Name: Volume0 RAID Level: [RAID1(Mirror)]</p> <p>Select Disks:</p> <p>Port 0, TOSHIBA MQ01ABD100 [X] SN:Y2FSP0A8T, 931.51GB</p> <p>Port 1, WDC WD5000LPLX-082NTT0 [X] SN:WD-WXJ1AB5151TT, 465.76GB</p> <p>Capacity (GB): 442.46</p> <p>▶ Create Volume</p>	<p>Create a volume with the settings specified above</p> <hr/> <p> ++: Select Screen ↑↓: Select Item Enter: Select +/-: Change Opt. F1: General Help F2: Previous Values F3: Optimized Defaults F4: Save & Exit ESC: Exit </p>
---	--

Version 2.20.1275. Copyright (C) 2020 American Megatrends, Inc.

Avalue Technology Inc.

7F, 228, Lian-cheng Road, Zhonghe Dist., New Taipei City 235, Taiwan

www.avalue.com.tw
sales@avalue.com.tw
Tel: +886-2-8226-2345
Fax: +886-2-8226-2777

Avalue USA
sales@avalue-usa.com
Tel: +732-414-6500
Fax: +732-414-6501

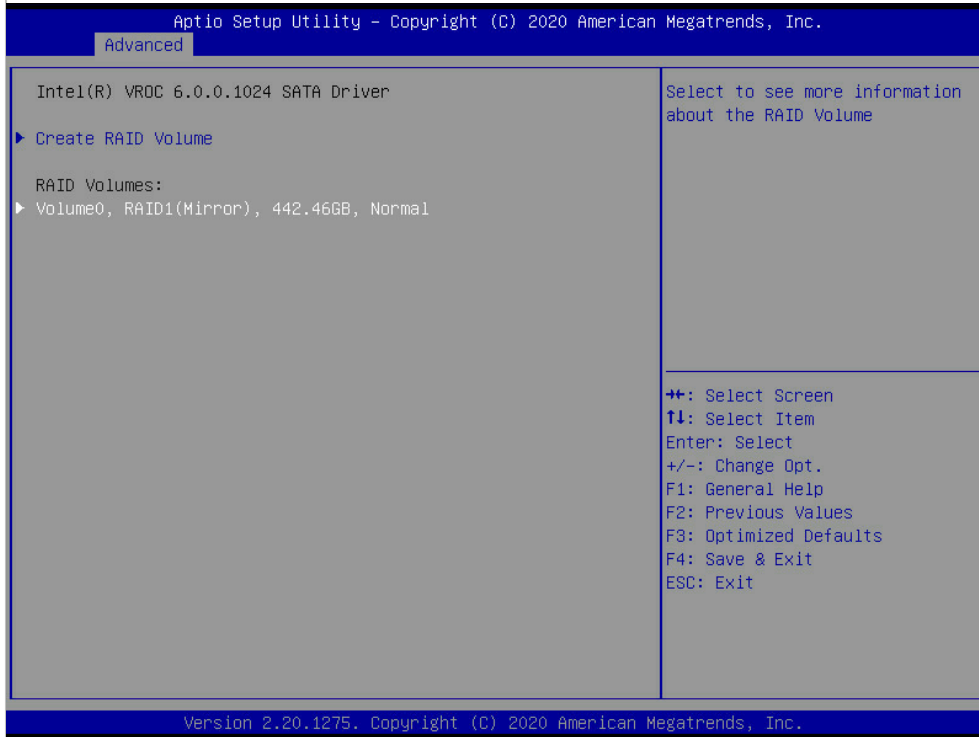
Avalue Japan
sales.japan@avalue.co.jp
Tel: +81-3-5807-2321
Fax: +81-3-5807-2322

Avalue China
sales.china@avalue.com.cn
Tel: +86-21-5169-3609
Fax: +86-21-5445-3266

Avalue European Service Centre
eu_rma_service@avalue.com.tw
Tel: +31-251-7002-87



Step 5: RAID1 has been created. Select "Volume0" to check details.



Step 6: This page shows the RAID information.



Avalue Technology Inc.

7F, 228, Lian-cheng Road, Zhonghe Dist., New Taipei City 235, Taiwan

www.avalue.com.tw
 sales@avalue.com.tw
 Tel: +886-2-8226-2345
 Fax: +886-2-8226-2777

Avalue USA
 sales@avalue-usa.com
 Tel: +732-414-6500
 Fax: +732-414-6501

Avalue Japan
 sales.japan@avalue.co.jp
 Tel: +81-3-5807-2321
 Fax: +81-3-5807-2322

Avalue China
 sales.china@avalue.com.cn
 Tel: +86-21-5169-3609
 Fax: +86-21-5445-3266

Avalue European Service Centre
 eu_rma_service@avalue.com.tw
 Tel: +31-251-7002-87

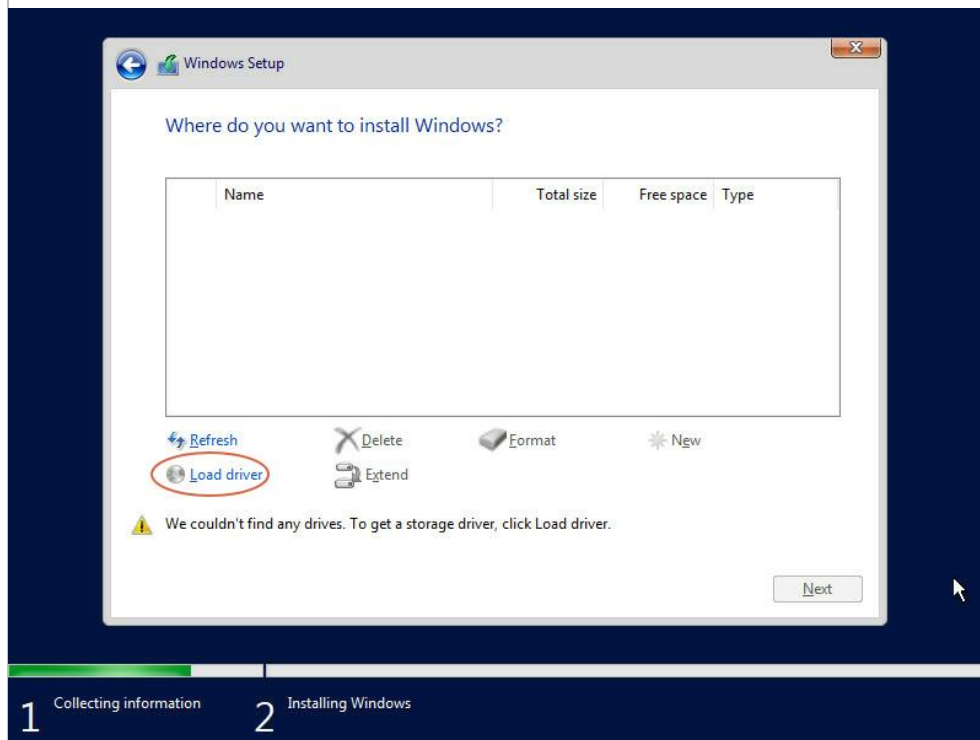
www.avalue.com.tw

Step 7: [Download intel RAID driver from avalue web site](#). Un-zip and put in USB drive.

Windows 10 64bit

No.	Release Date	Model	Description	Download
1	2020-11-04	HPM-621DE	Intel RAID Win10_64 Device:Other	
2	2020-11-04	HPM-621DE	Intel VROC win10_64 Device:Other	
3	2020-11-04	HPM-621DE	Intel Lan win10_64 Device:Gigabit_Ethernet	
4	2020-11-04	HPM-621DE	Aspeed VGA win10_64 Device:Video	
5	2020-11-04	HPM-621DE	Intel Chipset Win10_64_10.1.9.2 Device:Chipset	

Step 8: Load driver from your USB when you install Windows



- Select SATA RAID Controller.

Avalue Technology Inc.

7F, 228, Lian-cheng Road, Zhonghe Dist., New Taipei City 235, Taiwan

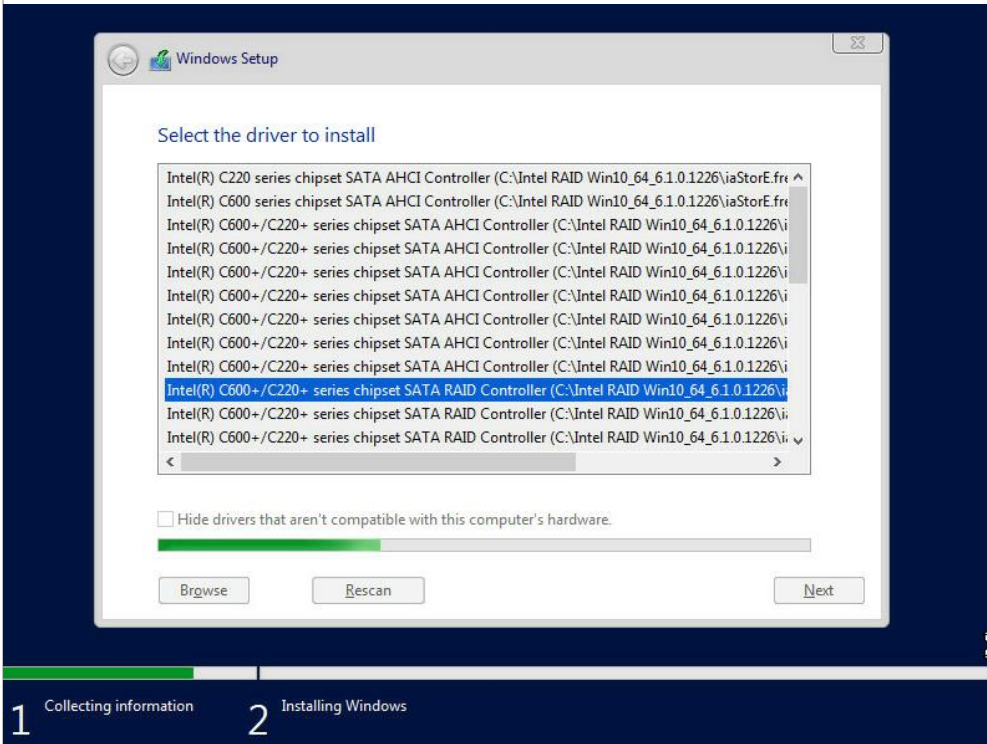
www.avalue.com.tw
sales@avalue.com.tw
Tel: +886-2-8226-2345
Fax: +886-2-8226-2777

Avalue USA
sales@avalue-usa.com
Tel: +732-414-6500
Fax: +732-414-6501

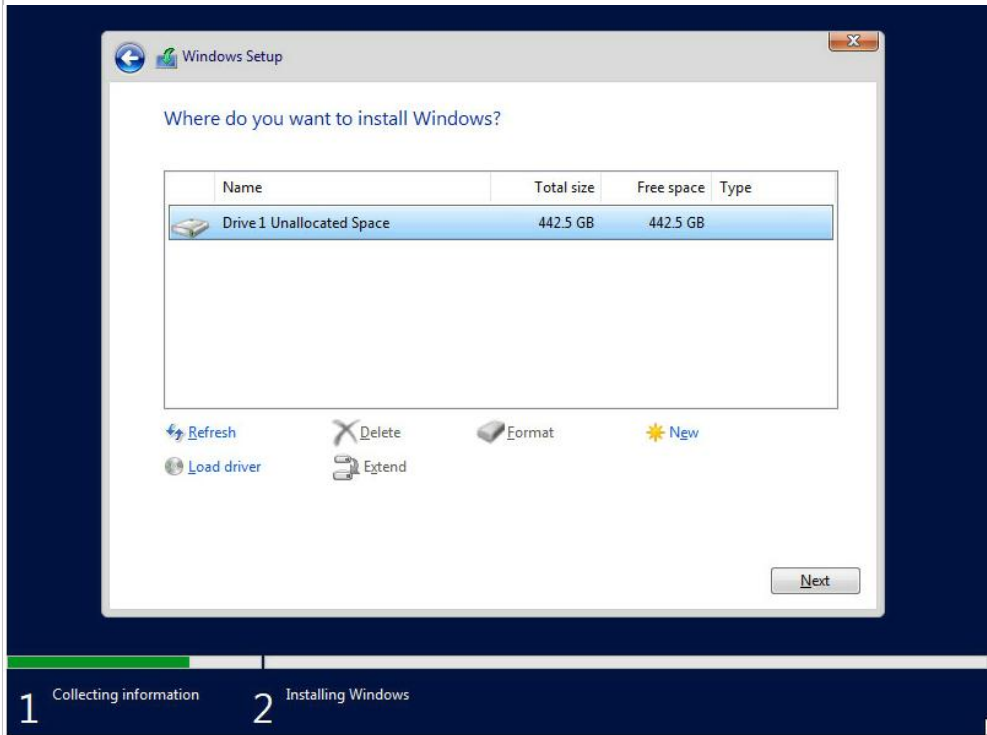
Avalue Japan
sales.japan@avalue.co.jp
Tel: +81-3-5807-2321
Fax: +81-3-5807-2322

Avalue China
sales.china@avalue.com.cn
Tel: +86-21-5169-3609
Fax: +86-21-5445-3266

Avalue European Service Centre
eu_rma_service@avalue.com.tw
Tel: +31-251-7002-87



- After the driver is installed. We now have hard drive appears to install Windows.



Avalue Technology Inc.

7F, 228, Lian-cheng Road, Zhonghe Dist., New Taipei City 235, Taiwan

www.avalue.com.tw
 sales@avalue.com.tw
 Tel: +886-2-8226-2345
 Fax: +886-2-8226-2777

Avalue USA
 sales@avalue-usa.com
 Tel: +732-414-6500
 Fax: +732-414-6501

Avalue Japan
 sales.japan@avalue.co.jp
 Tel: +81-3-5807-2321
 Fax: +81-3-5807-2322

Avalue China
 sales.china@avalue.com.cn
 Tel: +86-21-5169-3609
 Fax: +86-21-5445-3266

Avalue European Service Centre
 eu_rma_service@avalue.com.tw
 Tel: +31-251-7002-87