



## FAQ / Application Note

**Subject :** How to setting Wake ON LAN function for ECM-A50M

**FAQ Document No:** H13011

**Date:** 2012/04/23

**Model Name.** ECM-A50M, ERS-A50M, EPC-A50M, ASM-A50M

**Rev.** A1

**Category:** ☐ General ☒ H/W ☐ S/W ☐ Others, I/O interface

**Purpose:** To clarify how to setting and testing Wake ON LAN function for ECM-A50M.

Please setup test environment as below:

1. **Target device:** AMD A50M chipset board or system.

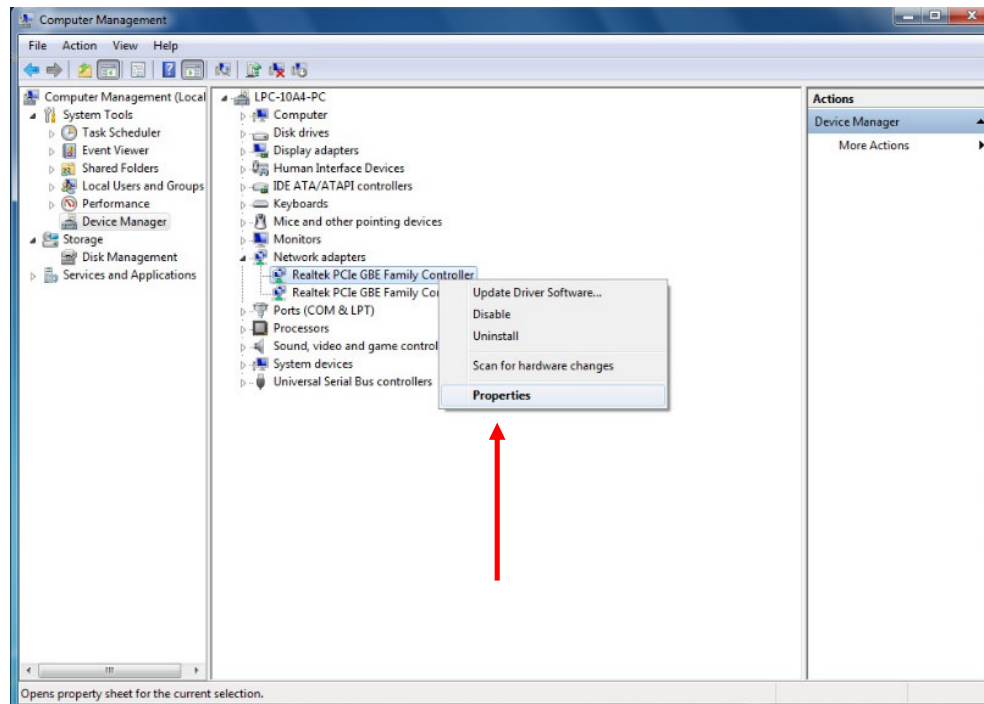
1-1 Setting OS: Windows 7 Professional SP1

1-2 LAN driver: Realtek RTL8111E v7.27.920.2010 for Windows 7

1-3 setting:

Open Device manager → Network adapters → Realtek PCIe GBE Family Controller

→ Properties → Advanced → Wake ON Magic Packet → Enable



**Avalue Technology Inc.**

7F, 228, Lian-Cheng Road, Chung Ho City, Taipei, Taiwan R.O.C.

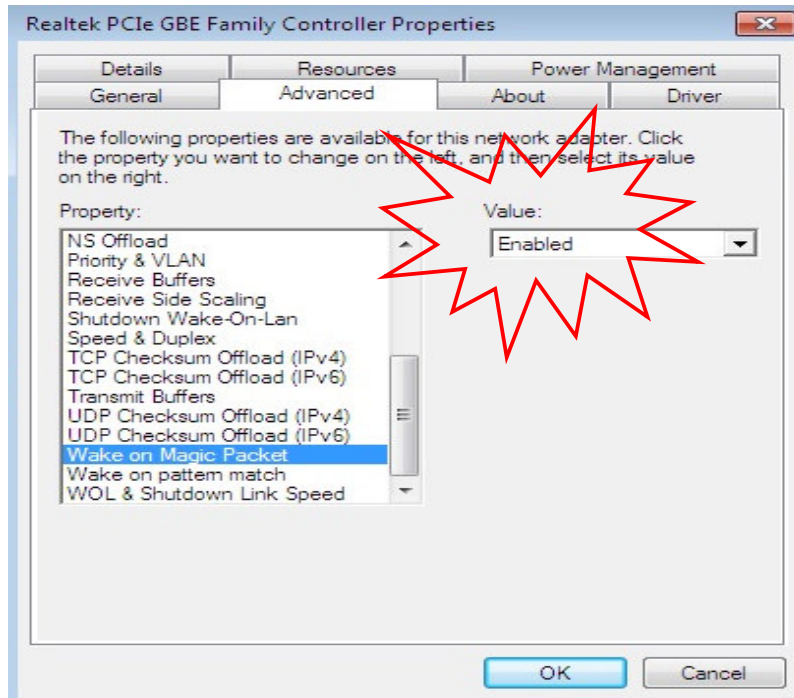
www.avalue.com.tw  
sales@avalue.com.tw  
Tel: +886-2-82262345  
Fax: +886-2-82262777

Avalue Europe  
sales.europe@avalue.com.tw  
Tel: +45-7025-0310  
Fax: +45-4975-5026

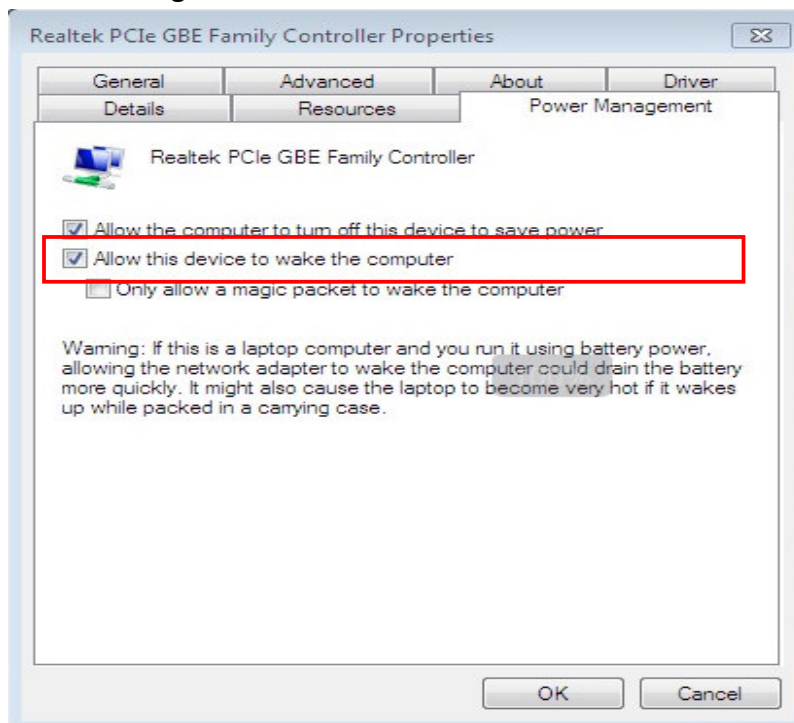
Avalue USA  
sales@avalue-usa.com  
Tel: +1-732-578-0200  
Fax: +1-732-578-0250

BCM Advanced Research  
BCMSales@bcmcom.com  
Tel: +1-949-470-1888  
Fax: +1-949-470-0971

Avalue China  
sales.china@avalue.com.cn  
Tel: +86-21-5426-3399  
Fax: +86-21-6495-0370



**Power Management→ Mark “Allow this device to wake the computer”**



#### Avalue Technology Inc.

www.avalue.com.tw  
sales@avalue.com.tw  
Tel:+886-2-82262345  
Fax:+886-2-82262777

Avalue Europe  
sales.europe@avalue.com.tw  
Tel: +45-7025-0310  
Fax: +45-4975-5026

Avalue USA  
sales@avalue-usa.com  
Tel: +1-732-578-0200  
Fax: +1-732-578-0250

BCM Advanced Research  
BCM5Sales@bcmcom.com  
Tel: +1-949-470-1888  
Fax: +1-949-470-0971

Avalue China  
sales.china@avalue.com.cn  
Tel: +86-21-5426-3399  
Fax: +86-21-6495-0370

7F, 228, Lian-Cheng Road, Chung Ho City, Taipei, Taiwan R.O.C.

#### 1-4 Get LAN1 Physical Address(as MAC address) from “Command Prompt”.

Key command: ipconfig /all

ex. Physical Address: 00-04-5F-92-43-82

```

C:\Users\ECM-A50M>ipconfig /all

Windows IP Configuration

Host Name . . . . . : ECM-A50M-PC
Primary Dns Suffix . . . . . :
Node Type . . . . . : Hybrid
IP Routing Enabled. . . . . : No
WINS Proxy Enabled. . . . . : No

Ethernet adapter Local Area Connection 2:

Media State . . . . . : Media disconnected
Connection-specific DNS Suffix . :
Description . . . . . : Realtek PCIe GBE Family Controller #2
Physical Address. . . . . : 00-04-5F-92-43-83
DHCP Enabled. . . . . : Yes
Autoconfiguration Enabled . . . . : Yes

Ethernet adapter Local Area Connection:

Connection-specific DNS Suffix . :
Description . . . . . : Realtek PCIe GBE Family Controller
Physical Address. . . . . : 00-04-5F-92-43-82
DHCP Enabled. . . . . : Yes
Autoconfiguration Enabled . . . . : Yes
Link-local IPv6 Address . . . . . : fe80::4ca0:d9ce:fdic:58f3%11(Preferred)
IPv4 Address. . . . . : 10.1.1.55(Preferred)
Subnet Mask . . . . . : 255.255.255.0
    
```

#### 1-5. Make sure Ethernet function working normally of LAN1.

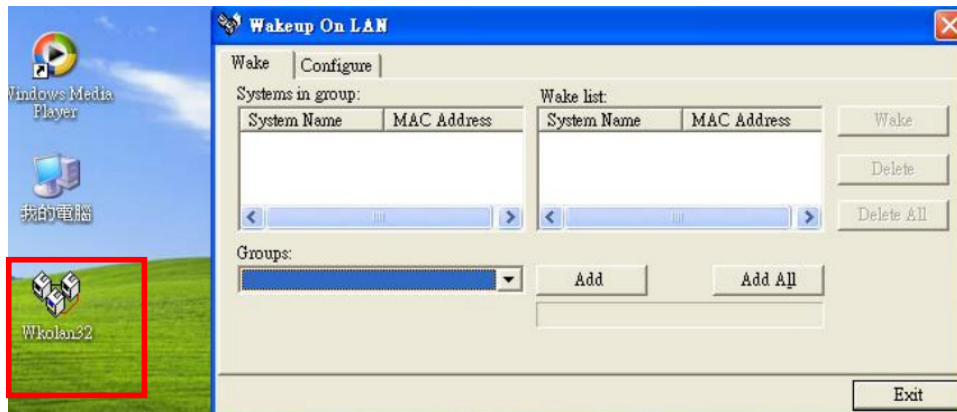
### 2. **Control Device:** EBM-945GSE board.

2-1 Setting OS: Windows XP Professional SP3

2-2 LAN driver: Realtek RTL8111C v.5.724.423.2009 for Windows XP.

2-3 Setting: Make sure Ethernet function working normally of LAN1.

2-4 Copy Wakeup On LAN tool: Wkolan32.exe to desktop.





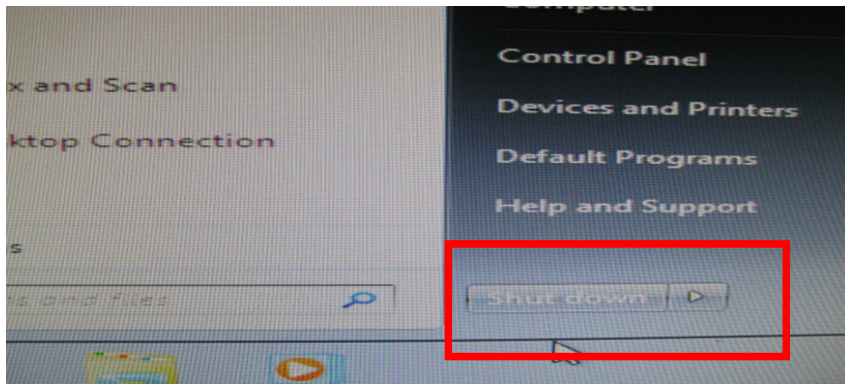
### 3. Test procedure:

3-1 Target device LAN1 and control device LAN1 are connected to same Network Hub.

3-2 Target device is ATX boot mode(it's need Press Power button)

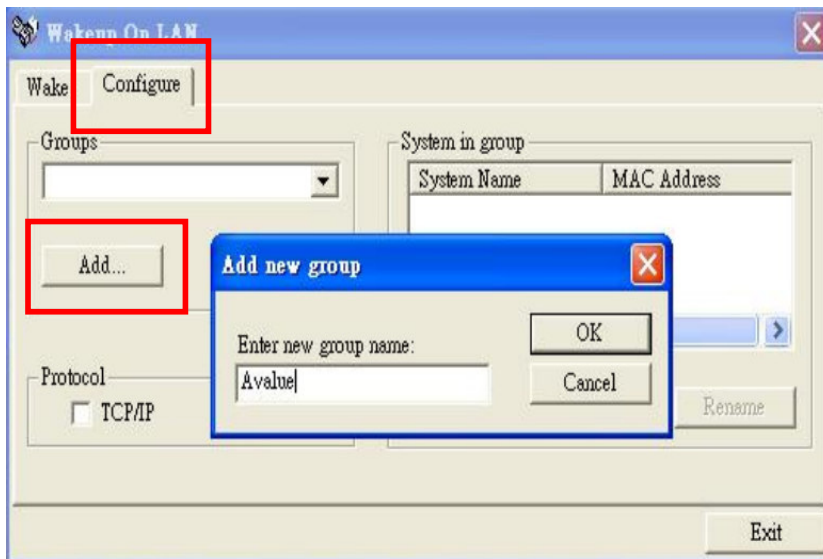
3-3 Power ON Target device into Widows 7

3-4 Select "Shut Down" Target device



3-5 Execute Wkolan32.exe tool in Control device.

Configure→ Add→ Add new group → Enter new group name( ex. Avalue)



#### Avalue Technology Inc.

www.avalue.com.tw  
sales@avalue.com.tw  
Tel:+886-2-82262345  
Fax:+886-2-82262777

Avalue Europe  
sales.europe@avalue.com.tw  
Tel: +45-7025-0310  
Fax: +45-4975-5026

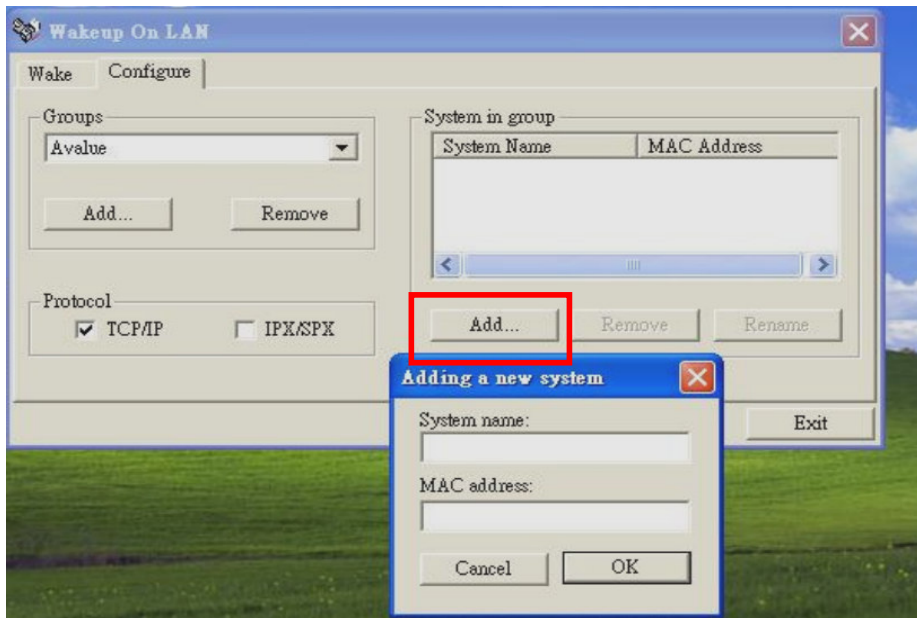
Avalue USA  
sales@avalue-usa.com  
Tel: +1-732-578-0200  
Fax: +1-732-578-0250

BCM Advanced Research  
BCMSales@bcmcom.com  
Tel: +1-949-470-1888  
Fax: +1-949-470-0971

Avalue China  
sales.china@avalue.com.cn  
Tel: +86-21-5426-3399  
Fax: +86-21-6495-0370

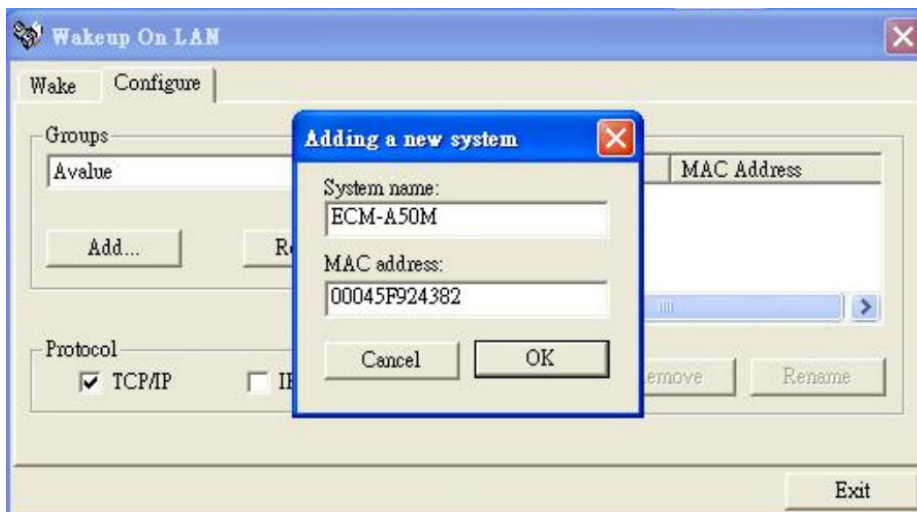
7F, 228, Lian-Cheng Road, Chung Ho City, Taipei, Taiwan R.O.C.

## Configure→ Add→ System in group



Type: System name: ECM-A50M, MAC Address: 00045F924382 (Target device information)

Click "OK" Button.



### Avalue Technology Inc.

www.avalue.com.tw  
sales@avalue.com.tw  
Tel: +886-2-82262345  
Fax: +886-2-82262777

Avalue Europe  
sales.europe@avalue.com.tw  
Tel: +45-7025-0310  
Fax: +45-4975-5026

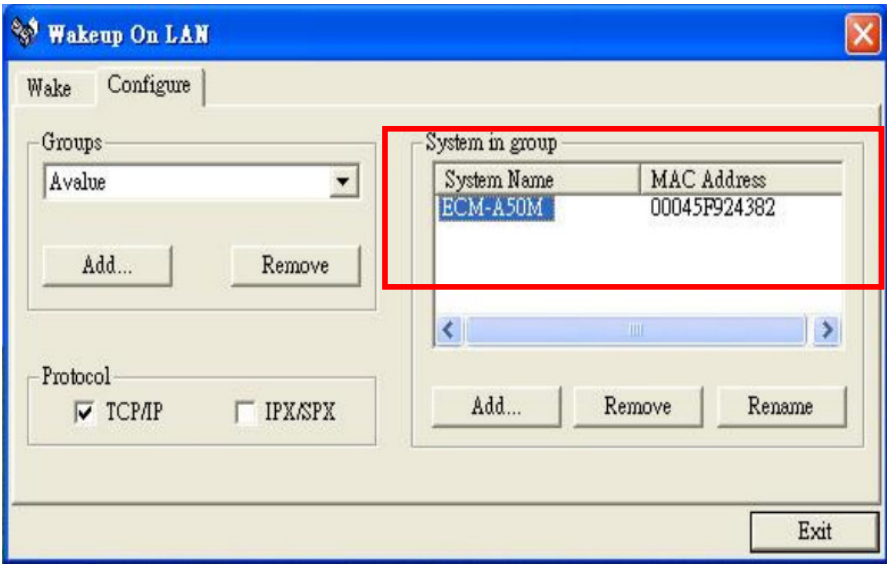
Avalue USA  
sales@avalue-usa.com  
Tel: +1-732-578-0200  
Fax: +1-732-578-0250

BCM Advanced Research  
BCMSales@bcmcom.com  
Tel: +1-949-470-1888  
Fax: +1-949-470-0971

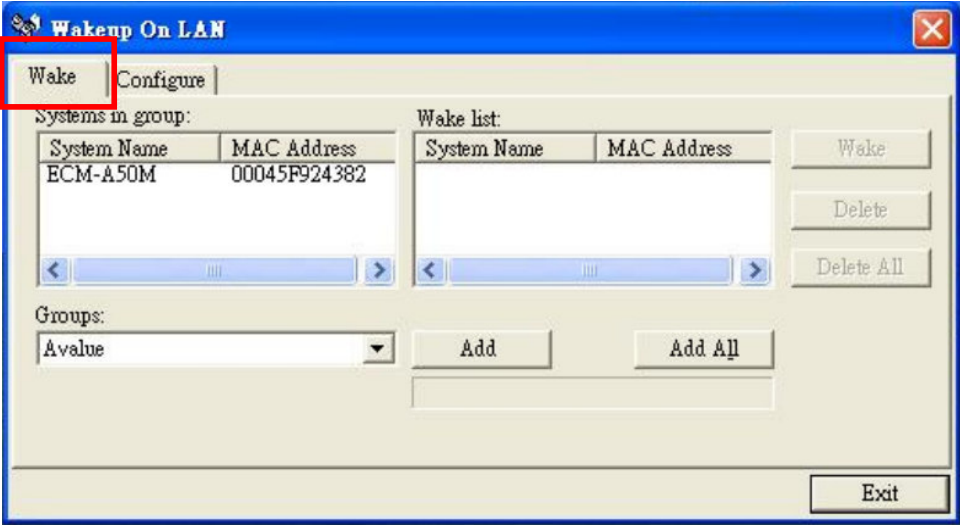
Avalue China  
sales.china@avalue.com.cn  
Tel: +86-21-5426-3399  
Fax: +86-21-6495-0370

7F, 228, Lian-Cheng Road, Chung Ho City, Taipei, Taiwan R.O.C.

You will see Group information as below:

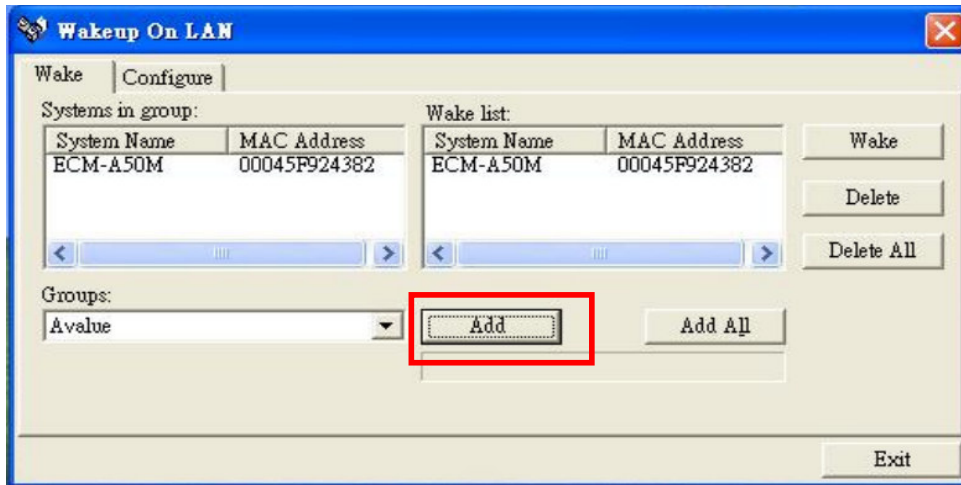


Click “Wake”, “System in group” has appeared target device information automatically.

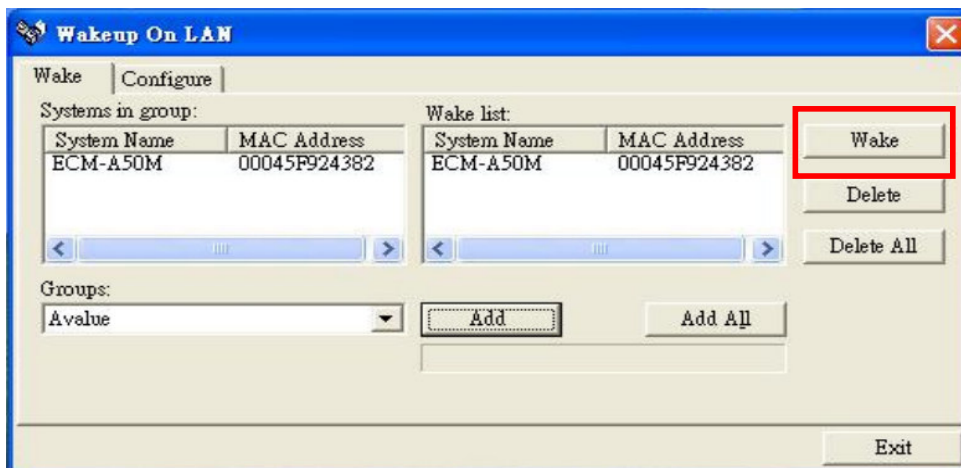




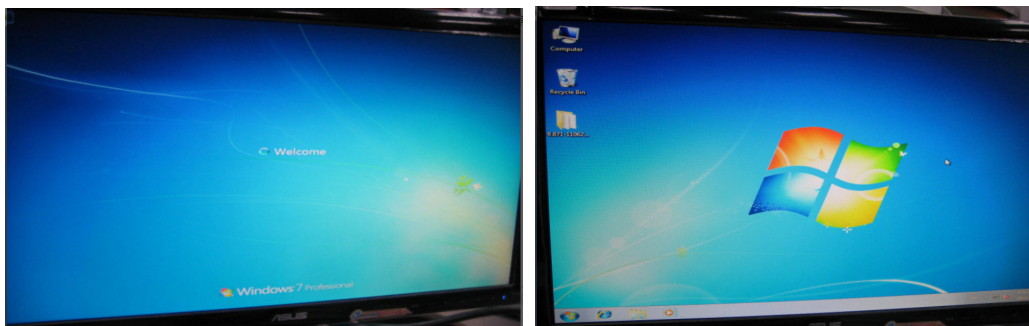
Select Wake list, Click “Add”



Click “Wake”



Target device (AMD A50M board) will be woken up by the control device (EBM-945GSE) successfully.



-END

#### Avalue Technology Inc.

www.avalue.com.tw  
sales@avalue.com.tw  
Tel: +886-2-82262345  
Fax: +886-2-82262777

Avalue Europe  
sales.europe@avalue.com.tw  
Tel: +45-7025-0310  
Fax: +45-4975-5026

Avalue USA  
sales@avalue-usa.com  
Tel: +1-732-578-0200  
Fax: +1-732-578-0250

BCM Advanced Research  
BCMSales@bcmcom.com  
Tel: +1-949-470-1888  
Fax: +1-949-470-0971

Avalue China  
sales.china@avalue.com.cn  
Tel: +86-21-5426-3399  
Fax: +86-21-6495-0370

7F, 228, Lian-Cheng Road, Chung Ho City, Taipei, Taiwan R.O.C.