

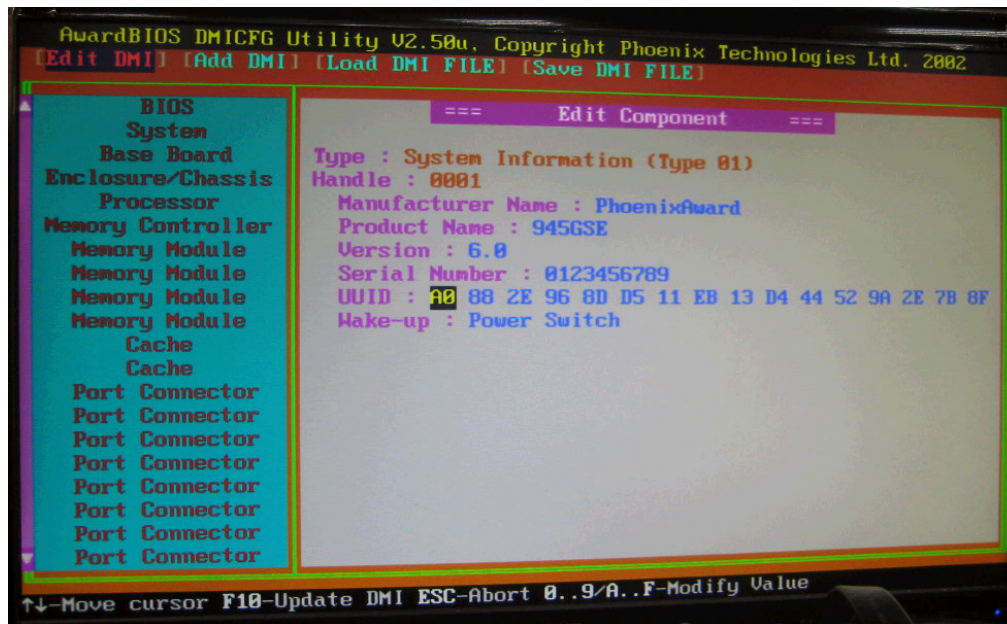
FAQ / Application Note

Subject : How to Read/Write system UUID	
FAQ Document No: : S12018	Date: 2012/10/05
Model Name. All	Rev. A1
Category: <input type="checkbox"/> General <input type="checkbox"/> H/W <input checked="" type="checkbox"/> S/W <input type="checkbox"/> Others, <u> BIOS </u>	
Purpose: To easy read/write UUID value in DOS mode	

What is UUID?

A Universally Unique Identifier (UUID) is an identifier standard used in software construction. A UUID is a 16-octet (128-bit) number. In its canonical form, a UUID is represented by 32 hexadecimal digits, displayed in five groups separated by hyphens, in the form 8-4-4-4-12 for a total of 36 characters (32 digits and four hyphens)
 For example: 550e8400-e29b-41d4-a716-446655440000

1. Please check your Mainboard BIOS is Award or AMI BIOS firstly.
2. If it's Award BIOS, please use tool: DMICFG.EXE
 - 2-1. Please run the tool in pure DOS mode.
 - 2-2. Into Award BIOS DMICFG utility



Avalue Technology Inc.

7F, 228, Lian-Cheng Road, Chung Ho City, Taipei, Taiwan R.O.C.

www.avalue.com.tw
 sales@avalue.com.tw
 Tel:+886-2-82262345
 Fax:+886-2-82262777

Avalue Europe
 sales.europe@avalue.com.tw
 Tel: +45-7025-0310
 Fax: +45-4975-5026

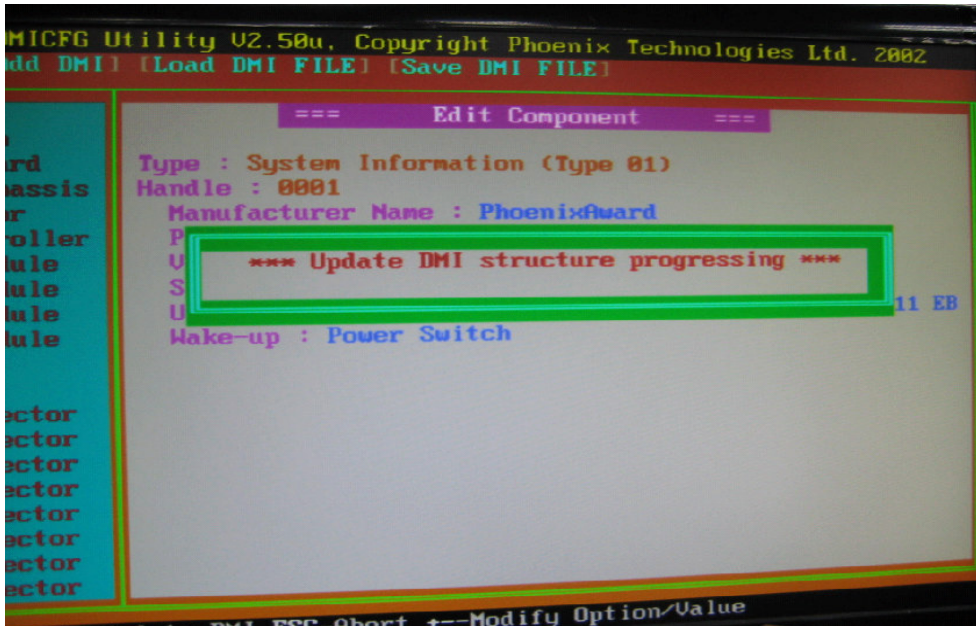
Avalue USA
 sales@avalue-usa.com
 Tel: +1-732-578-0200
 Fax: +1-732-578-0250

BCM Advanced Research
 BCM5ales@bcmcom.com
 Tel: +1-949-470-1888
 Fax: +1-949-470-0971

Avalue China
 sales.china@avalue.com.cn
 Tel: +86-21-5426-3399
 Fax: +86-21-6495-0370

2-3. Edit DMI→System→ Read or Modify UUID

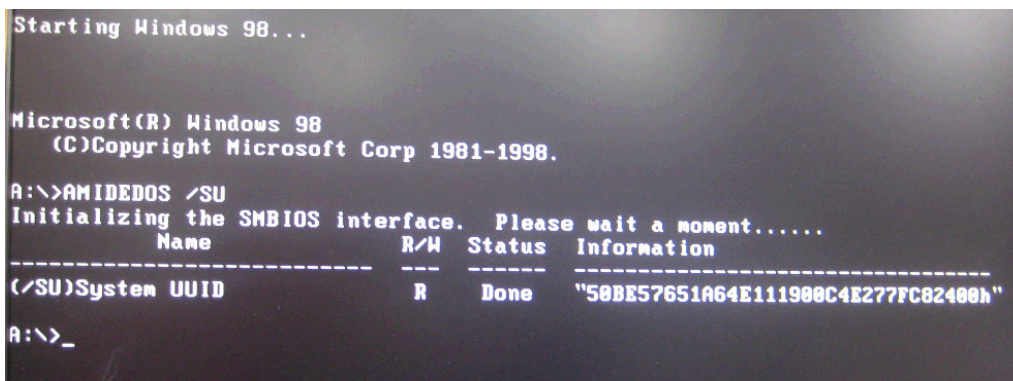
2-4. F10→ update DMI



3. If it's AMI BIOS, please use tool: AMIDEDOS.EXE

3-1. Please run the tool in pure DOS mode.

3-2. Read/Write mainboard UUID: AMIDEDOS /SU



3-3. Generate mainboard UUID and update automatically: AMIDEDOS /SU AUTO

```
Starting Windows 98...

Microsoft(R) Windows 98
(C)Copyright Microsoft Corp 1981-1998.

A:\>AMIDEDOS /SU AUTO
Initializing the SMBIOS interface. Please wait a moment.....
-----
Name           R/W  Status  Information
-----
(/SU)System UUID      W     Done   "F833ADAB1A64E111A3ADBFB8A21DE0700"
A:\>
```

If you want the tool, please contact with Avalue AE engineer.

-END