



Subject : If EMB-9670 supports Windows 7 or not

Model Name : EMB-9670

Rev : A2

Purpose :

The customer couldn't install Windows7 on EMB-9670 successfully, to describe how to install Windows7 on EMB-9670 according to the proper sequence.

Problem Description :

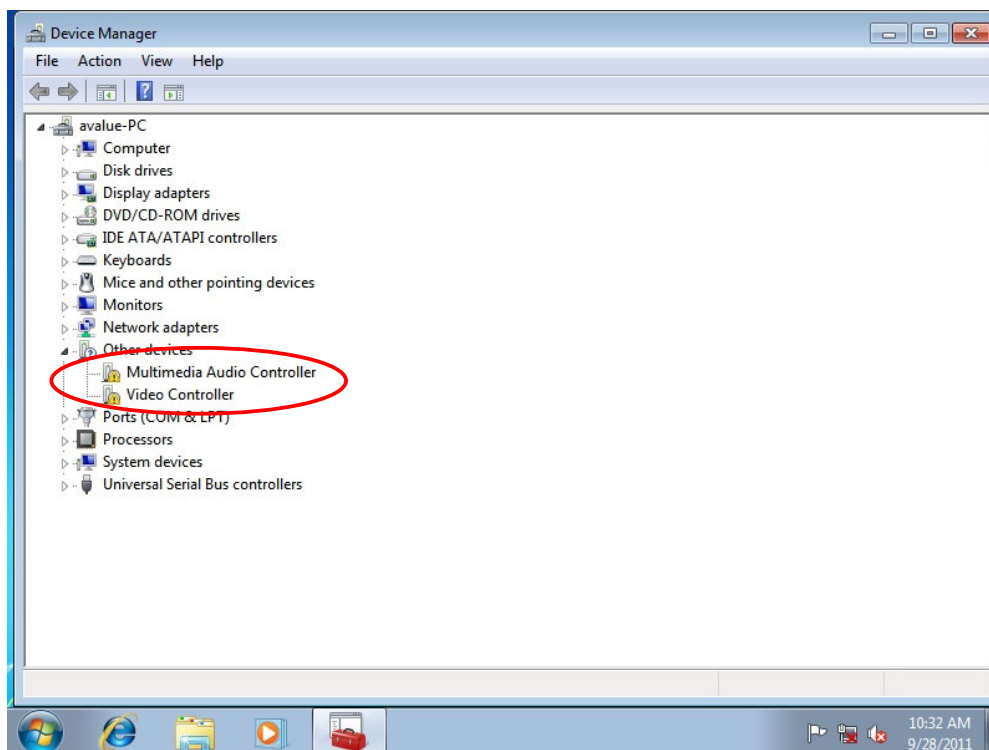
The customer couldn't install Windows7 on EMB-9670 successfully, because Windows7 does not seem to support Intel® RG82855GME chipset and VIA VT1616 audio chip.

Test Environment and condition :

1. EMB-9670 A2
2. Windows7 pro 32bit English
3. Intel® RG82855GME chipset driver - 855gm_vista_driver
4. VIA VT1616 audio chip driver - vinyl_v700b

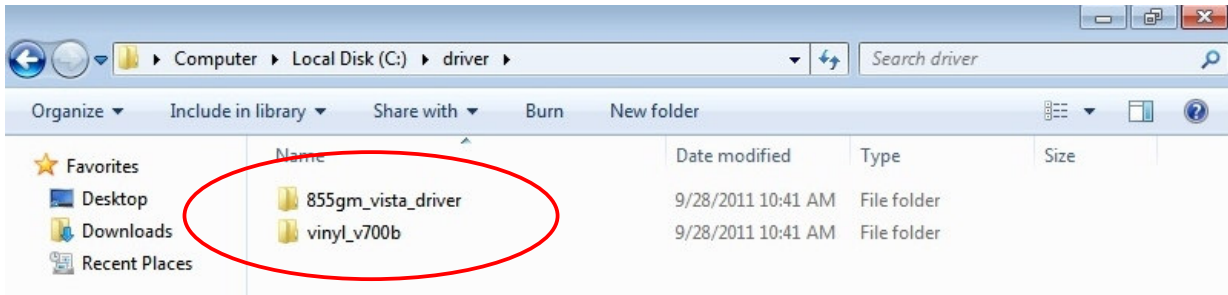
Test Procedure and Results:

1. After installing Windows7 32-bit on the EMB-9670, it should see two exclamation marks likes below. They are "Multimedia Audio Controller" and "Video Controller".

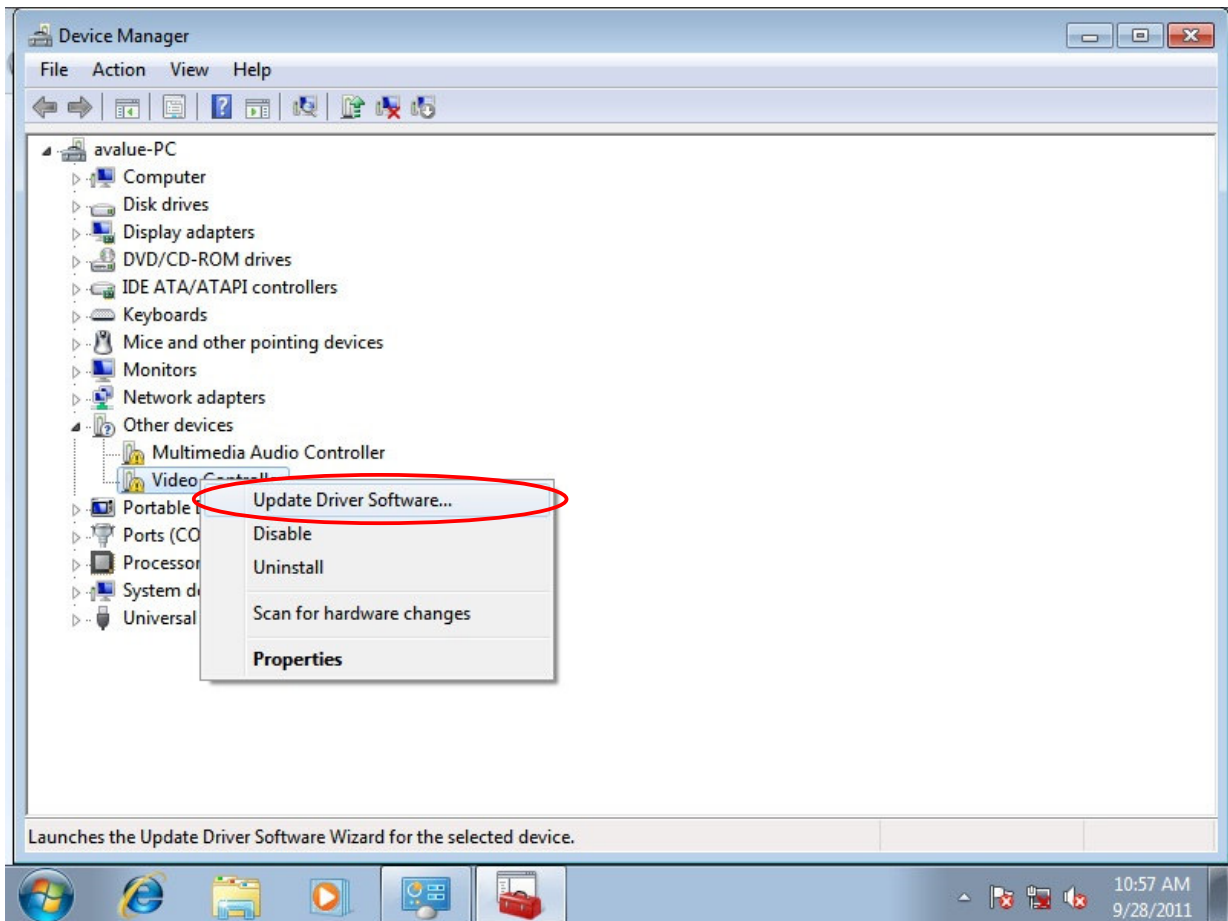




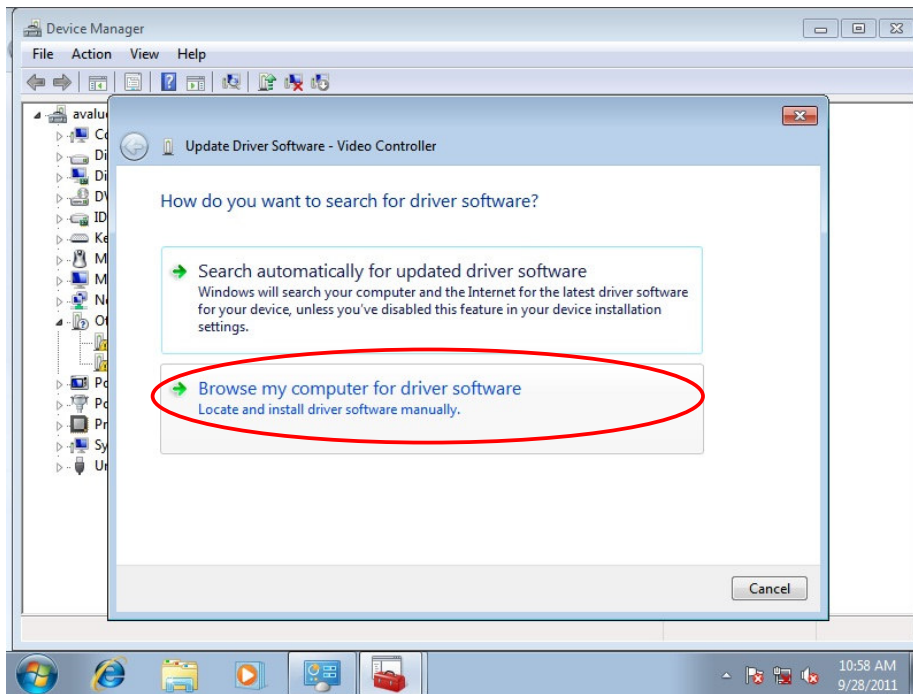
2.To prepare the drivers which are “855gm_vista_driver” and “vinyl_v700b” as below.



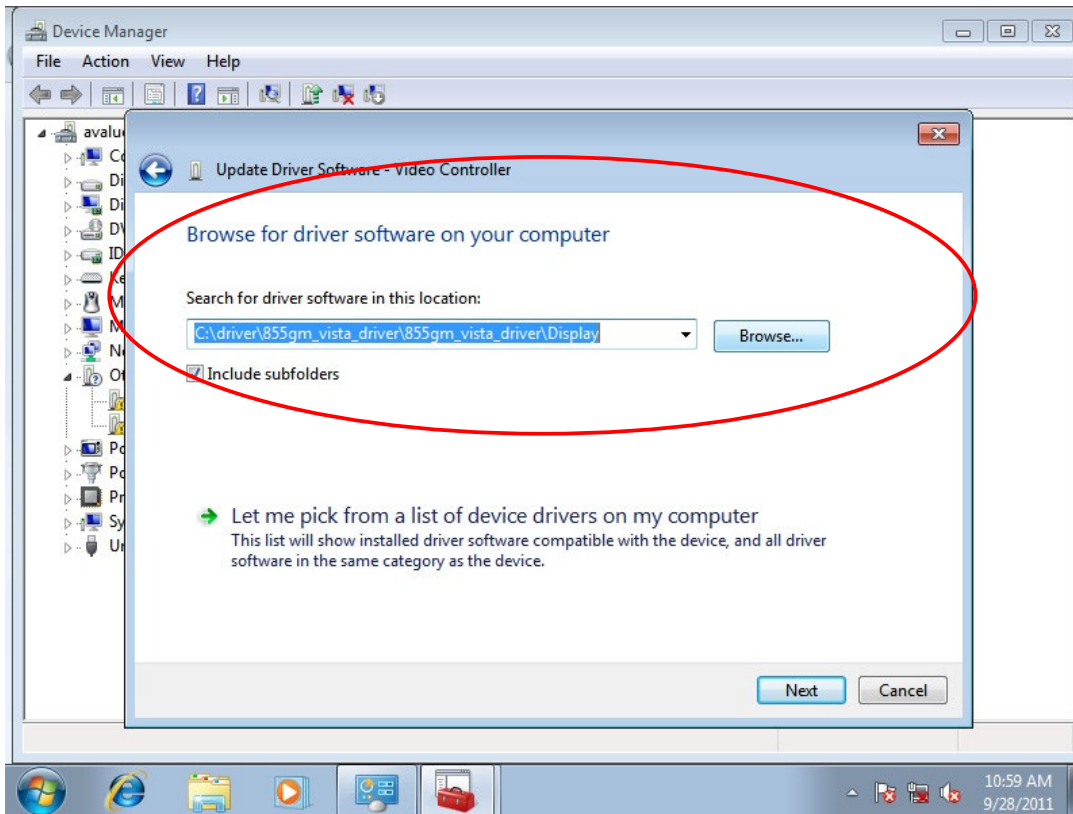
3.To open the Device Manager and to click the mouse right button on the “Video Controller”. Then to choose “Update Driver Software” ,



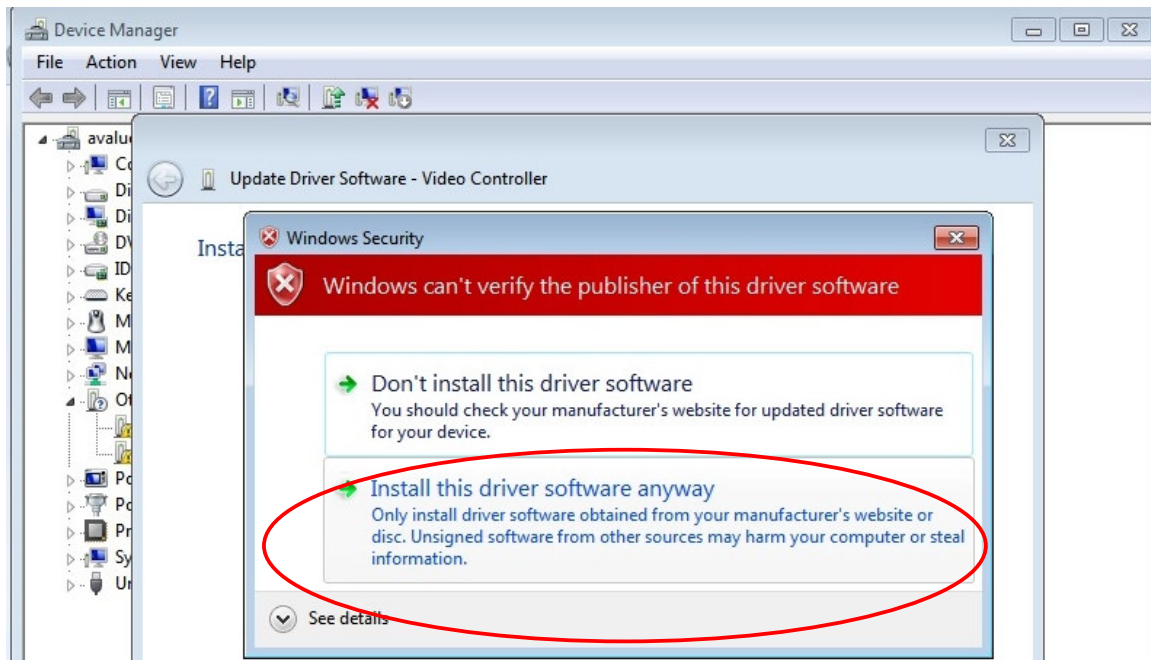
4. On the next screen, choosing the “Browse my computer for driver software”.



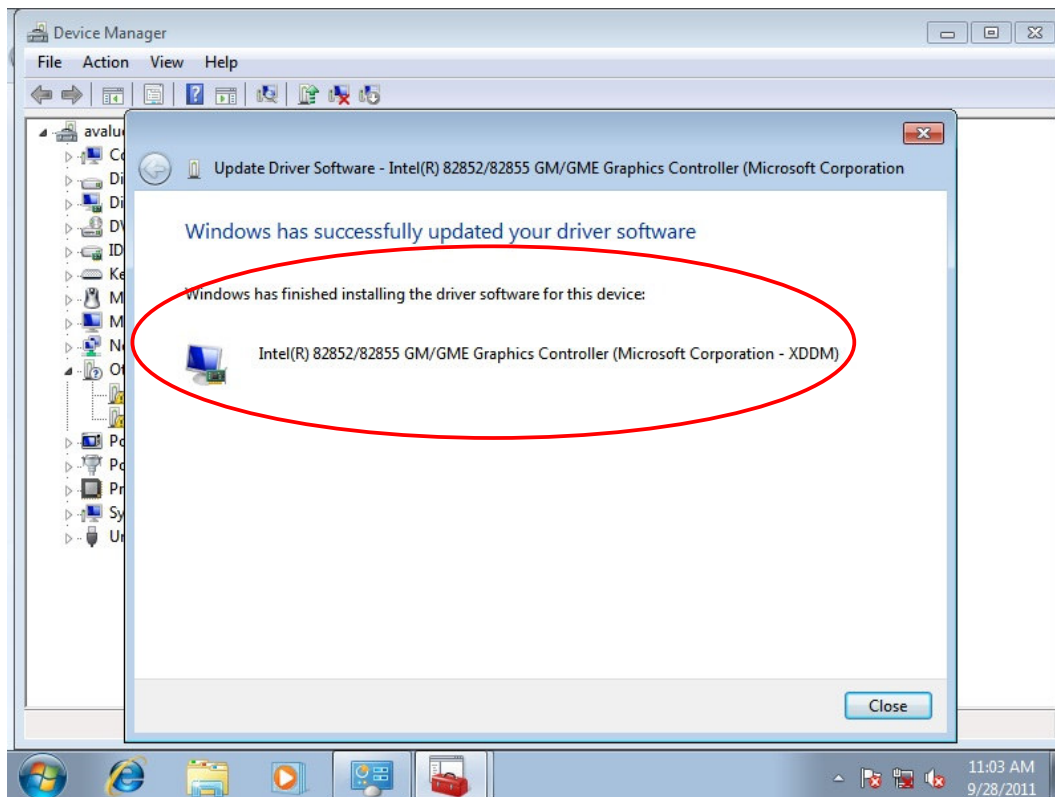
5. Next, to browse the driver software in the location which you prepare for.



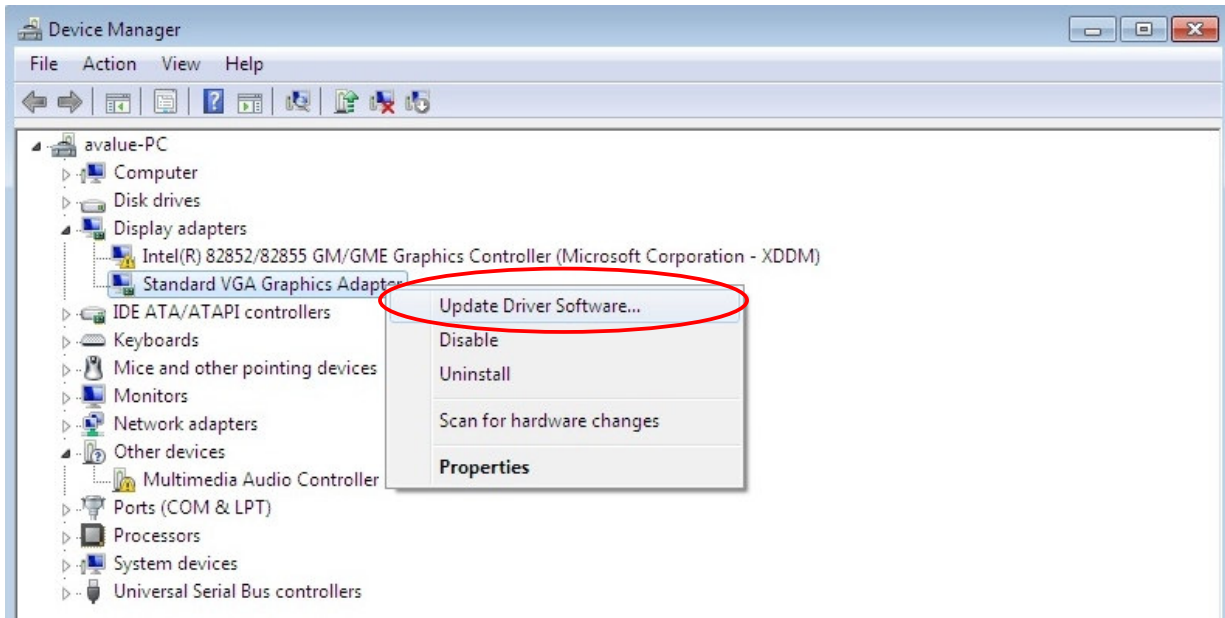
6. The screen will appear a warning window, to choose the “Install this driver software anyway” item.



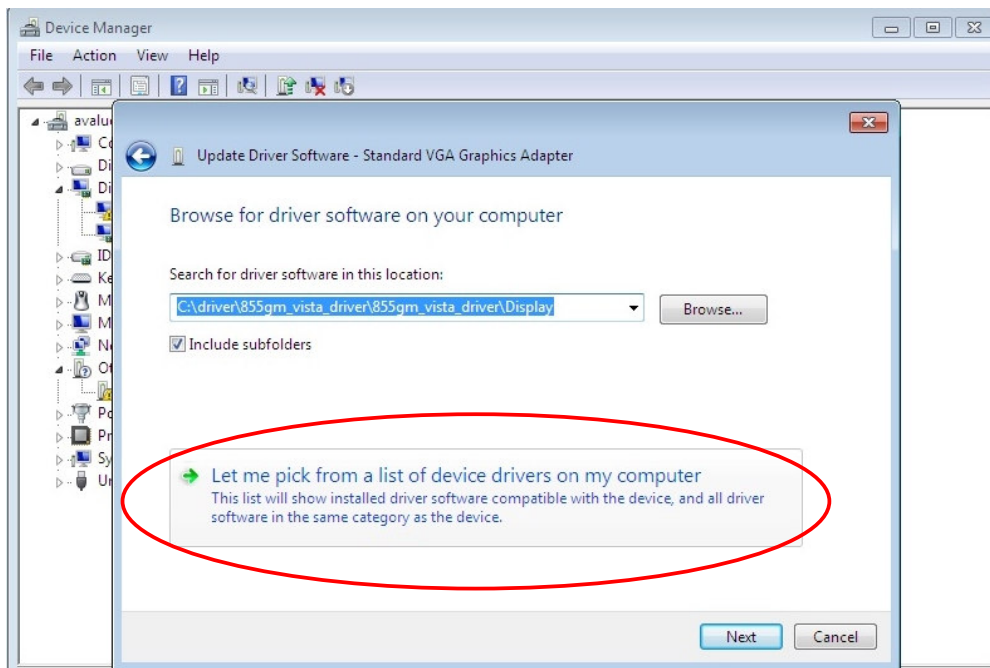
7. Then the driver software was installed on the system.



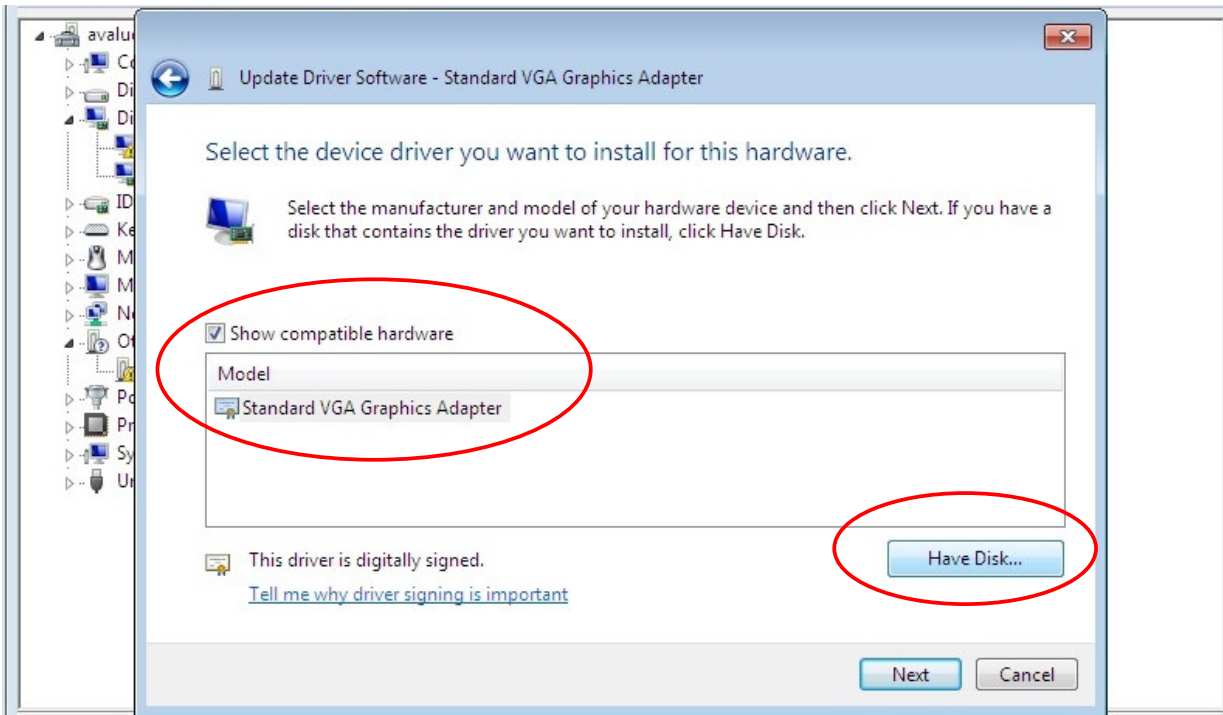
8.Next, it will see the Display adapters item which has two driver softwares:
One is Intel(R)82852/82855 GM/GME Graphics Controller(Microsoft Corporation-XDDM),
The other is Standard VGA Graphics Adapters.
To repeat the step3, choosing “Update Driver Software” on the Standard VGA Graphics Adapters, but this time is something different.



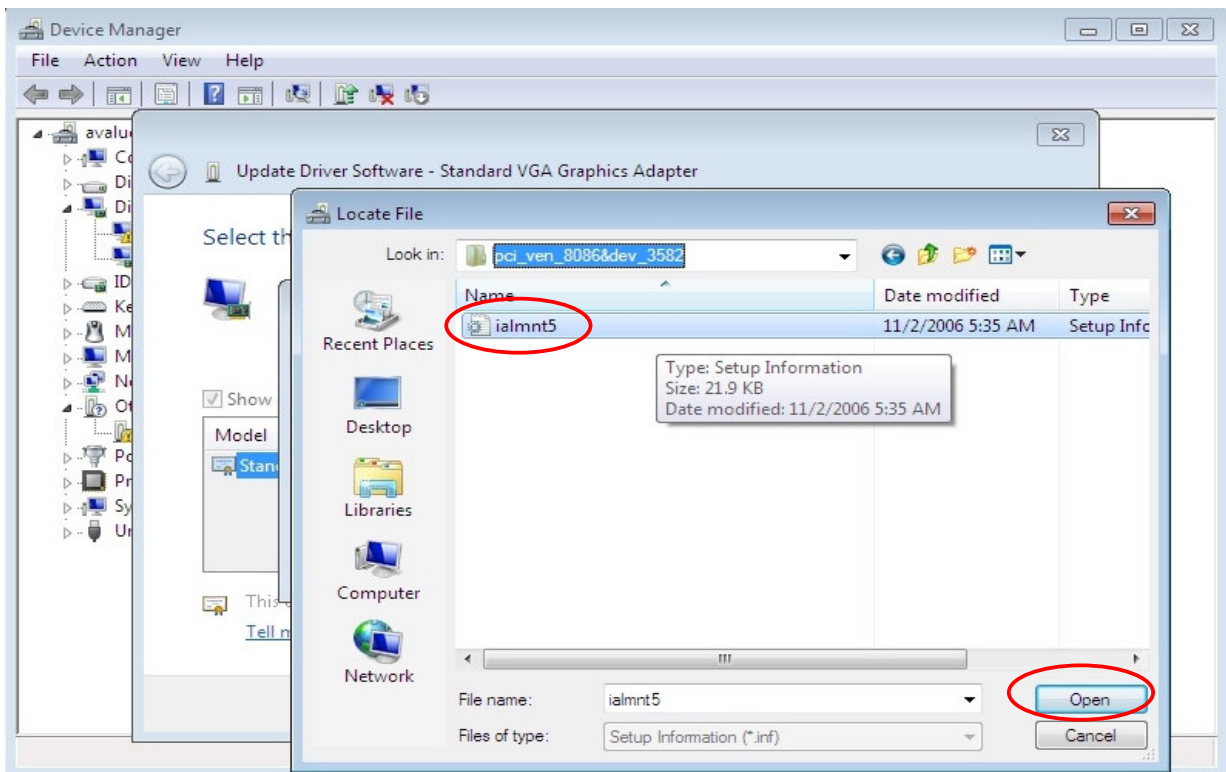
9.This time, on next screen, it must choose the “Let me pick from a list of device drivers on my computer”.



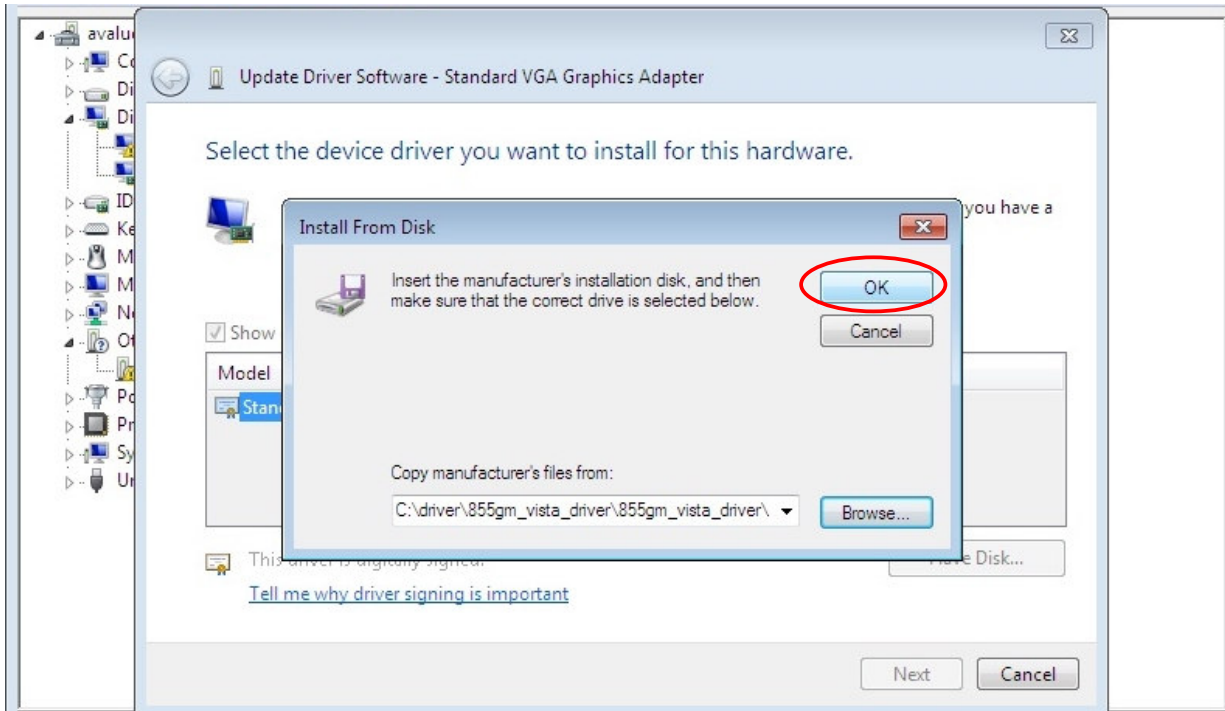
10. It will see the compatible hardware just only has the Standard VGA Graphics Adapter, so has to choose the “Have Disk” item.



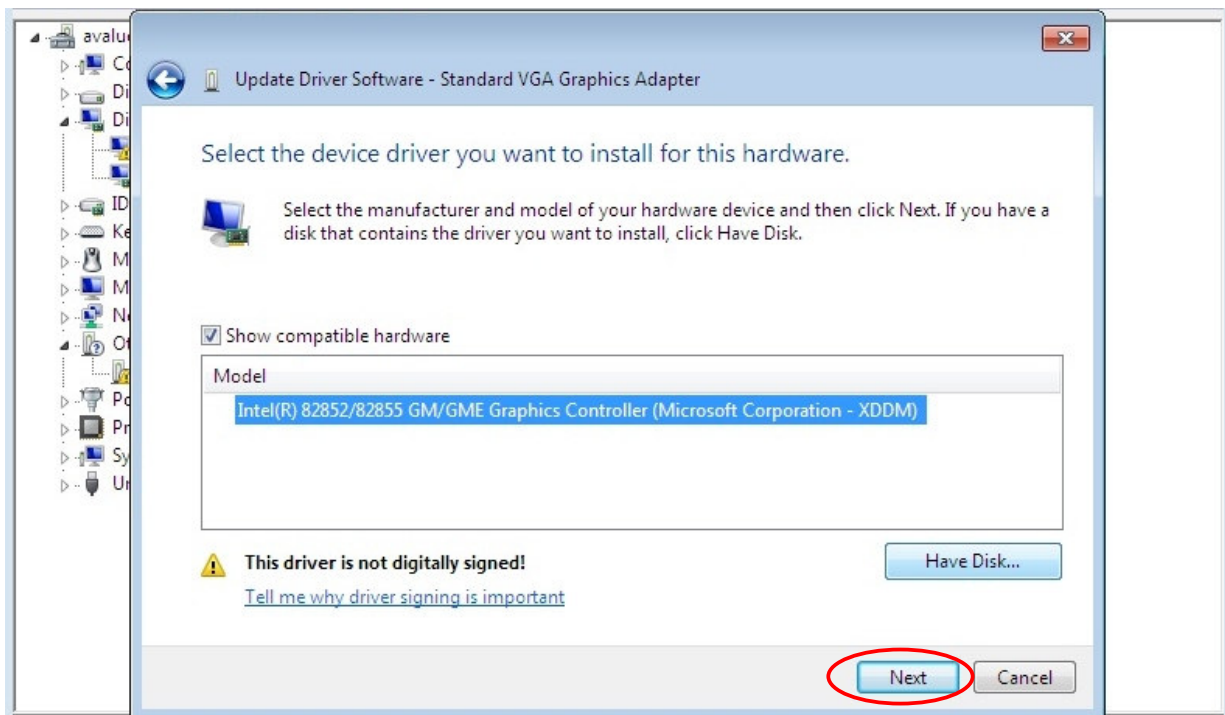
11. To browse the locate file is named “ ialmnt5.inf ” on the 855gm_vista_driver folder and open it.



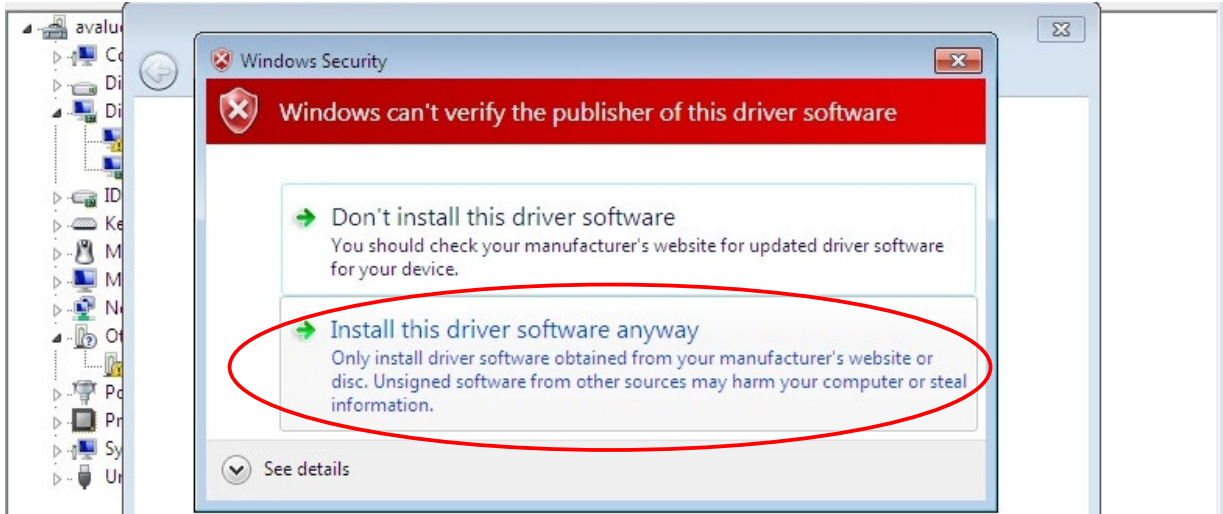
12. Then press "OK".



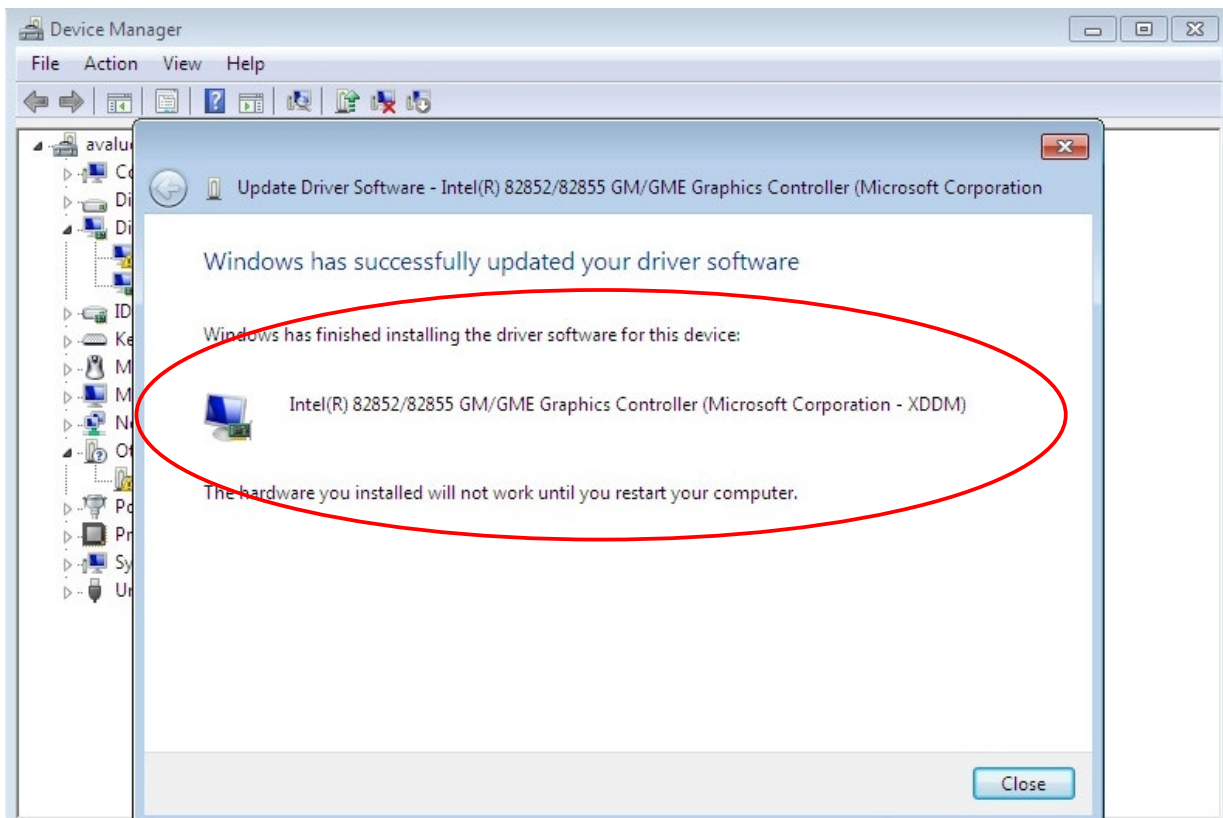
13. It will see the compatible hardware has the "Intel(R)82852/82855 GM/GME Graphics Controller(Microsoft Corporation-XDDM)" model, and press "Next".



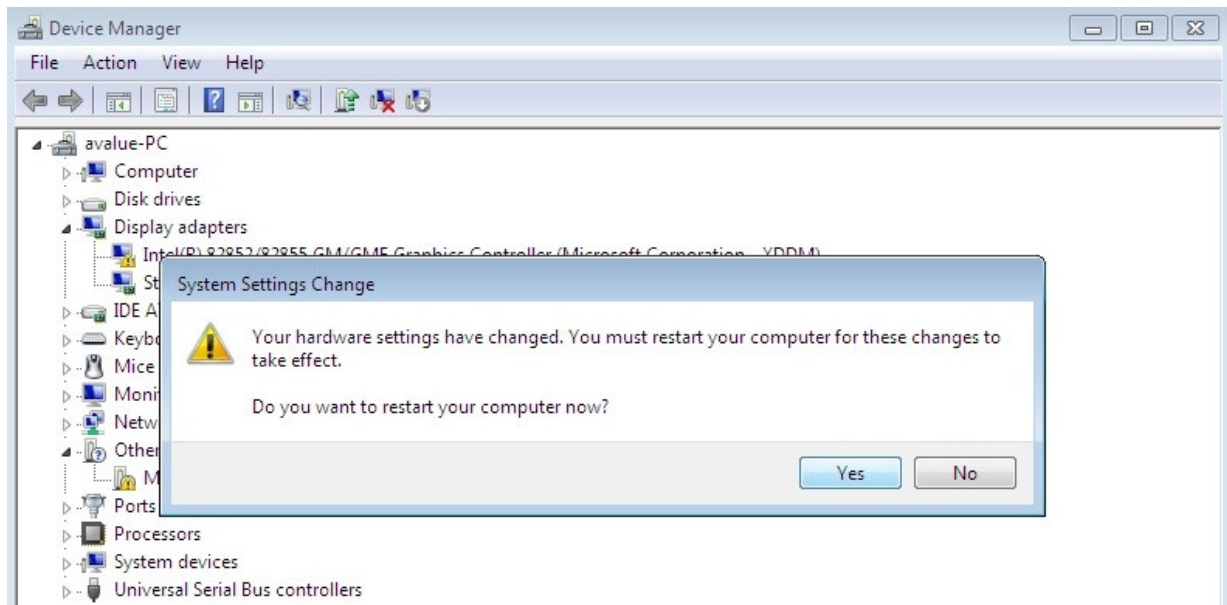
14. Next screen will appear a warning window, to choose the “Install this driver software anyway” item.



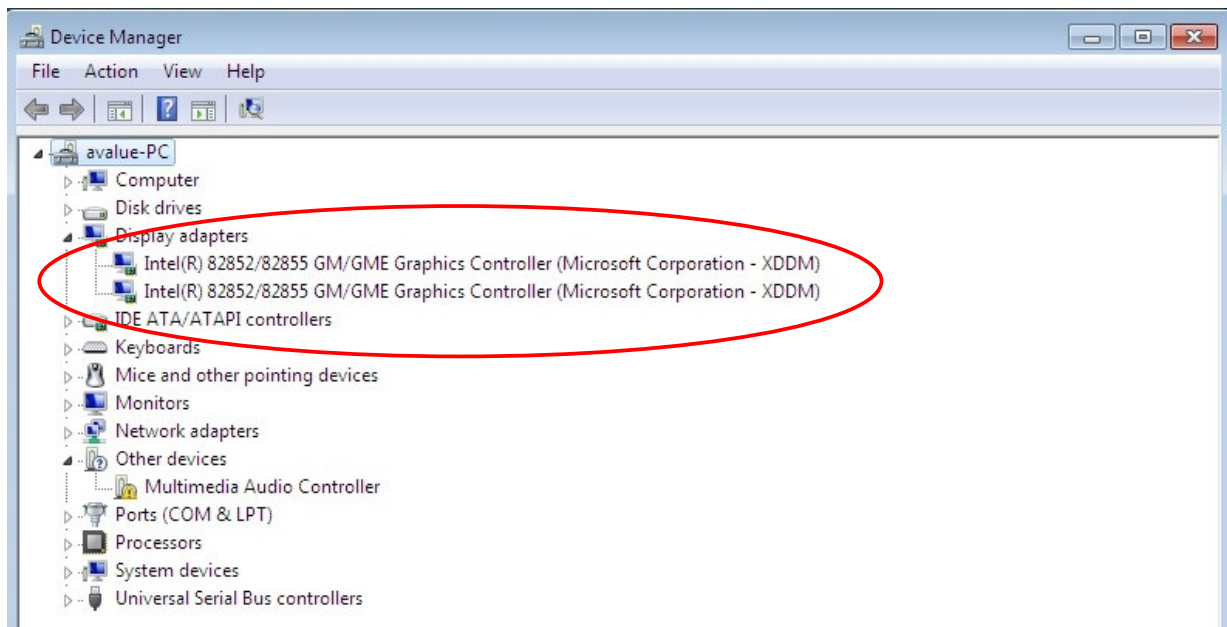
15. Then the driver software was installed on the system.



16. Then to restart the computer.



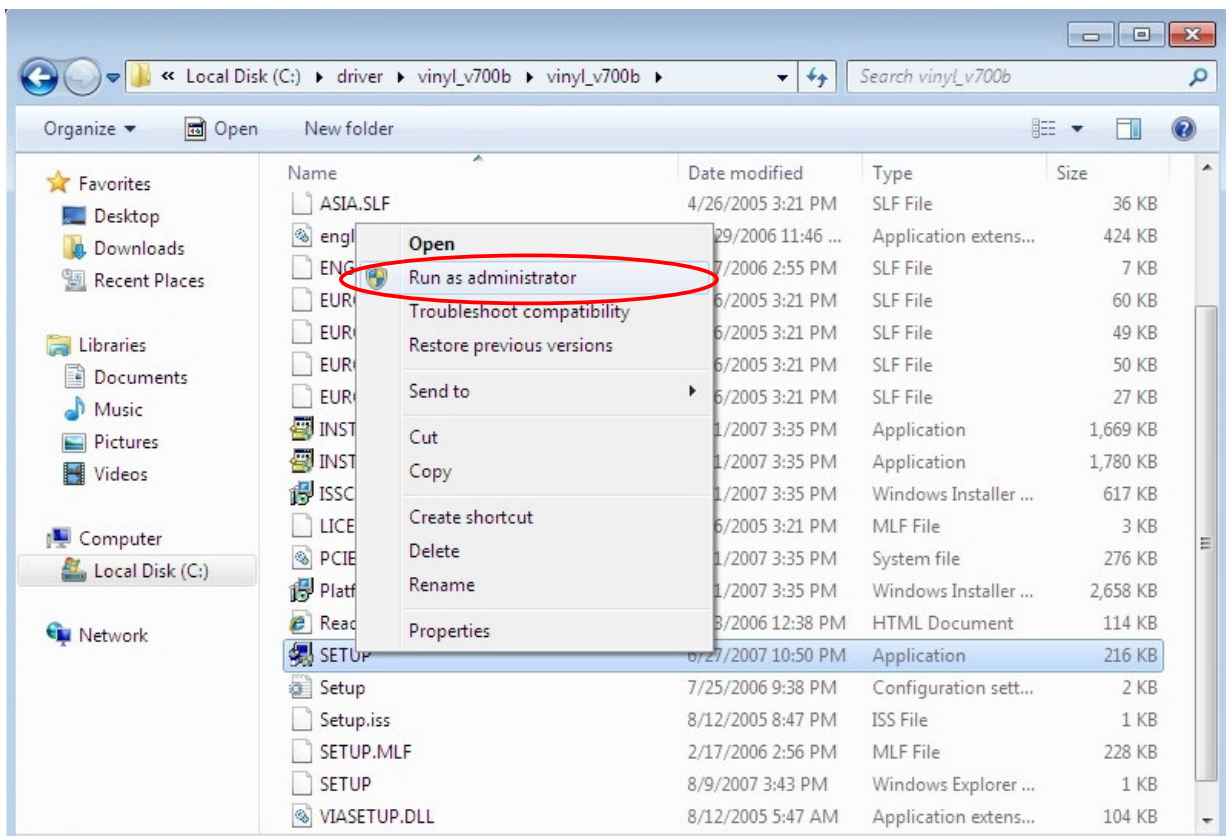
17. After rebooting the computer, it will see two “Intel(R)82852/82855 GM/GME Graphics Controller(Microsoft Corporation-XDDM)” on the Display adapters.



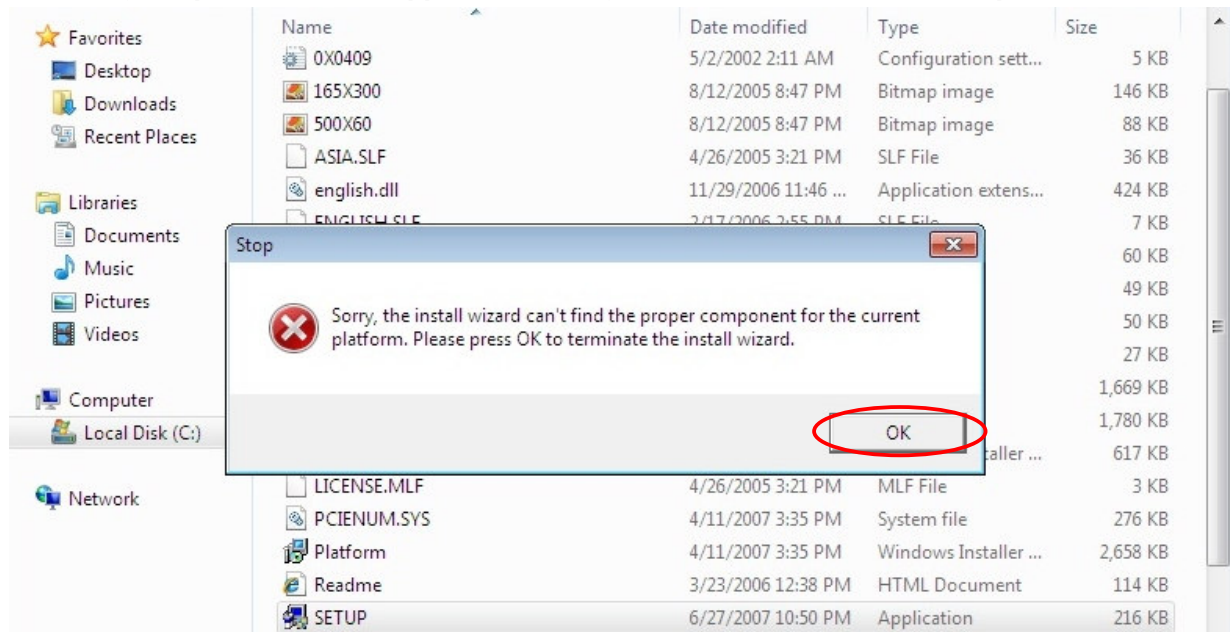
Now the Display adapters driver software has be installed successfully.

18.Next, to open the “vinyl_v700b” folder and to execute the “SETUP.exe”.

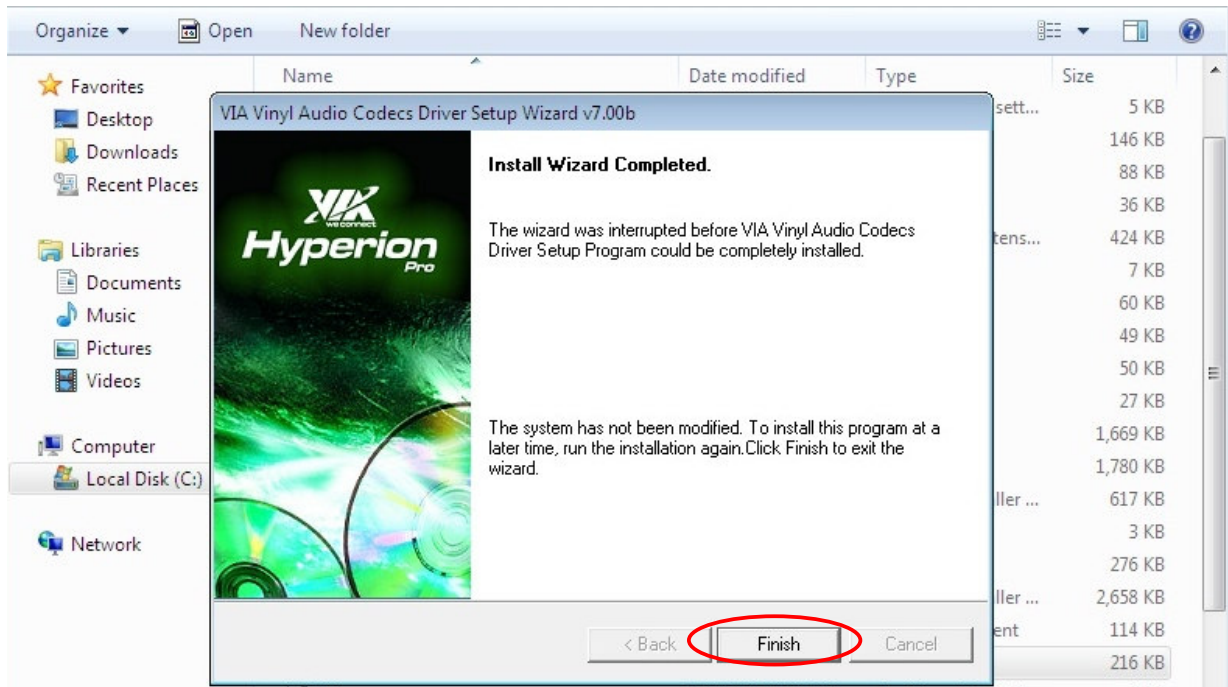
19.It must execute the “SETUP.exe” with “Run as administrator” item.



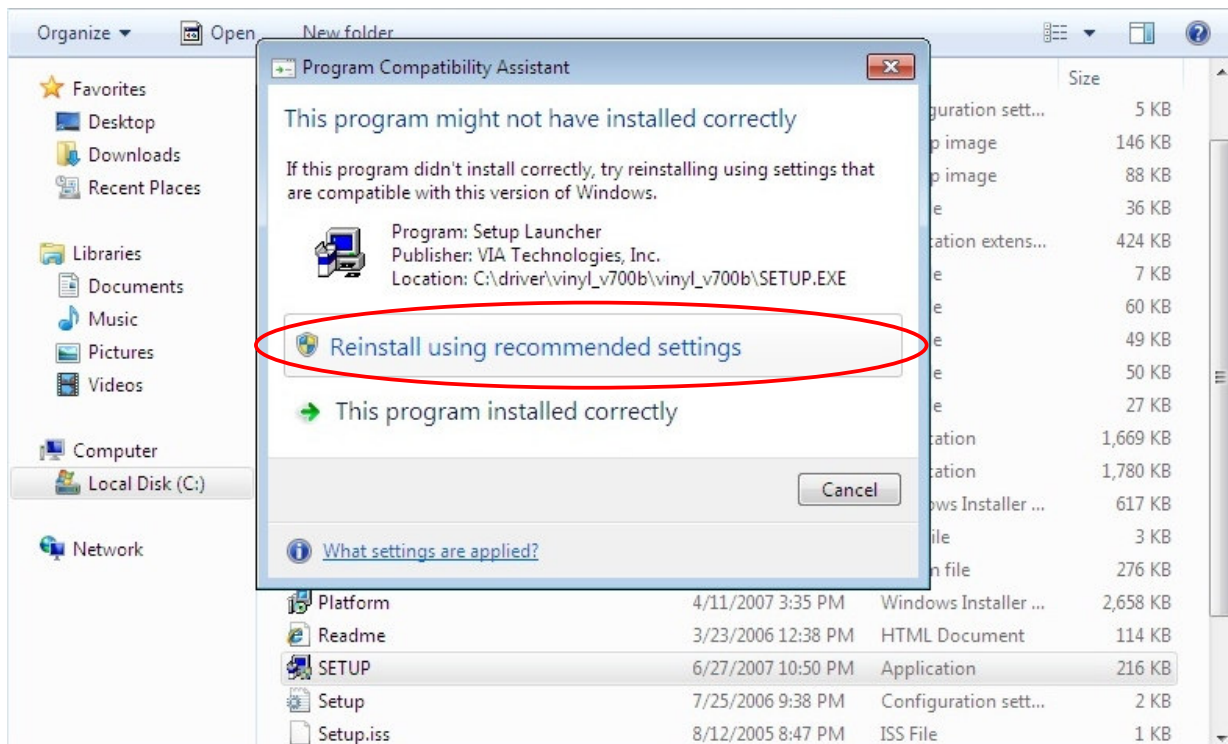
20.During the process, it will appear a warning window likes below, then to press “OK”.



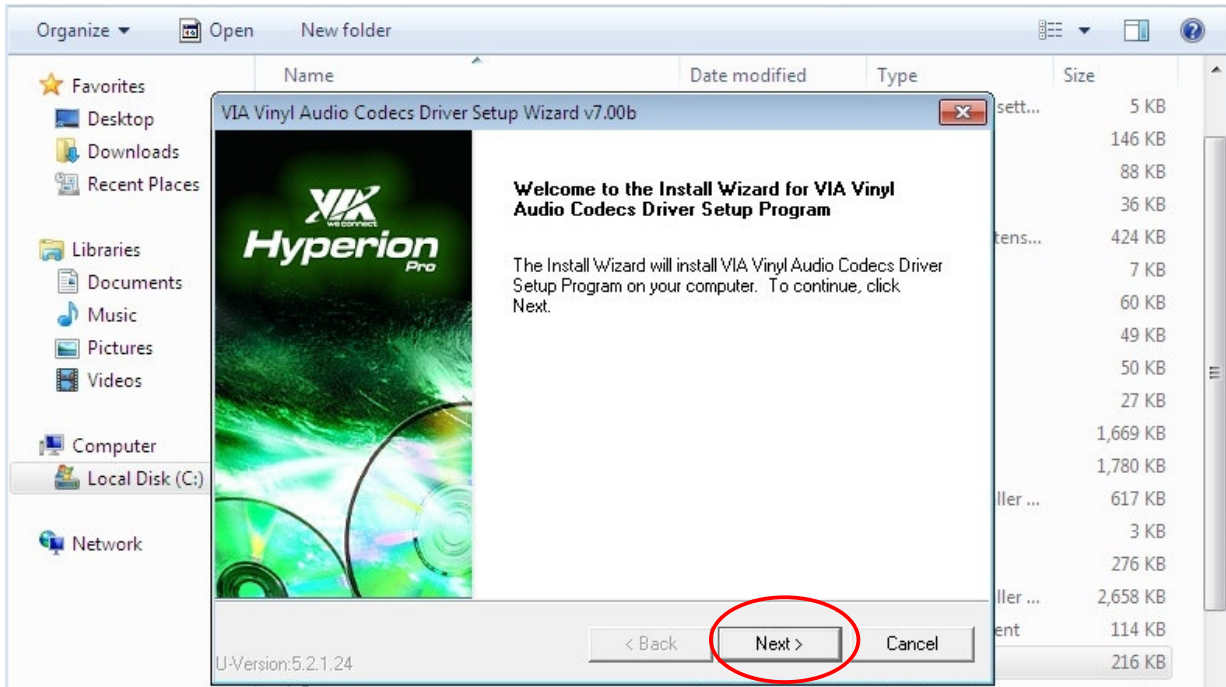
21.To press the “Finish” on the screen.



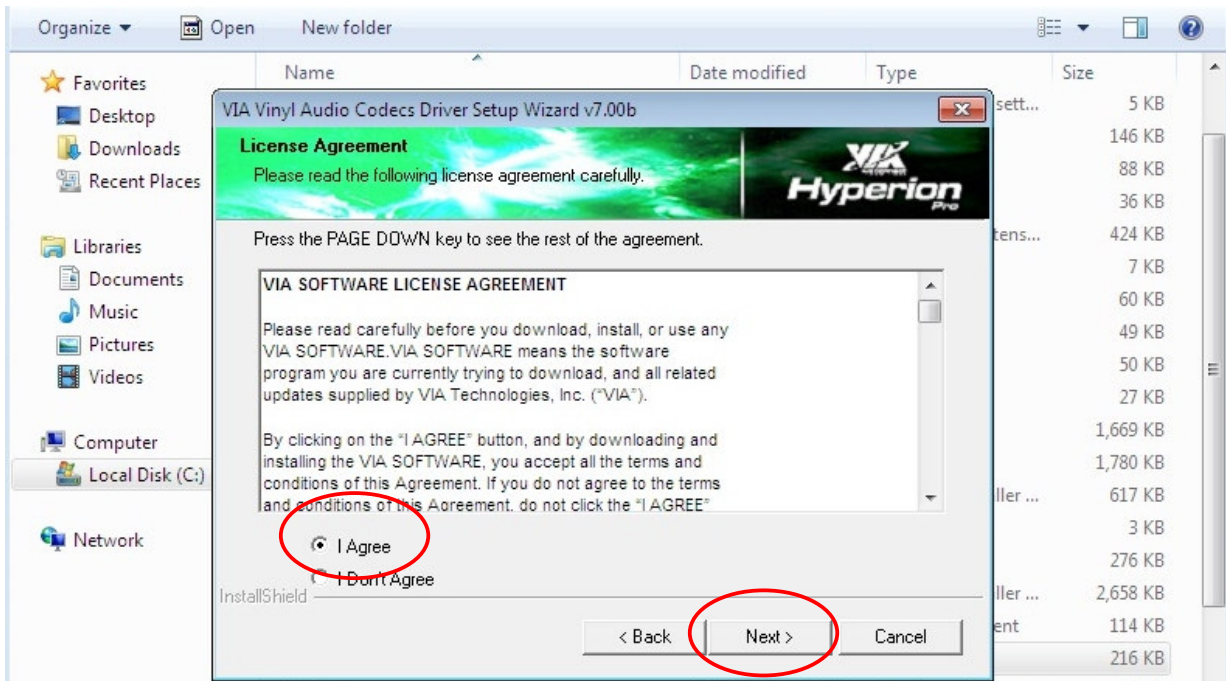
22.Waiting for a while, the system should appear a window which ask you if to reinstall the software, to choose the “Reinstall using recommended settings”.



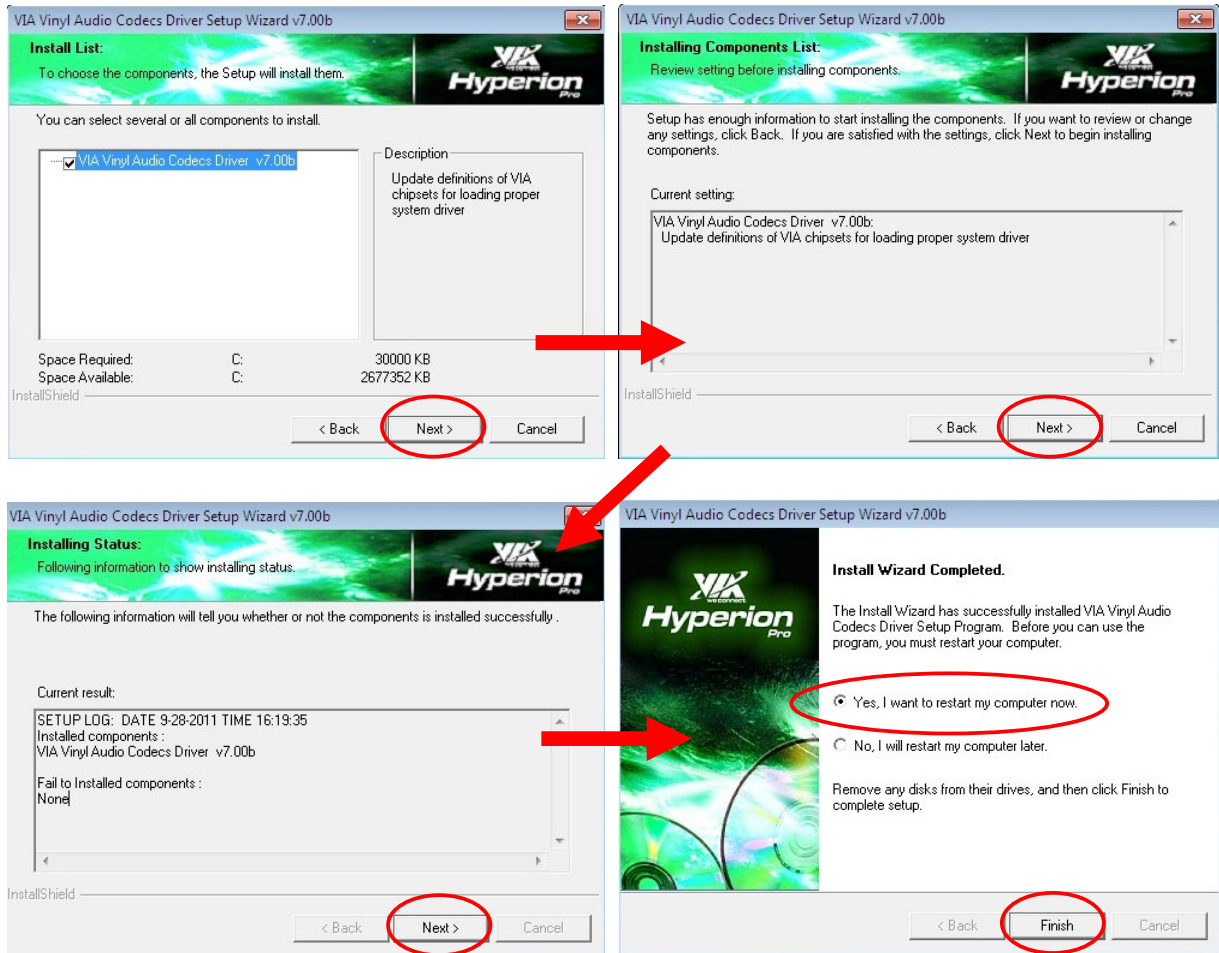
23. There will appear a Setup Wizard and to press "Next".



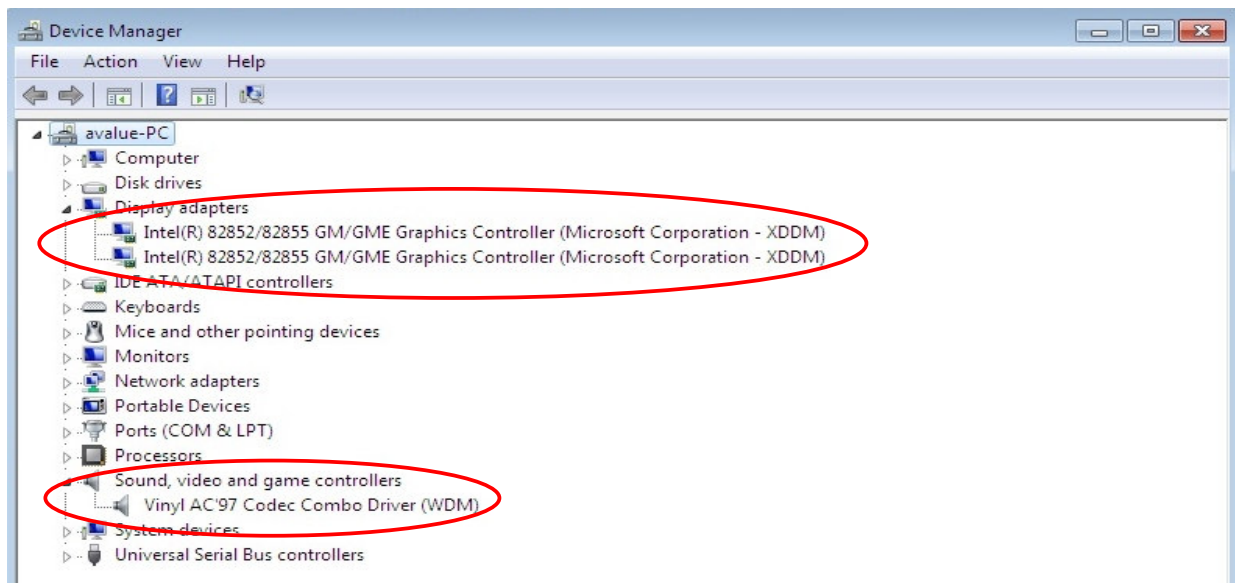
24. To choose "I Agree" and to press "Next".



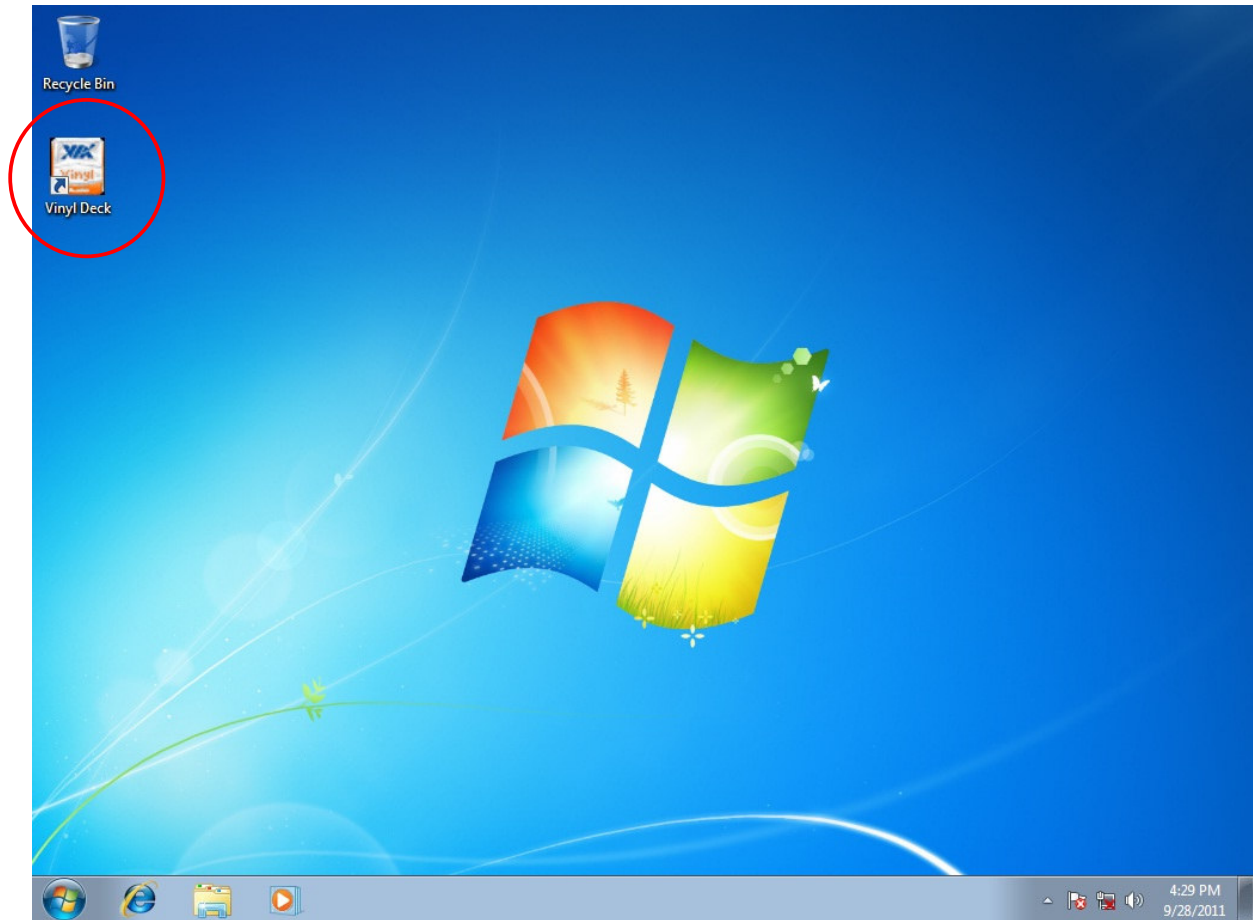
25. Then to press “ Next ” continuity until finishing and to reboot the computer.



26. Now these driver softwares have be installed successfully.



27. In the end, it will see an icon on the desktop is named "Viny Deck".



AE :Fox Hsu

Date :2011/9/28