

Subject : Step by step to update firmware in EPM-1525 for specific panel supporting

Document No: S12012

Date: 2012/07/24

Model Name. EPM-1525

AE :

Purpose :

This document shows you how to setup/program firmware for Realtek RTD2553V chipset

Before you update firmware, please make sure you have correct firmware for your panel.

Contact Avalue to get necessary AP, firmware and tool.

Step by Step to update firmware :

equipments:

- 1, ISP Board (P/N:E9697152502R)
- 2, Pin-to-Pin 25-pin parallel cable (Female to Male)
- 3, DB15 VGA cable (Male to Male)



OS & Program:

- 1, A PC with XP professional
- 2, Realtek firmware update tools : RealtekToolsetup.exe
- 3, Port I/O driver : Port95nt.exe
- 4, firmware: **contact Avalue** (firmware supports AU M150XN07 by default)

Prepare environment:

- 1, Connect ISP Board (E9697152502R) to your PC LPT port.

Avalue Technology Inc.

7F, 228, Lian-Cheng Road, Chung Ho City, Taipei, Taiwan R.O.C.

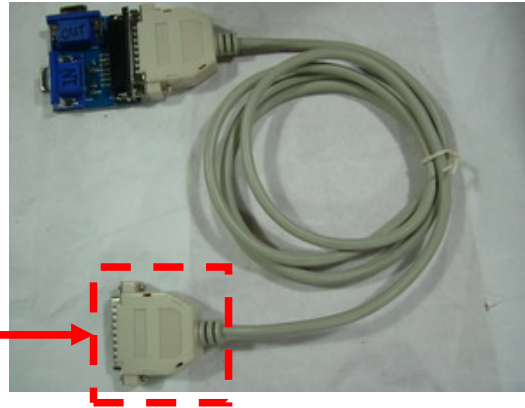
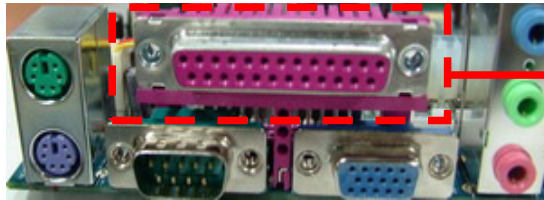
www.avalue.com.tw
sales@avalue.com.tw
Tel:+886-2-82262345
Fax:+886-2-82262777

Avalue Europe
sales.europe@avalue.com.tw
Tel: +45-7025-0310
Fax: +45-4975-5026

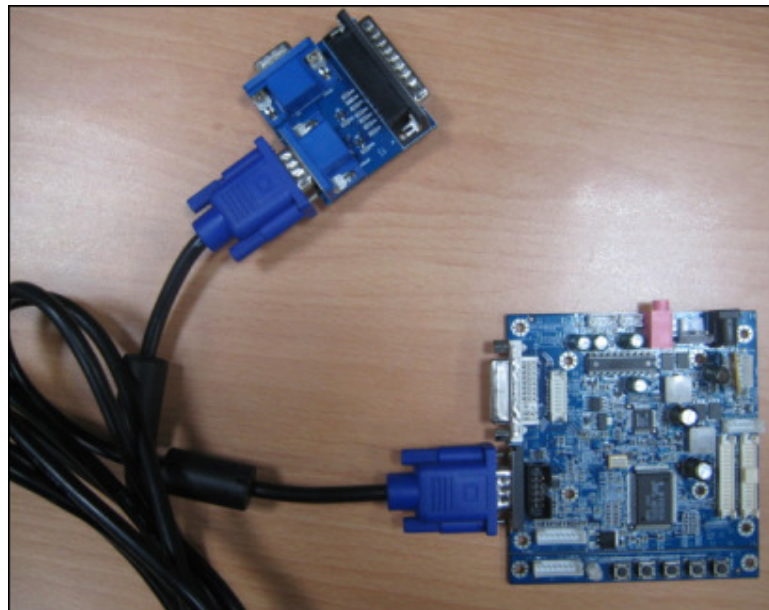
Avalue USA
sales@avalue-usa.com
Tel: +1-732-578-0200
Fax: +1-732-578-0250

BCM Advanced Research
BCMSales@bcmcom.com
Tel: +1-949-470-1888
Fax: +1-949-470-0971

Avalue China
sales.china@avalue.com.cn
Tel: +86-21-5426-3399
Fax: +86-21-6495-0370



2, Connect ISP Board (E9697152502R) to EPM-1525 DB15 connector



3, offer power to EPM-1525

Program procedure:

1, install "RealtekToolsetup.exe" and "Port95nt.exe" in your PC with WinXP.

There will be a shortcut named "RTDTool_VER3.0" () on the desktop.

2, execute "RTDTool_VER3.0" by double click

3, Click "RTD 2120 ISP"

Avalue Technology Inc.

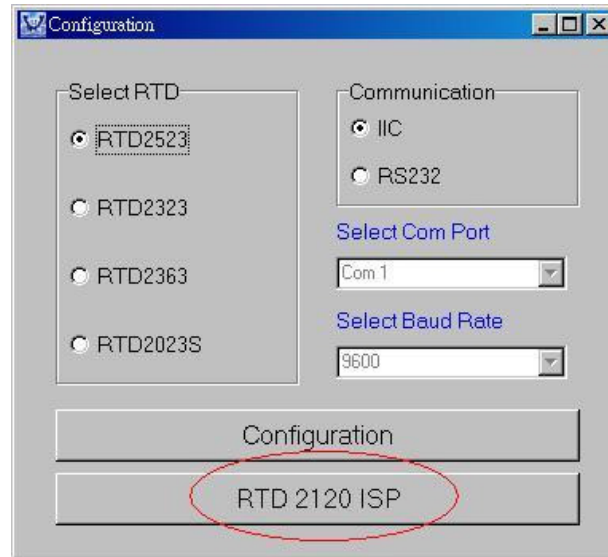
www.avalue.com.tw
sales@avalue.com.tw
Tel:+886-2-82262345
Fax:+886-2-82262777

Avalue Europe
sales.europe@avalue.com.tw
Tel: +45-7025-0310
Fax: +45-4975-5026


Avalue USA
sales@avalue-usa.com
Tel: +1-732-578-0200
Fax: +1-732-578-0250

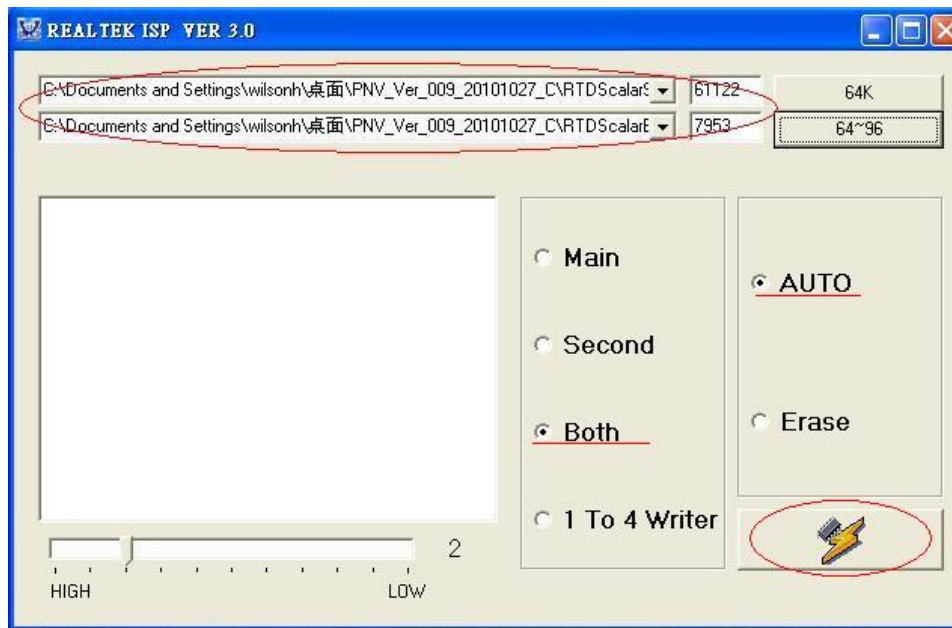
7F, 228, Lian-Cheng Road, Chung Ho City, Taipei, Taiwan R.O.C.
BCM Advanced Research
BCMSales@bcmcom.com
Tel: +1-949-470-1888
Fax: +1-949-470-0971

Avalue China
sales.china@avalue.com.cn
Tel: +86-21-5426-3399
Fax: +86-21-6495-0370



- Click the <64K> button to select the firmware file "RTDScalarSeries.hex" (**contact Avalue for correct firmware**)
- Click the <64~96> button to select "RTDScalarExtend.hex" (**contact Avalue for correct firmware**)
- Select "Both" and "AUTO" item.

Click  button to flash the firmware into EPM-1525.



Avalue Technology Inc.

www.avalue.com.tw
 sales@avalue.com.tw
 Tel:+886-2-82262345
 Fax:+886-2-82262777

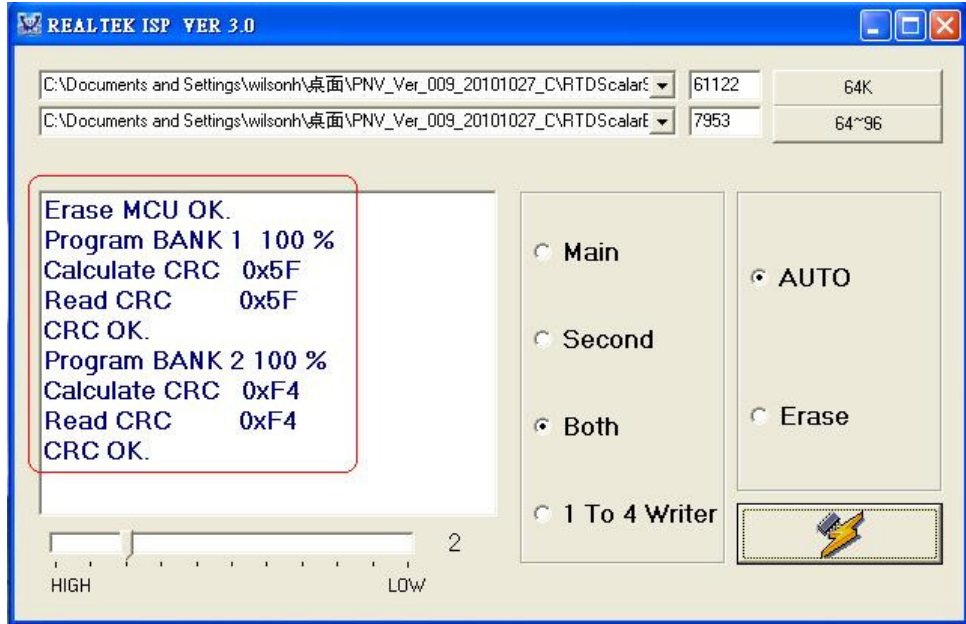
Avalue Europe
 sales.europe@avalue.com.tw
 Tel: +45-7025-0310
 Fax: +45-4975-5026

Avalue USA
 sales@avalue-usa.com
 Tel: +1-732-578-0200
 Fax: +1-732-578-0250

7F, 228, Lian-Cheng Road, Chung Ho City, Taipei, Taiwan R.O.C.
 BCM Advanced Research
 BCM5Sales@bcmcom.com
 Tel: +1-949-470-1888
 Fax: +1-949-470-0971

Avalue China
 sales.china@avalue.com.cn
 Tel: +86-21-5426-3399
 Fax: +86-21-6495-0370

5, After flash the firmware, please make sure there is no CRC error in the MsgBox.
 Then remove power cord for EPM-1525



Avalue Technology Inc.

7F, 228, Lian-Cheng Road, Chung Ho City, Taipei, Taiwan R.O.C.

www.avalue.com.tw
 sales@avalue.com.tw
 Tel:+886-2-82262345
 Fax:+886-2-82262777

Avalue Europe
 sales.europe@avalue.com.tw
 Tel: +45-7025-0310
 Fax: +45-4975-5026

Avalue USA
 sales@avalue-usa.com
 Tel: +1-732-578-0200
 Fax: +1-732-578-0250

BCM Advanced Research
 BCMSales@bcmcom.com
 Tel: +1-949-470-1888
 Fax: +1-949-470-0971

Avalue China
 sales.china@avalue.com.cn
 Tel: +86-21-5426-3399
 Fax: +86-21-6495-0370