

## FAQ / Application Note

**Subject : How to make connection for LCD Kit with RSC-W910.**

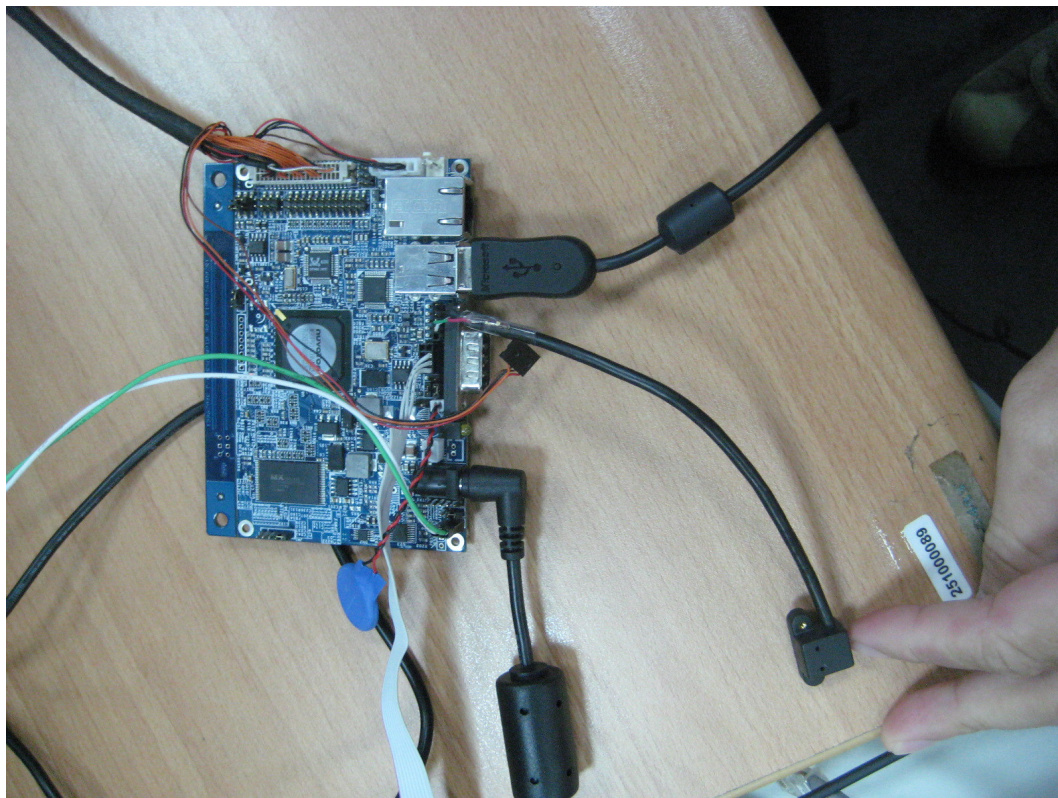
FAQ Document No:	Date: 2009/09/14
------------------	------------------

Model Name: <b>RSC-W910</b>	Rev. A1
-----------------------------	---------

Category:  General  H/W  S/W  Others, 寫小分類

**Purpose :**  
SOP for LCD Kit connection.

### Cable connection overview.



**Avalue Technology Inc.**

7F, 228, Lian-Cheng Road, Chung Ho City, Taipei, Taiwan R.O.C.

www.avalue.com.tw  
sales@avalue.com.tw  
Tel: +886-2-82262345  
Fax: +886-2-82262777

Avalue Europe  
sales.europe@avalue.com.tw  
Tel: +45-7025-0310  
Fax: +45-4975-5026

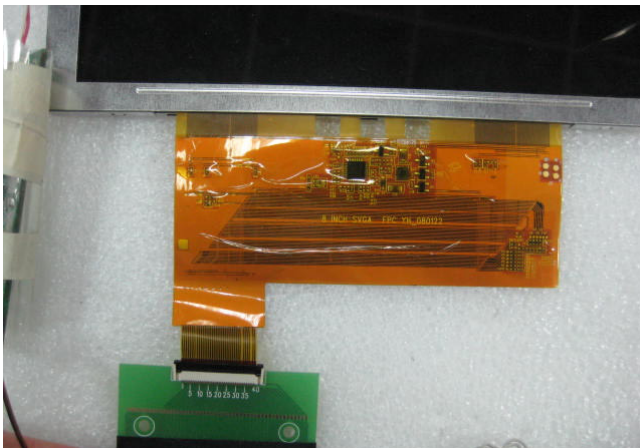
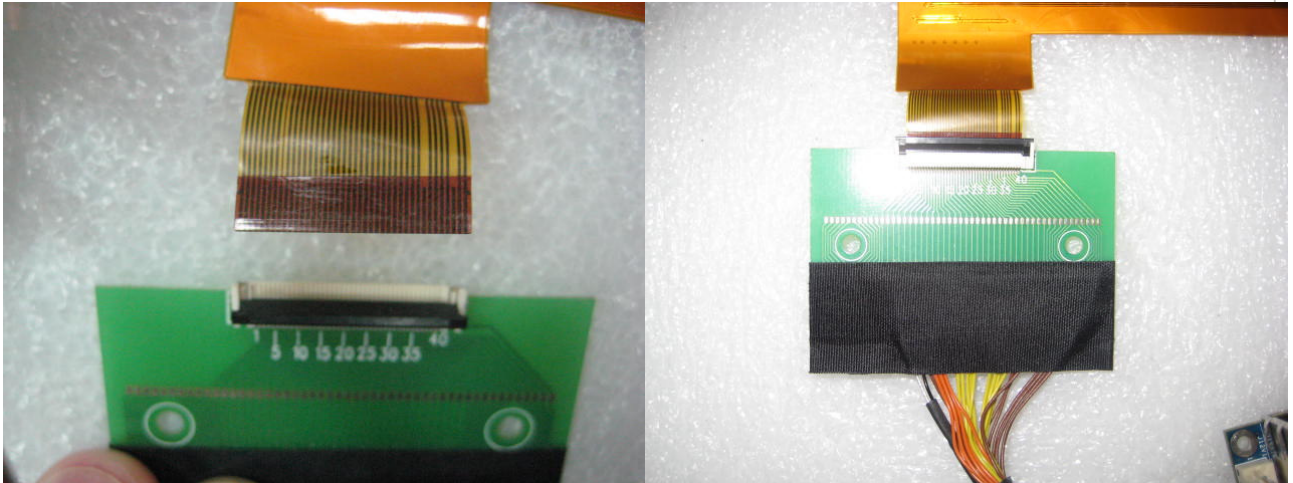
Avalue USA  
sales@avalue-usa.com  
Tel: +1-732-578-0200  
Fax: +1-732-578-0250

BCM Advanced Research  
BCMSales@bcmcom.com  
Tel: +1-949-470-1888  
Fax: +1-949-470-0971

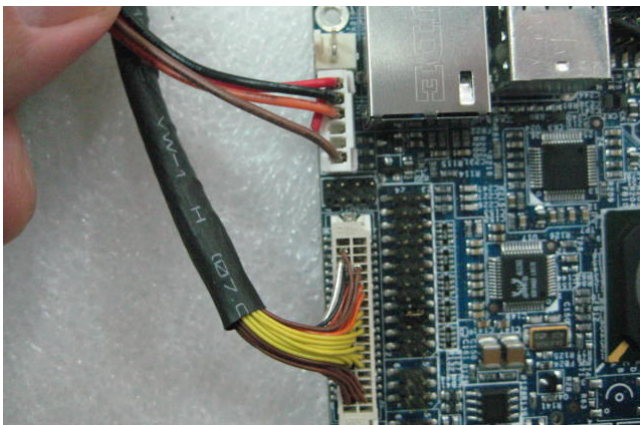
Avalue China  
sales.china@avalue.com.cn  
Tel: +86-21-5426-3399  
Fax: +86-21-6495-0370

**Procedure:**

- 1. Find LCD Panel FPC Cable. The contact pin is in rear side. Please make connection as below Pictures shows.**



- 2. connect LCD cable and Inverter cable to RSC-W910.**



**Avalue Technology Inc.**

www.avaluetech.com.tw  
 sales@avaluetech.com.tw  
 Tel:+886-2-82262345  
 Fax:+886-2-82262777

Avalue Europe  
 sales.europe@avaluetech.com.tw  
 Tel: +45-7025-0310  
 Fax: +45-4975-5026

Avalue USA  
 sales@avaluetech-usa.com  
 Tel: +1-732-578-0200  
 Fax: +1-732-578-0250

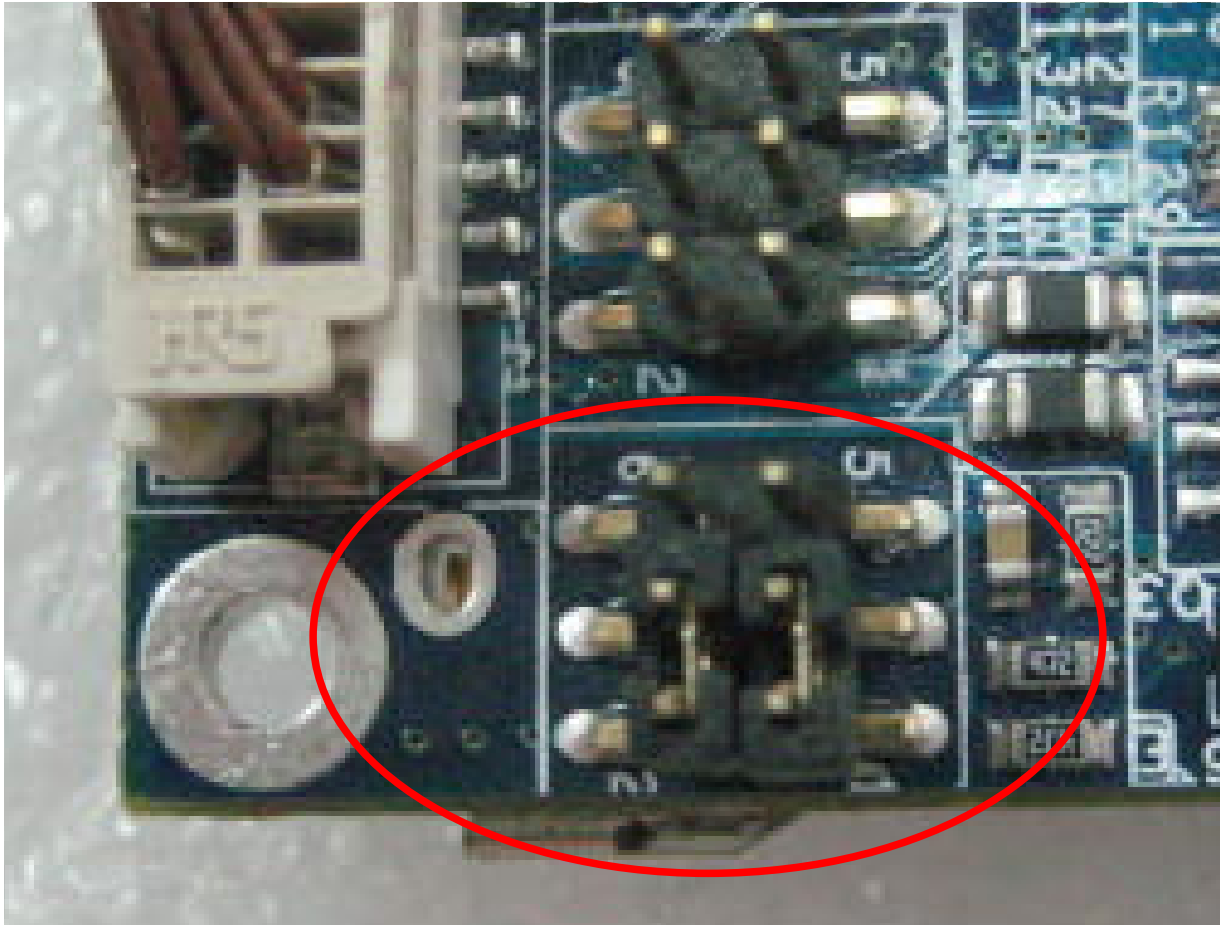
7F, 228, Lian-Cheng Road, Chung Ho City, Taipei, Taiwan R.O.C.

BCM Advanced Research  
 BCM5Sales@bcmcom.com  
 Tel: +1-949-470-1888  
 Fax: +1-949-470-0971

Avalue China  
 sales.china@avaluetech.com.cn  
 Tel: +86-21-5426-3399  
 Fax: +86-21-6495-0370

3. Find JSET1 Jumper setting for installation mode **Pin3-5 and Pin4-6** with jumper. After Installation is completed.

Please return the jumper to original positions **Pin1-3 and Pin2-4** with jumper..



**Avalue Technology Inc.**

www.avalue.com.tw  
sales@avalue.com.tw  
Tel:+886-2-82262345  
Fax:+886-2-82262777

Avalue Europe  
sales.europe@avalue.com.tw  
Tel: +45-7025-0310  
Fax: +45-4975-5026

Avalue USA  
sales@avalue-usa.com  
Tel: +1-732-578-0200  
Fax: +1-732-578-0250

BCM Advanced Research  
BCMSales@bcmcom.com  
Tel: +1-949-470-1888  
Fax: +1-949-470-0971

Avalue China  
sales.china@avalue.com.cn  
Tel: +86-21-5426-3399  
Fax: +86-21-6495-0370

7F, 228, Lian-Cheng Road, Chung Ho City, Taipei, Taiwan R.O.C.

Set RSC-W910 jumper “JSET1” in INSTALL mode (Turbo Writer Mode).

JSET1 =>1-3,4-6: NOR Boot Mode

JSET1 =>1-3,2-4: NAND Boot Mode

JSET1 =>3-5,4-6: Turbo Writer Mode

4. Boot ROM/Flash data bus width (JSET1)

