

## FAQ / Application Note

**Subject : How to install USB camera driver in Windows CE 6.0**

**FAQ Document No: S10018**

**Date: 2010/08/26**

**Model Name. All**

**Rev. A1**

**Category:** General H/W S/W Others, 寫小分類

**Purpose :**

1. Install the attached file as **Windows Embedded CE 6.0 USB Camera Driver.msi**.
2. After finishing install, open Visual Studio 2005 and create a new project for your own OS design.
3. the left dialog as **Catalog Items View**, you can check the new items for USB camera driver as follows,

### Avalue Technology Inc.

7F, 228, Lian-Cheng Road, Chung Ho City, Taipei, Taiwan R.O.C.

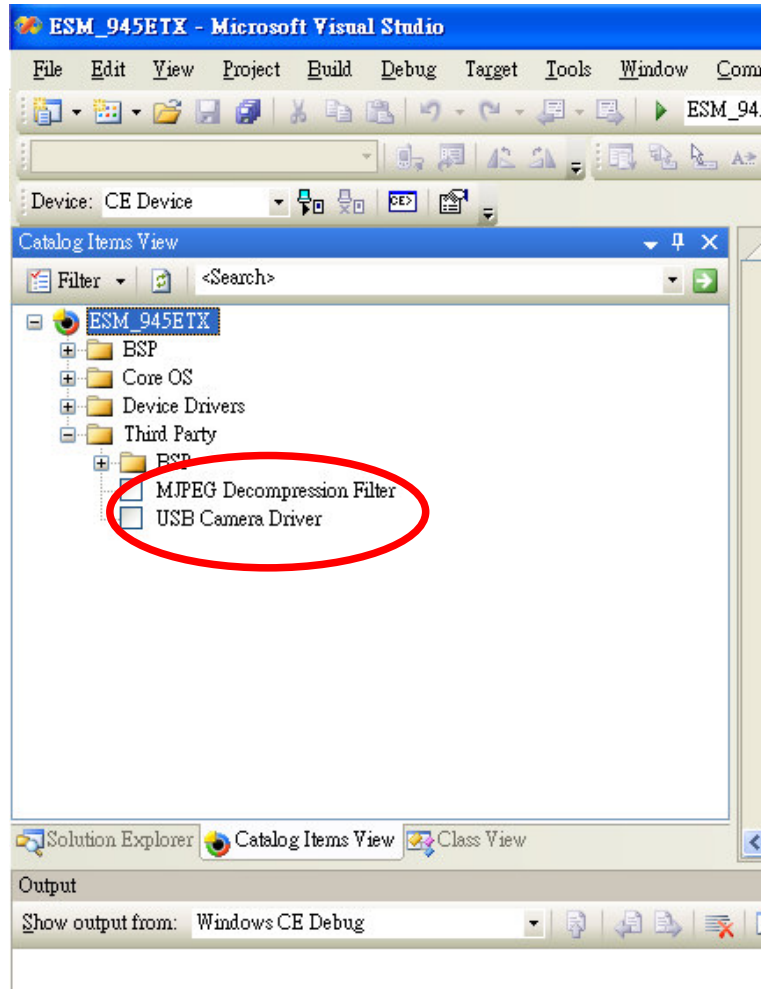
www.avaluetw.com  
sales@avaluetw.com  
Tel:+886-2-82262345  
Fax:+886-2-82262777

Avalue Europe  
sales.europe@avaluetw.com  
Tel: +45-7025-0310  
Fax: +45-4975-5026

Avalue USA  
sales@avaluetw-usa.com  
Tel: +1-732-578-0200  
Fax: +1-732-578-0250

BCM Advanced Research  
BCMSales@bcmcom.com  
Tel: +1-949-470-1888  
Fax: +1-949-470-0971

Avalue China  
sales.china@avaluetw.com.cn  
Tel: +86-21-5426-3399  
Fax: +86-21-6495-0370



**Avalue Technology Inc.**

www.avalue.com.tw  
sales@avalue.com.tw  
Tel:+886-2-82262345  
Fax:+886-2-82262777

Avalue Europe  
sales.europe@avalue.com.tw  
Tel: +45-7025-0310  
Fax: +45-4975-5026

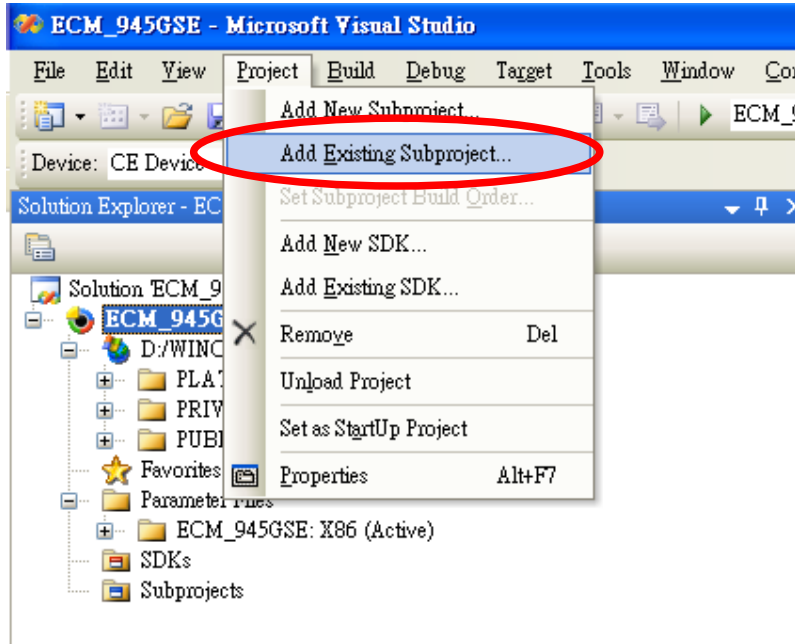
Avalue USA  
sales@avalue-usa.com  
Tel: +1-732-578-0200  
Fax: +1-732-578-0250

BCM Advanced Research  
BCMSales@bcmcom.com  
Tel: +1-949-470-1888  
Fax: +1-949-470-0971

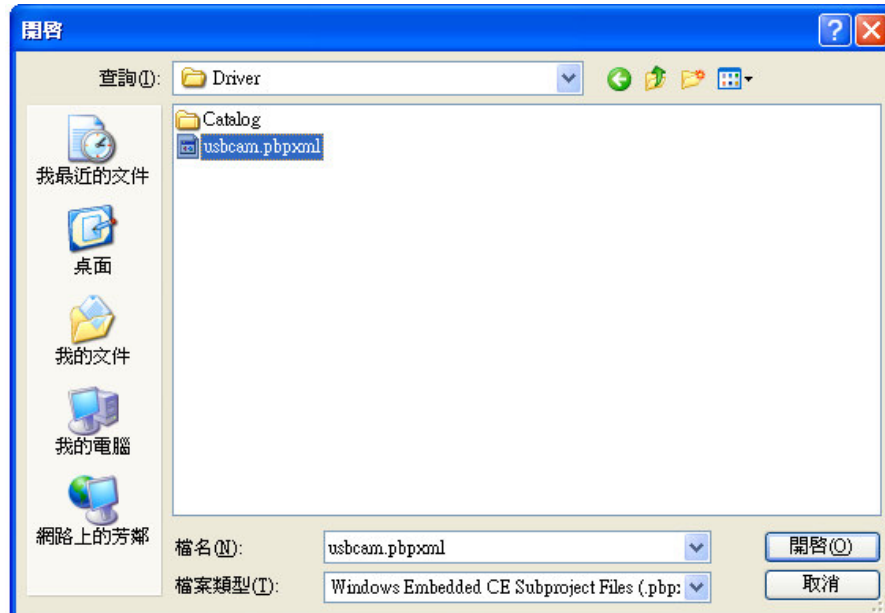
Avalue China  
sales.china@avalue.com.cn  
Tel: +86-21-5426-3399  
Fax: +86-21-6495-0370

7F, 228, Lian-Cheng Road, Chung Ho City, Taipei, Taiwan R.O.C.

4. In Pop-up menu of VS2005, click **Project**→**Add Existing Subproject...**



5. in Open File Dialog, click the specific Windows Embedded CE Subproject file (.pbpxml) of USB camera driver as follows,

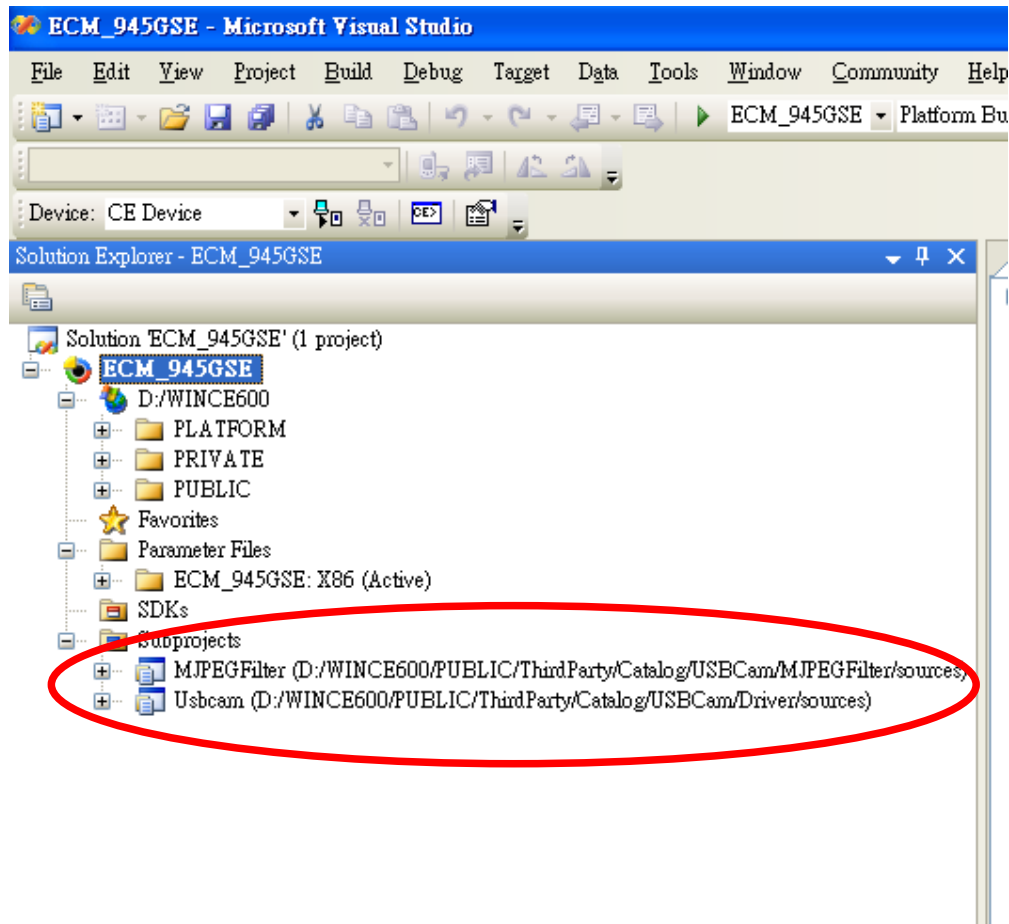


There are two .pbpxml files needed to use for USB camera driver:

- **C:\WINCE600\PUBLIC\ThirdParty\Catalog\USBCam\Driver\usbcam.pbpxml**

- **C:\WINCE600\PUBLIC\ThirdParty\Catalog\USBCam\MJPEGFilter\jpeg2rgb.pbpxml**

6. After finishing add existing subprojects you can get two subprojects in OS design in Solution Explorer as follows,



7. to adjust resolution settings for your own USB camera in registry file. The file path is:

**C:\WINCE600\PUBLIC\ThirdParty\Catalog\USBCam\Driver\usbcam.reg**

Line 30:

[HKEY\_LOCAL\_MACHINE\Drivers\USB\ClientDrivers\Video\_Class]

"Prefix"="CAM"

"Dll"="usbcam.dll"

"IClass"="{CB998A05-122C-4166-846A-933E4D7E3C86}"

; Default to Uncompressed QCIF if app doesn't specify

**"PreferredWidth"=dword:B0**

**"PreferredHeight"=dword:90**

"UncompressedSupport"=dword:1

**Avalue Technology Inc.**

7F, 228, Lian-Cheng Road, Chung Ho City, Taipei, Taiwan R.O.C.

www.avalue.com.tw  
sales@avalue.com.tw  
Tel:+886-2-82262345  
Fax:+886-2-82262777

Avalue Europe  
sales.europe@avalue.com.tw  
Tel: +45-7025-0310  
Fax: +45-4975-5026

Avalue USA  
sales@avalue-usa.com  
Tel: +1-732-578-0200  
Fax: +1-732-578-0250

BCM Advanced Research  
BCMSales@bcmcom.com  
Tel: +1-949-470-1888  
Fax: +1-949-470-0971

Avalue China  
sales.china@avalue.com.cn  
Tel: +86-21-5426-3399  
Fax: +86-21-6495-0370



"MJPEGSupport"=dword:0

8. Please remember to add USB host controller driver items in your OS design.
9. Implement **Build**→**Build Solution** in VS2005 to get a new NK.bin for your OS design.

