

Subject : EMX-945GSE-A1-DVIR 800x480 resolution Under CRT unplug Issue.

Document No: 092DS5IA

Date: 2009/03/06

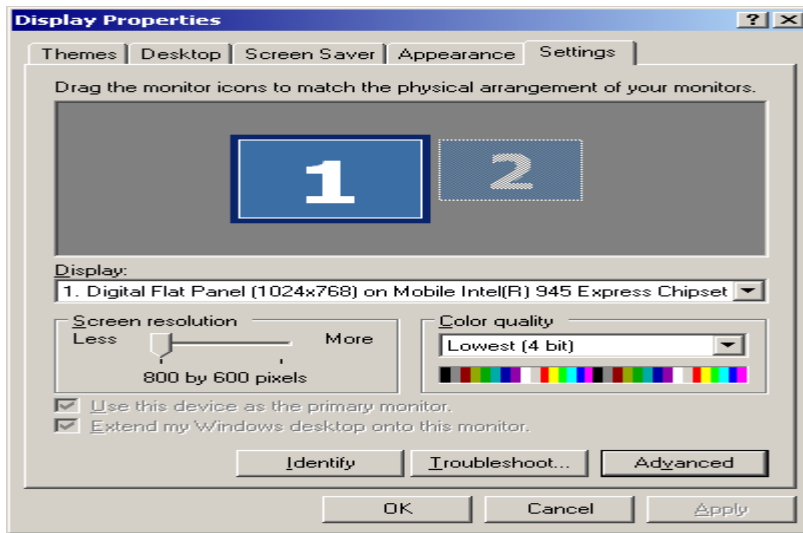
Model Name. EMX-945GSE-A1-DVIR

AE :

Purpose : EMX-945GSE-A1-DVIR LVDS panel 800x480 resolution display error as OS loading with CRT unplugged.

Problem Description:

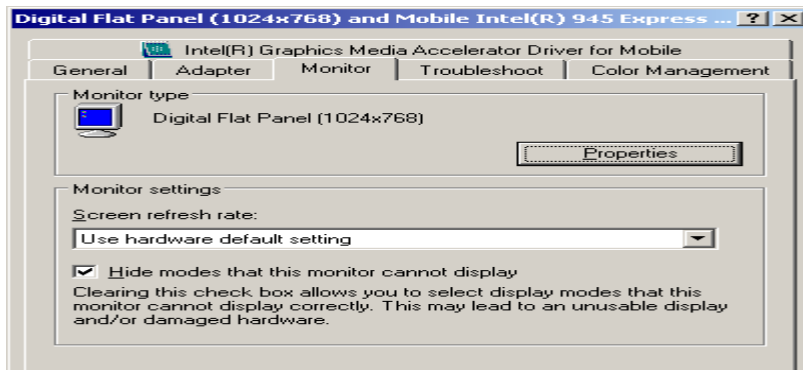
Due to 800x480 LVDS display frequency is different from CRT standard and OS default. 945GSE Graphic engine will miss 800x480 configuration setting while OS loading with CRT unplugged. It will cause Window XP display configuration missing proper setting for 800x480 66Hz.



Suggestion :

Please follow below steps for solved this problem.

1. Open Display Properties
2. Click "Advanced"
3. Switch to Monitor



Avalue Technology Inc.

7F, 228, Lian-Cheng Road, Chung Ho City, Taipei, Taiwan R.O.C.

www.avalu.com.tw
sales@avalu.com.tw
Tel:+886-2-82262345
Fax:+886-2-82262777

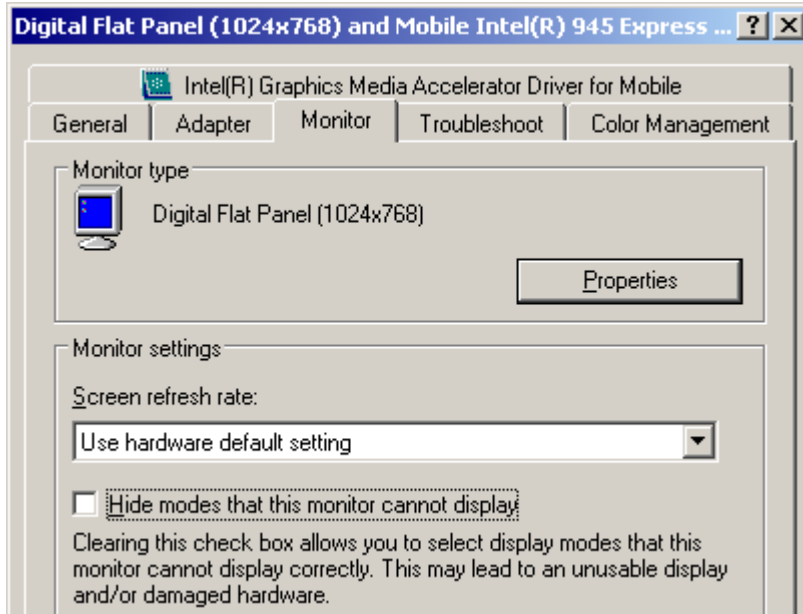
Avalue Europe
sales.europe@avalu.com.tw
Tel: +45-7025-0310
Fax: +45-4975-5026

Avalue USA
sales@avalu-usa.com
Tel: +1-732-578-0200
Fax: +1-732-578-0250

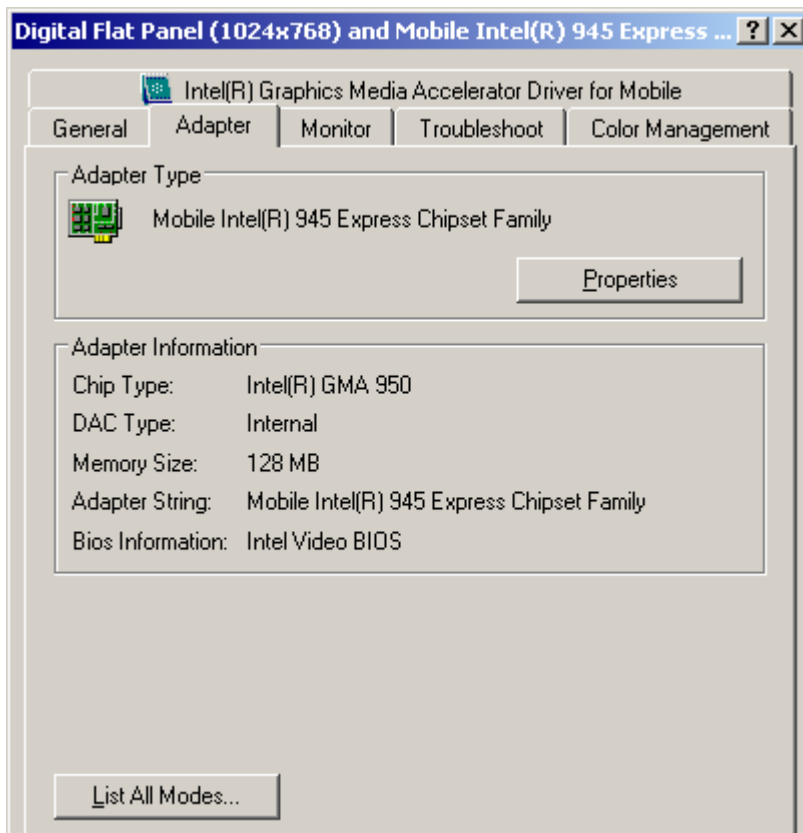
BCM Advanced Research
BCMSales@bcm.com.com
Tel: +1-949-470-1888
Fax: +1-949-470-0971

Avalue China
sales.china@avalu.com.cn
Tel: +86-21-5426-3399
Fax: +86-21-6495-0370

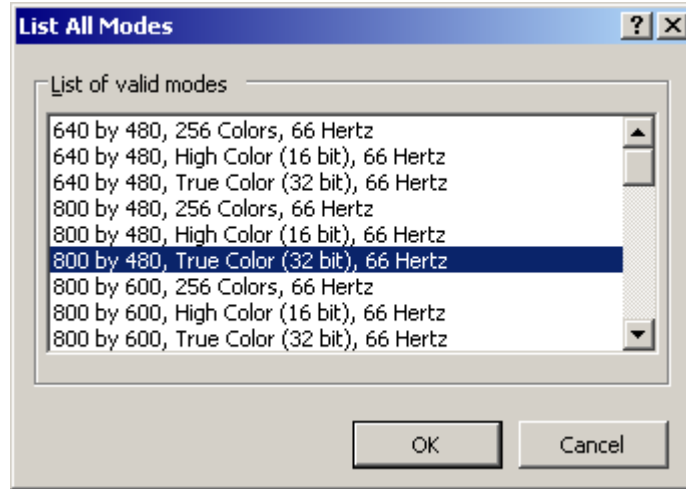
4. Unmark the Check point of "Hide Mode that this monitor cannot display" and OK.



5. Switch to Adapter and Click the "List All Modes..."



6. find 800x480, True Color (32Bit), 66Hertz and OK.



7. Got 800x480 32Bit Color displayed well.

