



FAQ / Application Note

Subject : How to use “Power ON after power failure function” to boot system without press Power button.

FAQ Document No: G10002

Date: 2010/03/31

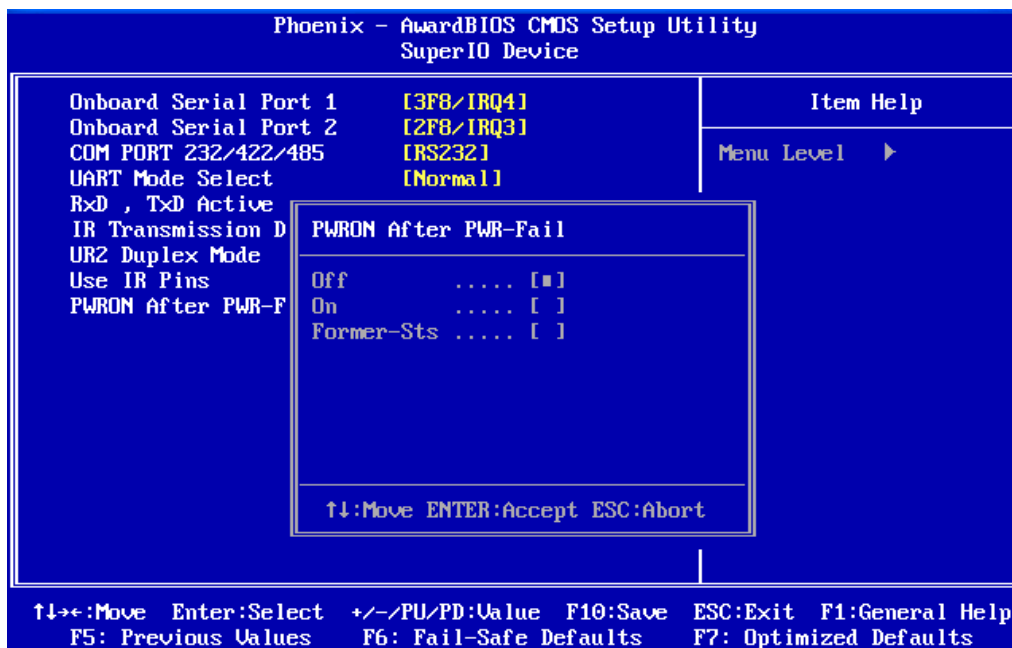
Model Name. All

Rev. A1

Category: ☒General ☐H/W ☐S/W ☐Others, Power

Purpose: The function can simulation of the AT power support.

1. Please press Delete button into BIOS setup Utility After Power ON
Integrated Peripherals→Super IO device→PWRON After PWR-Fail → setting to "ON".
(“OFF” is Factory Default)



2. The feature of Power on after power failure is as follow:
 - A. ON - When power on, the board will boot up automatically, which is the simulation of the AT power support.
 - B. OFF - When power on, the power button still need to push on to bring the board to boot up, which is the ATX power support.
 - c. Former status - When power failure happened, and after the power resumed, the board will either boot or not based on the power state before power failure.

Avalue Technology Inc.

7F, 228, Lian-Cheng Road, Chung Ho City, Taipei, Taiwan R.O.C.

www.avalue.com.tw
sales@avalue.com.tw
Tel: +886-2-82262345
Fax: +886-2-82262777

Avalue Europe
sales.europe@avalue.com.tw
Tel: +45-7025-0310
Fax: +45-4975-5026

Avalue USA
sales@avalue-usa.com
Tel: +1-732-578-0200
Fax: +1-732-578-0250

BCM Advanced Research
BCMSales@bcmcom.com
Tel: +1-949-470-1888
Fax: +1-949-470-0971

Avalue China
sales.china@avalue.com.cn
Tel: +86-21-5426-3399
Fax: +86-21-6495-0370