



FAQ / Application Note

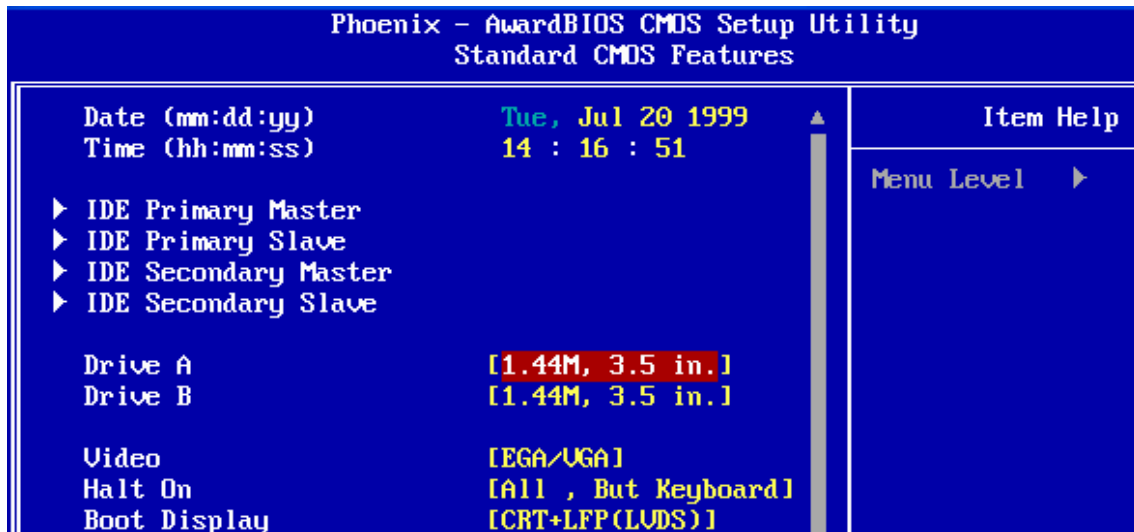
Subject : How come I chose booting from floppy, but it is still not working?	
FAQ Document No: H08010	Date: 2008/08/19
Model No. All	Rev.A1
Category: <input type="checkbox"/> General <input checked="" type="checkbox"/> H/W <input type="checkbox"/> SW <input type="checkbox"/> Others, _____	
Purpose : Enable Floppy setting in BIOS.	

First of all, if you confirm there is no problem on your cable and floppy. Then check BIOS item in advance.

In "Standard CMOS Features"

→ check if "Drive A" or "Driver B" has been set up as "None".

If YES, please select the proper setting for "Drive A" or "Drive B" item.



In "Advanced BIOS Features",

→ for old model product, please check if "Boot Sequence" has been set as "A,C,SCSI"

→ for new model, please check if "First Boot Device" has been set as "Floppy".

→ "Boot floppy seek", remember to "enable" this item



ROM PCI/ISA BIOS (2A434E09) BIOS FEATURES SETUP AWARD SOFTWARE, INC.			
Virus Warning	: Disabled	Video BIOS Shadow	: Enabled
CPU Internal Cache	: Enabled	C8000-CBFFF Shadow	: Disabled
Quick Power On Self Test	: Disabled	CC000-CFFFF Shadow	: Disabled
Onboard LAN Boot ROM	: Disabled	D0000-D3FFF Shadow	: Disabled
Boot Sequence	: A,C,SCSI	D4000-D7FFF Shadow	: Disabled
Swap Floppy Drive	: Disabled	D8000-DBFFF Shadow	: Disabled
Boot Up Floppy Seek	: Enabled	DC000-DFFFF Shadow	: Disabled
Boot Up NumLock Status	: On	Cyrix 6x86/MII CPUID	: Enabled
Boot Up System Speed	: High		
Gate A20 Option	: Fast		
Memory Parity Check	: Enabled		

Phoenix - AwardBIOS CMOS Setup Utility Advanced BIOS Features		
▶ CPU Feature	[Press Enter]	Item Help
Virus Warning	[Disabled]	Menu Level ▶
CPU L1 & L2 Cache	[Enabled]	Select Your Boot Device Priority
CPU L3 Cache	[Enabled]	
Quick Power On Self Test	[Enabled]	
First Boot Device	[Floppy]	
Second Boot Device	[CDROM]	
Third Boot Device	[Floppy]	
Boot Other Device	[Enabled]	
Swap Floppy Drive	[Disabled]	
Boot Up Floppy Seek	[Disabled]	
Boot Up NumLock Status	[On]	
Gate A20 Option	[Fast]	
TypeMatic Rate Setting	[Disabled]	

In "Integrated Peripherals" (or sub manu "SuperIO Device")

→ set "Onboard FDD Controller" as "Enable"

Phoenix - AwardBIOS CMOS Setup Utility SuperIO Device		
Onboard FDC Controller	[Enabled]	Item Help
Onboard Serial Port 1	[3F8/IRQ4]	Menu Level ▶▶
Onboard Serial Port 2	[2F8/IRQ3]	
UART Mode Select	[Normal]	