

FAQ / Application Note

| | |
|----------------------------------------------------------------------------------------------------------------------------------------------------------------------------------|-------------------------|
| Subject : How to Enable ECM-3610 Wake up On LAN? | |
| FAQ Document No: H08006 | Date: 2008/08/11 |
| Model No. ECM-3610 | Rev. A1 |
| Category: <input type="checkbox"/> General <input checked="" type="checkbox"/> H/W <input type="checkbox"/> S/W <input type="checkbox"/> Others, <u>I/O Interface-LAN</u> | |
| Purpose : How to enable the Wake up On LAN's feature on ECM-3610? | |

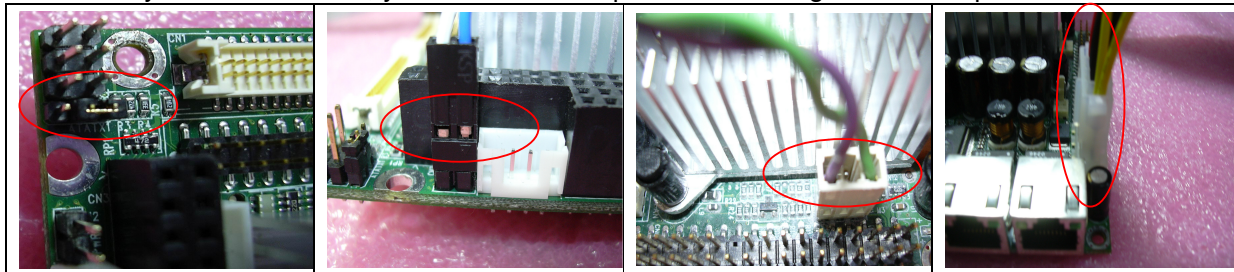
Wake-on-LAN is a technology which allows an LAN adapter to wake a machine when a special MAGIC PACKET frame is received on the network, the following procedure will show you how to enable this feature on ECM-3610 board.

Procedures:

A. ATX Power supply and jumper setting

Before you try to wake up the system VIA LAN adapter, you have to change the system power supply with ATX mode, using special cable to connect the board with ATX power supply to provide the system 5VSB and PS_ON signal, also make sure the onboard jumper setup is correct,

1. When you turn on before, you must use ATX power and change some setup.

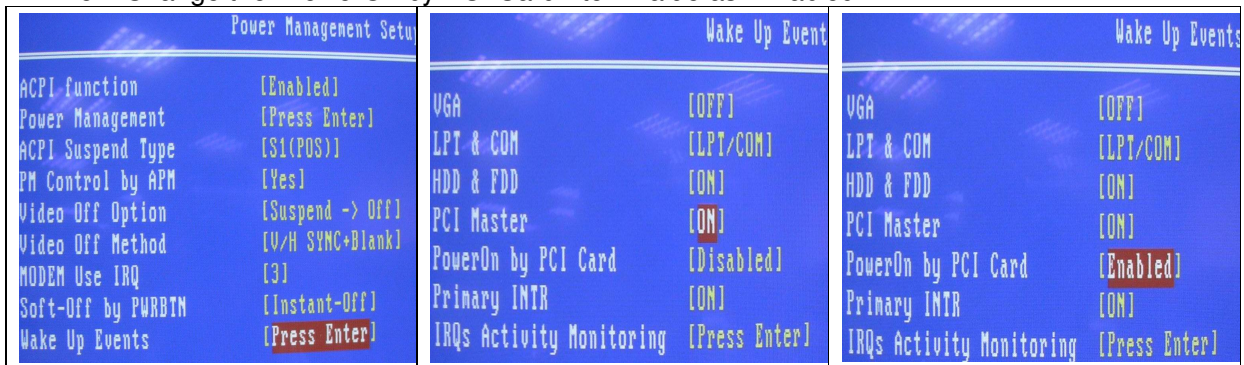


- A: ATATX Pin2-3 closed
- B: J2 (ATX soft power-bottom)
- C: J1 (ATX power connector)
- D: PWR2 (power connector)

B. System BIOS Setup

There are some CMOS Setup items need to be changed before you use Wake-On-LAN function.

1. Enter BIOS CMOS Setup
2. Enter "Power Management Setup" screen
3. Enter "Wake Up Events" sub-Item
4. Change the "PCI Master" Item value as "ON"
5. Change the "PowerOn by PCI Card" Item value as "Enabled"



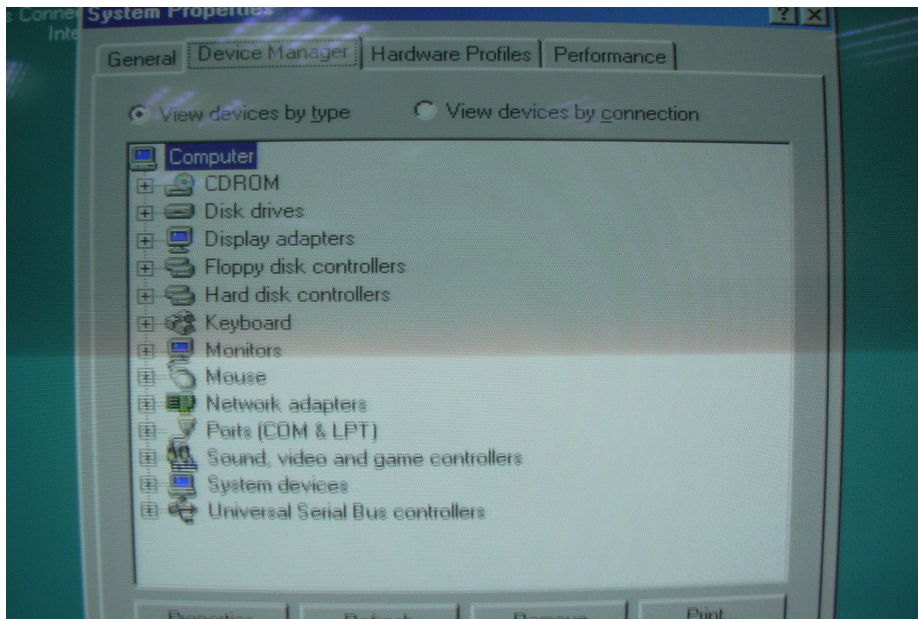
E

F

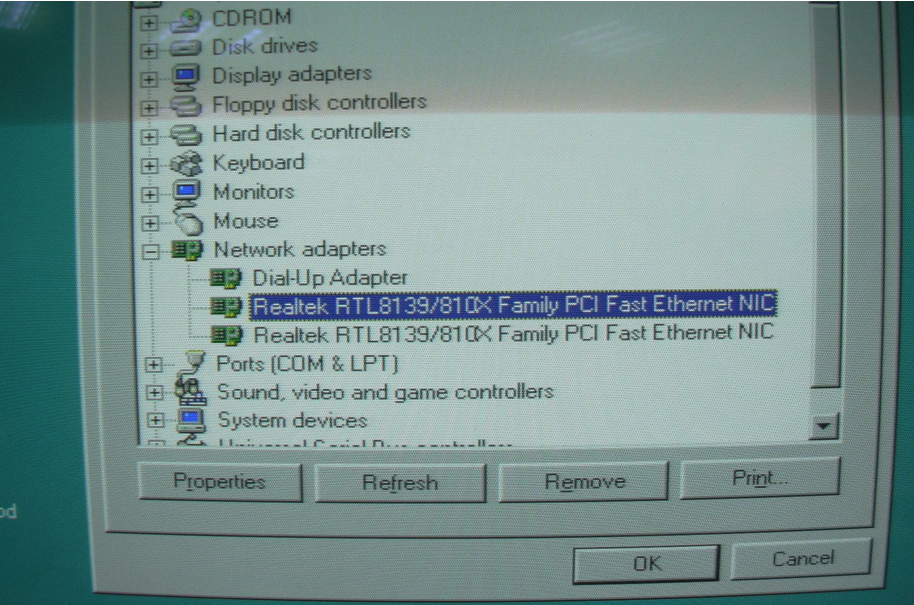
G

C. Windows LAN Driver Setup

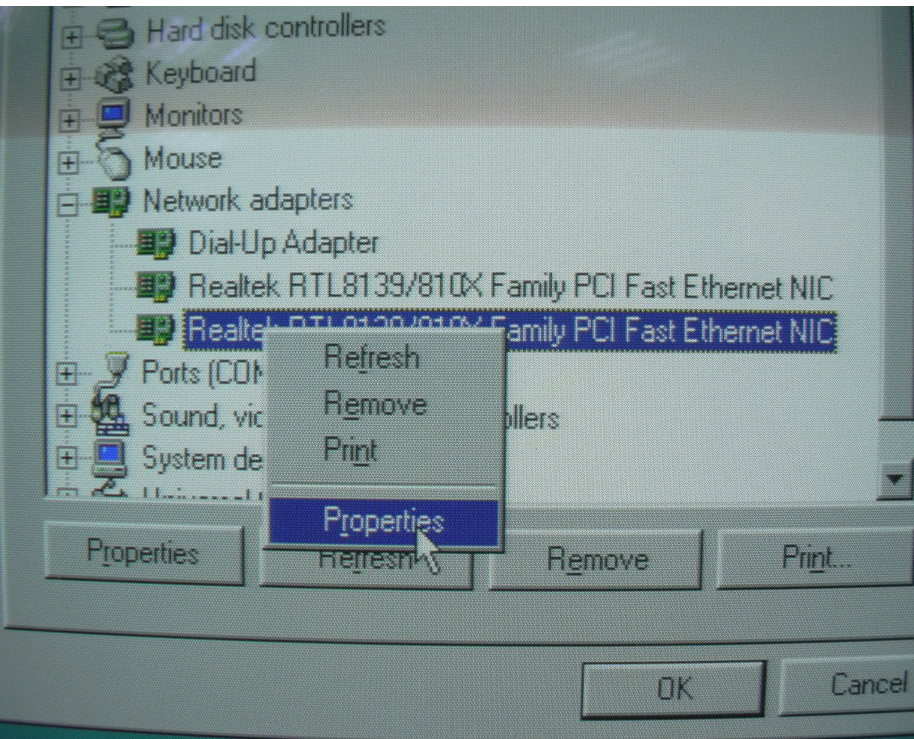
When you into O.S to enter "Device Management"



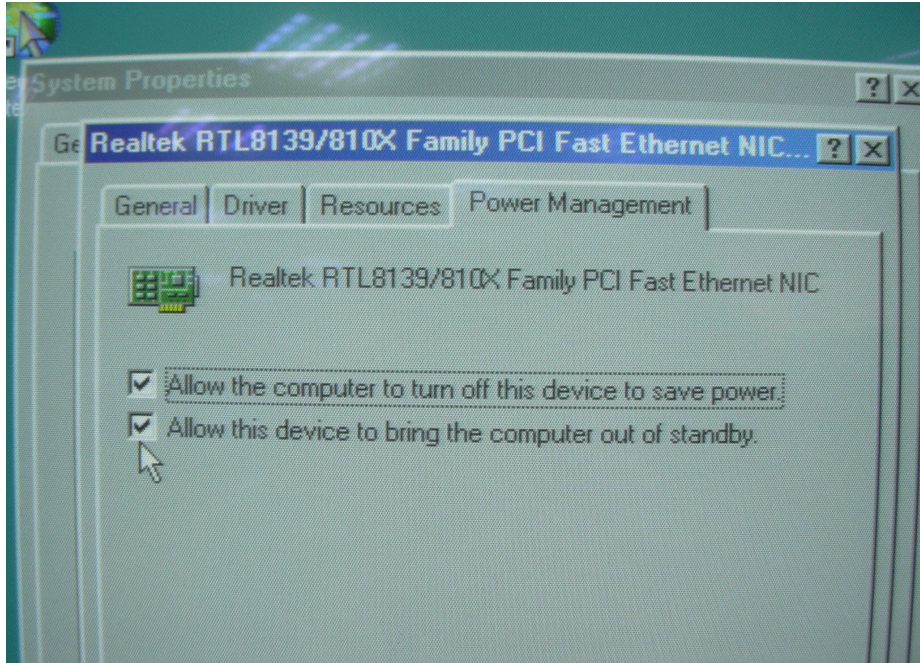
Under Network adapters, you will find "LAN Device"



Click right button, you will find **“Properties”**



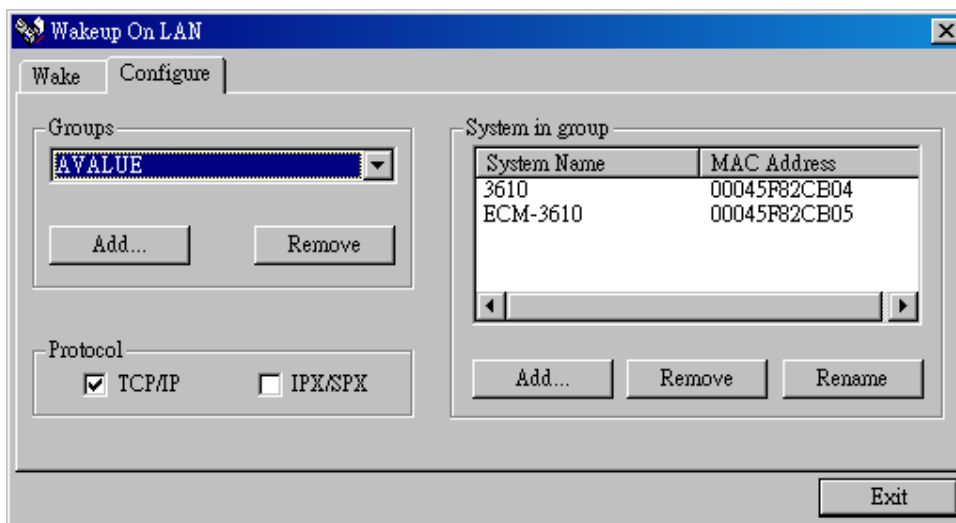
When you enter Properties you will find **“Power Management”**
Please select below two items.



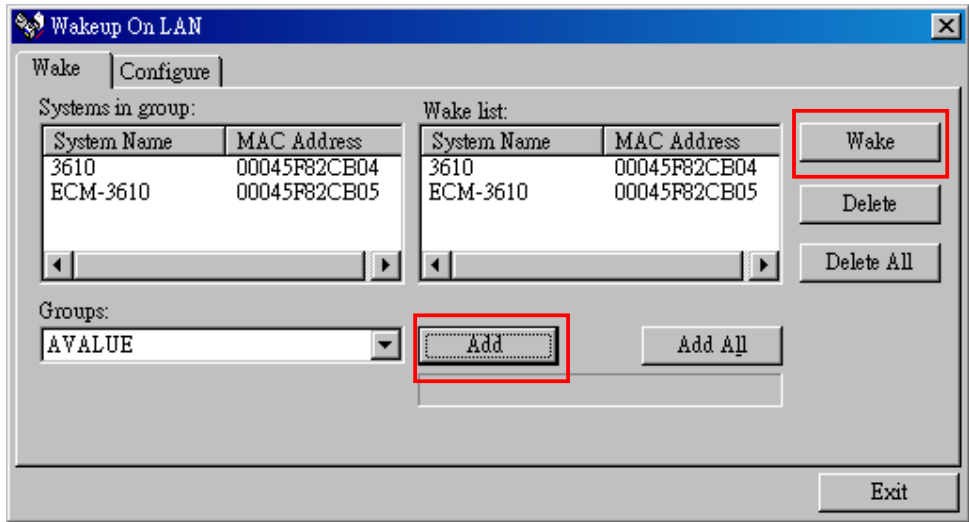
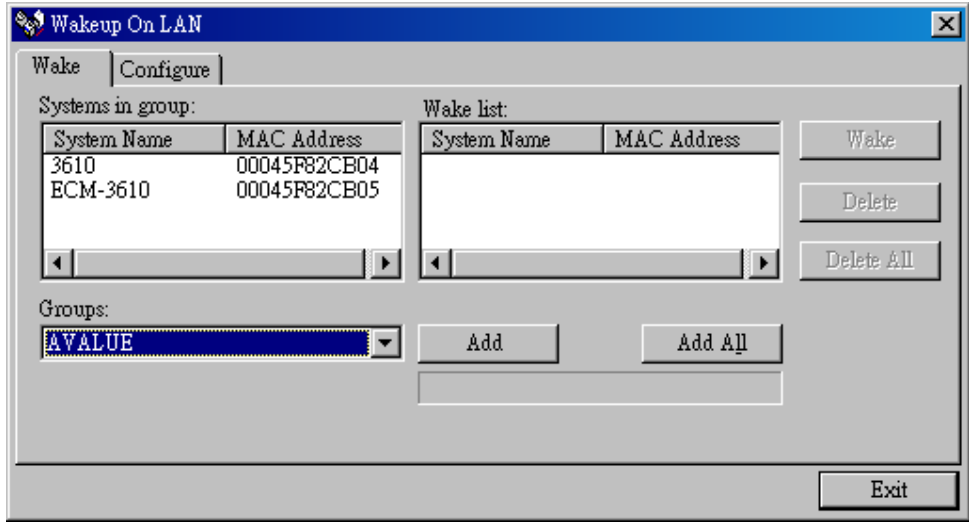
on **other computer**, when you over above setting on ECM-3610.



After you setup this utility please check ECM-3610's Winipcfg to know MAC Address. Run this utility in **other computer**. They need the same Domain. Enter Configure, key-in MAC Address and add it to **"System in group"**.



Over you key-in to add it to **"Wake list"**.



Over all setting please plug-in LAN, power-off your ECM-3610, and press “**Wake**” key.