

Touch the FUTURE



- ▶ Applied Computing Platform
- ▶ POS and KIOSK
- ▶ Rugged Industrial Panel PC
- ▶ Infotainment Solution
- ▶ Medical Terminals
- ▶ Automation Terminals
- ▶ Media & Digital Signage Terminals
- ▶ RISC Platform



1

Rugged Touch Panel PC LPC Series

CH1-LPC Series

LPC-0809	8" Intel® Atom™ SoC Processor E3845 Fanless Rugged Touch Panel PC
LPC-1009	10.4" Intel® Atom™ SoC Processor E3845 Fanless Rugged Touch Panel PC
LPC-1209	12.1" Intel® Atom™ SoC Processor E3845 Fanless Rugged Touch Panel PC
LPC-1509	15" Intel® Atom™ SoC Processor E3845 Fanless Rugged Touch Panel PC
LPC-1709	17" Intel® Atom™ SoC Processor E3845 Fanless Rugged Touch Panel PC
LPC-1231	12.1" Intel® Celeron® SoC N3000 family Processor Fanless Rugged Touch Panel PC
LPC-1531	15" Intel® Celeron® SoC N3000 family Processor Fanless Rugged Touch Panel PC
LPC-1232	12.1" 6th Gen Intel® ULT Core™ Processor i7/i5/i3 Fanless Rugged Touch Panel PC
LPC-1532	15" 6th Gen Intel® ULT Core™ Processor i7/i5/i3 Fanless Rugged Touch Panel PC



LPC-0809

8" Intel® Atom™ SoC Processor E3845 Fanless Rugged Touch Panel PC

- > 8" SVGA TFT Touch Panel PC
- > 5-wire Resistive Touch Screen
- > Intel® Atom™ E3845 1.91GHz CPU
- > HDMI, Audio
- > Dual Gigabit Ethernet, Optional WiFi Module
- > 1 CF, 2 COM, 4 USB
- > No HDD Support
- > Fanless
- > Wide Range Voltage Input +12V ~ +26V
- > IP65 Compliant Front Panel
- > VESA Compliance
- > Rugged Environment Applicable

+ Spec

System	
Processor	Intel® Atom™ E3845 4-Core 1.91GHz processor
System Chipset	Intel® Valleyview SoC
System Memory	1 x 204-Pin DDR3L 1333MHz SO-DIMM up to 8 GB
I/O Chip	EC ITE IT8528E
Watchdog Timer	H/W Reset, 1sec. ~ 65535sec. and 1sec./step
H/W Status Monitor	Monitoring SYSTEM Temperature and Voltage with Auto Throttling Control
SBC	ECM-BYT
Expansion	
Expansion	1 x Mini PCIe Support mSATA
Storage	
Storage	1 x CompactFlash Type VIII Socket
I/O	
USB	1 x USB 3.0 3 x USB 2.0
Com Port	1 x RS-232 1 x RS-232/422/485
Other	1 x HDMI
Display	
Chipset	Intel® Valleyview SoC integrated Graphics Supports dual display
Resolution	HDMI: Max. resolution 1920x1200@ 60Hz
Audio	
Chipset	Realtek ALC892
Audio Interface	Line-Out
Ethernet	
Chipset	2 x Intel® I211AT
Ethernet Interface	10/100/1000 Base-Tx GbE compatible
Lan Port	2 x RJ-45
Mechanical & Environmental	
Operating Temp	0°C ~ 40°C (32°F ~ 104°F)
Storage Temp	-20°C ~ 60°C (-4°F ~ 140°F)
Operating Humidity	0% ~ 90% Relative Humidity, Non-condensing
Weight	1.5Kgs
Dimension (L x W x H)	202.5 x 159.5 x 46.5 mm
Vibration Test	With SSD/mSATA : 1.5Grms, IEC 60068-2-64, Random, 5 ~ 500Hz, 30min/axis
Shock Test	With CF/SSD : 10Grms, IEC 60068-2-27, Half Sine, 11ms
System Fan	Fanless
Construction - Front	Silver Aluminum
Construction - Rear	Black
Certifications	
Certification Information	CE / FCC Class B
Software Support	
OS Information	Win 7 Win 8 Linux
Power Requirement	
Power Connector	Lockable DC Jack
Power Requirement	+12V ~ +26V
Power Mode	AT/ATX (ATX is default setting)



Adapter	Input: 100 ~ 240Vac/ 50 ~ 60Hz Output: 60W Adapter (12V @ 5A Adapter)
Panel	
LCD Size	8", 4:3
Display Type	SVGA
Resolution	800x600
Pixel pitch	0.0675mm(H) x 0.2025mm(V)
Luminance	500 cd/m2
Contrast ratio	500
Viewing angle	50(U), 70(D), 70(L), 70 (R)
Response time	25 ms
Backlight	LED
Touch Type	5 Wires resistive
Touch Light Transmission	80%
Touch Controller	USB touch (EETI)

+ Ordering

LPC-0809-384-A1R

Intel Atom E3845 1.91GHz/4G DDR3L/2GLAN/2COM/4USB/12~26V input/12V Adaptor

ACC-WIFI-USB-14R

USB WiFi 802.11 b/g/n Module w/ Antenna, Cable USB WiFi 802.11 b/g/n Module w/ Antenna, Cable

ACC-ARM-D8R

ARM FC8888SB VESA standard:75*75&100*100

ACC-ARM-D15R

VESA STAND, 75x75 & 100x100 mm

ACC-ARM-D22R

VESA STAND, 75x75 & 100x100 mm

ACC-ARM-D29R

ARM A800B VESA standard 75*75 & 100*100mm

ACC-CF-XX

CompactFlash Card Series

(xx=Capacity, Capacity Option: 128, 256, 512 MB, 1, 2, 4, 8 GB)



LPC-1009

10.4" Intel® Atom™ SoC Processor E3845 Fanless Rugged Touch Panel PC

- > Intel® Atom™ E3845 1.91GHz CPU
- > One 204-pin DDR3L SODIMM Socket Supports Up to 8GB DDR3L 1066/1333 SDRAM
- > 1 CF, 2 USB, 1 COM
- > Dual Intel I210IT Gigabit LAN
- > Wide Voltage +12V ~ +26V Input, ErP Power
- > Backlight Controlled by PWM
- > IP65 Compliant Front Panel
- > Timer-Power-On

Spec

System	
Processor	Intel® Atom™ E3845 4-Core 1.91GHz processor
System Chipset	Intel® Valleyview SoC
System Memory	1 x 204-Pin DDR3L 1333MHz SO-DIMM up to 8 GB
I/O Chip	EC ITE IT8528E
Watchdog Timer	H/W Reset, 1sec. ~ 65535sec./1sec.step
H/W Status Monitor	Monitoring SYSTEM Temperature and Voltage with Auto Throttling Control
SBC	EBM-BYT
Expansion	
Expansion	1 x Mini PCIe Support mSATA 1 x Mini PCIe Supports SIM Card
Storage	
Storage	1 x CompactFlash Type III Socket 1 x 2.5" Drive Bay
I/O	
USB	1 x USB 3.0 1 x USB 2.0
SATA	1 x SATA II
Com Port	1 x RS-232/422/485 (BIOS)
Other	1 x HDMI 1 x Knockouts for Antenna Mounting
Display	
Chipset	Intel® Valleyview SoC integrated Graphics Supports dual display
Resolution	HDMI: Max. resolution 1920x1200@60Hz
Audio	
Chipset	Realtek ALC892
Audio Interface	Line-Out
Ethernet	
Chipset	2 x Intel® I210IT
Ethernet Interface	10/100/1000 Base-Tx GbE compatible
Lan Port	2 x RJ-45
Mechanical & Environmental	
Operating Temp	-20°C ~ 60°C (-4°F ~ 140°F)
Storage Temp	-30°C ~ 70°C (-22°F ~ 158°F)
Operating Humidity	0% ~ 90% Relative Humidity, Non-condensing
Weight	2.11Kgs
Dimension (L x W x H)	259 x 196 x 41 mm
Vibration Test	With SSD/mSATA : 1.5Grms, IEC 60068-2-64, Random, 5 ~ 500Hz, 30min/axis
Shock Test	With CF/SSD : 10Grms, IEC 60068-2-27, Half Sine, 11ms
System Fan	Fanless
Construction - Front	Silver Aluminum
Construction - Rear	Black
Certifications	
Certification Information	CE FCC Class B
Software Support	
OS Information	Win 7 Win 8 Linux
Power Requirement	



Power Connector	Lockable DC Jack
Power Requirement	+12V ~ +26V
Power Mode	AT/ATX (ATX is default setting)
Adapter	Input: 100 ~ 240Vac/ 50 ~ 60Hz Output: 60W Adapter (12V @ 5A Adapter)
Panel	
LCD Size	10.4", 4:3
Display Type	XGA
Resolution	1024x768
Pixel pitch	0.0685mm(H) x 0.2055mm(V)
Luminance	500 cd/m2
Contrast ratio	1200
Viewing angle	88 (U), 88 (D), 88 (L), 88 (R)
Response time	25 ms
Backlight	LED
Touch Type	5 Wires resistive
Touch Light Transmission	80%
Touch Controller	Onboard USB touch (EETI)

+ Ordering

LPC-1009-384-B1R
Intel Atom E3845 1.91GHz CPU/4G DDR3L/2GLAN/COM/12~26V input/12V Adaptor

ACC-LPC-WiFiUSB-3R
USB WiFi 802.11 b/g/n Module w/ Antenna, Cable

ACC-ARM-D22R
VESA STAND, 75x75 & 100x100 mm

ACC-ARM-D29R
ARM A800B VESA standard 75*75 & 100*100mm

ACC-LPC-10-PMT-02R
Back Panel Mount Kit for LPC-10 Series, w/IP-65



LPC-1209

12.1" Intel® Atom™ SoC Processor E3845 Fanless Rugged Touch Panel PC

- > Intel® Atom™ E3845 1.91GHz CPU
- > One 204-pin DDR3L SODIMM Socket Supports Up to 8GB DDR3L 1333 SDRAM
- > 1 CF, 2 USB, 1 COM
- > Dual Intel I210IT Gigabit LAN
- > Wide Voltage +12V ~ +26V Input, ErP Power
- > Backlight Controlled by PWM
- > IP65 Compliant Front Panel
- > Timer-Power-On

Spec

System	
Processor	Intel® Atom™ E3845 4-Core 1.91GHz processor
System Memory	1 x 204-Pin DDR3L 1333MHz SO-DIMM up to 8 GB
I/O Chip	EC ITE IT8528E
Watchdog Timer	H/W Reset, 1sec. ~ 65535sec./1sec.step
H/W Status Monitor	Monitoring SYSTEM Temperature and Voltage with Auto Throttling Control
SBC	EBM-BYT
Expansion	
Expansion	1 x Mini PCIe Support mSATA 1 x Mini PCIe Supports SIM Card
Storage	
Storage	1 x CompactFlash Type VIII Socket 1 x 2.5" Drive Bay
I/O	
USB	1 x USB 3.0 1 x USB 2.0
SATA	1 x SATA II
Com Port	1 x RS-232/422/485 (BIOS)
Other	1 x HDMI 1 x Knockouts for Antenna Mounting
Display	
Chipset	Intel® Valleyview SoC integrated Graphics Supports dual display
Resolution	HDMI:Max. resolution 1920x1200@ 60Hz
Audio	
Chipset	Realtek ALC892
Audio Interface	Line-Out
Ethernet	
Chipset	2 x Intel® I210IT
Ethernet Interface	10/100/1000 Base-Tx GbE compatible
Lan Port	2 x RJ-45
Mechanical & Environmental	
Operating Temp	-20°C ~ 60°C (-4°F ~ 140°F)
Storage Temp	-30°C ~ 70°C (-22°F ~ 158°F)
Operating Humidity	0% ~ 90% Relative Humidity, Non-condensing
Weight	2.84Kgs
Dimension (L x W x H)	283 x 222 x 45 mm
Vibration Test	With SSD/mSATA : 1.5Grms, IEC 60068-2-64, Random, 5 ~ 500Hz, 30min/axis
Shock Test	With CF/SSD : 10Grms, IEC 60068-2-27, Half Sine, 11ms
System Fan	Fanless
Construction - Front	Silver Aluminum
Construction - Rear	Black
Certifications	
Certification Information	CE / FCC Class B
Software Support	
OS Information	Win 7 Win 8 Linux
Power Requirement	
Power Connector	Lockable DC Jack



Power Requirement	+12V ~ +26V
Power Mode	AT/ATX (ATX is default setting)
Adapter	Input: 100 ~ 240Vac/ 50 ~ 60Hz Output: 60W Adapter (12V @ 5A Adapter)
Panel	
LCD Size	12.1", 4:3
Display Type	XGA
Resolution	1024 x 768
Pixel pitch	0.240mm(H) x 0.240mm(V)
Luminance	600 cd/m2
Contrast ratio	700
Viewing angle	70 (U), 70 (D), 80 (L), 80 (R)
Response time	16 ms
Backlight	LED
Touch Type	5 Wires resistive
Touch Light Transmission	80%
Touch Controller	Onboard USB touch (EETI)

+ Ordering

LPC-1209-384-B1R
Intel Atom E3845 1.91GHz CPU/4G DDR3L/2GLAN/COM/12~26V input/12V Adaptor

ACC-LPC-WiFiUSB-3R
USB WiFi 802.11 b/g/n Module w/ Antenna, Cable

ACC-ARM-D22R
VESA STAND, 75x75 & 100x100 mm

ACC-ARM-D29R
ARM A800B VESA standard 75*75 & 100*100mm

ACC-LPC-12-PMT-02R
Back Panel Mount Kit for LPC-12 Series, w/IP-65



LPC-1509

15" Intel® Atom™ SoC Processor E3845 Fanless Rugged Touch Panel PC

- > Intel® Atom™ E3845 1.91GHz CPU
- > One 204-pin DDR3L SODIMM Socket Supports Up to 8GB DDR3L 1333 SDRAM
- > 1 CF, 2 USB, 1 COM
- > Dual Intel I210IT Gigabit LAN
- > Wide Voltage +12V ~ +26V Input, ErP Power
- > Backlight Controlled by PWM
- > IP65 Compliant Front Panel
- > Timer-Power-On

Spec

System	
Processor	Intel® Atom™ E3845 4-Core 1.91GHz processor
System Chipset	Intel® Valleyview SoC
System Memory	1 x 204-Pin DDR3L 1333MHz SO-DIMM up to 8 GB
I/O Chip	EC ITE IT8528E
Watchdog Timer	H/W Reset, 1sec. ~ 65535sec./1sec.step
H/W Status Monitor	Monitoring SYSTEM Temperature and Voltage with Auto Throttling Control
SBC	EBM-BYT
Expansion	
Expansion	1 x Mini PCIe Support mSATA 1 x Mini PCIe Supports SIM Card
Storage	
Storage	1 x CompactFlash Type III Socket 1 x 2.5" Drive Bay
I/O	
USB	1 x USB 3.0 1 x USB 2.0
SATA	1 x SATA II
Com Port	1 x RS-232/422/485 (BIOS)
Other	1 x HDMI 1 x Knockouts for Antenna Mounting
Display	
Chipset	Intel® Valleyview SoC integrated Graphics Supports dual display
Resolution	HDMI:Max. resolution 1920x1200@ 60Hz
Audio	
Chipset	Realtek ALC892
Audio Interface	Line-Out
Ethernet	
Chipset	2 x Intel® I210IT
Ethernet Interface	10/100/1000 Base-Tx GbE compatible
Lan Port	2 x RJ-45
Mechanical & Environmental	
Operating Temp	-20°C ~ 60°C (-4°F ~ 140°F)
Storage Temp	-30°C ~ 70°C (-22°F ~ 158°F)
Operating Humidity	0% ~ 90% Relative Humidity, Non-condensing
Weight	4.2Kgs
Dimension (L x W x H)	350 x 273.9 x 53.1 mm
Vibration Test	With SSD/mSATA : 1.5Gms, IEC 60068-2-64, Random, 5 ~ 500Hz, 30min/axis
Shock Test	With CF/SSD : 10Gms, IEC 60068-2-27, Half Sine, 11ms
System Fan	Fanless
Construction - Front	Silver Aluminum
Construction - Rear	Black
Certifications	
Certification Information	CE / FCC Class B
Software Support	
OS Information	Win 7 Win 8 Linux
Power Requirement	



Power Connector	Lockable DC Jack
Power Requirement	+12V ~ +26V
Power Mode	AT/ATX (ATX is default setting)
Adapter	Input: 100 ~ 240Vac/ 50 ~ 60Hz Output: 60W Adapter (12V @ 5A Adapter)
Panel	
LCD Size	15", 4:3
Display Type	XGA
Resolution	1024x768
Pixel pitch	0.297mm(H) x 0.297mm(V)
Luminance	400 cd/m2
Contrast ratio	700
Viewing angle	70 (U), 70 (D), 80 (L), 80 (R)
Response time	16 ms
Backlight	LED
Touch Type	5 Wires resistive
Touch Light Transmission	80%
Touch Controller	Onboard USB touch (EETI)

+ Ordering

LPC-1509-384-A1R
Intel Atom E3845 1.91GHz CPU/4G DDR3L/2GLAN/COM/12~26V input/12V Adaptor

ACC-LPC-WiFiUSB-4R
USB WiFi 802.11 b/g/n Module w/ Antenna, Cable

ACC-ARM-D1R
VESA STAND, 75mm & 100 mm

ACC-ARM-D19R
VESA STAND, 75mm & 100 mm

ACC-LPC-15-PMT-02R
Back Panel Mount Kit for LPC-15 Series, w/IP-65



LPC-1709

17" Intel® Atom™ SoC Processor E3845 Fanless Rugged Touch Panel PC

- > Intel® Atom™ E3845 1.91GHz CPU
- > One 204-pin DDR3L SODIMM Socket Supports Up to 8GB DDR3L 1333 SDRAM
- > 1 CF, 2 USB, 1 COM
- > Dual Intel I210IT Gigabit LAN
- > Wide Voltage +12V ~ +26V Input, ErP Power
- > Backlight Controlled by PWM
- > IP65 Compliant Front Panel
- > Timer-Power-On

+ Spec

System	
Processor	Intel® Atom™ E3845 4-Core 1.91GHz processor
System Memory	1 x 204-Pin DDR3L 1333MHz SO-DIMM up to 8 GB
I/O Chip	EC ITE IT8528E
Watchdog Timer	H/W Reset, 1sec. ~ 65535sec./1sec.step
H/W Status Monitor	Monitoring SYSTEM Temperature and Voltage with Auto Throttling Control
SBC	EBM-BYT
Expansion	
Expansion	1 x Mini PCIe Support mSATA 1 x Mini PCIe Supports SIM Card
Storage	
Storage	1 x CompactFlash Type VII Socket 1 x 2.5" Drive Bay
I/O	
USB	1 x USB 3.0 1 x USB 2.0
SATA	1 x SATA II
Com Port	1 x RS-232/422/485 (BIOS)
Other	1 x HDMI 1 x Knockouts for Antenna Mounting
Display	
Chipset	Intel® Valleyview SoC integrated Graphics Supports dual display
Resolution	HDMI:Max. resolution 1920x1200@60Hz
Audio	
Chipset	Realtek ALC892
Audio Interface	Line-Out
Ethernet	
Chipset	2 x Intel® I210IT
Ethernet Interface	10/100/1000 Base-Tx GbE compatible
Lan Port	2 x RJ-45
Mechanical & Environmental	
Operating Temp	-20°C ~ 60°C (-4°F ~ 140°F)
Storage Temp	-30°C ~ 70°C (-22°F ~ 158°F)
Operating Humidity	0% ~ 90% Relative Humidity, Non-condensing
Weight	4.2Kgs
Dimension (L x W x H)	350 x 273.9 x 53.1mm
Vibration Test	With SSD/mSATA : 1.5Grms, IEC 60068-2-64, Random, 5 ~ 500Hz, 30min/axis
Shock Test	With CF/SSD : 10Grms, IEC 60068-2-27, Half Sine, 11ms
System Fan	Fanless
Construction - Front	Silver Aluminum
Construction - Rear	Black
Certifications	
Certification Information	CE / FCC Class B
Software Support	
OS Information	Win 7 Win 8 Linux
Power Requirement	



Power Connector	Lockable DC Jack
Power Requirement	+12V ~ +26V
Power Mode	AT/ATX (ATX is default setting)
Adapter	Input: 100 ~ 240Vac/ 50 ~ 60Hz Output: 60W Adapter (12V @ 5A Adapter)
Panel	
LCD Size	17", 4:3
Display Type	SXGA
Resolution	1280x1024
Pixel pitch	0.264mm(H) x 0.264mm(V)
Luminance	350 cd/m2
Contrast ratio	800
Viewing angle	80 (U), 80 (D), 85 (L), 85 (R)
Response time	30 ms
Backlight	LED
Touch Type	5 Wires resistive
Touch Light Transmission	80%
Touch Controller	Onboard USB touch (EETI)

+ Ordering

LPC-1709-384-A1R
Intel Atom E3845 1.91GHz CPU/ 4G DDR3L/2GLAN/COM/SPK/12~26V input/12V Adaptor

ACC-LPC-WiFiUSB-4R
USB WiFi 802.11 b/g/n Module w/ Antenna, Cable

ACC-ARM-D1R
VESA STAND, 75mm & 100 mm

ACC-ARM-D19R
VESA STAND, 75mm & 100 mm

ACC-LPC-17-PMT-02R
Back Panel Mount Kit for LPC-17 Series, w/IP-65



LPC-1231

12.1" Intel® Celeron® SoC N3000 family Processor
Fanless Rugged Touch Panel PC

- > Onboard Intel® Celeron® SoC N3000 family BGA Processor
- > One 204-pin DDR3L SODIMM Socket Supports Up to 8GB DDR3L 1600 SDRAM
- > 4 USB, 2 COM
- > Dual RealTek RTL8119 Gigabit LAN
- > Wide Voltage +12V ~ +26V Input, ErP Power
- > Backlight Controlled by PWM
- > IP65 Compliant Front Panel
- > Timer-Power-On
- > TPM 1.2 Function (Optional)

Spec

System	
Processor	Intel® Pentium®/Celeron® processor
System Memory	1 x 204-Pin DDR3L 1600MHz SO-DIMM up to 8 GB
I/O Chip	Nuvoton NPCE388N
Watchdog Timer	H/W Reset, 1sec. ~ 65535sec./1sec.step
H/W Status Monitor	Monitoring SYSTEM Temperature and Voltage with Auto Throttling Control
Expansion	
Expansion	1 x Mini PCIe Support mSATA 1 x Mini PCIe Supports SIM Card
Storage	
Storage	1 x 2.5" Drive Bay 1 x Onboard eMMC (32G reserved)
I/O	
USB	4 x USB 3.0
SATA	1 x SATA III
Com Port	2 x RS-232/422/485 (Factory Optional)
Other	1 x HDMI 1 x Knockouts for Antenna Mounting
Display	
Chipset	Intel® Braswell SoC integrated Graphics Supports dual display
Resolution	HDMI:Max. resolution 1920x1200 @ 60Hz
Audio	
Chipset	Realtek ALC233 supports 2.1-CH
Audio Interface	Line-Out
Ethernet	
Chipset	2 x Realtek RTL8119
Ethernet Interface	10/100/1000 Base-Tx GbE compatible
Lan Port	2 x RJ-45
Mechanical & Environmental	
Power Type	AT/ATX (ATX is default setting)
Operating Temp	-10°C ~ 50°C
Storage Temp	-20°C ~ 60°C
Operating Humidity	0% ~ 90% Relative Humidity, Non-condensing
Weight	2.84 Kgs
Mounting Kit	Wall / Stand / VESA 75mm x 75mm
Dimension (L x W x H)	283 x 222 x 45 mm
Vibration Test	With SSD/mSATA : 1.5Grms, IEC 60068-2-64, Random, 5 ~ 500Hz, 30min/axis
Shock Test	With CF/SSD : 10Grms, IEC 60068-2-27, Half Sine, 11ms
System Fan	Fanless
Construction - Front	Silver Aluminum
Construction - Rear	Black
Certifications	
Certification Information	CE FCC Class B
Software Support	
OS Information	Win 7 Win 8 Linux
Power Requirement	



Power Connector	Lockable DC Jack
Power Requirement	+12V ~ +26V
ACPI	Single Power ATX Support S0, S3, S4, S5 ACPI 3.0 Compliant
Adapter	Input: 100 ~ 240Vac/ 50 ~ 60Hz Output: 60W Adapter (12V @ 5A Adapter) AC-DC Adapter
Panel	
LCD Size	12.1", 4:3
Display Type	XGA
Resolution	1024 x 768
Pixel pitch	0.240mm(H) x 0.240mm(V)
Luminance	600 cd/m ²
Contrast ratio	700
Viewing angle	70 (U), 70 (D), 80 (L), 80 (R)
Response time	16 ms
Backlight	LED
Touch Type	5 Wires resistive
Touch Light Transmission	80%
Touch Controller	Onboard USB touch (EETI)

Ordering

LPC-1231
Intel Atom™ SoC N3000 family Processor/4G DDR3L/2GLAN/COM/12~26V input/12V Adaptor

ACC-LPC-
WiFiUSB-3R USB WiFi 802.11 b/g/n Module w/ Antenna, Cable

ACC-ARM-D22R
VESA STAND, 75x75 & 100x100 mm

ACC-ARM-D29R
ARM A800B VESA standard 75*75 & 100*100mm

ACC-LPC-12-PMT-02R
Back Panel Mount Kit for LPC-12 Series, w/IP-65



LPC-1531

15" Intel® Celeron® SoC N3000 family Processor
Fanless Rugged Touch Panel PC

- > Onboard Intel® Celeron® SoC N3000 family BGA Processor
- > One 204-pin DDR3L SODIMM Socket Supports Up to 8GB DDR3L 1600 SDRAM
- > 4 USB, 2 COM
- > Dual RealTek RTL8119 Gigabit LAN
- > Wide Voltage +12V ~ +26V Input, ErP Power
- > Backlight Controlled by PWM
- > IP65 Compliant Front Panel
- > Timer-Power-On
- > TPM 1.2 Function (Optional)

+ Spec

System	
Processor	Intel® Pentium®/Celeron® processor
System Memory	1 x 204-Pin DDR3L 1600MHz SO-DIMM up to 8 GB
I/O Chip	Nuvoton NPCE388N
Watchdog Timer	H/W Reset, 1sec. ~ 65535sec./1sec.step
H/W Status Monitor	Monitoring SYSTEM Temperature and Voltage with Auto Throttling Control
Expansion	
Expansion	1 x Mini PCIe Support mSATA 1 x Mini PCIe Supports SIM Card
Storage	
Storage	1 x 2.5" Drive Bay 1 x Onboard eMMC (32G reserved)
I/O	
USB	4 x USB 3.0
SATA	1 x SATA III
Com Port	2 x RS-232/422/485 (Factory Optional)
Other	1 x HDMI 1 x Knockouts for Antenna Mounting
Display	
Chipset	Intel® Braswell SoC integrated Graphics Supports dual display
Resolution	HDMI:Max. resolution 1920x1200 @ 60Hz
Audio	
Chipset	Realtek ALC233 supports 2.1-CH
Audio Interface	Line-Out
Speaker Output	2 x 1W
Ethernet	
Chipset	2 x Realtek RTL8119
Ethernet Interface	10/100/1000 Base-Tx GbE compatible
Lan Port	2 x RJ-45
Mechanical & Environmental	
Power Type	AT/ATX (ATX is default setting)
Operating Temp	-10°C ~ 50°C
Storage Temp	-20°C ~ 60°C
Operating Humidity	0% ~ 90% Relative Humidity, Non-condensing
Weight	2.84 Kgs
Mounting Kit	Wall / Stand / VESA 75mm x 75mm
Dimension (L x W x H)	283 x 222 x 45 mm
Vibration Test	With SSD/mSATA : 1.5Grms, IEC 60068-2-64, Random, 5 ~ 500Hz, 30min/axis
Shock Test	With CF/SSD : 10Grms, IEC 60068-2-27, Half Sine, 11ms
System Fan	Fanless
Construction - Front	Silver Aluminum
Construction - Rear	Black
Certifications	
Certification Information	CE FCC Class B
Software Support	
OS Information	Win 7 Win 8 Linux
Power Requirement	



Power Connector	Lockable DC Jack
Power Requirement	+12V ~ +26V
ACPI	Single Power ATX Support S0, S3, S4, S5 ACPI 3.0 Compliant
Adapter	Input: 100 ~ 240Vac/ 50 ~ 60Hz Output: 60W Adapter (12V @ 5A Adapter) AC-DC Adapter
Panel	
LCD Size	15", 4:3
Display Type	XGA
Resolution	1024 x 768
Pixel pitch	0.297mm(H) x 0.297mm(V)
Luminance	400 cd/m ²
Contrast ratio	700
Viewing angle	70 (U), 70 (D), 80 (L), 80 (R)
Response time	16 ms
Backlight	LED
Touch Type	5 Wires resistive
Touch Light Transmission	80%
Touch Controller	Onboard USB touch (EETI)

Ordering

LPC-1531
Intel Atom™ SoC N3000 family Processor/4G DDR3L/2GLAN/COM/12~26V input/12V Adaptor

ACC-LPC-WiFiUSB-4R
USB WiFi 802.11 b/g/n Module w/ Antenna, Cable

ACC-ARM-D1R
VESA STAND, 75mm & 100 mm

ACC-ARM-D19R
VESA STAND, 75mm & 100 mm

ACC-LPC-15-PMT-02R
Back Panel Mount Kit for LPC-15 Series, w/IP-65



LPC-1232

12.1" 6th Gen Intel® ULT Core™ Processor i7/i5/i3 Fanless Rugged Touch Panel PC

- > 6th Gen Intel® Core™ SoC ULT Processor i7/i5/i3 processor
- > Two 260-pin DDR4 SODIMM (non ECC) support up to 32GB (non ECC only)
- > 4 USB, 2 COM
- > 2 x Intel Gigabit Ethernet, 5.1 CH Audio
- > Wide Voltage +12V ~ +26V Input, ErP Power
- > Backlight Controlled by PWM
- > IP65 Compliant Front Panel
- > Timer-Power-On
- > TPM 2.0 & TPM 1.2 (Optional)

Spec

System	
Processor	6th Gen Intel® Core™ i5-6300U, 2-Core, 2.4GHz processor
System Memory	2 x 260-Pin DDR4 2133MHz SO-DIMM
I/O Chip	EC ITE IT8528E
Watchdog Timer	H/W Reset, 1sec. ~ 65535min. and 1sec. or 1min./step
H/W Status Monitor	Monitoring System Temperature and Voltage with Auto Throttling Control
Board	EBM-SKLU
Expansion	
Expansion	1 x Mini PCIe Support mSATA 1 x Mini PCIe Supports SIM Card
Storage	
Storage	1 x 2.5" Drive Bay
I/O	
USB	4 x USB 3.0
SATA	1 x SATA III
Com Port	1 x RS-232/422/485 (Factory Optional)
Other	1 x HDMI Output 1 x Knockouts for Antenna Mounting
Display	
Chipset	Intel® Skylake SoC integrated Graphics Supports dual display
Resolution	HDMI: Max. resolution 4096x2160 @ 24Hz
Audio	
Chipset	Realtek ALC233
Audio Interface	Line-Out
Ethernet	
Chipset	1 x Intel® I210AT 1 x Intel® I219LM
Ethernet Interface	10/100/1000 Base-Tx GbE compatible
Lan Port	2 x RJ-45
Mechanical & Environmental	
Power Requirement	+12V ~ +26V
Power Type	AT/ATX (ATX is default setting)
Operating Temp	-10°C ~ 50°C (14°F ~ 122°F)
Storage Temp	-20°C ~ 60°C (-4°F ~ 140°F)
Operating Humidity	0% ~ 90% Relative Humidity, Non-condensing
Weight	2.84 Kgs
Dimensions(W x L x D)	283 x 222 x 45 mm
Certifications	
Certification Information	CE / FCC Class B
Software Support	
OS Information	Win 7 / Win 8 / Linux
Panel	
LCD Size	12.1", 4:3
Display Type	XGA
Resolution	1024x768
Pixel pitch	0.240mm(H) x 0.240mm(V)
Luminance	600 cd/m²
Contrast ratio	700
Viewing angle	70 (U), 70 (D), 80 (L), 80 (R)
Response time	16 ms
Backlight	LED
Touch Type	5 Wires resistive



Touch Light Transmission	80 %
Touch Controller	Onboard USB touch (EETI)

+ Ordering

LPC-1232-630-B1R
Intel Skylake i5-6300U CPU/4G memory/2GLAN/2COM/4USB/12~26V input/12V Adaptor



LPC-1532

15" 6th Gen Intel® ULT Core™ Processor i7/i5/i3
Fanless Rugged Touch Panel PC

- > Onboard 4th Gen Intel® ULT Core™ i5 6300U 2.40GHz BGA Processor
- > Two SODIMM sockets supports up to 32GB DDR4 2133 SDRAM
- > 2 USB, 2 COM
- > Dual Intel Gigabit LAN
- > Wide Voltage +12V ~ +26V Input, ErP Power
- > Backlight Controlled by PWM
- > IP65 Compliant Front Panel
- > Timer-Power-On

+ Spec

System	
Processor	6th Gen Intel® Core™ i5-6300U, 2-Core, 2.4GHz processor
System Memory	2 x 260-Pin DDR4 2133MHz SO-DIMM up to 32 GB
I/O Chip	EC ITE IT8528E
Watchdog Timer	HW Reset, 1sec. ~ 65535sec. and 1sec./step
HW Status Monitor	Monitoring System Temperature and Voltage with Auto Throttling Control
Expansion	
Expansion	1 x Mini PCIe Supports mSATA 1 x Mini PCIe Supports SIM Card
Storage	
Storage	1 x 2.5" Drive Bay
I/O	
USB	4 x USB 3.0
SATA	1 x SATA III
Com Port	1 x RS-232/422/485 (Factory Optional)
Other	1 x HDMI Output 1 x Knockouts for Antenna Mounting
Display	
Chipset	Intel® Skylake SoC integrated Graphics Supports dual display
Resolution	HDMI: Max. resolution 4096x2160 @ 24Hz
Audio	
Chipset	Realtek ALC233
Audio Interface	Line-Out
Ethernet	
Chipset	1 x Intel® I210AT 1 x Intel® I219LM
Ethernet Interface	10/100/1000 Base-Tx GbE compatible
Lan Port	2 x RJ-45
Mechanical & Environmental	
Power Requirement	+12V ~ +26V
Power Type	AT/ATX (ATX is default setting)
Operating Temp	-10°C ~ 50°C (14°F ~ 122°F)
Storage Temp	-20°C ~ 60°C (-4°F ~ 140°F)
Operating Humidity	0% ~ 90% Relative Humidity, Non-condensing
Dimensions(W x L x D)	350 x 273.9 x 53.1 mm
Certifications	
Certification Information	CE / FCC Class B
Software Support	
OS Information	Win 7 / Win 8 / Linux
Panel	
LCD Size	15", 4:3
Display Type	XGA
Resolution	1024 x 768
Pixel pitch	0.297mm(H) x 0.297mm(V)
Luminance	400 cd/m²
Contrast ratio	700
Viewing angle	70 (U), 70 (D), 80 (L), 80 (R)
Response time	16 ms
Backlight	LED
Touch Type	5 Wires resistive
Touch Light Transmission	80 %
Touch Controller	Onboard USB touch (EETI)



2

Multi-function Touch Panel PC FPC Series

CH2-FPC Series

FPC-08W29

8" Intel® Atom™ SoC Processor E3845 Fanless Multifunctional Touch Panel PC

FPC-17L08

17" 4th Gen Intel®Core™ Processor i7/i5/i3 All-in-One Multifunctional Touch Panel PC

FPC-21W08

21.5" 4th Gen Intel®Core™ Processor i7/i5/i3 All-in-One Multifunctional Touch Panel PC



FPC-08W29

8" Intel® Atom™ SoC Processor E3845 Fanless Multifunctional Touch Panel PC

- > 8" WSVGA TFT Touch Panel PC
- > 5-wire Resistive Touch Screen
- > Intel® Atom™ E3845 1.91GHz CPU
- > VGA, HDMI, Audio, Gigabit Ethernet
- > 1 CF, 2 COM, 4 USB
- > Fanless, VESA Compliance
- > IP-65 Compliant Front Panel
- > Wide Range Voltage Input +12V ~ +26V

Spec

System	
Processor	Intel® Atom™ E3845 4-Core 1.91GHz processor
System Chipset	Intel® Valleyview SoC
System Memory	1 x 204-Pin DDR3L 1333MHz SO-DIMM up to 8 GB
I/O Chip	Nuvoton W83627DHG-P
Watchdog Timer	H/W Reset, 1sec. ~ 65535sec and 1sec. or 1min./step
H/W Status Monitor	Monitoring SYSTEM Temperature, Voltage and FAN Status with Auto Throttling Control
SBC	ECM-BYT
Expansion	
Expansion	1 x Mini PCIe Supports mSATA
Storage	
Storage	1 x CompactFlash Type III Socket
I/O	
USB	1 x USB 3.0 3 x USB 2.0
Com Port	1 x RS-232/422/485 1 x RS-232
Display	
Chipset	Intel® Valleyview SoC integrated Graphics Supports dual display
Resolution	VGA:Max. resolution 2560x1080@ 60Hz HDMI:Max. resolution 1920x1200@ 60Hz
Audio	
Chipset	Realtek ALC892 Support 5.1-CH
Audio Interface	Mic-In and Line-Out
Ethernet	
Chipset	2 x Intel® I211AT
Ethernet Interface	10/100/1000 Base-Tx GbE compatible
Lan Port	2 x RJ-45
Mechanical & Environmental	
Operating Temp	0°C ~ 40°C (32°F ~ 104°F)
Storage Temp	-10°C ~ 50°C (14°F ~ 122°F)
Operating Humidity	0% ~ 90% Relative Humidity, Non-condensing
Weight	1.27Kgs
Dimension (L x W x H)	225 x 129 x 43.4 mm
Vibration Test	With SSD/mSATA : 1.5Grms, IEC 60068-2-64, Random, 5 ~ 500Hz, 30min/axis
Shock Test	With CF/SSD : 10Grms, IEC 60068-2-27, Half Sine, 11ms
System Fan	Fanless
Construction - Front	Metal
Construction - Rear	Aluminum + Metal
Certifications	
Certification Information	CE / FCC Class B
Software Support	
OS Information	Win 7 Win 8 Linux
Power Requirement	
Power Connector	Lockable DC Jack
Power Requirement	+12V ~ +26V



ACPI	Single Power ATX Support S0, S1, S3, S4, S5 ACPI 3.0 Compliant
Power Mode	AT/ATX (ATX is default setting)
Adapter	Input: 100 ~ 240Vdc/ 50 ~ 60Hz; Output: 60W Adapter (12V @ 5A Adapter)
Panel	
LCD Size	8"
Display Type	WVGA
Resolution	1024 x 600
Pixel pitch	0.1725 mm (W) x 0.1656 mm (H)
Luminance	500 cd/m2
Contrast ratio	700
Viewing angle	70 (U), 75 (D), 75 (L), 75 (R)
Response time	20 ms
Backlight	LED
Touch Type	5 Wires resistive
Touch Light Transmission	80 %
Touch Controller	Onboard USB touch (PenMount)

+ Ordering

FPC-08W29-00300-1R
8" WSVGA ECM-BYT, E3845/2G DDR3L A1

ACC-WIFI-USB-15R
USB WIFI 802.11b/g/n

ACC-FPC-WALLMT-02R
Wall Mount Bracket Kit for FPC-08W

ACC-ARM-D22R
VESA STAND, 75x75 & 100x100 mm

ACC-CF-XX



FPC-17L08

17" 4th Gen Intel®Core™ Processor i7/i5/i3 All-in-One Multifunctional Touch Panel PC

- > 17" SXGA TFT Touch Panel PC
- > 5-wire Resistive Touch Screen
- > Supports 4th Gen Intel®Core™ i7/i5/i3 PGA Processor
- > VGA, DP, HDMI, Audio
- > Gigabit Ethernet, WiFi Module
- > 3 x COM, 5 x USB
- > 2.5" SATA HDD/SSD Support
- > IP65 Compliant Front Panel
- > VESA Compliance

+ Spec

System	
Processor	4th Gen Intel® Core™ i3-4330TE 2-Core 2.4GHz processor 4th Gen Intel® Core™ i5-4570TE 2-Core 2.7GHz processor
System Chipset	Intel® Q87 Chipset
System Memory	2 x 204-Pin DDR3 1333MHz SO-DIMM up to 16 GB
I/O Chip	Nuvoton NTC6106D
SBC	EMX-Q87
Expansion	
Expansion	1 x Mini PCIe Supports mSATA
Storage	
Storage	1 x 2.5" Drive Bay
I/O	
USB	4 x USB 3.0 1 x USB 2.0
Com Port	1 x RS-232/422/485 2 x RS-232
Other	1 x WiFi
Display	
Chipset	Intel® Q87 Chipset Integrated Supports triple display
Resolution	DP:Max. resolution 1920x1200 VGA:Max. resolution 2048x1536 HDMI:Max. resolution 1920x1200
Audio	
Chipset	Realtek ALC892 supports 5.1-CH
Audio Interface	Mic-In, Line-In and Line-Out
Speaker Output	2 x 2W
Ethernet	
Chipset	1 x Intel® I211AT 1 x Intel® I217LM
Ethernet Interface	10/100/1000 Base-Tx GbE compatible
Lan Port	2 x RJ-45
Mechanical & Environmental	
Operating Temp	0°C ~ 40°C (32°F ~ 104°F)
Storage Temp	-10°C ~ 50°C (14°F ~ 122°F)
Operating Humidity	0% ~ 90% Relative Humidity, Non-condensing
Weight	6.14Kgs
Dimension (L x W x H)	387.5 x 346 x 76.6 mm
Vibration Test	With SSD/mSATA : 1.5Grms, IEC 60068-2-64, Random, 5 ~ 500Hz, 30min/axis
Shock Test	With CF/SSD : 10Grms, IEC 60068-2-27, Half Sine, 11ms
System Fan	Fan
Construction - Front	Black
Construction - Rear	Black
Certifications	
Certification Information	CE / FCC Class B
Software Support	
OS Information	Win 7 Win 8
Power Requirement	



ACPI	Single Power ATX Support S0, S1, S3, S4, S5 ACPI 3.0 Compliant
Power Mode	AT/ATX (ATX is default setting)
Panel	
LCD Size	17", 4:3
Display Type	SXGA
Resolution	1280 x 1024
Pixel pitch	0.264mm (H) x 0.264mm (V)
Luminance	350 cd/m2
Contrast ratio	800
Viewing angle	80 (U), 80 (D), 85 (L), 85 (R)
Response time	30 ms
Backlight	LED
Touch Type	5 Wires resistive
Touch Light Transmission	80 %
Touch Controller	USB touch (EETI)

Ordering

FPC-17L08-TH413-2R
17" SXGA i3-4330TE 2.4GHz/4GR/32GSSD

ACC-FPC-WALLMT-03R
Wall Mount Bracket Kit for FPC-17~21W B1

ACC-FPC-WALLMT-04R
Openframe Bracket Kit for FPC-17 Series B1

ACC-ARM-D23R
VESA Stand, 75 & 100mm



FPC-21W08

21.5" 4th Gen Intel®Core™ Processor i7/i5/i3 All-in-One Multifunctional Touch Panel PC

- > 21" Full HD TFT Touch Panel PC
- > 5-wire Resistive Touch Screen
- > Supports 4th Gen Intel®Core™ i7/i5/i3 PGA Processor
- > VGA, DP, HDMI, Audio
- > Gigabit Ethernet, WiFi Module
- > 3 x COM, 5 x USB
- > 2.5" SATA HDD/SSD Support
- > IP65 Compliant Front Panel
- > VESA Compliance

+ Spec

System	
Processor	4th Gen Intel® Core™ i3-4330TE 2-Core 2.4GHz processor 4th Gen Intel® Core™ i5-4570TE 2-Core 2.7GHz processor
System Chipset	Intel® Q87 Chipset
System Memory	2 x 204-Pin DDR3 1333MHz SO-DIMM up to 16 GB
I/O Chip	Nuvoton NTC6106D
SBC	EMX-Q87
Expansion	
Expansion	1 x Mini PCIe Supports mSATA
Storage	
Storage	1 x 2.5" Drive Bay
I/O	
USB	4 x USB 3.0 1 x USB 2.0
Com Port	1 x RS-232/422/485 2 x RS-232
Other	1 x WiFi
Display	
Chipset	Intel® Q87 Chipset Integrated Supports triple display
Resolution	DP:Max. resolution 1920x1200 VGA:Max. resolution 2048x1536 HDMI:Max. resolution 1920x1200
Audio	
Chipset	Realtek ALC892 supports 5.1-CH
Audio Interface	Mic-In, Line-In and Line-Out
Speaker Output	2 x 2W
Ethernet	
Chipset	1 x Intel® I211AT 1 x Intel® I217LM
Ethernet Interface	10/100/1000 Base-Tx GbE compatible
Lan Port	2 x RJ-45
Mechanical & Environmental	
Operating Temp	0°C ~ 40°C (32°F ~ 104°F)
Storage Temp	-10°C ~ 50°C (14°F ~ 122°F)
Operating Humidity	0% ~ 90% Relative Humidity, Non-condensing
Weight	7.32Kgs
Dimension (L x W x H)	526 x 346.5 x 80.4 mm
Vibration Test	With SSD/mSATA : 1.5Grms, IEC 60068-2-64, Random, 5 ~ 500Hz, 30min/axis
Shock Test	With CF/SSD : 10Grms, IEC 60068-2-27, Half Sine, 11ms
System Fan	Fan
Construction - Front	Black
Construction - Rear	Black
Certifications	
Certification Information	CE / FCC Class B
Software Support	
OS Information	Win 7 Win 8
Power Requirement	



ACPI	Single Power ATX Support S0, S1, S3, S4, S5 ACPI 3.0 Compliant
Power Mode	AT/ATX (ATX is default setting)
Panel	
LCD Size	21.5"
Display Type	Full HD
Resolution	1920x1080
Pixel pitch	0.248mm (H) x 0.248mm (V)
Luminance	250 cd/m2
Contrast ratio	1000
Viewing angle	80 (U), 80 (D), 85 (L), 85 (R)
Response time	5 ms
Backlight	LED
Touch Type	5 Wires resistive
Touch Light Transmission	80 %
Touch Controller	USB touch (EETI)

Ordering

FPC-21W08-TH413-2R
21.5" FHD i3-4330TE 2.4GHz/4GR/320GHD

ACC-FPC-WALLMT-03R
Wall Mount Bracket Kit for FPC-17~21W B1

ACC-FPC-WALLMT-05R
Openframe Bracket Kit for FPC-18~21W B1

ACC-ARM-D23R
VESA Stand, 75 & 100mm



3

Multi-touch Panel PC BFC/APC Series

CH3-BFC/APC Series

APC-18W9	18.5" Intel® Celeron® SoC Processor J1900 Fanless Full Flat Multi-Touch Panel PC
BFC-10W9	10.1" Intel® Atom™ SoC processor E3845 Fanless Full Flat Multi-Touch Panel PC
BFC-1509	15" Intel® Celeron® SoC Processor J1900 Fanless Full Flat Multi-Touch Panel PC
BFC-15W9	15.6" Intel® Celeron® SoC Processor J1900 Fanless Full Flat Multi-Touch Panel PC
BFC-1709	17" Intel® Celeron® SoC Processor J1900 Fanless Full Flat Multi-Touch Panel PC



APC-18W9

18.5" Intel® Celeron® SoC Processor J1900
Fanless Full Flat Multi-Touch Panel PC

- > Onboard Intel® Celeron® SoC J1900 2.0GHz BGA Processor
- > Projected Capacitive Touch Supports Multi-touch
- > 2 x Intel® Gigabit Ethernet, 5.1-CH Audio
- > 1 HDMI, 1 CF, 1 USB 2.0, 1 USD 3.0, 1 COM
- > Fanless System & VESA Compliance
- > Wide Voltage +12V ~ +26V Input, ErP Power
- > Timer-Power-On
- > Front Side IP55 Dust and Water Proof
- > Optional WiFi Module

+ Spec

System	
Processor	Intel® Celeron® J1900 4-Core 2.0GHz processor
System Chipset	Intel® Valleyview SoC
System Memory	1 x 204-Pin DDR3L 1066MHz SO-DIMM up to 8 GB or 204-Pin DDR3L 1333MHz SO-DIMM
I/O Chip	EC ITE IT8528E
Watchdog Timer	H/W Reset: 1sec.~255min. and 1sec. or 1min./step
H/W Status Monitor	Monitoring System Temperature and Voltage with Auto Throttling Control
SBC	EBM-BYT
Expansion	
Expansion	1 x Mini PCIe 1 x Mini PCIe Supports mSATA
Storage	
Storage	1 x CompactFlash Type III Socket 1 x 2.5" Drive Bay
I/O	
USB	1 x USB 3.0 1 x USB 2.0
Com Port	1 x RS-232/422/485
Display	
Chipset	Intel® Cedarview Integrated Graphics Supports dual display
Resolution	HDMI:Max. resolution 1920x1200@ 60Hz LVDS:Max. resolution 1920x1200@ 60Hz
Audio	
Chipset	Realtek ALC892 supports 5.1-CH
Audio Interface	Line-Out
Ethernet	
Chipset	2 x Intel® I211AT
Ethernet Interface	10/100/1000 Base-Tx GbE compatible
Lan Port	2 x RJ-45
Mechanical & Environmental	
Operating Temp	0°C ~ 40°C (32°F ~ 104°F)
Storage Temp	-10°C ~ 50°C (14°F ~ 122°F)
Operating Humidity	0% ~ 90% Relative Humidity, Non-condensing
Weight	4.54Kgs
Dimension (L x W x H)	443 x 290 x 59 mm
Vibration Test	With SSD/mSATA : 1.5Grms, IEC 60068-2-64, Random, 5 ~ 500Hz, 30min/axis
Shock Test	With CF/SSD : 10Grms, IEC 60068-2-27, Half Sine, 11ms
System Fan	Fanless
Construction - Front	Black Coverlens
Construction - Rear	Black
Certifications	
Certification Information	CE / FCC Class B
Software Support	
OS Information	Win 7 Win 8 Linux
Power Requirement	



Power Connector	Lockable DC Jack
Power Requirement	+12V ~ +26V
Power Mode	AT/ATX
Adapter	Input: 100 ~ 240Vac/ 50 ~ 60Hz Output: 60W Adapter (12V @ 5A Adapter)
Panel	
LCD Size	18.5"
Display Type	WXGA
Resolution	1366x768
Pixel pitch	0.300mm (H) x 0.300mm (V)
Luminance	300cd/m2
Contrast ratio	1000
Viewing angle	80 (U), 80 (D), 85 (L), 85 (R)
Response time	5ms
Backlight	LED
Touch Type	Projective Capacitive
Touch Light Transmission	91%
Touch Controller	USB touch (EET)

 Ordering

APC-18W9-190-A1R
18" PCT J1900 2.0GHz/2GR/SSD32G



BFC-10W9

10.1" Intel® Atom™ SoC processor E3845 Fanless Full Flat Multi-Touch Panel PC with Full IP-65

- > Onboard Intel® Celeron® E3845 Quad-Core 1.91GHz
- > Full Flat Front Panel with Projected Capacitive Touch Supports Multi Touch
- > Intel® I211AT Gigabit Ethernet, 5.1-CH Audio
- > 1 VGA, 1 HDMI, 2 LAN, 1 CF Slot, 2 COM, 1 USB 3.0, 3 USB 2.0
- > Fanless System & VESA Compliance
- > Wide Voltage +12V ~ +26V Input, ErP Power
- > Timer-Power-On
- > Front Side IP65 Dust and Water Proof
- > Optional WiFi Module

+ Spec

System	
Processor	Intel® Atom™ E3845 4-Core 1.91GHz processor
System Chipset	Intel® Valleyview SoC
System Memory	1 x 204-Pin DDR3L 1066/1333MHz SO-DIMM up to 8 GB
I/O Chip	EC ITE IT8528E
Watchdog Timer	H/W Reset: 1sec.~255min. and 1sec. or 1min./step
H/W Status Monitor	Monitoring System Temperature and Voltage with Auto Throttling Control
SBC	ECM-BYT
Expansion	
Expansion	1 x Mini PCIe Supports mSATA
Storage	
Storage	1 x CompactFlash Type III Socket 1 x 2.5" Drive Bay (optional by modify back cover)
I/O	
USB	1 x USB 3.0 3 x USB 2.0
Com Port	1 x RS-232 1 x RS-232/422/485
Display	
Chipset	Intel® Cedarview Integrated Graphics Supports dual display
Resolution	HDMI:Max. resolution 1920x1200@ 60Hz LVDS:Max. resolution 1920x1200@ 60Hz
Audio	
Chipset	Realtek ALC892 supports 5.1-CH
Audio Interface	Line-Out
Ethernet	
Chipset	2 x Intel® I211AT
Ethernet Interface	10/100/1000 Base-Tx GbE compatible
Lan Port	2 x RJ-45
Mechanical & Environmental	
Operating Temp	0°C ~ 40°C (32°F ~ 104°F)
Storage Temp	-10°C ~ 50°C (14°F ~ 122°F)
Operating Humidity	0% ~ 90% Relative Humidity, Non-condensing
Weight	1.2Kgs
Dimension (L x W x H)	251.94 x 154.5 x 45.25 mm
Vibration Test	With SSD/mSATA : 1.5Grms, IEC 60068-2-64, Random, 5 ~ 500Hz, 30min/axis
Shock Test	With CF/SSD : 10Grms, IEC 60068-2-27, Half Sine, 11ms
System Fan	Fanless
Construction - Front	Silver Aluminum
Construction - Rear	Black
Certifications	
Certification Information	CE / FCC Class B
Software Support	
OS Information	Win 7 Win 8 Linux
Power Requirement	
Power Connector	Lockable DC Jack



Power Requirement	+12V ~ +26V
Power Mode	AT/ATX
Adapter	Input: 100 ~ 240Vac/ 50 ~ 60Hz Output: 60W Adapter (12V @ 5A Adapter)
Panel	
LCD Size	10.1"
Resolution	1024x600
Pixel pitch	0.2175 (H) x 0.2088 (V)
Luminance	200cd/m2
Contrast ratio	500
Viewing angle	60 (U), 60 (D), 70 (L), 70 (R)
Response time	7ms
Backlight	LED
Touch Type	Projective Capacitive
Touch Light Transmission	86%
Touch Controller	USB touch (EET)

+ Ordering

BFC-10W9-190-A1R
 BFC-10W w/E3845/2GR/2com/4USB



BFC-1509

15" Intel® Celeron® SoC Processor J1900 Fanless
Full Flat Multi-Touch Panel PC with Full IP-65

- > Onboard Intel® Celeron® SoC J1900 2.0GHz BGA Processor
- > Full Flat Front Panel with Projected Capacitive Touch Supports Multi Touch
- > 1 x Intel® Gigabit Ethernet, 5.1-CH Audio
- > 1 HDMI, 1 CF, 1 USB 3.0, 1 USB 2.0, 1 COM
- > Fanless System & VESA Compliance
- > Wide Voltage +12V ~ +26V Input, ErP Power
- > Timer-Power-On
- > Front Side IP65 Dust and Water Proof
- > Optional Mini PCIe 3G with SIM Slot and WiFi Module

+ Spec

System	
Processor	Intel® Celeron® J1900 4-Core 2.0GHz processor
System Chipset	Intel® Valleyview SoC
System Memory	1 x 204-Pin DDR3L 1066/1333MHz SO-DIMM up to 8 GB
I/O Chip	EC ITE IT8528E
Watchdog Timer	H/W Reset: 1sec.~255min. and 1sec. or 1min./step
H/W Status Monitor	Monitoring System Temperature and Voltage with Auto Throttling Control
SBC	EBM-BYT
Expansion	
Expansion	1 x Mini PCIe 1 x Mini PCIe Supports mSATA
Storage	
Storage	1 x CompactFlash Type VII Socket 1 x 2.5" Drive Bay
I/O	
USB	1 x USB 3.0 1 x USB 2.0
Com Port	1 x RS-232/422/485
Display	
Chipset	Intel® Valleyview SoC integrated Graphics Supports dual display
Resolution	HDMI:Max. resolution 1920x1200@ 60Hz LVDS:Max. resolution 1920x1200@ 60Hz
Audio	
Chipset	Realtek ALC892 supports 5.1-CH
Audio Interface	Line-Out
Ethernet	
Chipset	2 x Intel® I211AT
Ethernet Interface	10/100/1000 Base-Tx GbE compatible
Lan Port	2 x RJ-45
Mechanical & Environmental	
Operating Temp	0°C ~ 40°C (32°F ~ 104°F)
Storage Temp	-10°C ~ 50°C (14°F ~ 122°F)
Operating Humidity	0% ~ 90% Relative Humidity, Non-condensing
Weight	4.2Kgs
Dimension (L x W x H)	350 x 274 x 53.5 mm
Vibration Test	With SSD/mSATA : 1.5Grms, IEC 60068-2-64, Random, 5 ~ 500Hz, 30min/axis
Shock Test	With CF/SSD : 10Grms, IEC 60068-2-27, Half Sine, 11ms
System Fan	Fanless
Construction - Front	Silver Aluminum
Construction - Rear	Black
Certifications	
Certification Information	CE / FCC Class B
Software Support	
OS Information	Win 7 Win 8 Linux
Power Requirement	
Power Connector	Lockable DC Jack



Power Requirement	+12V ~ +26V
Power Mode	AT/ATX
Adapter	Input: 100 ~ 240Vac/ 50 ~ 60Hz Output: 60W Adapter (12V @ 5A Adapter)
Panel	
LCD Size	15", 4:3
Display Type	XGA
Resolution	1024x768
Pixel pitch	0.297mm (H) x 0.297mm (V)
Luminance	400cd/m2
Contrast ratio	700
Viewing angle	60 (U), 80 (D), 80 (L), 80 (R)
Response time	8ms
Backlight	LED
Touch Type	Projective Capacitive
Touch Light Transmission	88 %
Touch Controller	USB touch (EETI)

+ Ordering

BFC-1509-190-A1R
 BFC-150 w/J1900 2.0G/2GR/SPK/PCT/1LAN



BFC-15W9

15.6" Intel® Celeron® SoC Processor J1900 Fanless Full Flat Multi-Touch Panel PC

- > Onboard Intel® Celeron® SoC J1900 2.0GHz BGA Processor
- > Full Flat Front Panel with Projected Capacitive Touch Supports Multi Touch
- > Intel® 1211AT Gigabit Ethernet, 5.1-CH Audio
- > 1 HDMI, 1 COM, 2 USB, 1 CF Slot
- > Fanless System & VESA Compliance
- > Wide Voltage +12V ~ +26V Input, ErP Power
- > Timer-Power-On
- > Front Side IP65 Dust and Water Proof
- > Optional Mini PCIe 3G with SIM Slot and WiFi Module

+ Spec

System	
Processor	Intel® Celeron® J1900 4-Core 2.0GHz processor
System Chipset	Intel® Valleyview SoC
System Memory	1 x 204-Pin DDR3L 1066MHz SO-DIMM up to 8 GB or 204-Pin DDR3L 1333MHz SO-DIMM
I/O Chip	EC ITE IT8528E
Watchdog Timer	H/W Reset: 1sec.~255min. and 1sec. or 1min./step
H/W Status Monitor	Monitoring System Temperature and Voltage with Auto Throttling Control
SBC	EBM-BYT
Expansion	
Expansion	1 x Mini PCIe 1 x Mini PCIe Supports mSATA
Storage	
Storage	1 x CompactFlash Type III Socket 1 x 2.5" Drive Bay
I/O	
USB	1 x USB 3.0 1 x USB 2.0
Com Port	1 x RS-232/422/485
Display	
Chipset	Intel® Valleyview SoC integrated Graphics Supports dual display
Resolution	HDMI:Max. resolution 1920x1200@ 60Hz LVDS:Max. resolution 1920x1200@ 60Hz
Audio	
Chipset	Realtek ALC892 supports 5.1-CH
Audio Interface	Line-Out
Ethernet	
Chipset	2 x Intel® I211AT
Ethernet Interface	10/100/1000 Base-Tx GbE compatible
Lan Port	2 x RJ-45
Mechanical & Environmental	
Operating Temp	0°C ~ 40°C (32°F ~ 104°F)
Storage Temp	-10°C ~ 50°C (14°F ~ 122°F)
Operating Humidity	0% ~ 90% Relative Humidity, Non-condensing
Dimension (L x W x H)	385.3 x 240.3 x 55.5 mm
Vibration Test	With SSD/mSATA : 1.5Gms, IEC 60068-2-64, Random, 5 ~ 500Hz, 30min/axis
Shock Test	With CF/SSD : 10Gms, IEC 60068-2-27, Half Sine, 11ms
System Fan	Fanless
Construction - Front	Silver Aluminum
Construction - Rear	Black
Certifications	
Certification Information	CE / FCC Class B
Software Support	
OS Information	Win 7 Win 8 Linux
Power Requirement	
Power Connector	Lockable DC Jack



Power Requirement	+12V ~ +26V
Power Mode	AT/ATX
Adapter	Input: 100 ~ 240Vac/ 50 ~ 60Hz Output: 60W Adapter (12V @ 5A Adapter)
Panel	
LCD Size	15.6"
Display Type	WXGA
Resolution	1366x768
Pixel pitch	0.252mm (H) x 0.252mm (V)
Luminance	300cd/m2
Contrast ratio	500
Viewing angle	80 (U), 80 (D), 85 (L), 85 (R)
Response time	8ms
Backlight	LED
Touch Type	Projective Capacitive
Touch Light Transmission	88 %
Touch Controller	USB touch (EETI)

+ Ordering

BFC-15W9-190-A1R
 BFC-15W w/ J1900/ 2G DDR3L/LAN/COM



BFC-1709

17" Intel® Celeron® SoC Processor J1900 Fanless Full Flat Multi-Touch Panel PC

- > Onboard Intel® Celeron® SoC J1900 2.0GHz BGA Processor
- > Full Flat Front Panel with Projected Capacitive Touch Supports Multi Touch
- > Intel® I211AT Gigabit Ethernet, 5.1-CH Audio
- > 1 HDMI, 1 COM, 2 USB, 1 CF Slot
- > Fanless System & VESA Compliance
- > Wide Voltage +12V ~ +26V Input, ErP Power
- > Timer-Power-On
- > Front Side IP65 Dust and Water Proof
- > Optional Mini PCIe 3G with SIM Slot and WiFi Module

+ Spec

System	
Processor	Intel® Celeron® J1900 4-Core 2.0GHz processor
System Chipset	Intel® Valleyview SoC
System Memory	1 x 204-Pin DDR3L 1066MHz SO-DIMM up to 8 GB or 204-Pin DDR3L 1333MHz SO-DIMM
I/O Chip	EC ITE IT8528E
Watchdog Timer	H/W Reset: 1sec.~255min. and 1sec. or 1min./step
H/W Status Monitor	Monitoring System Temperature and Voltage with Auto Throttling Control
SBC	EBM-BYT
Expansion	
Expansion	1 x Mini PCIe 1 x Mini PCIe Supports mSATA
Storage	
Storage	1 x CompactFlash Type III Socket 1 x 2.5" Drive Bay
I/O	
USB	1 x USB 3.0 1 x USB 2.0
Com Port	1 x RS-232/422/485
Display	
Chipset	Intel® Cedarview Integrated Graphics Supports dual display
Resolution	HDMI:Max. resolution 1920x1200@ 60Hz LVDS:Max. resolution 1920x1200@ 60Hz
Audio	
Chipset	Realtek ALC892 supports 5.1-CH
Audio Interface	Line-Out
Ethernet	
Chipset	2 x Intel® I211AT
Ethernet Interface	10/100/1000 Base-Tx GbE compatible
Lan Port	2 x RJ-45
Mechanical & Environmental	
Operating Temp	0°C ~ 40°C (32°F ~ 104°F)
Storage Temp	-10°C ~ 50°C (14°F ~ 122°F)
Operating Humidity	0% ~ 90% Relative Humidity, Non-condensing
Weight	5.2Kgs
Dimension (L x W x H)	384.5 x 317 x 59.5 mm
Vibration Test	With SSD/mSATA : 1.5Grms, IEC 60068-2-64, Random, 5 ~ 500Hz, 30min/axis
Shock Test	With CF/SSD : 10Grms, IEC 60068-2-27, Half Sine, 11ms
System Fan	Fanless
Construction - Front	Silver Aluminum
Construction - Rear	Black
Certifications	
Certification Information	CE / FCC Class B
Software Support	
OS Information	Win 7 Win 8 Linux
Power Requirement	



Power Connector	Lockable DC Jack
Power Requirement	+12V ~ +26V
Power Mode	AT/ATX
Adapter	Input: 100 ~ 240Vac/ 50 ~ 60Hz Output: 60W Adapter (12V @ 5A Adapter)
Panel	
LCD Size	17", 4:3
Resolution	1280 x 1024
Pixel pitch	0.264mm (H) x 0.264mm (V)
Luminance	350cd/m2
Contrast ratio	800
Viewing angle	80 (U), 80 (D), 85 (L), 85 (R)
Response time	30ms
Backlight	LED
Touch Type	Projective Capacitive
Touch Light Transmission	88 %
Touch Controller	USB touch (EETI)

 Ordering

BFC-1709-190-A1R
 BFC-170 w/ J1900/ 2G DDR3L/LAN/COM



4

Modularized/Rugged Panel PC ARC/SPC Series

CH4-ARC/SPC Series

ARC-1209	12.1" Intel® Atom™ SoC Processor E3845 Fanless Rugged Touch Panel PC with IET Expansion
ARC-1509	15" Intel® Atom™ SoC Processor E3845 Fanless Rugged Touch Panel PC with IET Expansion
SPC-1209	12.1" Intel® Atom™ SoC Processor E3845 Fanless Stainless Steel Chassis Touch Panel PC with Full IP-65
SPC-1509	15" Intel® Atom™ SoC Processor E3845 Fanless Stainless Steel Chassis Touch Panel PC with Full IP-65
SPC-1709	17" Intel® Atom™ SoC Processor E3845 Fanless Stainless Steel Chassis Touch Panel PC with Full IP-65
SPC-22W9	22" Intel® Atom™ SoC Processor E3845 Fanless Stainless Steel Chassis Touch Panel PC with Full IP-65



ARC-1209

12.1" Intel® Atom™ SoC Processor E3845 Fanless Rugged Touch Panel PC with IET Expansion

- > Onboard Intel® Celeron® E3845 Quad-Core 1.91GHz
- > One 204-pin DDR3L SODIMM Socket Supports Up to 8GB DDR3L 1333 SDRAM
- > 4 USB, 2 COM
- > Dual Intel I210IT Gigabit LAN
- > Wide Voltage +12V ~ +26V Input, ErP Power
- > Available Expansion for Audio, USB, COM, HDMI, PCIe, GPIO, CAN Bus
- > IP65 Compliant Front Panel, IP41 Rear Box
- > 5-wire Resistive Touch

Spec

System	
Processor	Intel® Atom™ E3845 4-Core 1.91GHz processor
System Memory	1 x 204-Pin DDR3L 1333MHz SO-DIMM up to 8 GB
I/O Chip	EC ITE IT8528E
Watchdog Timer	H/W Reset, 1sec. ~ 65535sec./1sec.step
H/W Status Monitor	Monitoring SYSTEM Temperature and Voltage with Auto Throttling Control
SBC	ARC-BYT
Expansion	
Expansion	1 x Mini PCIe Support mSATA 1 x Optional 80-pin Expansion
Storage	
Storage	1 x 2.5" Drive Bay (7mm HDD Restricted)
I/O	
USB	1 x USB 3.0 3 x USB 2.0
SATA	1 x SATA II
Com Port	1 x RS-232/422/485 (Factory Optional) 1 x RS-232
Other	1 x WiFi 3 x Knockouts for Antenna Mounting
Display	
Chipset	Intel® Valleyview SoC integrated Graphics Supports optional dual display
Resolution	HDMI:Max. resolution 1920x1200@ 60Hz
Audio	
Chipset	Realtek ALC892
Audio Interface	Speaker Out
Speaker Output	2 x 1W
Ethernet	
Chipset	2 x Intel® I210IT
Ethernet Interface	10/100/1000 Base-Tx GbE compatible
Lan Port	2 x RJ-45
Mechanical & Environmental	
Operating Temp	-30°C ~ 60°C (-22°F ~ 140°F)
Storage Temp	-30°C ~ 70°C (-22°F ~ 158°F)
Operating Humidity	0% ~ 90% Relative Humidity, Non-condensing
Weight	2.4Kgs
Dimension (L x W x H)	283 x 222 x 46mm
Vibration Test	With SSD/mSATA : 5Grms, IEC 60068-2-64, Random, 5 ~ 500Hz, 1hr/axis
Shock Test	Operating with SSD/CFast/mSATA : MIL-STD-810G, Method 516.6, Procedure I, functional shock=20G
System Fan	Fanless
Construction - Front	Silver Aluminum
Construction - Rear	Black
Certifications	
Certification Information	CE / FCC Class B
Software Support	
OS Information	Win 7 Win 8 Linux
Power Requirement	



Power Connector	Lockable DC Jack
Power Requirement	+12V ~ +26V
Power Mode	AT/ATX (ATX is default setting)
Adapter	Input: 100 ~ 240Vac/ 50 ~ 60Hz Output: 60W Adapter (12V @ 5A Adapter)
Panel	
LCD Size	12.1", 4:3
Display Type	XGA
Resolution	1024x768
Pixel pitch	0.1905 mm (H) x 0.1905 mm (V)
Luminance	600 cd/m ²
Contrast ratio	700
Viewing angle	80 (U), 80 (D), 80 (L), 80 (R)
Response time	16 ms
Backlight	LED
Touch Type	5 Wires resistive
Touch Light Transmission	80 %
Touch Controller	Onboard USB touch (PenMount)

+ Ordering

ARC-1209-384-A1R
ARC-1209 w/E3845/XGA/4GR/A1R

ARC-BYT DB-A
4 x USB3.0 module

ARC-BYT DB-B
HDMI + Audio (Line out, Line in, Mic in)

ARC-BYT DB-C
HDMI + Mini PCIe (w/ SIM slot)

ACC-ARM-D29R
ARM A800B VESA standard 75*75 & 100*100mm

ACC-CF-XX
CompactFlash Card Series

(xx=Capacity, Capacity Option: 128, 256, 512 MB, 1, 2, 4, 8 GB)



ARC-1509

15" Intel® Atom™ SoC Processor E3845 Fanless Rugged Touch Panel PC with IET Expansion

- > Onboard Intel® Atom™ SoC E3845 1.91GHz BGA processor
- > One 204-pin DDR3L SODIMM Socket Supports Up to 8GB DDR3L 1333 SDRAM
- > 4 USB, 2 COM
- > Dual Intel I210IT Gigabit LAN
- > Wide Voltage +12V ~ +26V Input, ErP Power
- > Available Expansion for Audio, USB, COM, HDMI, PCIe, GPIO, CAN Bus
- > IP65 Compliant Front Panel, IP41 Rear Box
- > 5-wire Resistive Touch (Optional P-cap Available)
- > TPM 1.2 Function (Optional)

+ Spec

System	
Processor	Intel® Atom™ E3845 4-Core 1.91GHz processor
System Memory	1 x 204-Pin DDR3L 1333MHz SO-DIMM up to 8 GB
I/O Chip	EC ITE IT8528E
Watchdog Timer	H/W Reset, 1sec. ~ 65535sec. and 1sec./step
H/W Status Monitor	Monitoring System Temperature and Voltage with Auto Throttling Control
SBC	ARC-BYT
Expansion	
Expansion	1 x Mini PCIe Supports mSATA 1 x Optional 80-pin Expansion
Storage	
Storage	1 x 2.5" Drive Bay (7mm HDD Restricted)
I/O	
USB	1 x USB 3.0 3 x USB 2.0
SATA	1 x SATA II
Com Port	1 x RS-232/422/485 (Factory Optional) 1 x RS-232
Other	1 x WiFi 3 x Knockouts for Antenna Mounting
Display	
Chipset	Intel® Valleyview SoC integrated Graphics Supports optional dual display
Resolution	HDMI: Max. resolution 1920x1200 @ 60Hz
Audio	
Chipset	Realtek ALC892
Audio Interface	Speaker Out
Speaker Output	2 x 1W
Ethernet	
Chipset	2 x Intel® I210IT
Mechanical & Environmental	
Power Type	AT/ATX (ATX is default setting)
Operating Temp	-30°C ~ 60°C (-22°F ~ 140°F)
Storage Temp	-30°C ~ 70°C (-22°F ~ 158°F)
Operating Humidity	0% ~ 90% Relative Humidity, Non-condensing
Weight	3.7 Kgs
Dimension (L x W x H)	350 x 274 x 49.8 mm
Shock Test	Operating with SSD/CFast/mSATA : MIL-STD-810G, Method 516.6, Procedure I, functional shock=20G
System Fan	Fanless
Construction - Front	Silver Aluminum
Construction - Rear	Black
Certifications	
Certification Information	CE FCC Class B
Software Support	
OS Information	Win 7 Win 8 Linux
Power Requirement	
Power Connector	Lockable DC Jack



Power Requirement	+12V ~ +26V
Adapter	Input: 100 ~ 240Vac/ 50 ~ 60Hz Output: 60W Adapter (12V @ 5A Adapter) AC-DC Adapter
Panel	
LCD Size	15",4:3
Display Type	XGA
Resolution	1024x768
Pixel pitch	0.297mm(H) x 0.297mm(V)
Luminance	400 cd/m ²
Contrast ratio	700
Viewing angle	70 (U), 70 (D), 80 (L), 80 @
Response time	16 ms
Backlight	LED
Touch Type	5 Wires resistive
Touch Light Transmission	80 %
Touch Controller	Onboard USB touch (PenMount)

Ordering

ARC-1509-384-A1R
Intel Atom SoC E3845 1.91GHz/4G DDR3L/2GLAN/2COM/4USB/12~26V Input/12V Adaptor

ACC-ARC-USB-1R
4 x USB3.0 module

ACC-ARC-AUDIO-1R
HDMI + Audio (Line out, Line in, Mic in)

ACC-ARC-MPCIE-1R
HDMI + Mini PCIe (w/ SIM slot)

ACC-ARM-D1R
VESA STAND, 75mm & 100 mm

ACC-ARM-D40R
Stylish Table Stand for Cable Collection (75x75 mm and 100x100 mm)



SPC-1209

12.1" Intel® Atom™ SoC Processor E3845 Fanless Stainless Steel Chassis Touch Panel PC with Full IP-65

- > Fanless Onboard Intel® Atom Quad-Core E3845 1.91GHz with Integrated Chipset
- > One 204-pin DDR3L SODIMM Socket Supports Up to 8GB DDR3L 1333 SDRAM
- > 1 CF, 2 USB, 1 COM
- > Dual Intel I210IT Gigabit LAN
- > Wide Voltage +12V ~ +26V Input, ErP Power
- > Backlight Controlled by PWM
- > Full System IP65
- > Timer-Power-On

+ Spec

System	
Processor	Intel® Atom™ E3845 4-Core 1.91GHz processor
System Memory	1 x 204-Pin DDR3L 1333MHz SO-DIMM up to 8 GB
I/O Chip	EC ITE IT8528E
Watchdog Timer	H/W Reset, 1sec. ~ 65535sec./1sec.step
H/W Status Monitor	Monitoring SYSTEM Temperature and Voltage with Auto Throttling Control
SBC	EBM-BYT
Expansion	
Expansion	1 x Mini PCIe Support mSATA 1 x Mini PCIe Supports SIM Card
Storage	
Storage	1 x CompactFlash Type VII Socket 1 x 2.5" Drive Bay
I/O	
USB	3 x USB 2.0
SATA	1 x SATA II
Com Port	1 x RS-232
Display	
Chipset	Intel® Valleyview SoC integrated Graphics Supports dual display
Resolution	HDMI:Max. resolution 1920x1200@ 60Hz
Audio	
Chipset	Realtek ALC892
Audio Interface	Line-Out
Speaker Output	2 x 5W
Ethernet	
Chipset	1 x Intel® I210IT
Ethernet Interface	10/100/1000 Base-Tx GbE compatible
Lan Port	2 x RJ-45
Mechanical & Environmental	
Operating Temp	0°C ~ 40°C (32°F ~ 104°F)
Storage Temp	-20°C ~ 60°C (-4°F ~ 140°F)
Operating Humidity	20% ~ 80% Relative Humidity, Non-condensing
Weight	4.23Kgs
Dimension (L x W x H)	311 x 272 x 58mm
Vibration Test	With SSD/mSATA : 1.5Gms, IEC 60068-2-64, Random, 5 ~ 500Hz, 30min/axis
Shock Test	With CF/SSD : 10Gms, IEC 60068-2-27, Half Sine, 11ms
System Fan	Fanless
Construction - Front	Front & Rear Silver Stainless
Construction - Rear	Black
Certifications	
Certification Information	CE / FCC Class A
Software Support	
OS Information	Win 7 Win 8 Linux
Power Requirement	
Power Connector	Lockable DC Jack
Power Requirement	+12V ~ +26V
Power Mode	AT/ATX (ATX is default setting)



Adapter	Input: 100 ~ 240Vac/ 50 ~ 60Hz Output: 60W Adapter (24V @ 2.5A Adapter)
Panel	
LCD Size	12.1", 4:3
Display Type	XGA
Resolution	1024x768
Pixel pitch	0.240mm(H) x 0.240mm(V)
Luminance	600 cd/m2
Contrast ratio	700
Viewing angle	70 (U), 70 (D), 80 (L), 80 (R)
Response time	16 ms
Backlight	LED
Touch Type	5 Wires resistive
Touch Light Transmission	80 %
Touch Controller	Onboard USB touch (EETI)

+ Ordering

SPC-1209-384-A1R
12.1" XGA Waterproof Stainless Panel PC with Intel® Atom Quad-Core E3845 1.91GHz CPU

ACC-SPC-WIFI2R
802.11b/g/n MPCle/2Antenna/Cable, only for SPC-12 Series

ACC-ARM-D4R
ARM A800 VESA standard 75*75 & 100*100mm

ACC-ARM-D22R
VESA STAND, 75x75 & 100x100 mm



SPC-1509

15" Intel® Atom™ SoC Processor E3845 Fanless Stainless Steel Chassis Touch Panel PC with Full IP-65

- > Fanless Onboard Intel® Atom Quad-Core E3845 1.91GHz with Integrated Chipset
- > One 204-pin DDR3L SODIMM Socket Supports Up to 8GB DDR3L 1333 SDRAM
- > 1 CF, 2 USB, 1 COM
- > Dual Intel I210IT Gigabit LAN
- > Wide Voltage +12V ~ +26V Input, ErP Power
- > Backlight Controlled by PWM
- > Full System IP65
- > Timer-Power-On

Spec

System	
Processor	Intel® Atom™ E3845 4-Core 1.91GHz processor
System Memory	1 x 204-Pin DDR3L 1333MHz SO-DIMM up to 8 GB
I/O Chip	EC ITE IT8528E
Watchdog Timer	H/W Reset, 1sec. ~ 65535sec./1sec.step
H/W Status Monitor	Monitoring SYSTEM Temperature and Voltage with Auto Throttling Control
SBC	EBM-BYT
Expansion	
Expansion	1 x Mini PCIe Support mSATA 1 x Mini PCIe Supports SIM Card
Storage	
Storage	1 x CompactFlash Type VII Socket 1 x 2.5" Drive Bay
I/O	
USB	3 x USB 2.0
SATA	1 x SATA II
Com Port	1 x RS-232
Display	
Chipset	Intel® Valleyview SoC integrated Graphics Supports dual display
Resolution	HDMI:Max. resolution 1920x1200@ 60Hz
Audio	
Chipset	Realtek ALC892
Audio Interface	Line-Out
Speaker Output	2 x 5W
Ethernet	
Chipset	1 x Intel® I210IT
Ethernet Interface	10/100/1000 Base-Tx GbE compatible
Lan Port	2 x RJ-45
Mechanical & Environmental	
Operating Temp	0°C ~ 40°C (32°F ~ 104°F)
Storage Temp	-20°C ~ 60°C (-4°F ~ 140°F)
Operating Humidity	20% ~ 80% Relative Humidity, Non-condensing
Weight	6.42Kgs
Dimension (L x W x H)	371 x 308 x 63.6mm
Vibration Test	With SSD/mSATA : 1.5Grms, IEC 60068-2-64, Random, 5 ~ 500Hz, 30min/axis
Shock Test	With CF/SSD : 10Grms, IEC 60068-2-27, Half Sine, 11ms
System Fan	Fanless
Construction - Front	Front & Rear Silver Stainless
Construction - Rear	Black
Certifications	
Certification Information	CE / FCC Class A
Software Support	
OS Information	Win 7 Win 8 Linux
Power Requirement	
Power Connector	Lockable DC Jack
Power Requirement	+12V ~ +26V
Power Mode	AT/ATX (ATX is default setting)



Adapter	Input: 100 ~ 240Vac/ 50 ~ 60Hz Output: 60W Adapter (12V @ 5A Adapter) AC-DC Adapter AC-DC Adapter
Panel	
LCD Size	15", 4:3
Display Type	XGA
Resolution	1024x768
Pixel pitch	0.297mm(H) x 0.297mm(V)
Luminance	400 cd/m2
Contrast ratio	700
Viewing angle	70 (U), 70 (D), 80 (L), 80 (R)
Response time	16 ms
Backlight	LED
Touch Type	5 Wires resistive
Touch Light Transmission	80 %
Touch Controller	Onboard USB touch (EETI)

Ordering

SPC-1509-384-A1R
15" XGA Waterproof Stainless Panel PC with Intel® Atom Quad-Core E3845 1.91GHz CPU

ACC-SPC-WIFI-3R
802.11b/g/n MPCle/2Antenna/Cable

ACC-ARM-D1R
VESA STAND, 75mm & 100 mm

ACC-ARM-D23R
VESA STAND, 75mm & 100 mm



SPC-1709

17" Intel® Atom™ SoC Processor E3845 Fanless
Stainless Steel Chassis Touch Panel PC with Full
IP-65

- > Fanless Onboard Intel® Atom Quad-Core E3845 1.91GHz with Integrated Chipset
- > One 204-pin DDR3L SODIMM Socket Supports Up to 8GB DDR3L 1333 SDRAM
- > 1 CF, 2 USB, 1 COM
- > Dual Intel I210IT Gigabit LAN
- > Wide Voltage +12V ~ +26V Input, ErP Power
- > Backlight Controlled by PWM
- > Full System IP65
- > Timer-Power-On

Spec

System	
Processor	Intel® Atom™ E3845 4-Core 1.91GHz processor
System Memory	1 x 204-Pin DDR3L 1333MHz SO-DIMM up to 8 GB
I/O Chip	EC ITE IT8528E
Watchdog Timer	H/W Reset, 1sec. ~ 65535sec./1sec.step
H/W Status Monitor	Monitoring SYSTEM Temperature and Voltage with Auto Throttling Control
SBC	EBM-BYT
Expansion	
Expansion	1 x Mini PCIe Support mSATA 1 x Mini PCIe Supports SIM Card
Storage	
Storage	1 x CompactFlash Type VII Socket 1 x 2.5" Drive Bay
I/O	
USB	3 x USB 2.0
SATA	1 x SATA II
Com Port	1 x RS-232
Display	
Chipset	Intel® Valleyview SoC integrated Graphics Supports dual display
Resolution	HDMI:Max. resolution 1920x1200@ 60Hz
Audio	
Chipset	Realtek ALC892
Audio Interface	Line-Out
Speaker Output	2 x 5W
Ethernet	
Chipset	1 x Intel® I210IT
Ethernet Interface	10/100/1000 Base-Tx GbE compatible
Lan Port	2 x RJ-45
Mechanical & Environmental	
Operating Temp	0°C ~ 40°C (32°F ~ 104°F)
Storage Temp	-20°C ~ 60°C (-4°F ~ 140°F)
Operating Humidity	0% ~ 90% Relative Humidity, Non-condensing
Weight	7.5Kgs
Dimension (L x W x H)	405 x 353 x 66.6mm
Vibration Test	With SSD/mSATA : 1.5Grms, IEC 60068-2-64, Random, 5 ~ 500Hz, 30min/axis
Shock Test	With CF/SSD : 10Grms, IEC 60068-2-27, Half Sine, 11ms
System Fan	Fanless
Construction - Front	Front & Rear Silver Stainless
Construction - Rear	Black
Certifications	
Certification Information	CE / FCC Class A
Software Support	
OS Information	Win 7 Win 8 Linux
Power Requirement	
Power Connector	Lockable DC Jack
Power Requirement	+12V ~ +26V
Power Mode	AT/ATX (ATX is default setting)



Adapter	Input: 100 ~ 240Vac/ 50 ~ 60Hz Output: 60W Adapter (12V @ 5A Adapter) AC-DC Adapter AC-DC Adapter
Panel	
LCD Size	17", 4:3
Display Type	SXGA
Resolution	1280x1024
Pixel pitch	0.264mm(H) x 0.264mm(V)
Luminance	350 cd/m2
Contrast ratio	800
Viewing angle	80 (U), 80 (D), 85 (L), 85 (R)
Response time	30 ms
Backlight	LED
Touch Type	5 Wires resistive
Touch Light Transmission	80 %
Touch Controller	Onboard USB touch (EETI)

+ Ordering

SPC-1709-384-A1R
17" SXGA Waterproof Stainless Panel PC with Intel® Atom Quad-Core E3845 1.91GHz CPU

ACC-SPC-WIFI2R
802.11b/g/n MPCle/2Antenna/Cable, only for SPC-12 Series

ACC-ARM-D1R
VESA STAND, 75mm & 100 mm

ACC-ARM-D23R
VESA STAND, 75mm & 100 mm



SPC-22W9

22" Intel® Atom™ SoC Processor E3845 Fanless
Stainless Steel Chassis Touch Panel PC with Full
IP-65

- > Fanless Onboard Intel® Atom Quad-Core E3845 1.91GHz with Integrated Chipset
- > One 204-pin DDR3L SODIMM Socket Supports Up to 8GB DDR3L 1333 SDRAM
- > 1 CF, 2 USB, 1 COM
- > Dual Intel I210IT Gigabit LAN
- > Wide Voltage +12V ~ +26V Input, ErP Power
- > Backlight Controlled by PWM
- > Full System IP65
- > Timer-Power-On

Spec

System	
System Memory	1 x 204-Pin DDR3L 1333MHz SO-DIMM up to 8 GB
I/O Chip	EC ITE IT8528E
Watchdog Timer	H/W Reset, 1sec. ~ 65535sec./1sec.step
H/W Status Monitor	Monitoring SYSTEM Temperature and Voltage with Auto Throttling Control
SBC	EBM-BYT
Expansion	
Expansion	1 x Mini PCIe Support mSATA 1 x Mini PCIe Supports SIM Card
I/O	
USB	3 x USB 2.0
SATA	1 x SATA II
Com Port	1 x RS-232
Display	
Chipset	Intel® Valleyview SoC integrated Graphics Supports dual display
Resolution	HDMI:Max. resolution 1920x1200@ 60Hz
Audio	
Chipset	Realtek ALC892
Audio Interface	Line-Out
Speaker Output	2 x 5W
Ethernet	
Chipset	1 x Intel® I210IT
Ethernet Interface	10/100/1000 Base-Tx GbE compatible
Lan Port	2 x RJ-45
Mechanical & Environmental	
Operating Temp	0°C ~ 40°C (32°F ~ 104°F)
Storage Temp	-20°C ~ 60°C (-4°F ~ 140°F)
Operating Humidity	20% ~ 80% Relative Humidity, Non-condensing
Weight	9Kgs
Dimension (L x W x H)	546 x 378 x 69mm
Vibration Test	With SSD/mSATA : 1.5Grms, IEC 60068-2-64, Random, 5 ~ 500Hz, 30min/axis
Shock Test	With CF/SSD : 10Grms, IEC 60068-2-27, Half Sine, 11ms
System Fan	Fanless
Construction - Front	Front & Rear Silver Stainless
Construction - Rear	Black
Certifications	
Certification Information	CE / FCC Class A
Software Support	
OS Information	Win 7 Win 8 Linux
Power Requirement	
Power Connector	Lockable DC Jack
Power Requirement	+12V ~ +26V
Power Mode	AT/ATX (ATX is default setting)
Adapter	Input: 100 ~ 240Vac/ 50 ~ 60Hz Output: 60W Adapter (12V @ 5A Adapter) AC-DC Adapter AC-DC Adapter
Panel	



LCD Size	22"
Display Type	WSXGA
Resolution	1680x1050
Pixel pitch	0.282mm(H) x 0.282mm(V)
Luminance	250 cd/m2
Contrast ratio	1000
Viewing angle	80 (U), 80 (D), 85 (L), 85 (R)
Response time	5 ms
Backlight	LED
Touch Type	5 Wires resistive
Touch Light Transmission	80 %
Touch Controller	Onboard USB touch (EETI)

+ Ordering

SPC-22W9-384-A1R
22" WSXGA Waterproof Stainless Panel PC with Intel® Atom Quad-Core E3845 1.91GHz CPU

ACC-SPC-WIFI-2R
802.11b/g/n MPCle/2Antenna/Cable, only for SPC-12 Series

ACC-ARM-D1R
VESA STAND, 75mm & 100 mm
ACC-ARM-D23R
VESA STAND, 75mm & 100 mm



5

Healthcare Computing HID/AID Series

CH5-HID/AID Series +

AID-173SHR	17.3" 2th Gen Intel® Core™ Processor i7/i3/Celeron Fanless Medical Touch Panel PC with Full HD
AID-173SHW	17.3" 4th Gen Intel® ULT Core™ Processor i7/i5/i3 Fanless Medical Touch Panel PC with Full HD
AID-173M	17.3" Fanless Medical Touch Panel Monitor with Full HD



AID-173SHR

17.3" 2th Gen Intel® Core™ Processor
i7/i3/Celeron Fanless Medical Touch Panel PC with Full HD

- > 17.3" 16:9 1080P Display and Touch Panel
- > Onboard 2th Gen Intel® Core™ i7/i3/Celeron BGA Processor
- > Advanced VOIP Handset with Barcode Scanner
- > Medical Supporting Peripherals (MSR/ SCR/ RFID/ Barcode Scanner)
- > Anti-Microbial Finish
- > IP-65 on Front Panel Protection
- > System Fanless Design
- > Meet Hospital Safety
- > Dimensions: 448 (L) x 281 (H) x 45 (D) mm
- > Light Weight 4.7Kg

+ Spec

System	
Processor	Intel® Core™ i7/ i5/ i3 Processor Celeron Series
System Chipset	Intel® QM67 Express Chipset
System Memory	2 x 204-Pinup to 4 GB
I/O Chip	Nuvoton NTC6776F
Watchdog Timer	H/W Reset, 1sec. ~ 65535min.
H/W Status Monitor	Monitoring CPU & System Temperature and Voltage
SBC	AID-173SHR
Expansion	
Expansion	3 x Mini PCIe
Storage	
Storage	1 x 2.5" Drive Bay
I/O	
USB	4 x USB 2.0
Com Port	1 x RS-232 1 x RS-232/422/485
Other	1 x HDMI Output 1 x Display Output 1 x Earphone 1 x Mic
Display	
Chipset	Intel® QM67 Chipset Integrated Supports dual display
Resolution	DP:Max. resolution 2560x1600 HDMI:Max. resolution 1920x1080
Audio	
Chipset	Realtek ALC892
Audio Interface	Mic-In and Line-Out
Audio Amplifier	Anpec APA4863RI-TRG
Speaker Output	2 x 2W
Ethernet	
Chipset	1 x Intel® 82579LM
Ethernet Interface	10/100/1000 Base-Tx GbE compatible
Lan Port	1 x RJ-45
Mechanical & Environmental	
Operating Temp	0°C ~ 40°C (32°F ~ 104°F)
Storage Temp	-20 ~ 65°C (-4 ~ 149°F)
Operating Humidity	20% ~ 80%
Weight	4.7Kgs
Dimension (L x W x H)	505 x 336 x 54.5mm
Vibration Test	With SSD/mSATA : 1.5Grms, IEC 60068-2-64, Random, 5 ~ 500Hz, 30min/axis
Shock Test	With CF/SSD : 10Grms, IEC 60068-2-27, Half Sine, 11ms
System Fan	Fanless
Construction - Front	White Plastic
Construction - Rear	White Plastic
Finishing	Anti-microbial
Certifications	
Certification Information	CE FCC Class B UL
Software Support	



OS Information	Win XP Win 7 Win 8 Linux
Power Requirement	
Power Connector	DC Jack
Power Requirement	+12V ~ +19V
Power Mode	AT/ATX (ATX is default setting)
Adapter	Input: 100 ~ 240 Vac / 50~ 60Hz; Output 65W Adapter (19V / 3.43A Adapter)
Panel	
LCD Size	17.3"
Display Type	Full HD
Resolution	1920x1080
Pixel pitch	0.1989 (H) x 0.1989 (V) mm
Luminance	300 Cd/m ²
Contrast ratio	500~650
Viewing angle	Horizontal 60-70; Vertical 50-60 Deg.
Response time	TR 2-8 ms; TF 6-12 ms
Backlight	LED
Touch Type	5 Wires resistive
Touch Light Transmission	80% +/- 3%
Touch Controller	Onboard USB touch (EETI)

Ordering

AID-173SHR01-S01R
Intel® Core™ i7-2610UE Processor/320GB Hard Drive/2GB DDR3 Memory/MSR/SCR/Rfid/Handset/19V Adapter

AID-173SHR02-S01R
Intel® Core™ i3-2340UE Processor/320GB Hard Drive/2GB DDR3 Memory/MSR/SCR/Rfid/Handset/19V Adapter

AID-173SHR03-S01R
Intel® Celeron® 827E Processor/320GB Hard Drive/2GB DDR3 Memory/MSR/SCR/Rfid/Handset/19V Adapter

AID-173SHR04-S01R
Intel® Celeron® 847E Processor/320GB Hard Drive/2GB DDR3 Memory/MSR/SCR/Rfid/Handset/19V Adapter



AID-173SHW

17.3" 4th Gen Intel® ULT Core™ Processor i7/i5/i3
Fanless Medical Touch Panel PC with Full HD

- > 17.3" 16:9 1080P Display and Touch Panel
- > Onboard 4th Gen Intel® ULT Core™ i5 4300U 1.9GHz BGA Processor
- > Choose Among Resistive Touch Panel and Projected Capacitive Touch Panel
- > Optional TV Function
- > Advanced VOIP Handset with Barcode Scanner
- > Medical Supporting Peripherals (MSR/ SCR/ RFID/ Barcode Scanner)
- > Anti-Microbial Finish
- > IP-65 on Front Panel Protection
- > System Fanless Design
- > Dimensions: 448 (L) x 281 (H) x 45 (D) mm
- > Light Weight 4.7Kg

+ Spec

System	
Processor	Intel® Core™ i7/ i5/ i3 Processor
System Chipset	Intel® QM87 Express Chipset
System Memory	1 x 204-Pin up to 8 GB
Watchdog Timer	H/W Reset, 1sec. ~ 65535min.
H/W Status Monitor	Monitoring CPU & System Temperature and Voltage
SBC	AID-173SHW
Expansion	
Expansion	2 x Mini PCIe 1 x Mini PCIe Supports mSATA
Storage	
Storage	1 x 2.5" Drive Bay
I/O	
USB	1 x USB 3.0 3 x USB 2.0
SATA	1 x SATA III
Com Port	1 x RS-232 1 x RS-232/422/485
Other	1 x HDMI Input 1 x HDMI Output 1 x Earphone 1 x Mic
Display	
Chipset	Intel® QM87 Chipset Integrated Supports triple display
Resolution	VGA:Max. resolution 2048x1536 LVDS:Max. resolution 1920x1200
Audio	
Chipset	Realtek ALC892
Audio Interface	Mic-In and Line-Out
Speaker Output	2 x 2W
Ethernet	
Chipset	Intel WGH218LM
Ethernet Interface	10/100/1000 Base-Tx GbE compatible
Lan Port	1 x RJ-45
Mechanical & Environmental	
Operating Temp	0°C ~ 40°C (32°F ~ 104°F)
Storage Temp	-20 ~ 65°C (-4 ~ 149°F)
Operating Humidity	20% ~ 80%
Weight	4.7Kgs
Dimension (L x W x H)	505 x 336 x 54.5mm
Vibration Test	With SSD/mSATA : 1.5Grms, IEC 60068-2-64, Random, 5 ~ 500Hz, 30min/axis
Shock Test	With CF/SSD : 10Grms, IEC 60068-2-27, Half Sine, 11ms
System Fan	Fanless
Construction - Front	White Plastic
Construction - Rear	White Plastic
Finishing	Anti-microbial
Certifications	
Certification Information	CE FCC Class B
Software Support	



OS Information	Win 7 Win 8 Linux
Power Requirement	
Power Connector	DC Jack
Power Requirement	+12V ~ +19V
Power Mode	AT/ATX (ATX is default setting)
Adapter	Input: 100 ~ 240 Vac / 50~ 60Hz; Output 65W Adapter (19V / 3.43A Adapter)
Panel	
LCD Size	17.3"
Display Type	Full HD
Resolution	1920x1080
Pixel pitch	0.1989 (H) x 0.1989 (V) mm
Luminance	300 Cd/m2
Contrast ratio	500~650
Viewing angle	Horizontal 60-70; Vertical 50-60 Deg.
Response time	TR 2-8 ms; TF 6-12 ms
Backlight	LED
Touch Type	5 Wires resistive & Projective Capacitive
Touch Light Transmission	80% +/- 3%
Touch Controller	Onboard USB touch (EETI)

Ordering

- AID-173SHW01-S01R
Resistive Touch/Intel® Core™ i7-4650U Processor/32GB SSD/2GB DDR3 Memory/MSR/SCR/Rfid/Handset/19V Adapter
- AID-173SHW01-S02R
PCap Touch/Intel® Core™ i7-4650U Processor/32GB SSD/2GB DDR3 Memory/MSR/SCR/Rfid/Handset/19V Adapter
- AID-173SHW02-S01R
Resistive Touch/Intel® Core™ i5-4300U Processor/32GB SSD/2GB DDR3 Memory/MSR/SCR/Rfid/Handset/19V Adapter
- AID-173SHW02-S02R
Pcap Touch/Intel® Core™ i5-4300U Processor/32GB SSD/2GB DDR3 Memory/MSR/SCR/Rfid/Handset/19V Adapter
- AID-173SHW03-S01R
Resistive Touch/Intel® Core™ i3-4010U Processor/32GB SSD/2GB DDR3 Memory/MSR/SCR/Rfid/Handset/19V Adapter
- AID-173SHW03-S02R
PCap Touch/Intel® Core™ i3-4010U Processor/32GB SSD/2GB DDR3 Memory/MSR/SCR/Rfid/Handset/19V Adapter



AID-173M

17.3" Fanless Medical Touch Panel Monitor with Full HD

- > Resistive Touch Screen
- > HDMI Input/ USB Ports/ COM Ports/ 2.0MP Webcam/ Side Mic and Headphone Jacks
- > IP-65 on Front Panel Protection
- > System Fan-Less Design
- > Dimensions (W x D x H): 505mm x 336mm x 54.5mm
- > Light Weight 4.5Kg

Spec

System	
SBC	AID-173M
Expansion	
Expansion	2 x Mini PCIe
I/O	
USB	3 x USB 2.0 1 x USB Type B
Com Port	1 x RS-232 1 x RS-232/422/485
Other	2 x HDMI Input 1 x Earphone 1 x Mic
MIO	2 x Mini Card
Display	
Resolution	HDMI:Max. resolution 1920x1080
Audio	
Audio Amplifier	Anpec APA4863RI-TRG
Speaker Output	2 x 2W
Mechanical & Environmental	
Operating Temp	0°C ~ 40°C (32°F ~ 104°F)
Storage Temp	-20 ~ 65°C (-4 ~ 149°F)
Operating Humidity	20% ~ 80%
Weight	4.5Kgs
Dimension (L x W x H)	505 x 336 x 54.5mm
Vibration Test	With SSD/mSATA : 1.5Grms, IEC 60068-2-64, Random, 5 ~ 500Hz, 30min/axis
Shock Test	With CF/SSD : 10Grms, IEC 60068-2-27, Half Sine, 11ms
System Fan	Fanless
Construction - Front	White Plastic
Construction - Rear	White Plastic
Finishing	Anti-microbial (Optional)
Certifications	
Certification Information	CE FCC Class B
Power Requirement	
Power Connector	DC Jack
Power Requirement	+12V ~ +19V
Power Mode	AT/ATX (ATX is default setting)
Adapter	Input: 100 ~ 240 Vac / 50~ 60Hz; Output 65W Adapter (19V / 3.43A Adapter)
Panel	
LCD Size	17.3"
Display Type	Full HD
Resolution	1920x1080
Pixel pitch	0.1989 (H) x 0.1989 (V) mm
Luminance	300 Cd/m2
Contrast ratio	500~650
Viewing angle	Horizontal 60-70; Vertical 50-60 Deg.
Response time	TR 2-8 ms; TF 6-12 ms
Backlight	LED
Touch Type	5 Wires resistive
Touch Light Transmission	80% +/- 3%



Touch Controller

Onboard USB touch (EETI)

 Ordering

AID-173M-S01R

17.3"/ Power Bd/ AV2362-01/ HDMI Input/ Camera/ 19V Adapter



6

Self-service Touch Panel PC PPC/SID Series

CH6-PPC/SID Series

PPC-1529	15" Intel® Celeron® SoC Processor J1900 Fanless Plastic Chassis Touch Panel PC
PPC-1729	17" Intel® Celeron® SoC Processor J1900 Fanless Plastic Chassis Touch Panel PC
PPC-2129	21.5" Intel® Celeron® SoC Processor J1900 Fanless Plastic Chassis Touch Panel PC
SID-10W9	Intel® Atom™ Z3735F 10.1" Semi Industrial Ultra Slim Panel PC
SID-15W9	Intel® Atom™ Z3735F 15.6" Semi Industrial Ultra Slim Panel PC
SID-21W9	Intel® Atom™ Z3735F 21.5" Semi Industrial Ultra Slim Panel PC



PPC-1529

15" Intel® Celeron® SoC Processor J1900 Fanless Plastic Chassis Touch Panel PC

- > Onboard Intel® Celeron® SoC J1900 2.0GHz BGA Processor
- > 1 SODIMM up to 8GB DDR3L SDRAM
- > 1 CF, 2 USB, 1 COM & 1 Mini-PCle
- > 2 Intel Gigabit LAN, 2W Amplifier
- > Timer-Power-On
- > Fanless Operation, VESA Compliance
- > Programmable Function Key
- > IP-65 Compliant Front Panel
- > VESA Compliance

+ Spec

System	
Processor	Intel® Celeron® J1900 4-Core 2.0GHz processor
System Chipset	Intel® Valleyview SoC
System Memory	1 x 204-Pin DDR3L 1066/1333MHz SO-DIMM up to 8 GB
I/O Chip	EC ITE IT8528E
Watchdog Timer	H/W Reset, 1sec. ~ 65535sec. and 1sec./step
H/W Status Monitor	Monitoring System Temperature, Voltage and FAN Status with Auto Throttling Control
SBC	EBM-BYT
Expansion	
Expansion	1 x Mini PCIe Supports mSATA
Storage	
Storage	1 x CompactFlash Type III Socket 1 x 2.5" Drive Bay
I/O	
USB	1 x USB 3.0 3 x USB 2.0
Com Port	1 x RS-232/422/485
Display	
Chipset	Intel® Valleyview SoC integrated Graphics Supports dual display
Resolution	DP:Max. resolution 2560x1080@ 60Hz HDMI:Max. resolution 1920x1200@ 60Hz
Audio	
Chipset	Realtek ALC892 supports 5.1-CH
Audio Interface	Line-Out
Speaker Output	2 x 2W
Ethernet	
Chipset	2 x Intel® I210IT
Ethernet Interface	10/100/1000 Base-Tx GbE compatible
Lan Port	2 x RJ-45
Mechanical & Environmental	
Operating Temp	0°C ~ 40°C (32°F ~ 104°F)
Storage Temp	-10°C ~ 50°C (14°F ~ 122°F)
Operating Humidity	0% ~ 90% Relative Humidity, Non-condensing
Weight	4.9Kgs
Dimension (L x W x H)	351 X 319 X 54mm
Vibration Test	With SSD/mSATA : 1.5Grms, IEC 60068-2-64, Random, 5 ~ 500Hz, 30min/axis
Shock Test	With CF/SSD : 10Grms, IEC 60068-2-27, Half Sine, 11ms
System Fan	Fanless
Construction - Front	White Plastic
Construction - Rear	Gary Plastic
Certifications	
Certification Information	CE FCC Class B
Software Support	
OS Information	Win 7 Win 8 Linux
Power Requirement	
Power Connector	Lockable DC Jack



Power Requirement	+12V ~ +26V
Power Mode	AT/ATX (ATX is default setting)
Adapter	Input: 100 ~ 240Vac/ 50 ~ 60Hz Output: 60W Adapter (12V @ 5A Adapter)
Panel	
LCD Size	15", 4:3
Display Type	XGA
Resolution	1024x768
Pixel pitch	0.297mm (H) x 0.297mm (V)
Luminance	250 cd/m2
Contrast ratio	700
Viewing angle	70(U), 70(D), 80(L), 80(R)
Response time	16 ms
Backlight	LED
Touch Type	5 Wires resistive
Touch Light Transmission	80 %

+ Ordering

PPC-1529-190-A1R
15" XGA J1900 2GHz/2GR/32GSSD/2LAN

ACC-WIFI-PCIE-8R
WM5201 802.11b/g/n Mini Card w/ Antenna for PPC Series

ACC-ARM-D1R
VESA STAND, 75 & 100mm

ACC-CF-XX
CompactFlash Card Series (xx=Capacity, Capacity Option: 128, 256, 512MB, 1, 2, 4, 8GB)



PPC-1729

17" Intel® Celeron® SoC Processor J1900 Fanless Plastic Chassis Touch Panel PC

- > Onboard Intel® Celeron® SoC J1900 2.0GHz BGA Processor
- > 1 SODIMM up to 8GB DDR3L SDRAM
- > 1 CF, 2 USB, 1 COM & 1 Mini-PCle
- > 2 Intel Gigabit LAN, 2W Amplifier
- > Timer-Power-On
- > Fanless Operation, VESA Compliance
- > Programmable Function Key
- > IP-65 Compliant Front Panel
- > VESA Compliance

+ Spec

System	
Processor	Intel® Celeron® J1900 4-Core 2.0GHz processor
System Chipset	Intel® Valleyview SoC
System Memory	1 x 204-Pin DDR3L 1066/1333MHz SO-DIMM up to 8 GB
I/O Chip	EC ITE IT8528E
Watchdog Timer	H/W Reset, 1sec. ~ 65535sec. and 1sec./step
H/W Status Monitor	Monitoring System Temperature, Voltage and FAN Status with Auto Throttling Control
SBC	EBM-BYT
Expansion	
Expansion	1 x Mini PCIe Supports mSATA
Storage	
Storage	1 x CompactFlash Type III Socket 1 x 2.5" Drive Bay
I/O	
USB	1 x USB 3.0 3 x USB 2.0
Com Port	1 x RS-232/422/485
Display	
Chipset	Intel® Valleyview SoC integrated Graphics Supports dual display
Resolution	DP:Max. resolution 2560x1080@ 60Hz HDMI:Max. resolution 1920x1200@ 60Hz
Audio	
Chipset	Realtek ALC892 supports 5.1-CH
Audio Interface	Line-Out
Speaker Output	2 x 2W
Ethernet	
Chipset	2 x Intel® I210IT
Ethernet Interface	10/100/1000 Base-Tx GbE compatible
Lan Port	2 x RJ-45
Mechanical & Environmental	
Operating Temp	0°C ~ 40°C (32°F ~ 104°F)
Storage Temp	-10°C ~ 50°C (14°F ~ 122°F)
Operating Humidity	0% ~ 90% Relative Humidity, Non-condensing
Weight	5.9Kgs
Dimension (L x W x H)	391.5 x 364.5 x 59 mm
Vibration Test	With SSD/mSATA : 1.5Grms, IEC 60068-2-64, Random, 5 ~ 500Hz, 30min/axis
Shock Test	With CF/SSD : 10Grms, IEC 60068-2-27, Half Sine, 11ms
System Fan	Fanless
Construction - Front	White Plastic
Construction - Rear	Gary Plastic
Certifications	
Certification Information	CE / FCC Class B
Software Support	
OS Information	Win 7 Win 8 Linux
Power Requirement	



Power Connector	Lockable DC Jack
Power Requirement	+12V ~ +26V
Power Mode	AT/ATX (ATX is default setting)
Adapter	Input: 100 ~ 240Vac/ 50 ~ 60Hz Output: 60W Adapter (12V @ 5A Adapter)
Panel	
LCD Size	17", 4:3
Display Type	SXGA
Resolution	1280x1024
Pixel pitch	0.264mm (H) x 0.264mm (V)
Luminance	350 cd/m2
Contrast ratio	800
Viewing angle	80 (U), 80 (D), 85 (L), 85 (R)
Response time	30 ms
Backlight	LED
Touch Type	5 Wires resistive
Touch Light Transmission	80%

+ Ordering

PPC-1729-190-A1R
17" SXGA J1900 2GHz/2GR/32GSSD/2LAN

ACC-WIFI-PCIE-8R
WM5201 802.11b/g/n Mini Card w/ Antenna for PPC Series

ACC-ARM-D1R
VESA STAND, 75 & 100mm

ACC-CF-XX
CompactFlash Card Series (xx=Capacity, Capacity Option: 128, 256, 512MB, 1, 2, 4, 8GB)



PPC-2129

**21.5" Intel® Celeron® SoC Processor J1900
Fanless Plastic Chassis Touch Panel PC**

- > Onboard Intel® Celeron® SoC J1900 2.0GHz BGA Processor
- > 1 SODIMM up to 8GB DDR3L SDRAM
- > 1 CF, 2 USB, 1 COM & 1 Mini-PCle
- > 2 Intel Gigabit LAN, 2W Amplifier
- > Timer-Power-On
- > Fanless Operation, VESA Compliance
- > Programmable Function Key
- > IP-65 Compliant Front Panel
- > VESA Compliance

+ Spec

System	
Processor	Intel® Celeron® J1900 4-Core 2.0GHz processor
System Chipset	Intel® Valleyview SoC
System Memory	1 x 204-Pin DDR3L 1066MHz SO-DIMM up to 8 GB 204-Pin DDR3L 1600MHz SO-DIMM Processor J1900 only support 1333MHz
I/O Chip	EC ITE IT8528E
Watchdog Timer	H/W Reset, 1sec. ~ 65535sec. and 1sec./step
H/W Status Monitor	Monitoring System Temperature, Voltage and FAN Status with Auto Throttling Control
SBC	EBM-BYT
Expansion	
Expansion	1 x Mini PCIe Supports mSATA
Storage	
Storage	1 x CompactFlash Type VII Socket 1 x 2.5" Drive Bay
I/O	
USB	3 x USB 2.0 1 x USB 3.0
Com Port	1 x RS-232/422/485
Display	
Chipset	Intel® Valleyview SoC integrated Graphics Supports dual display
Resolution	DP:Max. resolution 2560x1080@ 60Hz HDMI:Max. resolution 1920x1200@ 60Hz
Audio	
Chipset	Realtek ALC892 supports 5.1-CH
Audio Interface	Line-Out
Speaker Output	2 x 2W
Ethernet	
Chipset	2 x Intel® I210IT
Ethernet Interface	10/100/1000 Base-Tx GbE compatible
Lan Port	2 x RJ-45
Mechanical & Environmental	
Operating Temp	0°C ~ 40°C (32°F ~ 104°F)
Storage Temp	-10°C ~ 50°C (14°F ~ 122°F)
Operating Humidity	0% ~ 90% Relative Humidity, Non-condensing
Weight	7.2Kgs
Dimension (L x W x H)	542 x 382 x 63mm
Vibration Test	With SSD/mSATA : 1.5Grms, IEC 60068-2-64, Random, 5 ~ 500Hz, 30min/axis
Shock Test	With CF/SSD : 10Grms, IEC 60068-2-27, Half Sine, 11ms
System Fan	Fanless
Construction - Front	White Plastic
Construction - Rear	Gary Plastic
Certifications	
Certification Information	CE FCC Class B
Software Support	
OS Information	Win 7 Win 8 Linux
Power Requirement	



Power Connector	Lockable DC Jack
Power Requirement	+12V ~ +26V
Power Mode	AT/ATX (ATX is default setting)
Adapter	Input: 100 ~ 240Vac/ 50 ~ 60Hz Output: 60W Adapter (12V @ 5A Adapter)
Panel	
LCD Size	21.5"
Display Type	Full HD
Resolution	1920x1080
Pixel pitch	0.248mm (H) x 0.248mm (V)
Luminance	250 cd/m2
Contrast ratio	1000
Viewing angle	80 (U), 80 (D), 85 (L), 85 (R)
Response time	5 ms
Backlight	LED
Touch Type	5 Wires resistive
Touch Light Transmission	80%

+ Ordering

PPC-2129-190-A1R
21.5" FHD J1900 2GHz/2GR/32GSSD/2LAN

ACC-WIFI-PCIE-8R
WM5201 802.11b/g/n Mini Card w/ Antenna for PPC Series

ACC-ARM-D1R
VESA STAND, 75 & 100mm

ACC-CF-XX
CompactFlash Card Series

(xx=Capacity, Capacity Option: 128, 256, 512MB, 1, 2, 4, 8GB)



SID-10W9

Intel Atom Z3735F 10.1" Semi Industrial Ultra Slim Panel PC

- > Onboard Intel Atom Z3735F 1.33GHz Processor
- > Onboard 2GB DDR3L Memory
- > Onboard 32GB eMMC
- > Projective Capacitive Multi-Touch
- > IP65 Front Panel
- > Membrane Power Button
- > Onboard WIFI IEEE802.11 b/g/n +BT4.0

+ Spec

System	
Processor	Intel Atom Z3735F 1.33GHz Processor
System Memory	Onboard 2GB DDR3L
I/O Chip	ENE IO3737LU
Storage	
Storage	Onboard 32GB eMMC
I/O	
USB	2 x USB 2.0
Antenna	1 x Internal Antenna
HDMI	1 X HDMI Output
Display	
Chipset	Intel Gen7 HD Graphic
Resolution	HDMI: Max. Resolution 1920 x 1080 @ 60 Hz
Audio	
Chipset	Realtek ALC5645-CGT
Audio Interface	Line-Out
Speaker Output	2 x 1W (Optional)
Ethernet	
Chipset	Microchip LAN9512 10/100 Ethernet
Ethernet Interface	1 x RJ45
Mechanical & Environmental	
Power Requirement	+19V DCin
Power Type	ATX
Operating Temp	0°C ~ 40°C (32°F ~ 104°F)
Storage Temp	-10°C ~ 60°C (14°F ~ 140°F)
Operating Humidity	0% ~ 90% Relative Humidity, Non-Condensing
Weight	1.5KG
Construction	Metal
Mounting Kit	Wall / Stand / VESA 75 x75 mm
Vibration Test	IEC 60068-2-64, Random, 5~500Hz, 1HR/axis
Shock Test	50Grms, IEC 60068-2-27, Half-Sine, 11ms
System Fan	Fanless
Dimensions	255.2 x 169.4 x 33.3 mm
Certifications	
Certification Information	CE, FCC Class A
Software Support	
OS Information	Win8, Win10, Android, Linux
Power Requirement	
Adapter	Input: 100~240 Vac/50~60 Hz; Output: 65W Adapter (19V @ 3.42A Adapter)
Panel	
LCD Size	10.1", 16:10
Display Type	WXGA
Resolution	1280 x 800
Pixel pitch	0.1695 x 0.1695 mm
Luminance	350 cd/m ²
Contrast ratio	800
Viewing angle	85 (U), 85 (D), 85 (L), 85 (R)
Response time	30 ms



Backlight	LED
Touch Type	Projective Capacitive
Touch Light Transmission	86%
Touch Controller	USB Touch
Wireless Communication	
WLAN	IEEE 802.11 b/g/n
Bluetooth	Bluetooth v4.0



SID-15W9

Intel Atom Z3735F 15.6" Semi Industrial Ultra Slim Panel PC

- > Onboard Intel Atom Z3735F 1.33GHz Processor
- > Onboard 2GB DDR3L Memory
- > Projective Capacitive Multi-Touch
- > IP65 Rated Front Panel
- > Membrane Button for Power On/Off, Volume and Brightness
- > Onboard WIFI 802.11 b/g/n with Internal Antenna

+ Spec

System	
Processor	Intel Atom Z3735F 1.33GHz Processor
System Memory	Onboard 2GB DDR3L
I/O Chip	ENE IO3737LU
Expansion	
Expansion	1 x Line-Out
Storage	
Storage	1 Onboard 32GB eMMC
I/O	
USB	2 x USB 2.0
Com Port	1 x RS485
Other	1 x HDMI Output
MIO	1 Onboard WIFI 802.11 b/g/n
Display	
Chipset	Intel Gen7 HD Graphic
Resolution	HDMI: Max. Resolution 1920 x 1080 @ 60 Hz
Audio	
Chipset	Realtek ALC5645-CGT
Audio Interface	Line-Out
Speaker Output	2 x 1W (Optional)
Ethernet	
Chipset	1 x Microchip LAN9512 10/100 Ethernet
Mechanical & Environmental	
Power Requirement	DC Jack, +19V
Power Type	ATX
Operating Temp	0°C ~ 40°C (32°F ~ 104°F)
Storage Temp	-10°C ~ 60°C (14°F ~ 140°F)
Operating Humidity	0% ~ 90% Relative Humidity, Non-Condensing
Weight	4KG
Construction	Metal
Mounting Kit	Wall / Stand / VESA 100x100 mm
Vibration Test	IEC 60068-2-64, Random, 5~500Hz, 1HR/axis
Shock Test	50Grms, IEC 60068-2-27, Half-Sine, 11ms
System Fan	Fanless
Dimensions	391 x 249 x 37 mm
Certifications	
Certification Information	CE, FCC Class A
Software Support	
OS Information	Win8, Android, Linux
Power Requirement	
Adapter	Input: 100~240 Vac/50~60 Hz Output: 65W Adapter (19V @ 3.42A Adapter)
Panel	
LCD Size	15.6" 16:9
Display Type	HD
Resolution	1366 x 768
Pixel pitch	0.252 x 0.252 mm
Luminance	220 cd/m ²
Contrast ratio	500



Viewing angle	20 (U), 45 (D), 45(L), 45 (R)
Response time	7 ms
Backlight	LED
Touch Type	Projected Capacitive
Touch Light Transmission	86%
Touch Controller	USB Touch



SID-21W9

Intel® Atom Z3735F 21.5" Semi Industrial Ultra Slim Panel PC

- > Onboard Intel® Atom Z3735F 1.33GHz Processor
- > Onboard 2GB DDR3L Memory
- > Onboard 32GB eMMC
- > Projective Capacitive Multi-Touch
- > IP65 Front Panel
- > Membrane button for Power On/Off, Volume and backlight Brightness
- > Onboard WIFI IEEE802.11 b/g/n +BT4.0

+ Spec

System	
Processor	Intel Atom® Z3735F 1.33GHz Processor
System Memory	Onboard 2GB DDR3L
I/O Chip	ENE IO3737LU
Storage	
Storage	Onboard 32GB eMMC
I/O	
USB	2 x USB 2.0
Com Port	1 x RS485 (optional RS-232)
HDMI	1 x HDMI
Display	
Chipset	Intel Gen7 HD Graphic
Resolution	HDMI: Max. Resolution 1920 x 1080 @ 60 Hz
Audio	
Chipset	Realtek ALC5645-CGT
Audio Interface	Line-Out
Speaker Output	2 x 1W (Optional)
Ethernet	
Chipset	Microchip LAN9512 10/100MB Ethernet
Ethernet Interface	1 x RJ45
Mechanical & Environmental	
Power Requirement	+19V DCin
Power Type	ATX
Operating Temp	0°C ~ 40°C (32°F ~ 104°F)
Storage Temp	-10°C ~ 60°C (14°F ~ 140°F)
Operating Humidity	0% ~ 90% Relative Humidity, Non-Condensing
Weight	6KG
Construction	Metal
Mounting Kit	Wall / Stand / VESA 100x100 mm
Dimension (L x W x H)	505 x 303.3 x 41.7mm
Vibration Test	IEC 60068-2-64, Random, 5~500Hz, 1HR/axis
Shock Test	50Grms, IEC 60068-2-27, Half-Sine, 11ms
System Fan	Fanless
Dimensions	505 x 303.3 x 41.7 mm
IP Rating	front panel IP65
Certifications	
Certification Information	CE, FCC Class A
Software Support	
OS Information	Win8, win10, Android, Linux
Power Requirement	
Power Connector	DC Jack
Power Requirement	+19V DC in
Adapter	Input: 100~240 Vac/50~60 Hz Output: 65W Adapter (19V @ 3.42A Adapter)
Panel	
LCD Size	21.5" 16:9
Display Type	Full HD
Resolution	1920 x 1080
Pixel pitch	0.24795 x 0.24795 mm



Luminance	250 cd/m ²
Contrast ratio	2000
Viewing angle	89 (U), 89 (D), 89 (L), 89 (R)
Response time	35 ms
Backlight	LED
Touch Type	Projected Capacitive hardness 6H
Touch Light Transmission	86%
Touch Controller	USB Touch
Wireless Communication	
WLAN	IEEE 802.11 b/g/n
Bluetooth	Bluetooth v4.0

7

POS/Retail Touch Panel PC Rity Series

CH7-Rity Series

Rity82	8" WSVGA Flat Touch Panel PC with Intel® Atom™ Processor
Rity102	10.1" WXGA Flat Touch Panel PC with Intel® Atom™ Processor
Rity122	12.1" XGA Flat Touch Panel PC with Intel® Atom™ Processor
Rity152	15" XGA Flat Touch Panel PC with Intel® Atom™ Processor
RITY8R1	8" Android POS with Freescale i.MX6 Cortex-A9 Dual lite/ Quad 1GHz CPU
RITY10R1	10" Android POS with Freescale i.MX6 Cortex-A9 Dual lite/Quad 1GHz CPU
RITY12R	12" Android POS with Freescale i.MX6 Cortex-A9 Dual lite/Quad 1GHz CPU
RITY15R	15" Android POS with Freescale i.MX6 Cortex-A9 Dual lite/Quad 1GHz CPU



RITY82

8" WSVGA Flat Touch Panel PC Intel® Atom™ Processor with Intel® Valleyview SoC

- > Intel® Atom™ E3845 1.91GHz CPU
- > 1 SODIMM up to 8 GB DDR3L SDRAM
- > 3 x RS-232, COM 1&2 Support RS-422/485
- > 2 x RJ-45, 3 x USB 2.0, 3 x USB 3.0 ,1 x RJ-11
- > IP-65 Compliant Front Panel & IP-41 Rear
- > Fanless Operation, VESA Compliance
- > Easy I/O Setting by BIOS

+ Spec

System	
Processor	Intel® Atom™ E3845 4-Core 1.91GHz processor
System Chipset	Intel® Valleyview SoC
System Memory	1 x 204-Pin DDR3L 1066MHz SO-DIMM up to 8 GB
I/O Chip	EC ITE IT8528E
Watchdog Timer	H/W Reset: 1sec.~255min. and 1sec. or 1min./step
H/W Status Monitor	Monitoring System Temperature, Voltage and FAN Status with Auto Throttling Control
SBC	APC-BYTP0S
Expansion	
Expansion	1 x Mini PCIe Supports mSATA
Storage	
Storage	1 x mSATA
I/O	
USB	1 x USB 2.0 3 x USB 3.0
Com Port	2 x RS-232/422/485 (BIOS)
Display	
Chipset	Intel® Pineview Integrated Graphics Supports dual display
Resolution	LVDS:Max. resolution 1024x600@ 60Hz HDMI:Max. resolution 1920x1080@ 60Hz
Audio	
Chipset	Intel® Valleyview SoC integrated supports 2-CH
Speaker Output	2 x 2W
Ethernet	
Chipset	2 x Intel® I210AT
Ethernet Interface	10/100/1000 Base-Tx GbE compatible
Lan Port	2 x RJ-45
Mechanical & Environmental	
Operating Temp	0°C ~ 35°C (32°F ~ 95°F)
Storage Temp	-10°C ~ 60°C (14°F ~ 140°F)
Operating Humidity	0% ~ 90% Relative Humidity, Non-condensing
Weight	4.9Kgs
Dimension (L x W x H)	231.7 X 149.5 X 42mm
Vibration Test	With SSD/mSATA : 1.5Grms, IEC 60068-2-64, Random, 5 ~ 500Hz, 30min/axis
Shock Test	With CF/SSD : 10Grms, IEC 60068-2-27, Half Sine, 11ms
Construction - Front	Black Coverlens
Construction - Rear	Black
Certifications	
Certification Information	CE FCC Class A VCCI
Software Support	
OS Information	Win 7 Win 8 POS Ready Linux Android
Power Requirement	
Power Connector	minidin 4P for DC in w/ lock type



Power Requirement	+19V ~ +24V
Power Mode	AT/ATX (ATX is default setting)
Adapter	Input: 100 ~ 240Vac/ 50 ~ 60Hz Output: 60W Adapter (12V @ 5A Adapter)
Panel	
LCD Size	8" , 16:9
Display Type	WSVGA
Resolution	1024x600
Pixel pitch	262K color by 6 bit RGB signal
Luminance	500 cd/m ²
Contrast ratio	700
Viewing angle	75(H) X 65(V)
Response time	8 ms
Backlight	LED
Touch Type	5 Wires resistive /PCT
Touch Light Transmission	RES 75 % / PCT 90%
Touch Controller	Onboard USB touch (PenMount) / USB touch (EETI)



RITY102

10.1" WXGA Flat Touch Panel PC Intel® Atom™ Processor with Intel® Valleyview SoC

- > Intel® Atom™ E3845 1.91GHz CPU
- > 1 SODIMM up to 8 GB DDR3L SDRAM
- > 3 x RS-232, COM 1&2 Support RS-422/485
- > 2 x RJ-45, 3 x USB 2.0, 3 x USB 3.0 ,1 x RJ-11
- > IP-65 Compliant Front Panel & IP-41 Rear
- > Fanless Operation, VESA Compliance
- > Easy I/O Setting by BIOS

+ Spec

System	
Processor	Intel® Atom™ E3845 4-Core 1.91GHz processor
System Chipset	Intel® Valleyview SoC
System Memory	1 x 204-Pin DDR3L 1066MHz SO-DIMM up to 8 GB
I/O Chip	EC ITE IT8528E
Watchdog Timer	H/W Reset: 1sec.~255min. and 1sec. or 1min./step
H/W Status Monitor	Monitoring System Temperature, Voltage and FAN Status with Auto Throttling Control
SBC	APC-BYTPOS
Expansion	
Expansion	1 x Mini PCIe Supports mSATA
Storage	
Storage	1 x optional SATA Slim SSD 1 x mSATA
I/O	
USB	1 x USB 2.0 3 x USB 3.0
Com Port	2 x RS-232/422/485 (BIOS) 1 x RS-232
Display	
Chipset	Intel® Cedarview Integrated Graphics Supports dual display
Resolution	LVDS:Max. resolution 1366x768@ 60Hz HDMI:Max. resolution 1920x1080@ 60Hz
Audio	
Chipset	Intel® Valleyview SoC integrated supports 2-CH
Speaker Output	2 x 2W
Ethernet	
Chipset	2 x Intel® I210AT
Ethernet Interface	10/100/1000 Base-Tx GbE compatible
Lan Port	2 x RJ-45
Mechanical & Environmental	
Operating Temp	0°C ~ 35°C (32°F ~ 95°F)
Storage Temp	-10°C ~ 60°C (14°F ~ 140°F)
Operating Humidity	0% ~ 90% Relative Humidity, Non-condensing
Weight	4.9Kgs
Dimension (L x W x H)	260 X 178 X 42mm
Vibration Test	With SSD/mSATA : 1.5Grms, IEC 60068-2-64, Random, 5 ~ 500Hz, 30min/axis
Shock Test	With CF/SSD : 10Grms, IEC 60068-2-27, Half Sine, 11ms
System Fan	Fanless
Construction - Front	Black Coverlens
Construction - Rear	Black
Certifications	
Certification Information	CE FCC Class B VCCI
Software Support	
OS Information	Win 7 Win 8 POS Ready Linux Android
Power Requirement	



Power Connector	minidin 4P for DC in w/ lock type
Power Requirement	+19V ~ +24V
Power Mode	AT/ATX (ATX is default setting)
Adapter	Input: 100 ~ 240Vac/ 50 ~ 60Hz Output: 60W Adapter (12V @ 5A Adapter)
Panel	
LCD Size	10.1"
Display Type	WXGA
Resolution	1366x768
Pixel pitch	262K color by 6 bit RGB signal
Luminance	200 cd/m2
Contrast ratio	1300
Viewing angle	85(H) X 85(V)
Response time	8 ms
Backlight	LED
Touch Type	5 Wires resistive / PCT
Touch Light Transmission	RES 75 % / PCT 90%
Touch Controller	Onboard USB touch (PenMount) / USB touch (EETI)



RITY122

12.1" XGA Flat Touch Panel PC Intel® Atom™ Processor with Intel® Valleyview SoC

- > Intel® Atom™ E3845 1.91GHz CPU
- > 1 SODIMM up to 8 GB DDR3L SDRAM
- > 3 x RS-232, COM 1&2 Support RS-422/485
- > 2 x RJ-45, 3 x USB 2.0, 3 x USB 3.0 ,1 x RJ-11
- > 50000hrs. LED TFT LCD 50000hrs. LED TFT LCD
- > Fanless Operation, VESA Compliance
- > IP-65 Compliant Front Panel & IP-41 Rear
- > Swappable 2.5" HDD
- > Easy I/O Setting by BIOS
- > Support DC +24V Output (3-Pin 2A)
- > Audio Out

+ Spec

System	
Processor	Intel® Atom™ E3845 4-Core 1.91GHz processor
System Chipset	Intel® Valleyview SoC
System Memory	1 x 204-Pin DDR3L 1066MHz SO-DIMM up to 8 GB
I/O Chip	EC ITE IT8528E
Watchdog Timer	H/W Reset, 1sec. ~ 65535sec. and 1sec./step
H/W Status Monitor	Monitoring System Temperature, Voltage and FAN Status with Auto Throttling Control
SBC	APC-BYTP0S
Expansion	
Expansion	1 x Mini PCIe Supports mSATA
Storage	
Storage	1 x 2.5" Drive Bay 1 x mSATA
I/O	
USB	3 x USB 2.0 3 x USB 3.0
Com Port	2 x RS-232/422/485 (BIOS) 1 x RS-232
Display	
Chipset	Intel® Valleyview SoC integrated Graphics Supports dual display
Resolution	LVDS:Max. resolution 1024x768@ 60Hz HDMI:Max. resolution 1920x1080@ 60Hz
Audio	
Chipset	Intel® Valleyview SoC integrated supports 2-CH
Audio Interface	Line-Out
Speaker Output	2 x 2W
Ethernet	
Chipset	2 x Intel® I210AT
Ethernet Interface	10/100/1000 Base-Tx GbE compatible
Lan Port	2 x RJ-45
Mechanical & Environmental	
Operating Temp	0°C ~ 35°C (32°F ~ 95°F)
Storage Temp	-10°C ~ 60°C (14°F ~ 140°F)
Operating Humidity	0% ~ 90% Relative Humidity, Non-condensing
Weight	5 /with StandKgs
Dimension (L x W x H)	322 X 250 X 47mm
Vibration Test	With SSD/mSATA : 1.5Grms, IEC 60068-2-64, Random, 5 ~ 500Hz, 30min/axis
Shock Test	With CF/SSD : 10Grms, IEC 60068-2-27, Half Sine, 11ms
System Fan	Fanless
Construction - Front	Black Coverlens
Construction - Rear	Black
Certifications	
Certification Information	CE FCC Class B VCCI
Software Support	



OS Information	Win 7 Win 8 POS Ready Linux Android
Power Requirement	
Power Connector	minidin 4P for DC in w/ lock type
Power Requirement	+19V ~ +24V
Power Mode	AT/ATX (ATX is default setting)
Adapter	Input: 100 ~ 240Vac/ 50 ~ 60Hz Output: 60W Adapter (12V @ 5A Adapter) AC-DC Adapter AC-DC Adapter
Panel	
LCD Size	12.1", 4:3
Display Type	XGA
Resolution	1024 x 768
Pixel pitch	16.2M
Luminance	600 cd/m ²
Contrast ratio	700
Viewing angle	80(H) X 70(V)
Response time	8 ms
Backlight	LED
Touch Type	5 Wires resistive / PCT
Touch Light Transmission	RES 75% / PCT 90%
Touch Controller	Onboard USB touch (PenMount) / USB touch (EETI)



RITY152

15" XGA Flat Touch Panel PC Intel® Atom™ Processor with Intel® Valleyview SoC

- > Intel ATOM Quad Core E3845 1.91GHz
- > 1 SODIMM up to 8 GB DDR3L SDRAM
- > 3 x RS-232, COM 1&2 Support RS-422/485
- > 2 x RJ-45, 3 x USB 2.0, 3 x USB 3.0 ,1 x RJ-11
- > 50000hrs. LED TFT LCD 50000hrs. LED TFT LCD
- > Fanless Operation, VESA Compliance
- > IP-65 Compliant Front Panel & IP-41 Rear
- > Swappable 2.5" HDD
- > Easy I/O Setting by BIOS
- > Support DC +24V Output (3-Pin 2A)
- > Audio Out

+ Spec

System	
Processor	Intel® Atom™ E3845 4-Core 1.91GHz processor
System Chipset	Intel® Valleyview SoC
System Memory	1 x 204-Pin DDR3L 1066MHz SO-DIMM up to 8 GB
I/O Chip	EC ITE IT8528E
Watchdog Timer	H/W Reset, 1sec. ~ 65535sec. and 1sec./step
H/W Status Monitor	Monitoring System Temperature, Voltage and FAN Status with Auto Throttling Control
SBC	APC-BYTP0S
Expansion	
Expansion	1 x Mini PCIe Supports mSATA
Storage	
Storage	1 x 2.5" Drive Bay 1 x mSATA
I/O	
USB	3 x USB 3.0 3 x USB 2.0
Com Port	2 x RS-232/422/485 (BIOS) 1 x RS-232
Display	
Chipset	Intel® Valleyview SoC integrated Graphics Supports dual display
Resolution	LVDS:Max. resolution 1024x768@ 60Hz HDMI:Max. resolution 1920x1080@ 60Hz
Audio	
Chipset	Intel® Valleyview SoC integrated supports 5.1-CH
Audio Interface	Line-Out
Speaker Output	2 x 2W
Ethernet	
Chipset	2 x Intel® I210AT
Ethernet Interface	10/100/1000 Base-Tx GbE compatible
Lan Port	2 x RJ-45
Mechanical & Environmental	
Operating Temp	0°C ~ 35°C (32°F ~ 95°F)
Storage Temp	-10°C ~ 60°C (14°F ~ 140°F)
Operating Humidity	0% ~ 90% Relative Humidity, Non-condensing
Weight	6 /with StandKgs
Dimension (L x W x H)	362.1 X 290.08 X 51 mm
Vibration Test	With SSD/mSATA : 1.5Grms, IEC 60068-2-64, Random, 5 ~ 500Hz, 30min/axis
Shock Test	With CF/SSD : 10Grms, IEC 60068-2-27, Half Sine, 11ms
System Fan	Fanless
Construction - Front	Black Coverlens
Construction - Rear	Black
Certifications	
Certification Information	CE FCC Class B VCCI
Software Support	



OS Information	Win 8 Win 7 POS Ready Linux Android
Power Requirement	
Power Connector	minidin 4P for DC in w/ lock type
Power Requirement	+19V ~ +24V
Power Mode	AT/ATX (ATX is default setting)
Adapter	Input: 100 ~ 240Vac/ 50 ~ 60Hz Output: 60W Adapter (12V @ 5A Adapter)
Panel	
LCD Size	15", 4:3
Display Type	XGA
Resolution	1024x768
Pixel pitch	16.2M
Luminance	400 cd/m ²
Contrast ratio	700
Viewing angle	80(H) X 70(V)
Response time	8 ms
Backlight	LED
Touch Type	5 Wires resistive / PCT
Touch Light Transmission	RES 75% / PCT 90%
Touch Controller	Onboard USB touch (PenMount) / USB touch (EETI)



RITY8R1

8" Android POS

- > Freescale i.MX6 Cortex-A9 Dual lite/ Quad 1GHz CPU
- > Fanless Design
- > 4GB eMMC, up to 8GB eMMC
- > 1GB RAM (Dual Lite), up to 2GB RAM (Quad)
- > 5-wire RES Touch / PCAP Touch
- > 2x COM, 2x USB
- > Front IP-65 & Back IP-41
- > Support Cash Drawer (12V/24V)

+ Spec

System	
Processor	Freescale i.MX6 Cortex-A9 Dual lite/ Quad 1GHz CPU
System Memory	1GB RAM (Dual Lite), up to 2GB RAM (Quad)
Expansion	
Expansion	
Storage	
Storage	4GB eMMC, up to 8GB
I/O	
External I/O Connector	2 x USB2.0 1 x Micro USB OTG 2 x RS232 1 x Gb Ethernet 1 x Micro SD slot 1 x HDMI 1 x RJ11 1 x DC Jack
Internal I/O Connector	3 x USB header 1 x mPCIe 1 x SIM card slot 2 x Speaker header(4ohm/ 0.5W)
Display	
Multiple Display	Dual Lite(LVDS+HDMI) Quad(VGA+HDMI/ LVDS+HDMI/ VGA+LVDS)
Interface	1x Dual Channel 24-bit LVDS / 1x VGA
Audio	
Chipset	Wolfson WM8962
Audio Interface	
Ethernet	
Chipset	LAN1: From i.MX6 MAC, PHY is Micrel KSZ9031RX/ LAN2: Intel 82574L by PCIe Interface (Optional)
Ethernet Interface	
Mechanical & Environmental	
Power Requirement	12~24V DC Input
Power Type	2.5mm DC Jack
Operating Temp	0°C~40°C
Storage Temp	-10°C~60°C
Operating Humidity	0~90% Relative Humidity, Non-condensing
Weight	1.48 Kgs
Dimension (L x W x H)	231.7mm x 149.5mm x 42mm
Certifications	
Certification Information	CE Class A/ FCC Class A
Software Support	
OS Information	Android 4.4.2/ Ubuntu 12.04/ Yocto 1.5.1
Panel	
LCD Size	8" (16:9)
Display Type	WSVGA
Resolution	1024x600
Pixel pitch	262K color by 6 bit RGB signal
Luminance	500
Contrast ratio	700



Viewing angle	75(H) x 65(V)
Response time	8 ms
Backlight	LED
Touch Type	5-wire RES/ PCAP
Touch Light Transmission	RES 75%/ PCAP 90%
Touch Controller	EET/ PenMount



RITY10R1

10" Android POS

- > Freescale i.MX6 Cortex-A9 Dual lite/Quad 1GHz CPU
- > Fanless Design
- > 4GB eMMC, up to 8GB eMMC
- > 1GB RAM (Dual Lite), up to 2GB RAM (Quad)
- > 5-wire RES Touch / PCAP Touch
- > 2x COM, 2x USB
- > Front IP-65 & Back IP-41
- > Support Cash Drawer (12V/24V)
- > Optional Device: MSR

+ Spec

System	
Processor	Freescale i.MX6 Cortex-A9 Dual lite/ Quad 1GHz CPU
System Memory	1GB RAM (Dual Lite), up to 2GB RAM (Quad)
Storage	
Storage	4GB eMMC, up to 8GB eMMC
I/O	
External I/O Connector	2 x USB 2.0 1 x Micro USB OTG 2 x RS232 1 x Gb Ethernet 1 x Micro SD slot 1 x HDMI 1 x RJ11 1 x DC Jack
Internal I/O Connector	3 x USB header 1 x mPCIe 1 x SIM card slot 2 x Speaker header(4ohm/ 0.5W)
Display	
Multiple Display Interface	Dual Lite(LVDS+HDMI), Quad(VGA+HDMI/ LVDS+HDMI/ VGA+LVDS)
Interface	1x Dual Channel 24-bit LVDS/ 1x VGA
Audio	
Chipset	Wolfson WM8962
Audio Interface	
Ethernet	
Chipset	LAN1: From i.MX6 MAC, PHY is Micrel KSZ9031RNX/ LAN2: Intel 82574L by PCIe Interface (Optional)
Ethernet Interface	
Mechanical & Environmental	
Power Requirement	12~24V DC Input
Power Type	2.5mm DC Jack
Operating Temp	0°C~40°C
Storage Temp	-10°C~60°C
Operating Humidity	0~90% Relative Humidity, Non-condensing
Weight	1.8 Kgs
Dimension (L x W x H)	260mm x 178mm x 42mm
Certifications	
Certification Information	CE Class A/ FCC Class A
Software Support	
OS Information	Android 4.4.2/ Ubuntu 12.04/ Yocto 1.5.1
Panel	
LCD Size	10.1" (16:9)
Display Type	WXGA
Resolution	1366x768
Pixel pitch	262K color by 6 bit RGB signal
Luminance	200
Contrast ratio	1300
Viewing angle	85(H) x 85(V)
Response time	8 ms
Backlight	LED
Touch Type	5-wire RES/ PCAP



Touch Light Transmission	RES 75% / PCAP 90%
Touch Controller	EETV PenMount



RITY12R

12" Android POS

- > Freescale i.MX6 Cortex-A9 Dual lite/Quad 1GHz CPU
- > Fanless Design
- > 4GB eMMC, up to 8GB eMMC
- > 1GB RAM (Dual Lite), up to 2GB RAM (Quad)
- > 5-wire RES Touch/ PCAP Touch
- > 2x COM, 2x USB
- > Front IP-65 & Back IP-41
- > Support Cash Drawer (12V/24V)
- > Optional Device: MSR, VFD, Stand

Spec

System	
Processor	Freescale i.MX6 Cortex-A9 Dual lite/ Quad 1GHz CPU
System Memory	1GB RAM (Dual Lite), up to 2GB RAM (Quad)
Storage	
Storage	4GB eMMC, up to 8GB eMMC
I/O	
External I/O Connector	2 x USB2.0 1 x Micro USB OTG 2 x RS232 1 x Gb Ethernet 1 x Micro SD slot 1 x HDMI 1 x RJ11 1 x DC Jack
Internal I/O Connector	3 x USB header 1 x mPCIe 1 x SIM card slot 2 x Speaker header(4ohm/ 0.5W)
Display	
Multiple Display	Dual Lite(LVDS+HDMI), Quad(VGA+HDMI/ LVDS+HDMI/ VGA+LVDS)
Interface	1 x Dual Channel 24-bit LVDS 1 x VGA
Audio	
Chipset	Wolfson WM8962
Audio Interface	
Ethernet	
Chipset	LAN1: From i.MX6 MAC, PHY is Micrel KSZ9031RNX/ LAN2: Intel 82574L by PCIe Interface (Optional)
Ethernet Interface	
Mechanical & Environmental	
Power Requirement	12~24V DC Input
Power Type	2.5mm DC Jack
Operating Temp	0°C~40°C
Storage Temp	-10°C~60°C
Operating Humidity	0~90% Relative Humidity, Non-condensing
Weight	2.35 Kgs
Dimension (L x W x H)	322mm x 250mm x 47mm
Certifications	
Certification Information	CE Class A/ FCC Class A
Software Support	
OS Information	Android 4.4.2/ Ubuntu 12.04/ Yocto 1.5.1
Panel	
LCD Size	12.1" (4:3)
Display Type	XGA
Resolution	1024x768
Pixel pitch	16.2M
Luminance	600
Contrast ratio	700
Viewing angle	80(H) x 70(V)
Response time	8 ms
Backlight	LED



Touch Type	5-wire RES/ PCAP
Touch Light Transmission	RES 75% / PCAP 90%
Touch Controller	EETV/ PenMount



RITY15R

15" Android POS

- > Freescale i.MX6 Cortex-A9 Dual lite/Quad 1GHz CPU
- > Fanless Design
- > 4GB eMMC, up to 8GB eMMC
- > 1GB RAM (Dual Lite), up to 2GB RAM (Quad)
- > 5-wire Res Touch / PCAP Touch
- > 2x COM, 2x USB
- > Front IP-65 & Back IP-41
- > Support Cash Drawer (12V/24V)
- > Optional Device: MSR, VFD, Stand

Spec

System	
Processor	Freescale i.MX6 Cortex-A9 Dual lite / Quad 1GHz CPU
System Memory	1GB RAM (Dual Lite), up to 2GB RAM (Quad)
Storage	
Storage	4GB eMMC, up to 8GB eMMC
I/O	
External I/O Connector	2 x USB2.0 1 x Micro USB OTG 2 x RS232 1 x Gb Ethernet 1 x Micro SD slot 1 x HDMI 1 x RJ11 1 x DC Jack
Internal I/O Connector	3 x USB header 1 x mPCIe 1 x SIM card slot 2 x Speaker header(4ohm/ 0.5W)
Display	
Multiple Display	Dual Lite(LVDS+HDMI), Quad(VGA+HDMI/ LVDS+HDMI/ VGA+LVDS)
Interface	1 x Dual Channel 24-bit LVDS 1 x VGA
Audio	
Chipset	Wolfson WM8962
Ethernet	
Chipset	LAN1: From i.MX6 MAC, PHY is Micrel KSZ9031RNX LAN2: Intel 82574L by PCIe Interface (Optional)
Mechanical & Environmental	
Power Requirement	12~24V DC Input
Power Type	2.5mm DC Jack
Operating Temp	0°C~40°C
Storage Temp	-10°C~60°C
Operating Humidity	0~90% Relative Humidity, Non-condensing
Weight	3.39 Kgs
Dimension (L x W x H)	362.1mm x 290.08mm x 51mm
Certifications	
Certification Information	CE Class A / FCC Class A
Software Support	
OS Information	Android 4.4.2 / Ubuntu 12.04 / Yocto 1.5.1
Panel	
LCD Size	15" (4:3)
Display Type	XGA
Resolution	1024x768
Pixel pitch	16.2M
Luminance	400
Contrast ratio	700
Viewing angle	80(H) x 70(V)
Response time	8 ms
Backlight	LED
Touch Type	5-wire RES / PCAP



Touch Light Transmission	RES 75% / PCAP 90%
Touch Controller	EETI / PenMount



8

Mini POS / Tablet / Open Frame Tablet

CH8-Mini POS/Tablet/Open Frame Tablet +

RiPac-10P1	Intel® Atom™ Z3735F 10" All-In-One Mini POS Terminal
RiTab-10T1	10.1" Semi-Rugged Tablet with Intel® Atom™ Z3735F Processor
OFT-07W01	7" Open Frame Tablet
OFT-10W01	10.1" Open Frame Tablet
OFT-15W01	15.6" Open Frame Tablet
OFT-21W01	21.5" Open Frame Tablet



RiPac-10P1

Intel Atom Z3735F 10" All-In-One Mini POS Terminal

- > Intel Atom Z3735F 1.33GHz Processor
- > 10.1" Front Panel with 10 Point Projected Capacitive Touch
- > 5" Adjustable Customer LCD Display
- > Integrated 58/80mm Thermal Printer (Optional)
- > Integrated NFC Compliant with RFID/Felica
- > 4 Full Speed USB 2.0, RJ11 for Cash Drawer, 2 Powered COM in DB9
- > Lockable DC Jack

+ Spec

System	
Processor	Intel Atom Z3735F 1.33GHz Processor
System Memory	2GB DDR3L SDRAM
Storage	
Solid State Drive	32G (Default)/ 64G (Optional) eMMC
I/O	
USB	4 x USB 2.0
Serial	2 x RS232 in DB9, Powered with 5/12V
Cash Drawer	1 x RJ11
Ethernet	
Lan Port	1 x RJ45
Mechanical & Environmental	
Power Type	19.5V/6.15A 120W Lockable Adapter
Operating Temp	5°C ~ 40°C
Storage Temp	-10°C~60°C
Operating Humidity	0~95% Non-Condensing
Weight	3KG±10%
Dimension (L x W x H)	(L)299 x (W)316.2 x (H)148.9
System Fan	fanless
Color	Black & Gray
Certifications	
Certification Information	CE/FCC
Software Support	
OS Information	Windows 10, Linux, Android
Power Requirement	
Power Connector	Lockable DC Jack
Panel	
LCD Size	10.1" LCD, 5" LCD (customer side)
Resolution	1280 x 800 (10.1"), 1280 x 720 (5")
Touch Type	10 Point Projected Capacitive Touch
Data Collection	
NFC	ISO/IEC 14443 A/B, 15693/18092
Wireless Communication	
WLAN	Built-In IEEE 802.11 b/g/n
Bluetooth	Built-In Bluetooth 4.0 + Class 1
Thermal Printer	
Printing Method	Thermal Dot Line Printing
Total Dots Per Line	576 Dots
Resolution	(W)8 Dots/mm, (H)8 Dots/mm
Max. Print Speed	200mm/s
Max. Print Width	72mm
Max. Paper Width	80mm
Type of Paper Cutting	Full Cut & Partial Cut



RiTab-10T1

10.1" Semi-Rugged Tablet with Intel ATOM Z3735F

- > Semi-rugged design for warehousing/mPOS applications
- > MIL-STD-810G & IP54 certified, 4-foot drop resistance
- > 10.1" TFT color LCD 1280x800 HD
- > 10 point projected capacitive multi-touch panel
- > High mobility with multiple connectivity including WLAN, Bluetooth and WWAN
- > Optional built in 2D barcode scanner
- > Hot-swappable battery with optimized battery life up to 8 hours
- > G sensor, light sensor

Spec

System	
Processor	Intel® ATOM Z3735F 1.33GHz processor
System Memory	Onboard DDR3L 2GB
Storage	
Storage	Onboard 32GB eMMC, Optional 64GB
I/O	
USB	1 x USB 2.0 Type A
Other	1 x Audio Jack 1 x Micro SD 1 x DC Jack
SIM	1*Micro SIM Slot
HDMI	1 x Micro HDMI Output
Mechanical & Environmental	
Operating Temp	0°C~40°C (32°F~104°F)
Storage Temp	-10°C~60°C (14°F~140°F)
Operating Humidity	0%~90% Relative Humidity, Non-Condensing
Weight	1Kg
Construction	Rubber + Plastic
Vibration Test	MIL-STD-810G Method 514.6 Procedure 1
Shock Test	MIL-STD-810G Method 516.6 Procedure 1
Dimensions	281.9mm x 201mm x 20.8mm
Drop	4-Feet Drop on Concrete Floor, MIL-STD-810G 516.5 Procedure VI
IP Rating	IP54(Without MSR & SCR)
Certifications	
Certification Information	CE, FCC Class B, VCCI
Software Support	
OS Information	Win 10 / Android 4.4
Power Requirement	
Power Connector	DC Jack
Power Requirement	+19V
Adapter	Input: 100~240Vac/50~60 Hz Output: 40W Adaptor (19V@2.1A Adaptor)
Battery	Hot-Swappable 27.75W Li-Polymer Battery (3S1P) Internal 3.7W Li-Polymer Battery (2S1P)
Battery Operating Time	8 Hours
Panel	
LCD Size	10.1"
Display Type	WXGA
Resolution	1280x800
Luminance	350 cd/m ²
Touch Type	10 Points Projective Capacitive
In-Box Accessory	
Accessory	+19V 40W Power Adaptor
System Control	
Control Buttons	1 x Power Button 1 x G Sensor Lock Button 2 x Barcode Scanner Trigger
LED Indicator	1 x Power/Battery
Data Collection	
Camera	5MP Rear Camera With Auto Focus



NFC	ISO/IEC 14443 A/B, 15693/18092
Barcode Scanner	Full: 2D Barcode Scanner(Support 1D, PDF417 and 2D Bar Codes) Basic: N/A
Smart Card Reader	Full: Half-Slot, Reads ISO 7816-1, 2, 3 & 4, T=0 & T=1; 5V Smart Card Basic: N/A
MSR	Full: 3 Track Reader, Triple DES and AES Encryption, DUKPT Key Management Basic: N/A
Wireless Communication	
WLAN	802.11 b/g/n
Bluetooth	Bluetooth 4.0 Dual Mode
WWAN	Optional 3G(WCDMA/HSDPA/HSUPA/HSPA+)



OFT-07W01

7" open frame tablet

- > Intel® Atom™ Processor Z3735F
- > 2GB RAM
- > 8GB or 32GB eMMC
- > PCAP Touch
- > 10/100 Ethernet (PXE Boot)
- > Touch board interface (Power/ Brightness/ Volume/ LED)
- > 16Bit programmable GPIO
- > RS232(TX/RX) or RS485
- > Typical DC 12V Input, Optional 19V & 24V support

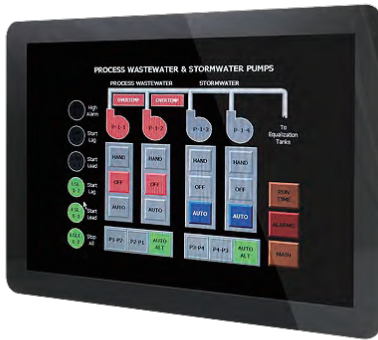
+ Spec

System	
Processor	Intel® Atom™ Processor Z3735F 1.33GHz Quad Core CPU
System Memory	2GB DDR3L RAM
Other	Optional 802.11 b/g/n/ WiFi
Storage	
Storage	8GB or 32GB eMMC
I/O	
External I/O Connector	2 x USB2.0 1 x micro USB Client(Android only) 1 x 10/100 Ethernet 1 x HDMI 1 x Head phone jack 1 x Micro SD slot 1 x DC jack
Internal I/O Connector	1 x RS232(TX/RX) or RS485 1 x 16 bit GPIO interface 2 x USB interface 2 x speaker interface (1.2W stereo) 1 x A-MIC interface 1 x Touch Button connector 1 x DC input 4pin header 1 x I2C interface(optional)
Display	
Multiple Display	Windows/ Linux support extended mode; Android support clone mode only
Mechanical & Environmental	
Power Requirement	12V DC input, Optional 19V or 24V DC input
Power Type	DC Jack,DC input 4pin header
Operating Temp	0°C ~ 40°C
Storage Temp	-10°C ~ 60°C
Operating Humidity	0% ~ 90% Relative Humidity, Non-condensing
Software Support	
OS Information	Windows 8.1/ Windows 10/ Android 4.4/ Android 5.1/ Ubuntu 14.04
Panel	
LCD Size	7"
Display Type	LCD
Resolution	1280x800
Luminance	300
Touch Type	PCAP

+ Ordering

OFT-07W01-8GB

OFT-07W01-32GB



OFT-10W01 10.1" Open Frame Tablet

- > Intel Atom Processor Z3735F
- > 2GB RAM
- > 8GB or 32GB eMMC
- > PCAP Touch
- > 10/100 Ethernet (PXE Boot)
- > Touch board interface (Power/ Brightness/ Volume/ LED)
- > 16Bit programmable GPIO
- > RS232(TX/RX) or RS485
- > Typical DC 19V Input, Optional 12V & 24V support
- > Optional Power Over Ethernet 802.3AT (10" only)

+ Spec

System	
Processor	Intel Atom Processor Z3735F 1.33GHz Quad Core CPU
System Memory	2GB DDR3L RAM
Other	Optional 802.11 b/g/n WiFi
Storage	
Storage	8GB or 32GB eMMC
I/O	
External I/O Connector	2 x USB 2.0 1 x micro USB Client(Android only) 1 x 10/100 Ethernet 1 x HDMI 1 x Head phone jack 1 x Micro SD slot 1 x DC jack
Internal I/O Connector	1 x RS232(TX/RX) or RS485 1 x 16 bit GPIO interface 1 x USB interface 1 x eDP & Dual channel 24bit LVDS 1 x backlight control & power 2 x speaker interface (1.2W stereo) 1 x A-MIC interface 1 x Touch Button connector 1 x DC input 4pin header 1 x I2C interface(optional)
Display	
Multiple Display	Windows/ Linux support extended mode; Android support clone mode only
Mechanical & Environmental	
Power Requirement	19V DC input, Optional 12V or 24V
Power Type	DC Jack, DC input 4pin header, optional Power Over Ethernet 802.3AT
Operating Temp	0°C ~ 40°C
Storage Temp	-10°C ~ 60°C0
Operating Humidity	0% ~ 90% Relative Humidity, Non-condensing
Software Support	
OS Information	Windows 8.1/ Windows 10/ Android 4.4/ Android 5.1/ Ubuntu 14.04
Panel	
LCD Size	10.1"
Resolution	1280x800
Luminance	350
Viewing angle	170° (H/V)
Touch Type	PCAP

+ Ordering

OFT-10W01-8GB eMMC

OFT-10W01-32GB eMMC

OFT-10W01-8GB eMMC w/ POE

OFT-10W01-32GB eMMC w/ POE



OFT-15W01

15.6" Open Frame Tablet

- > Intel Atom Processor Z3735F
- > 2GB RAM
- > 8GB or 32GB eMMC
- > PCAP Touch
- > 10/100 Ethernet (PXE Boot)
- > Touch board interface (Power/ Brightness/ Volume/ LED)
- > 16Bit programmable GPIO
- > RS232(TX/RX) or RS485
- > DC 19V Input, Optional 12V & 24V support

+ Spec

System	
Processor	Intel Atom Processor Z3735F 1.33GHz Quad Core CPU
System Memory	2GB DDR3L RAM
Other	Optional 802.11 b/g/n WiFi
Storage	
Storage	8GB or 32GB eMMC
I/O	
External I/O Connector	2 x USB 2.0 1 x micro USB Client(Android only) 1 x 10/100 Ethernet 1 x HDMI 1 x Head phone jack 1 x Micro SD slot 1 x DC jack
Internal I/O Connector	1 x RS232(TX/RX) or RS485 1 x 16 bit GPIO interface 1 x USB interface 1 x eDP & Dual channel 24bit LVDS 1 x backlight control & power 2 x speaker interface (1.2W stereo) 1 x A-MIC interface 1 x Touch Button connector 1 x DC input 4pin header 1 x I2C interface(optional)
Display	
Multiple Display	Windows/ Linux support extended mode; Android support clone mode only
Mechanical & Environmental	
Power Requirement	19V DC input, Optional 12V or 24V
Power Type	DC Jack, DC input 4pin header
Operating Temp	0°C ~ 40°C
Storage Temp	-10°C ~ 60°C
Operating Humidity	0% ~ 90% Relative Humidity, Non-condensing
Software Support	
OS Information	Windows 8.1/ Windows 10/ Android 4.4/ Android 5.1/ Ubuntu 14.04
Panel	
LCD Size	15.6"
Resolution	1920x1080
Luminance	220
Viewing angle	45°(H+)/ 45°(H-)/ 20°(V+)/ 45°(V-)
Touch Type	PCAP

+ Ordering

OFT-15W01-8GB eMMC

OFT-15W01-32GB eMMC



OFT-21W01

21.5" Open Frame Tablet

- > Intel Atom Processor Z3735F
- > 2GB RAM
- > 8GB or 32GB eMMC
- > PCAP Touch
- > 10/100 Ethernet (PXE Boot)
- > Touch board interface (Power/ Brightness/ Volume/ LED)
- > 16Bit programmable GPIO
- > RS232(TX/RX) or RS485
- > Typical DC 19V Input, Optional 12V & 24V support

+ Spec

System	
Processor	Intel Atom Processor Z3735F 1.33GHz Quad Core CPU
System Memory	2GB DDR3L RAM
Other	Optional 802.11 b/g/n WiFi
Storage	
Storage	8GB or 32GB eMMC
I/O	
External I/O Connector	2x USB 2.0, 1x micro USB Client(Android only), 1x 10/100 Ethernet, 1x HDMI, 1x Head phone jack, 1x Micro SD slot, 1x DC jack
Internal I/O Connector	1x RS232(TX/RX) or RS485, 1x 16 bit GPIO interface, 1x USB interface, 1x eDP & Dual channel 24bit LVDS, 1x backlight control & power, 2x speaker interface (1.2W stereo), 1x A-MIC interface, 1x Touch Button connector, 1x DC input 4pin header, 1x I2C interface(optional)
Display	
Multiple Display	Windows/ Linux support extended mode; Android support clone mode only
Mechanical & Environmental	
Power Requirement	19V DC input, Optional 12V or 24V DC
Power Type	DC Jack, DC input 4pin header
Operating Temp	0°C ~ 40°C
Storage Temp	-10°C ~ 60°C
Operating Humidity	0% ~ 90% Relative Humidity, Non-condensing
Software Support	
OS Information	Windows 8.1/ Windows 10/ Android 4.4/ Android 5.1/ Ubuntu 14.04
Panel	
LCD Size	21.5"
Resolution	1920x1080
Luminance	250
Viewing angle	178°(H/V)
Touch Type	PCAP

+ Ordering

OFT-21W01-8GB eMMC

OFT-21W01-32GB eMMC



9

DoE Touch Monitor IPM Series

CH9-IPM Series +

IPM-15W0	15.6" Full Flat Stainless steel Full IP66 PCAP Touch DOE Monitor
IPM-1201	12.1" Fanless IP Monitor
IPM-1202	12.1" Fanless IP Monitor
IPM-1001	10.4" Fanless IP Monitor
IPM-1002	10.4" Fanless IP Monitor



IPM-15W0

15.6" Full Flat Stainless steel Full IP66 PCAP Touch DOE Monitor

- > 15.6" WXGA Full Flat front Front Panel With PCAP touch
- > Display over Ethernet power by Aspeed AST1510
- > Stainless steel chassis with Full IP66 rating
- > Waterproof RJ45(DOE)connector
- > Waterproof DV in connector (optional)
- > Waterproof USB port connector (optional)
- > Waterproof HDMI out connector (optional)

+ Spec

System	
Processor	Aspeed AST1510 SoC
System Memory	on board 1GB DDR2 memory
I/O	
USB	2 x waterproof USB 2.0 connector (optional)
HDMI	1 x waterproof HDMI Out (optional)
Audio	
Speaker Output	2 x 2W
Ethernet	
Chipset	1 x Realtek 8211
Ethernet Interface	10/100/1000 Base- TX GbE compatible
Lan Port	1 x Waterproof RJ-45 connector support IEEE 802.at
Mechanical & Environmental	
Operating Temp	0°C ~ 50°C (32°F~122°F)
Storage Temp	-20°C ~ 60°C (-4°F~140°F)
Operating Humidity	10% to 95% @ 40°C, Non-condensing
Weight	6 kg
Mounting Kit	VESA 100 x 100
Vibration Test	1.5Grms, IEC 60068-2-64, Random, 5 ~ 500Hz, 30min/axis
Shock Test	50Grms, IEC 60068-2-27, Half Sine, 11ms
System Fan	Fanless
Construction - Front	Silver Stainless steel
Construction - Rear	Silver Stainless steel
Dimensions	209 x 460 x 43.1 mm
IP Rating	Full IP65
Certifications	
Certification Information	CE, FCC Class B
Power Requirement	
Power Connector	Waterproof DC in connector (optional)
Power Requirement	+12~+26V
Panel	
LCD Size	15.6"
Display Type	WXGA
Resolution	1366x768
Pixel pitch	0.252mm (H) x 0.252mm (V)
Luminance	300 cd/m2
Contrast ratio	500
Viewing angle	80 (U), 80 (D), 85 (L), 85 (R)
Response time	8ms
Backlight	LED
Touch Type	Projective Capacitive
Touch Light Transmission	88%
Touch Controller	USB touch (EETI)

+ Ordering

IPM-15W0-151-B1R
15.6" Full Flat Stainless steel Full IP66 PCAP Touch DOE Monitor



IPM-1201 12.1" Fanless IP Monitor

- > Display over Ethernet
- > Power over Ethernet
- > 5-wire Resistive Touch Screen
- > HDMI Input / HDMI Output / USB Ports / Headphone Jack
- > 1 Membrane Function Keys
- > IP65 Compliant Front Panel, IP41 Rear Box
- > System Fan-Less Design

+ Spec

System	
Processor	Aspeed AST1510 SoC
System Memory	on board 1GB DDR2 memory
I/O	
USB	2 x USB 2.0
Other	1 x HDMI Input 1 x HDMI Output 1 x Headphone Jack
Display	
Resolution	HDMI Out:1920 x 1200 @ 60Hz
Audio	
Audio Interface	Speaker Out
Speaker Output	2 x 2W
Ethernet	
Chipset	1 x Realtek 8211
Ethernet Interface	10/100/1000 Base-Tx GbE compatible
Lan Port	1 x RJ-45 support IEEE 802.at
Mechanical & Environmental	
Power Requirement	+12V ~ +26V
Operating Temp	0°C ~ 50°C (32°F ~ 122°F)
Storage Temp	-30°C ~ 70°C (-22°F ~ 158°F)
Operating Humidity	5~90% Relative Humidity, Non-condensing
Weight	2.21 kg
Mounting Kit	VESA 75 x 75, 100 x 100 / Din rail (Optional)
Dimension (L x W x H)	284 x 223 x 40 mm
Vibration Test	5 Grms, IEC 60068-2-64, Random, 5 ~ 500Hz, 30min/axis
Shock Test	20 Grms, IEC 60068-2-27, Half Sine, 11ms
System Fan	Fanless
Construction - Front	Silver Aluminum
Construction - Rear	Black Metal
IP Rating	IP65 Compliant Front Panel,IP41 Rear Box
Certifications	
Certification Information	CE FCC Class A
Power Requirement	
Power Connector	DC Jack (lockable)
Adapter	Input: 100 ~ 240Vac/ 50 ~ 60Hz Output: 60W Adapter (12V @ 5A)
Panel	
LCD Size	12.1"
Display Type	XGA
Resolution	1024x768
Pixel pitch	0.240 mm (H) x 0.240 mm (V)
Luminance	600 cd/m2
Contrast ratio	700
Viewing angle	80(U), 80(D), 70(L), 70(R)
Response time	16 ms
Backlight	LED
Touch Type	5-wire Resisitive
Touch Light Transmission	80 %



Touch Controller	USB touch (PenMount)
Specification	
Operating temperature	0~50°C (32~122°F)

+ Ordering

IPM-1201-R-A1R
12.1" / DoE / PoE / Resistive Touch Screen / HDMI Input / HDMI Output / 12V Adapter



IPM-1202

12.1" Fanless IP Monitor

- > Display over Ethernet
- > Power over Ethernet
- > 5-wire Resistive Touch Screen
- > HDMI Input / HDMI Output / USB Ports / Headphone Jack
- > 1 Membrane Function Keys
- > Full System IP65
- > System Fan-Less Design

Spec

System	
Processor	Aspeed AST1510 SoC
System Memory	on board 1GB DDR2 memory
I/O	
USB	2 x Waterproof USB 2.0 connector
Audio	
Chipset	Anpec Codec
Audio Interface	Speaker Output
Speaker Output	2 x 2W
Ethernet	
Chipset	Realtek 8211
Ethernet Interface	10/100/1000 Base-Tx GbE compatible
Lan Port	1 x RJ-45
Mechanical & Environmental	
Power Requirement	+12V ~ +26V
Operating Temp	0°C ~ 50°C (32°F ~ 122°F)
Storage Temp	-40°C ~ 75°C (-40°F ~ 167°F)
Operating Humidity	5~90% Relative Humidity, Non-condensing
Weight	2.4 kg
Dimension (L x W x H)	284 x 223 x 56 mm
Vibration Test	5 Grms, IEC 60068-2-64, Random, 5 ~ 500Hz, 30min/axis
Shock Test	20 Grms, IEC 60068-2-27, Half Sine, 11ms
System Fan	Fanless
Construction - Front	Silver Aluminum
Construction - Rear	Black Metal
IP Rating	Full IP65
Certifications	
Certification Information	CE FCC Class A
Power Requirement	
Power Connector	DC Jack (lockable)
Adapter	Input: 100 ~ 240Vac/ 50 ~ 60Hz Output: 60W Adapter (12V @ 5A)
Panel	
LCD Size	12.1"
Display Type	XGA
Resolution	1024x768
Pixel pitch	0.240 mm (H) x 0.240 mm (V)
Luminance	600 cd/m2
Contrast ratio	700
Viewing angle	80(U), 80(D), 70(L), 70(R)
Response time	16 ms
Backlight	LED
Touch Type	5-wire Resistive
Touch Light Transmission	80 %
Touch Controller	Onboard USB touch (PenMount)
Specification	
Operating temperature	0~50°C (32~122°F)

Ordering

IPM-1202-R-A1R
12.1" / DoE / PoE / Resistive Touch Screen / HDMI Input / HDMI Output / 12V Adapter



IPM-1001

10.4" Fanless IP Monitor

- > Display over Ethernet
- > Power over Ethernet
- > 5-wire Resistive Touch Screen
- > HDMI Input / HDMI Output / USB Ports / Headphone Jack
- > 1 Membrane Function Keys
- > IP65 Compliant Front Panel, IP41 Rear Box
- > System Fan-Less Design

+ Spec

System	
Processor	Aspeed AST1510 SoC
System Memory	on board 1GB DDR2 memory
I/O	
USB	2 x USB 2.0
Other	1 x HDMI Input 1 x HDMI Output 1 x Headphone Jack
Display	
Resolution	HDMI Out:1920 x 1200 @ 60Hz
Audio	
Audio Interface	Speaker Out
Speaker Output	2 x 2W
Ethernet	
Chipset	1 x Realtek 8211
Ethernet Interface	10/100/1000 Base-Tx GbE compatible
Lan Port	1 x RJ-45 support IEEE 802.at
Mechanical & Environmental	
Power Requirement	+12V ~ +26V
Operating Temp	0°C ~ 50°C (32°F ~ 122°F)
Storage Temp	-30°C ~ 70°C (-22°F ~ 158°F)
Operating Humidity	5~90% Relative Humidity, Non-condensing
Weight	1.95 kg
Mounting Kit	VESA 75 x 75, 100 x 100 / Din rail (Optional)
Dimension (L x W x H)	265 x 201 x 40 mm
Vibration Test	5 Grms, IEC 60068-2-64, Random, 5 ~ 500Hz, 30min/axis
Shock Test	20 Grms, IEC 60068-2-27, Half Sine, 11ms
System Fan	Fanless
Construction - Front	Silver Aluminum
Construction - Rear	Black Metal
IP Rating	IP65 Compliant Front Panel,IP41 Rear Box
Certifications	
Certification Information	CE FCC Class A
Power Requirement	
Power Connector	DC Jack (lockable)
Power Requirement	+12V ~ +26V
Adapter	Input: 100 ~ 240Vac/ 50 ~ 60Hz Output: 60W Adapter (12V @ 5A)
Panel	
LCD Size	10.4"
Display Type	XGA
Resolution	1024x768
Pixel pitch	0.0685mm(H) x 0.2055mm (V)
Luminance	500 cd/m2
Contrast ratio	1000
Viewing angle	88 (U), 88 (D), 88 (L), 88 (R)
Response time	25ms
Backlight	LED
Touch Type	5-wire Resistive



Touch Light Transmission	80
Touch Controller	USB touch (PenMount)
Specification	
Operating temperature	0~50°C (32~122°F)

+ Ordering

IPM-1001-R-A1R
10.4" / DoE / PoE / Resistive Touch Screen / HDMI Input / HDMI Output / 12V Adapter



IPM-1002 10.4" Fanless IP Monitor

- > Display over Ethernet
- > Power over Ethernet
- > 5-wire Resistive Touch Screen
- > HDMI Input / HDMI Output / USB Ports / Headphone Jack
- > 1 Membrane Function Keys
- > Full System IP65
- > System Fan-Less Design

+ Spec

System	
Processor	Aspeed AST1510 SoC
System Memory	on board 1GB DDR2 memory
I/O	
USB	2 x Waterproof USB 2.0 connector
Audio	
Audio Interface	Speaker Out
Speaker Output	2 x 2W
Ethernet	
Chipset	Realtek 8211
Ethernet Interface	10/100/1000 Base-Tx GbE compatible
Lan Port	1 x RJ-45
Mechanical & Environmental	
Power Requirement	+12V ~ +26V
Operating Temp	0°C ~ 50°C (32°F ~ 122°F)
Storage Temp	-40°C ~ 75°C (-40°F ~ 167°F)
Operating Humidity	5~90% Relative Humidity, Non-condensing
Weight	2.13 kg
Dimension (L x W x H)	265 x 201 x 56 mm
Vibration Test	5 Gms, IEC 60068-2-64, Random, 5 ~ 500Hz, 30min/axis
Shock Test	20 Gms, IEC 60068-2-27, Half Sine, 11ms
System Fan	Fanless
Construction - Front	Silver Aluminum
Construction - Rear	Black Metal
IP Rating	Full IP65
Certifications	
Certification Information	CE FCC Class A
Power Requirement	
Power Connector	DC Jack (lockable)
Power Requirement	+12V ~ +26V
Adapter	Input: 100 ~ 240Vac/ 50 ~ 60Hz Output: 60W Adapter (12V @ 5A)
Panel	
LCD Size	10.4"
Display Type	XGA
Resolution	1024x768
Pixel pitch	0.0685mm(H) x 0.2055mm (V)
Luminance	500 cd/m2
Contrast ratio	1000
Viewing angle	88 (U), 88 (D), 88 (L), 88 (R)
Response time	25ms
Backlight	LED
Touch Type	5-wire Resistive
Touch Light Transmission	80
Touch Controller	Onboard USB touch (PenMount)
Specification	
Operating temperature	0~50°C (32~122°F)

+ Ordering

IPM-1002-RA1R

10.4"/ DoE / PoE / Resistive Touch Screen / HDMI Input / HDMI Output / 12V Adapter



10

RISC Touch Panel PC

CH10-RISC Touch Panel PC +

FPC-05R1	5.7" SVGA TFT RISC Multifunctional Panel PC
FPC-08R1	8" SVGA TFT RISC Multifunctional Panel PC
BFC-10R1	10" RISC Bezel Free Panel PC with FreeScale iMX51
RPC-10W1	10.1" WSVGA TFT RISC Multifunctional Panel PC



FPC-05R1

5.7" SVGA TFT RISC Multifunctional Panel PC

- > Freescale i.MX51 800 MHz
- > Onboard 512MB DDR2 SDRAM
- > Onboard 4GB eMMC
- > 2 USB, 1COM, 1 Debug Port
- > 10/100 LAN, SD Socket
- > Fanless & slim design
- > Single +12V

Spec

System	
Processor	Freescale i.MX51 Multimedia Processor
System Chipset	i.MX51
System Memory	1 X Onboard DDR2 512MB
I/O Chip	N/A
Watchdog Timer	time-out periods from 0.5 seconds up to 128 seconds
H/W Status Monitor	N/A
SBC	RSC-IMX51
Storage	
Storage	1 x On board 4GB eMMC
I/O	
USB	2 x USB 2.0 1 x Mini-USB Connector
Com Port	1 x RS232(Debug Port) 1 x RS-232/422/485
Other	2 x Speaker 1 x RJ-45 1 x On/Off Switch 1 x Reset button 1 x SD Socket Support SDHC (eSDHC-2)
Display	
Chipset	IMX51(Supports optional dual display)
Resolution	HDMI: Max. resolution 720P @ 60Hz LVDS: Max. resolution 640x480 @ 60Hz
Audio	
Chipset	SGTL5000
Audio Interface	Speaker Out
Speaker Output	2 x 2W
Ethernet	
Chipset	1 x SMSC LAN8710A
Ethernet Interface	10/100 Base-Tx Fast compatible
Lan Port	1 x RJ-45
Mechanical & Environmental	
Power Requirement	12V
Power Type	DC Input
Operating Temp	0°C ~ 40°C (32°F ~ 104°F)
Storage Temp	-20°C ~ 60°C (-4°F ~ 140°F)
Operating Humidity	0% ~ 90% Relative Humidity, Non-condensing
Weight	0.61 Kg
Dimension (L x W x H)	145.8*117*39.3 mm
Vibration Test	With eMMC : 2Grms, IEC 60068-2-6, Random, 5 ~ 500Hz, 30min/axis
Shock Test	With eMMC : 10Grms, IEC 60068-2-29, Half Sine, 11ms
System Fan	Fanless
Construction - Front	Black
Construction - Rear	Black
Certifications	
Certification Information	CE FCC Class A
Software Support	
OS Information	Android 2.3.4 Ubuntu 10.04 WIN CE 6.0
Power Requirement	
Power Connector	Lockable DC Jack
Power Requirement	12V
Adapter	"Input: 100 ~ 240Vac/ 50 ~ 60Hz Output: 60W Adapter (12V @ 5A Adapter) AC-DC Adapter"
Panel	
LCD Size	5.7"
Display Type	SVGA



Resolution	640x480
Pixel pitch	0.06mm (H) x 0.18mm (V)
Luminance	300 cd/m ²
Contrast ratio	400
Viewing angle	60 (U), 40 (D), 70 (L), 70 (R)
Response time	15 ms
Backlight	LED
Touch Type	4 Wires resistive
Touch Light Transmission	80 %
Touch Controller	MC13892

+ Ordering

FPC-05R1-M51-B1R
5.7" VGA 4-wire resistive RISC Panel PC with RSC-IMX51



FPC-08R1

8" SVGA TFT RISC Multifunctional Panel PC

- > Freescale i.MX51 800 MHz
- > Onboard 512MB DDR2 SDRAM
- > Onboard 4GB eMMC
- > 2 USB, 1COM, 1 Debug Port
- > 10/100 LAN, SD Socket
- > Fanless & slim design
- > Single +12V

Spec

System	
Processor	Freescale i.MX51 Multimedia Processor
System Chipset	i.MX51
System Memory	1 X Onboard DDR2 512MB
I/O Chip	N/A
Watchdog Timer	time-out periods from 0.5 seconds up to 128 seconds
H/W Status Monitor	N/A
SBC	RSC-IMX51
Storage	
Storage	1 x On board 4GB eMMC
I/O	
USB	2 x USB 2.0 1 x Mini-USB Connector
Com Port	1 x RS232(Debug Port) 1 x RS-232/422/485
Other	2 x Speaker 1 x RJ-45 1 x On/Off Switch 1 x Reset button 1 x SD Socket Support SDHC (eSDHC-2)
Display	
Chipset	IMX51 (Supports optional dual display)
Resolution	HDMI: Max. resolution 720P @ 60Hz LVDS: Max. resolution 800x600 @ 60Hz
Audio	
Chipset	SGTL5000
Audio Interface	Speaker Out
Speaker Output	2 x 2W
Ethernet	
Chipset	1 x SMSC LAN8710A
Ethernet Interface	10/100 Base-Tx Fast compatible
Lan Port	1 x RJ-45
Mechanical & Environmental	
Power Requirement	12V
Power Type	DC Input
Operating Temp	0°C ~ 40°C (32°F ~ 104°F)
Storage Temp	-20°C ~ 60°C (-4°F ~ 140°F)
Operating Humidity	0% ~ 90% Relative Humidity, Non-condensing
Weight	1.9 Kg
Dimension (L x W x H)	192*150*42.2 mm
Vibration Test	With eMMC : 2Grms, IEC 60068-2-6, Random, 5 ~ 500Hz, 30min/axis
Shock Test	With eMMC : 10Grms, IEC 60068-2-29, Half Sine, 11ms
System Fan	Fanless
Construction - Front	Black
Construction - Rear	Black
Certifications	
Certification Information	CE FCC Class A
Software Support	
OS Information	Android 2.3.4 Ubuntu 10.04 WIN CE 6.0
Power Requirement	
Power Connector	Lockable DC Jack
Power Requirement	12V
Adapter	"Input: 100 ~ 240Vac/ 50 ~ 60Hz Output: 60W Adapter (12V @ 5A Adapter) AC-DC Adapter"
Panel	
LCD Size	8"
Display Type	SVGA



Resolution	800x600
Pixel pitch	0.0675mm (H) x 0.2025mm (V)
Luminance	250 cd/m ²
Contrast ratio	200
Viewing angle	50 (U), 70 (D), 70 (L), 70 (R)
Response time	10 ms
Backlight	LED
Touch Type	4 Wires resistive
Touch Light Transmission	80 %
Touch Controller	MC13892

+ Ordering

FPC-08R1-M51-B1R
8" SVGA 4-wire resistive RISC Panel PC with RSC-IMX51



BFC-10R1

10" RISC Bezel Free Panel PC with FreeScale iMX51 with FreeScale Imx51

- > Freescale i.MX51 800 MHz
- > Onboard 512MB DDR2 SDRAM
- > Onboard 4GB eMMC
- > 2 USB, 2 COM
- > 10/100 LAN, SD Socket
- > Fanless & slim design
- > Single +12V
- > Power-on LED

+ Spec

System	
Processor	Freescale i.MX51 Multimedia Processor
System Chipset	i.MX51
System Memory	1 X Onboard DDR2 512MB
I/O Chip	N/A
Watchdog Timer	time-out periods from 0.5 seconds up to 128 seconds
H/W Status Monitor	N/A
SBC	RSC-IMX51
Storage	
Storage	1 x On board 4GB eMMC
I/O	
USB	2 x USB 2.0 1 x Mini-USB Connector
Com Port	1 x RS232(Debug Port) 1 x RS-232/422/485
Other	2 x Speaker 1 x RJ-45 1 x On/Off Switch 1 x Power-on LED 1 x SD Socket Support SDHC (eSDHC-2)
Display	
Chipset	IMX51 Supports optional dual display
Resolution	HDMI: Max. resolution 720P @ 60Hz LVDS: Max. resolution 1024x600 @ 60Hz
Audio	
Chipset	SGTL5000
Audio Interface	Speaker Out
Speaker Output	2 x 2W
Ethernet	
Chipset	1 x SMSC LAN8710A
Ethernet Interface	10/100 Base-Tx Fast compatible
Lan Port	1 x RJ-45
Mechanical & Environmental	
Power Requirement	12V
Power Type	DC Input
Operating Temp	0°C ~ 40°C (32°F ~ 104°F)
Storage Temp	-20°C ~ 60°C (-4°F ~ 140°F)
Operating Humidity	0% ~ 90% Relative Humidity, Non-condensing
Weight	1.53 Kgs
Dimension (L x W x H)	252.8*164*41.3 mm
Vibration Test	With eMMC : 2Grms, IEC 60068-2-6, Random, 5 ~ 500Hz, 30min/axis
Shock Test	With eMMC : 10Grms, IEC 60068-2-29, Half Sine, 11ms
System Fan	Fanless
Construction - Front	Silver Aluminum
Construction - Rear	Black
Certifications	
Certification Information	CE FCC Class A
Software Support	



OS Information	Android 2.3.4 Ubuntu 10.04 WIN CE 6.0
Power Requirement	
Power Connector	Lockable DC Jack
Power Requirement	12V
Adapter	With eMMC : 10Grms, IEC 60068-2-29, Half Sine, 11ms
Panel	
LCD Size	10.1"
Display Type	WSVGA
Resolution	1024x600
Pixel pitch	0.2715mm (H) x 0.2088mm (V)
Luminance	200 cd/m ²
Contrast ratio	300
Viewing angle	15 (U), 45 (D), 45 (L), 45 (R)
Response time	30 ms
Backlight	LED
Touch Type	Projective Capacitive
Touch Light Transmission	93 %
Touch Controller	USB touch (EET)

 **Ordering**

BFC-10R1-M51-A1R
10.1" RISC Bezel Free Panel PC/A1



RPC-10W1

10.1" WSVGA TFT RISC Multifunctional Panel PC

- > Freescale i.MX51 800 MHz
- > Onboard 512MB DDR2 SDRAM
- > Onboard 4GB eMMC
- > 2 USB, 1COM, 1 Debug Port
- > 10/100 LAN, SD Socket
- > Fanless & slim design
- > Single +12V
- > Power-on LED

+ Spec

System	
Processor	Freescale i.MX51 Multimedia Processor
System Chipset	i.MX51
System Memory	1 X Onboard DDR2 512MB
I/O Chip	N/A
Watchdog Timer	time-out periods from 0.5 seconds up to 128 seconds
H/W Status Monitor	N/A
SBC	RSC-IMX51
Storage	
Storage	1 x On board 4GB eMMC
I/O	
USB	2 x USB 2.0 1 x Mini-USB Connector
Com Port	1 x Debug Port 1 x RS-232/422/485
Other	2 x Speaker 1 x RJ-45 1 x On/Off Switch
Display	
Chipset	IMX51
Resolution	HDMI: Max. resolution 720P @ 60Hz LVDS: Max. resolution 1024x600 @ 60Hz
Audio	
Chipset	SGTL5000
Audio Interface	Speaker Out
Speaker Output	2 x 2W
Ethernet	
Chipset	1 x SMSC LAN8710A
Ethernet Interface	10/100 Base-Tx Fast compatible
Lan Port	1 x RJ-45
Mechanical & Environmental	
Power Requirement	12V
Power Type	DC Input
Operating Temp	0°C ~ 40°C (32°F ~ 104°F)
Storage Temp	-20°C ~ 60°C (-4°F ~ 140°F)
Operating Humidity	0% ~ 90% Relative Humidity, Non-condensing
Weight	1.53 Kg
Dimension (L x W x H)	252.8*164*41.3mm
Vibration Test	With eMMC : 2Grms, IEC 60068-2-6, Random, 5 ~ 500Hz, 30min/axis
Shock Test	With eMMC : 10Grms, IEC 60068-2-29, Half Sine, 11ms
System Fan	Fanless
Construction - Front	Black
Construction - Rear	Black
Certifications	
Certification Information	CE FCC Class A
Software Support	
OS Information	Android 2.3.4 Ubuntu 10.04 WIN CE 6.0
Power Requirement	
Power Connector	Lockable DC Jack
Power Requirement	12V
Adapter	"Input: 100 ~ 240Vac/ 50 ~ 60Hz Output: 60W Adapter (12V @ 5A Adapter) AC-DC Adapter"
Panel	
LCD Size	10"
Display Type	WSVGA



Resolution	1024x600
Pixel pitch	0.1905mm (H) x 0.189mm (V)
Luminance	200 cd/m ²
Contrast ratio	500
Viewing angle	45 (U), 45 (D), 20(L), 45 (R)
Response time	3 ms
Backlight	LED
Touch Type	4 Wires resistive
Touch Light Transmission	80 %
Touch Controller	MC13892

Ordering

RPC-10W1-M51-B1R
10.1" WSVGA RISC Panel PC with RSC-IMX51

RPC-10W1-M51P-B1R
10.1" WSVGA RISC Panel PC with RSC-IMX51 with POE



OPS Module

CH11-OPS Module +

SOPM-QM87

Intel® 4th Generation Core™ Open Pluggable Specification (OPS) Digital Signage Player with Intel® QM87 Express Chipset

SOPM-HM65

Intel® 2nd/3rd Generation Core™ Open Pluggable Specification (OPS) Digital Signage Player with Intel® Express HM65 Chipset



SOPM-QM87

Intel® 4th Generation Core™ Open Pluggable Specification (OPS) Digital Signage Player with Intel® QM87 Express Chipset

- > Onboard Intel® 4th Generation Core™ i7/i5/i3, Pentium® and Celeron® Processors (Max TDP 37W)
- > Intel® QM87 Express Chipset
- > 2 x 204-Pin DDR3L 1333/1600 MHz SO-DIMM supports up to 16 GB
- > 1 x Intel® I217LM PCI-Express Gigabit Ethernet
- > 1 x Half size Mini PCI-e socket Support mSATA SSD Switch Through BIOS
- > 1 x 2.5" Drive Bay (7mm)
- > 2 x USB 3.0 type A, 1 x DP, 1 x Power button, 1x HDD LED, 1 x Reset button, 1 x Line-out, 1 x Mic-in

+ Spec

System	
Processor	Onboard Intel® 4th Generation Core™ i7/i5/i3, Pentium® and Celeron® Processors (Max TDP 37W)
System Chipset	Intel® QM87 Express Chipset
System Memory	2 x 204-Pin DDR3L 1333/1600 MHz SO-DIMM supports up to 16 GB
Watchdog Timer	H/W Reset, 1sec. ~ 65535sec. and 1sec./step
H/W Status Monitor	Monitoring CPU & System Temperature and Voltage
Board	EPIC board with Intel® QM87 Express Chipset
Expansion	
Expansion	1 x Half Size Mini PCI-e Support mSATA (Switch Through BIOS)
Storage	
Storage	1 x 2.5" Drive Bay (7mm)
I/O	
USB	2 x USB 3.0
Other	1 x Reset 1 x Power button 1 x HDD LED 2 x SMA connector
Display	
Chipset	Intel® 4th Generation CPU integrated HDMI + DP
Interface	HDMI DP
Audio	
Chipset	Mic-In and Line-Out
Ethernet	
Chipset	1 x Intel® I217LM
Ethernet Interface	10/100/1000 Base-Tx GbE compatible
Mechanical & Environmental	
Operating Temp	(w/HDD), ambient w/ air flow 0°C ~ 40°C (32°F ~ 104°F)
Storage Temp	-20°C ~ 75°C (-4°F ~ 167°F)
Operating Humidity	0% ~ 90% Relative Humidity, Non-condensing
Construction	Metal
Dimension (L x W x H)	200 x 119 x 30mm
Power Requirement	
Power Connector	The 80-pin right angle blind mate plug connector (p/n: TX25-80P-LT-H1E)
Power Requirement	+12~19V (from monitor)
Power Mode	ATX

+ Ordering

SOPM-QM87-A1R
Intel® Core™ i5-4440 Processor (6M Cache, up to 3.30 GHz) Open Pluggable Specification (OPS) Digital Signage Player with Intel® QM87 Express Chipset



SOPM-HM65

Intel® 2nd/3rd Generation Core™ Open Pluggable Specification (OPS) Digital Signage Player with Intel® Express HM65 Chipset

- > Intel® rPGA988 Socket(Socket G2) 2nd/3rd Generation Core™ i7/i5/i3, Pentium® and Celeron® Processors (Max TDP 35W)
- > Intel® HM65 Express Chipset
- > 1 x 204-Pin DDR3L 1333/1600 MHz SO-DIMM supports up to 8 GB
- > 1x Realtek RTL8111E PCI-Express Gigabit Ethernet
- > 1 x Half size Mini PC-Ie socket
- > 1 x 2.5" Drive Bay (7mm)
- > 2 x USB 2.0 type A, 1 x Line-out, 1 x Mic-in

+ Spec

System	
Processor	Intel® rPGA988 Socket(Socket G2) 2nd/3rd Generation Core™ i7/i5/i3, Pentium® and Celeron® Processors (Max TDP 35W)
System Chipset	Intel® HM65 Express Chipset
System Memory	1 x 204-Pin DDR3L 1333/1600 MHz SO-DIMM supports up to 8 GB
Board	EPIC board with Intel® HM65 Express Chipset
Expansion	
Expansion	1 x Half Size Mini PC-Ie socket
Storage	
Storage	1 x 2.5" Drive Bay (7mm)
I/O	
USB	2 x USB 2.0
Other	1 x Reset 1 x Power button 1 x HDD LED 2 x SMA connector
Display	
Chipset	Intel® 2nd/3rd Generation CPU integrated HDMI + DP
Audio	
Audio Interface	Mic-In and Line-Out
Ethernet	
Chipset	1x Realtek RTL8111E PCI-Express Gigabit Ethernet
Ethernet Interface	10/100/1000 Base-Tx GbE compatible
Mechanical & Environmental	
Operating Temp	(w/HDD), ambient w/ air flow 0°C ~ 40°C (32°F ~ 104°F)
Storage Temp	-20°C ~ 75°C (-4°F ~ 167°F)
Operating Humidity	0% ~ 90% Relative Humidity, Non-condensing
Construction	Metal
Dimension (L x W x H)	200 x 119 x 30mm
Power Requirement	
Power Connector	The 80-pin right angle blind mate plug connector (p/n: TX25-80P-LT-H1E)
Power Requirement	+12~19V (from monitor)
Power Mode	ATX

+ Ordering

SOPM-HM65-A1R
Intel® 2nd/3rd Generation Core™ Open Pluggable Specification (OPS) Digital Signage Player with Intel® Express HM65 Chipset

Applied Computing Platform
Medical Terminals
POS and KIOSK
Automation Terminals
Rugged Industrial Panel PC
Media & Digital Signage Terminals
Infotainment Solution
RISC Platform

Touch
the FUTURE



(visit our website)



(get eCatalog)

Headquarters

Avalue Technology Inc.

7F, 228, Lian-cheng Road,
Zhonghe Dist., New Taipei City 235, Taiwan
Tel: +886-2-8226-2345
Fax: +886-2-8226-2777
E-mail: sales@avalue.com.tw
Web: www.avalue.com.tw

Avalue China

Avalue Technology Inc.

F3, Building 57, No.461 Hong Cao Road,
Shanghai, China
Tel: +86-21-5169-3609
Fax: +86-21-5445-3266
E-mail: sales.china@avalue.com.cn

Avalue Japan

Avalue Technology Inc.

3F Ishiyama-Bldg, 1-6-1 Taito,
Taito-ku, Tokyo 110-0016 Japan
Tel: +81-3-5807-2321
Fax: +81-3-5807-2322
E-mail: sales.japan@avalue.co.jp

Avalue USA

Avalue Technology Inc.

9 Timber Lane Marlboro, NJ 07746
Tel: +732-414-6500
Fax: +732-414-6501
E-mail: sales@avalue-usa.com

Avalue USA

BCM Advanced Research

11 Chrysler, Irvine, CA 92618 USA
Tel: +1-949-470-1888
Fax: +1-949-470-0971
E-mail: BCMSales@bcmcom.com
Web: www.bcmcom.com

Avalue Europe

Avalue Technology A/S

Moelledalen 22C, 3140 Aalsgaarde, Denmark
Tel: +45-7025-0310
Tel: +45-7027-2310
E-mail: sales.europe@avalue.com.tw



All specifications are subjects to change without notification.
All brand names and registered trademarks referred to in this catalog are the property of their respective companies.
Copyright © Avalue Technology Inc. 2010-2011